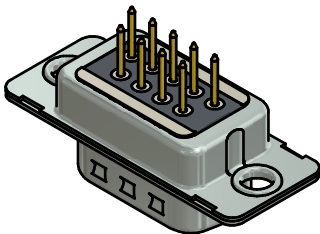
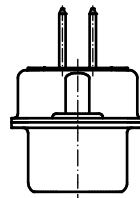
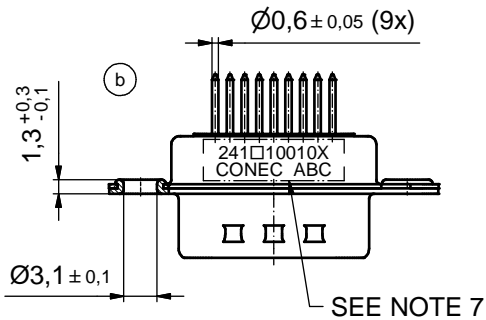
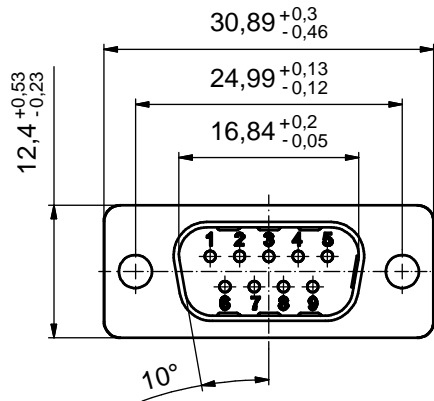
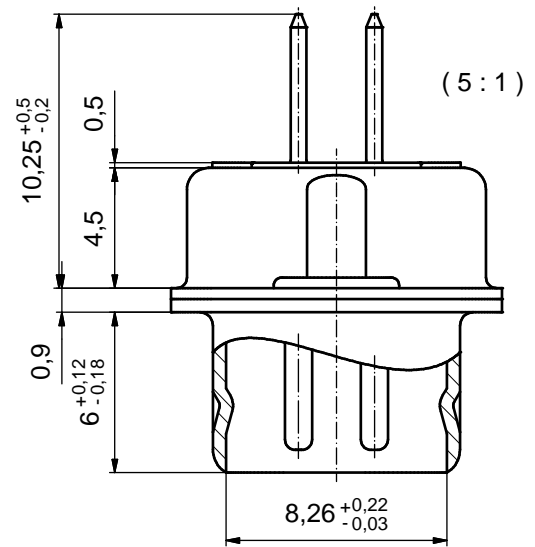


P.C.B. HOLE DRILLINGS
(P.C.B. TOP SIDE)



NOTES: (b)

- FOR WAVESOLDERING (SOLDER BATH TEMPERATURE 260°C FOR 5 SEC. AND SOLDER PREHEAT 100°C FOR 30SEC.)
- METAL SHELLS: STEEL; min. 315µm TIN over 40-80µm NICKEL
- INSULATOR: HIGH TEMPERATURE PLASTIC UL 94 V-0; BLACK
- CONTACTS: COPPER ALLOY; PLATING (SEE PART NO.):
 - PLEASE ADD A for GOLD FLASH over min. 50µm NICKEL (PREFERRED TYPE)
 - PLEASE ADD B for 20µm HARD GOLD over min. 50µm NICKEL
 - PLEASE ADD C for 30µm HARD GOLD over min. 50µm NICKEL
- CAPACITANCE: 370pF ±20%
- DIELECTRIC WITHSTANDING VOLTAGE: 424 VDC
- CONNECTOR IS PART MARKED: **241□10010X CONEC ABC** (see note 4)

Directive 2002/95/EC RoHS compliant

THIS DRAWING MAY NOT BE COPIED OR REPRODUCED IN ANY WAY, AND MAY NOT BE PASSED ON TO A THIRD PARTY WITHOUT WRITTEN PERMISSION. OWNERSHIP AND COPYRIGHT OF CONEC GmbH

DO NOT ALTER CAD DRAWING BY HAND

tolerance		dim. in mm	
date	name	date	name
drawn 07.05.2014	Heinrich	appd. 07.05.2014	Henneboel
norm		d-old	24K1A279/24K2A279
4 x b	A5200	07.05.2014	Heinrich
a	Original		
rev.	description	date	name

scale:	2:1 (5:1)	
material:	SEE NOTES	
title:	D-SUB C-FILTER MALE 9pos. SOLDER PIN STRAIGHT	
dwg no:		DIN-A3
	24K1A1524 (b)	sh: 1
part no:	(b) 241□10010X (see note 4)	

