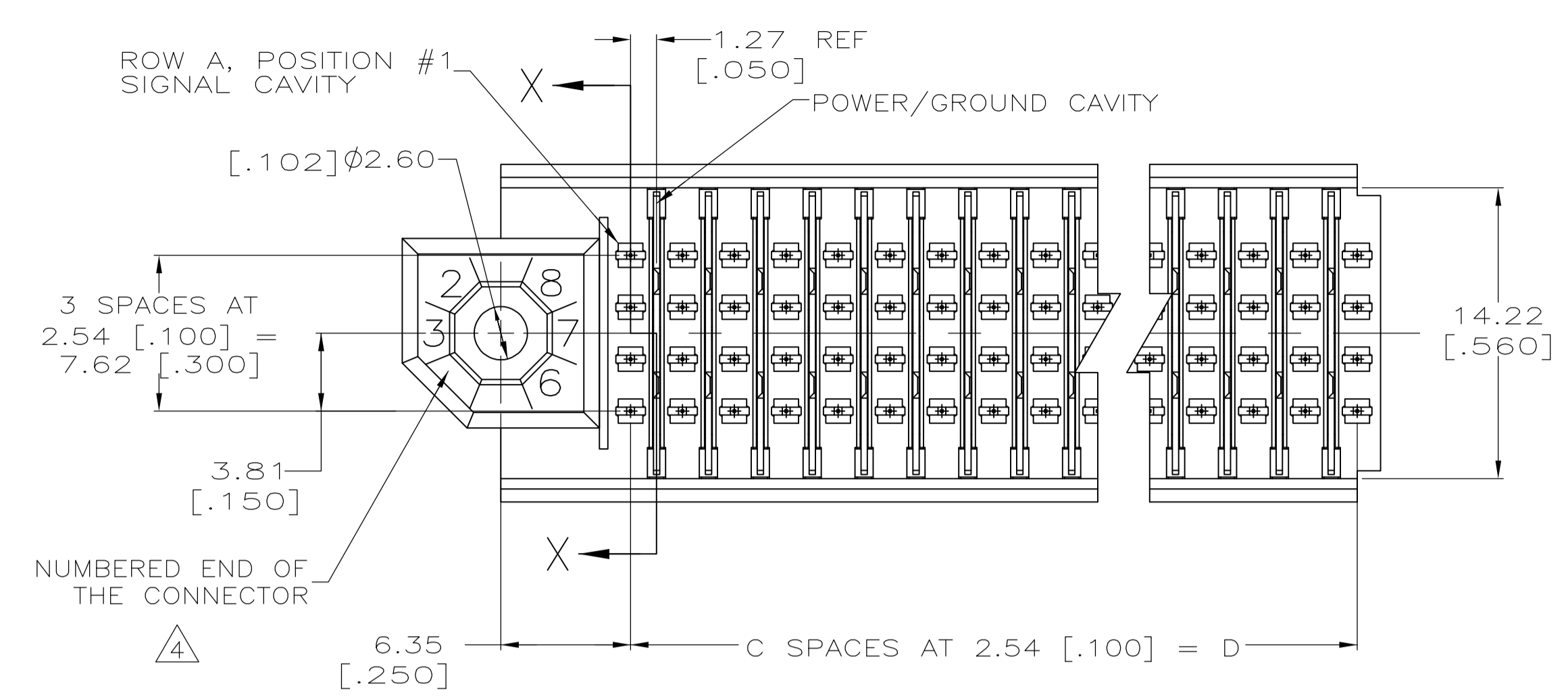
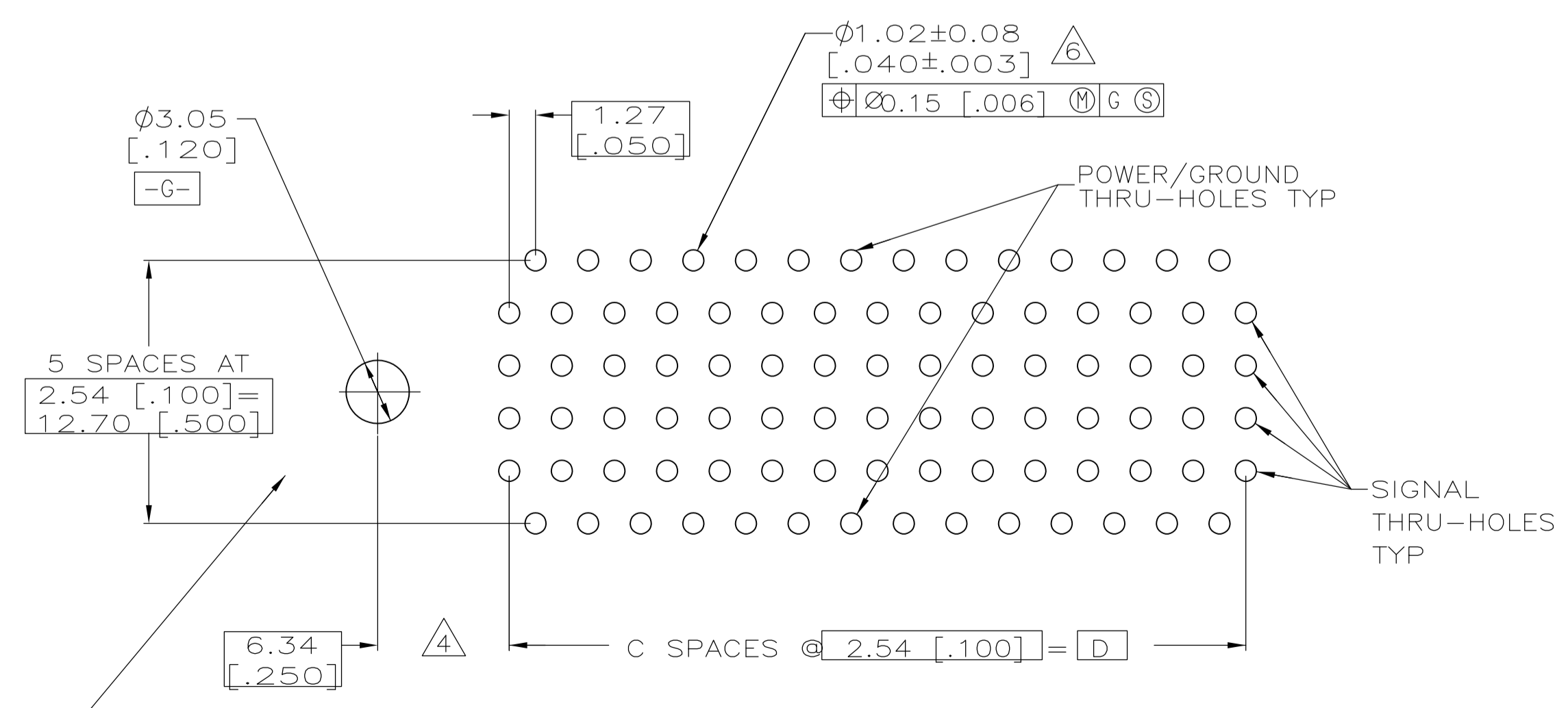
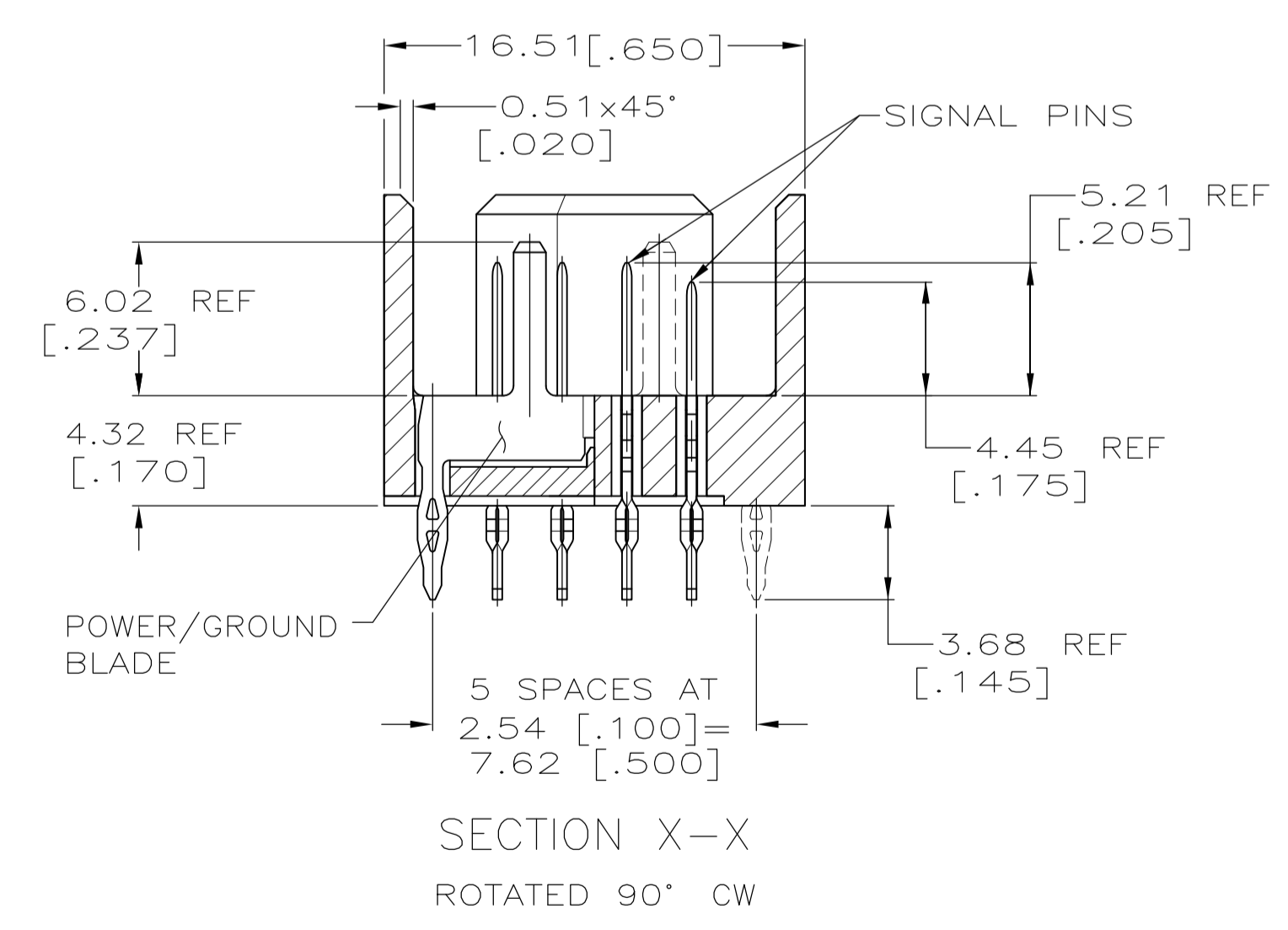
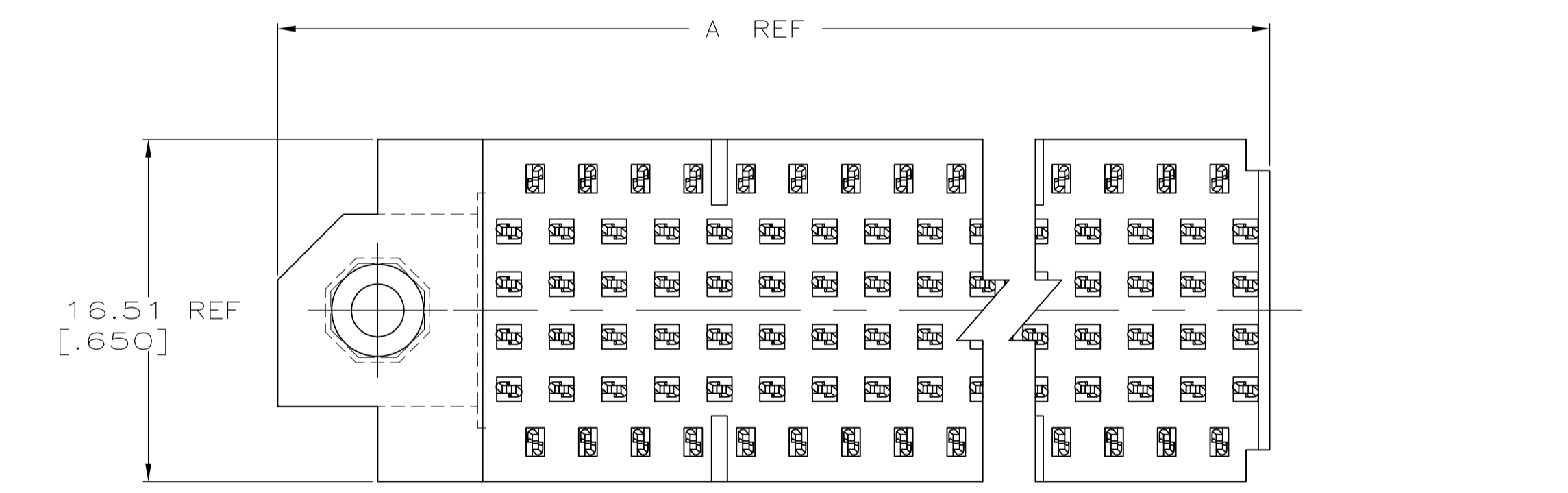
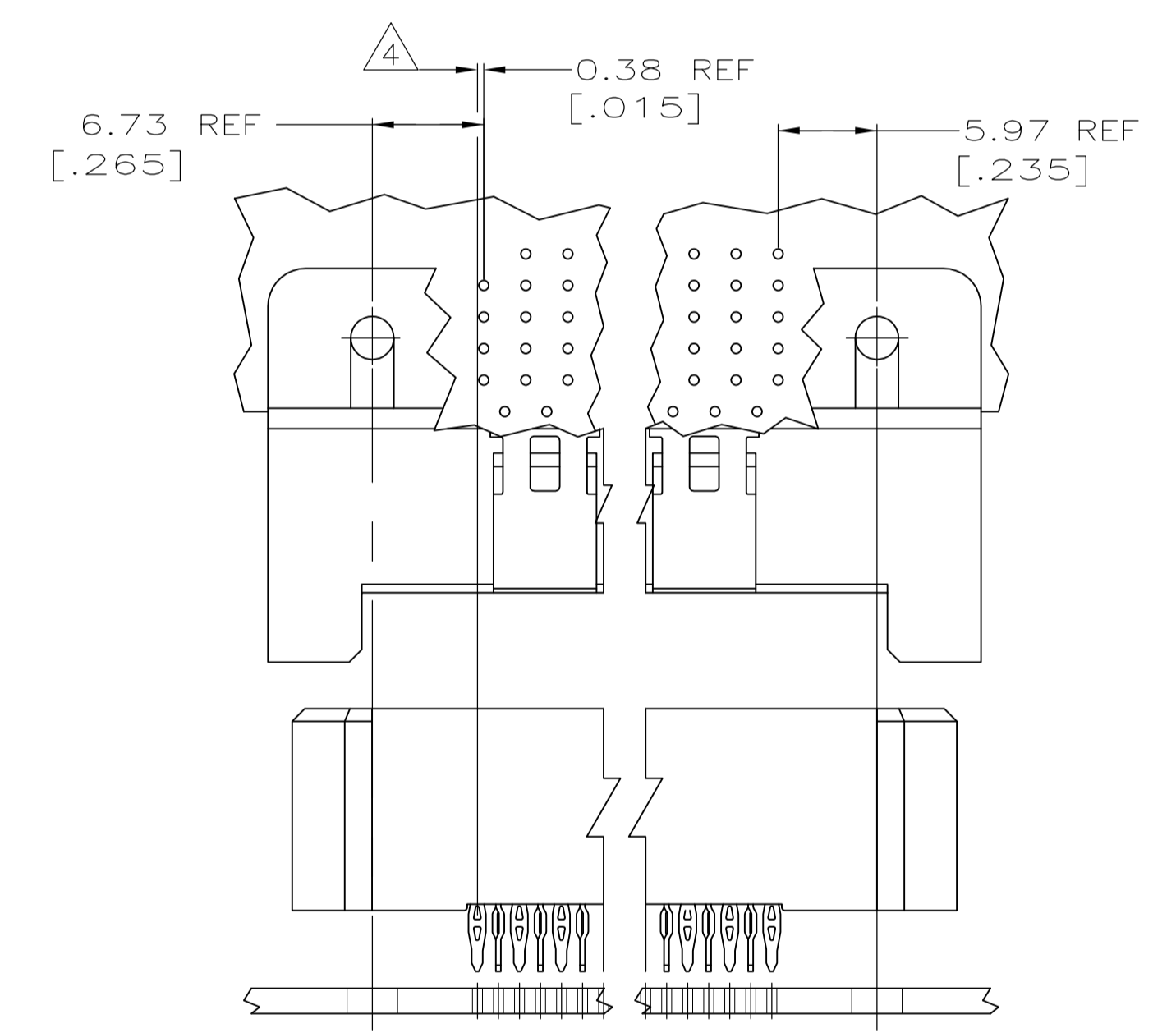
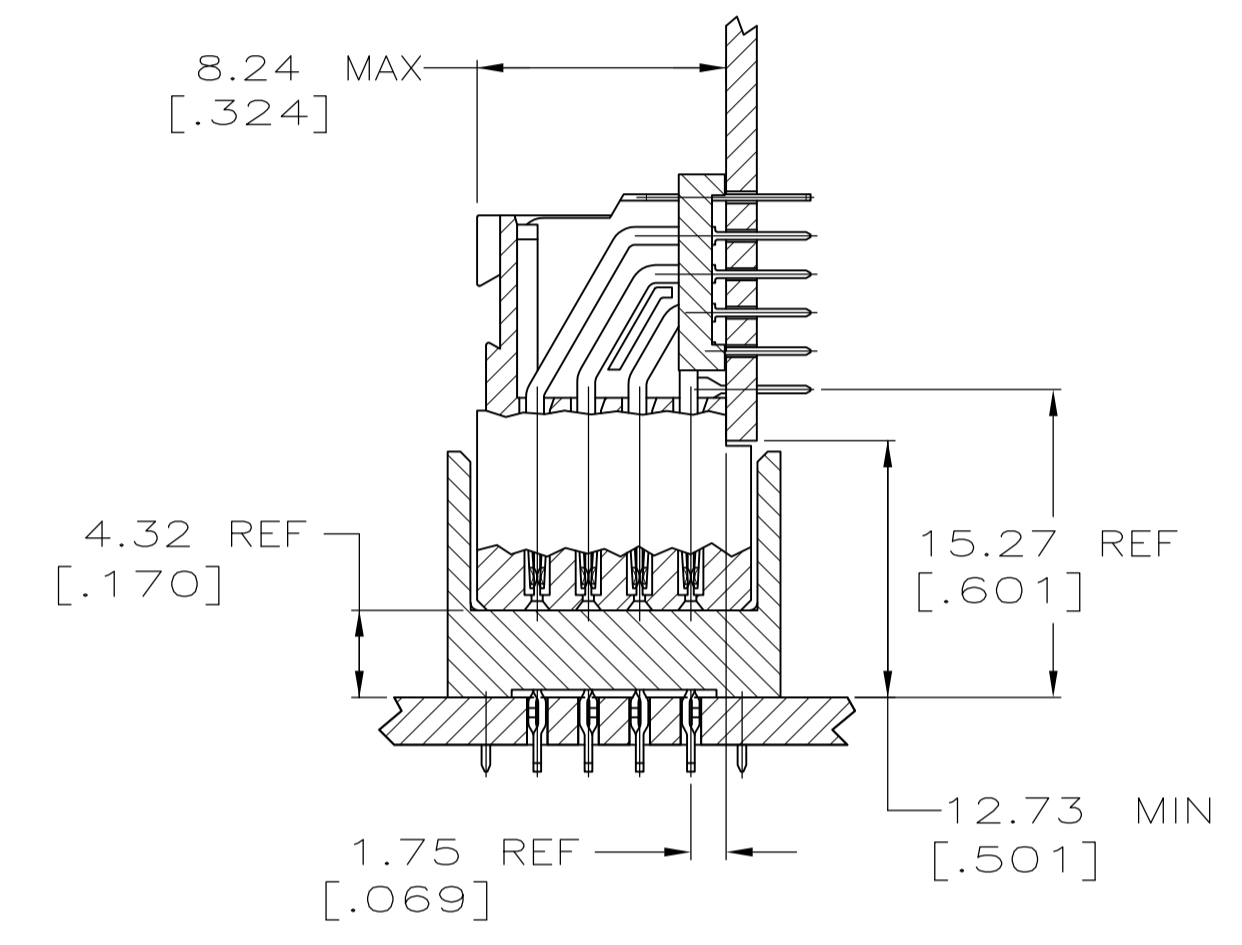
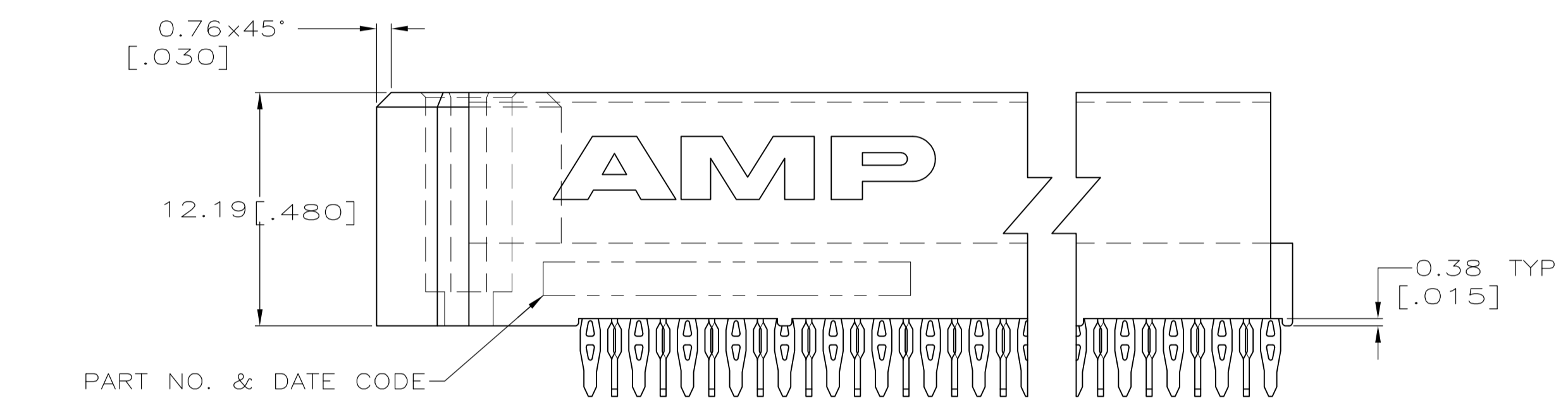


LOC		DIST		REVISIONS				
AD	00	REV	DATE	BY	CHK	APPV		
01	REVISED PER ECO-12-005999	09APR12	KH	MH				



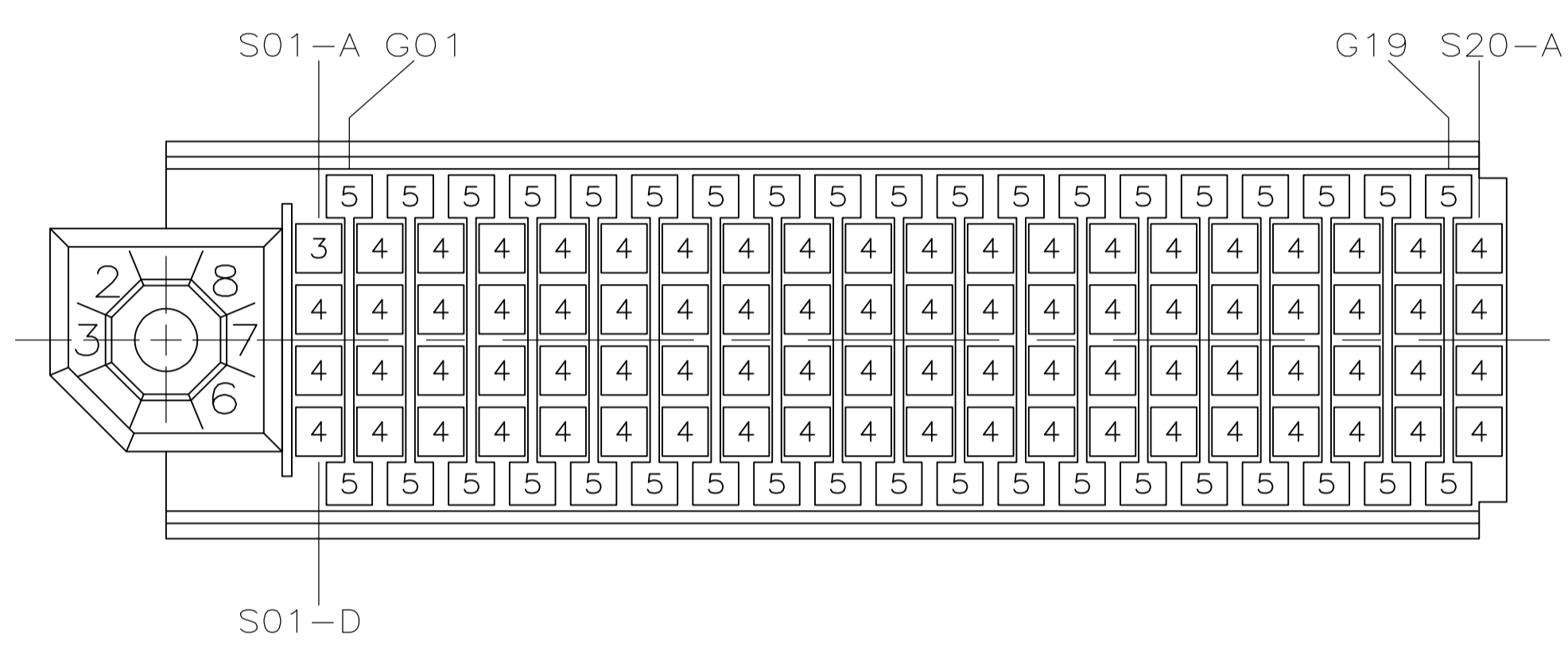
- 1 HOUSING AND ORGANIZER MATERIAL: LIQUID CRYSTAL POLYMER, COLOR, BLACK
- 2 SIGNAL AND GROUND PLANE CONTACT MATERIAL: PHOSPHOR BRONZE
- 3 CONTACT FINISH: 0.00127[.00050] MIN. NICKEL UNDERPLATE, GOLD FLASH OVER 0.00076[.000030] MIN. PALLADIUM-NICKEL ON CONTACT AREA, 0.0005[.000020] MIN MATTE TIN ON ACTION PIN AREA OF CONTACT TAILS.
- 4 RECEPTACLE ASSEMBLY LEADS ARE OFFSET .015 TOWARD THE LETTER END OF THE CAVITY CENTERLINE. THE PIN ASSEMBLY LEADS ARE IN LINE WITH THE CAVITY CENTERLINE.



RECOMMENDED CURCUIT PATTERN PER ANSI/IPC-D-300 TYPE II, CLASS C (COMPONENT SIDE)

48.28 [1.900]	19	-	60.55 [2.384]	80	5646619-2
D	C	-	A	NO OF SIGNAL POS	PART NO

THIS DRAWING IS A CONTROLLED DOCUMENT.		DIN J. POLIGNONE 29JUL05	 TE Connectivity
DIMENSIONS: mm [INCHES]		CHK G. GRIFFITH 29JUL05	
TOLERANCES UNLESS OTHERWISE SPECIFIED:		APPV G. GRIFFITH 29JUL05	NAME Z-PACK Stripline 100, PIN HEADER SUB-ASSEMBLY LEFT END MODULE APPLICATION SPEC 108-1244 3.68 [.145] ACTION PIN LEAD LENGTH
0 PLC ± -		PRODUCT SPEC	
1 PLC ± -		SIZE	CAGE CODE DRAWING NO 104-1065 A1 00779 C=5646619
2 PLC ± 0.51 [.02]		RESTRICTED TO	
3 PLC ± 0.25 [.010]		WEIGHT	CUSTOMER DRAWING SCALE 4:1 SHEET 1 OF 2 REV 01
4 PLC ANGLES ± -		FINISH	



5646619-2 SUB-ASSEMBLY  
 ( 80 POSITIONS )

POWER/GROUND CONTACT  
 LOAD PATTERN  
 (MATING FACE)

ITEM DESCRIPTION	LEAD LENGTH REF	POST LENGTH REF	ITEM NUMBER
POWER/GROUND	.145	.237	5
SIGNAL	.145	.205	4
SIGNAL	.145	.175	3

THIS DRAWING IS A CONTROLLED DOCUMENT.		DIN J. POLIGNONE 29JUL05	TE Connectivity
		CHK G. GRIFFITH 29JUL05	
		APPV G. GRIFFITH 29JUL05	NAME Z-PACK Stripline 100, PIN HEADER SUB-ASSEMBLY LEFT END MODULE
DIMENSIONS: mm [INCHES]		TOLERANCES UNLESS OTHERWISE SPECIFIED:	PRODUCT SPEC 108-1244
		0. PLC ± -	APPLICATION SPEC 104-1065
		1. PLC ± -	SIZE A1
		2. PLC ± 0.51 [.02]	SCALE 4:1
		3. PLC ± 0.25 [.010]	SHEET 2 OF 2
		4. PLC ± -	REV Q1
		ANGLES ± -	
MATERIAL	FINISH	WEIGHT	CUSTOMER DRAWING
		-	