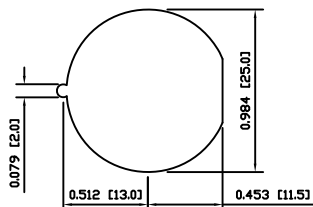
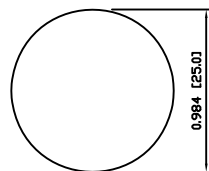


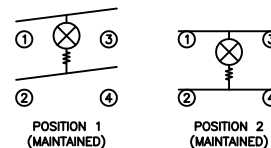
SUGGESTED PANEL CUTOUT



ALTERNATE PANEL CUTOUT



SCHMATIC



SPECIFICATIONS

FUNCTION:
 2P1T OFF-ON

RATINGS:
 ANSI/UL 1054 and CAN/CSA C22.2 No.55 (E194579):
 16A 125VAC [UR, cUR]
 1/2HP 125VAC [UR, cUR]
 3/4HP 250VAC [UR, cUR]

EN 61058-1:2002:
 16(6)A 250V~ 1E4 T125/55 [ENEC14, SEMKO]
 10(4)A 250V~ 5E4 T125/55 [ENEC14, SEMKO]

ILLUMINATION VOLTAGE:
 125V

CONTACT RESISTANCE:
 Initial: 35mΩ Max. at 50VAC

INSULATION RESISTANCE:
 100MΩ Min. at 500VDC

DIELECTRIC STRENGTH:
 1,500VAC For 1 Minute

ELECTRICAL LIFE:
 6,000 Cycles [UR, cUR]
 10,000 Cycles [ENEC14, SEMKO]
 50,000 Cycles [ENEC14, SEMKO]

TEMPERATURE:
 Operating: -20°C to 105°C [UR, cUR]
 Operating: -20°C to 125°C [ENEC14, SEMKO]

APPROVALS:



COLORS AND MARKINGS

BODY:
 White

ACTUATOR:
 Transparent Green
 Glossy Finish

MARKINGS:
 None

MARKING COLOR:
 None

MATERIALS

BODY:
 Polyamide 6/6 (PA66), UL94 V-2

ACTUATOR:
 Polycarbonate (PC), UL94 V-2

CONTACT CARRIER:
 Polyamide 6/6 (PA66), UL94 V-2

LAMP:
 Neon Bulb

RESISTOR:
 Carbon Film Resistor

SPRINGS:
 Steel

MOBILE CONTACT:
 Silver Plated Copper

CONTACTS:
 Silver Plated Copper

TERMINALS:
 Silver Plated Copper

BODY	A	09/08/07	CAB
COLORS	A	10/05/10	CAB
MATERIALS	A	09/08/07	CAB
SPECIFICATIONS	B	10/05/25	CAB
REFERENCE	REV.	DATE	BY

THE INFORMATION CONTAINED IN THIS DOCUMENT IS PROPRIETARY TO E-SWITCH AND IS NOT TO BE COPIED OR TRANSFERRED

A	INITIAL RELEASE	19434	10/11/17	CAB
REV.	DESCRIPTION	PCR	DATE	DRAWN BY

DIMENSIONS	INCHES [MILLIMETERS]
GENERAL TOLERANCES	±0.008 [±0.2] / ±1°
SCALE	DRAWING NOT TO SCALE
PROJECTION	1st Angle

TITLE
 PR142C2000-136

ITEM NUMBER
 38-PR142C2000136

DATE
 NOVEMBER 17, 2010

REVISION
 A