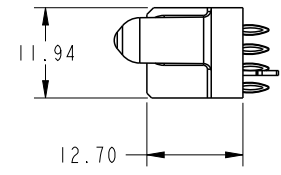
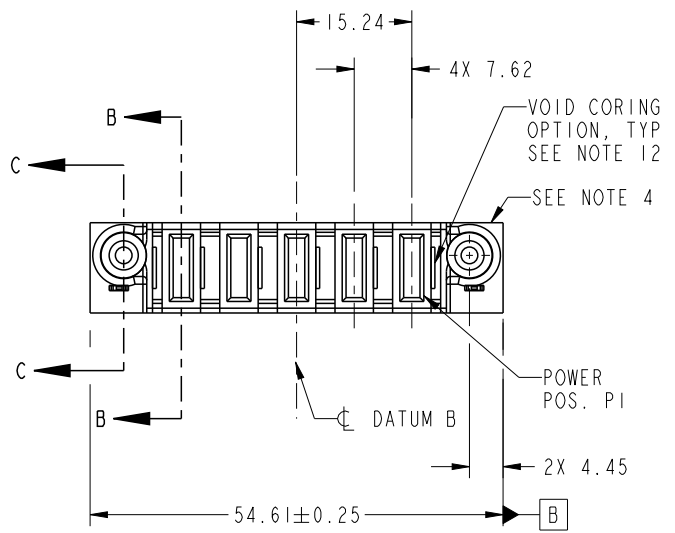




Copyright FCI.

PRODUCT NO. 51940-387-- NOTE: 3	POWER						E1
	E2	P5	P4	P3	P2	P1	



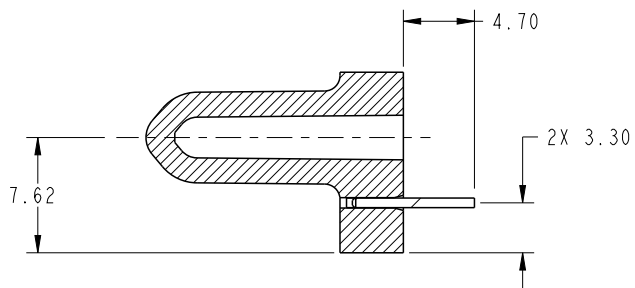
CODE	DIM "M" MATING LENGTH	CONTACT TYPE
PF	[2.34]	POWER
HA	[N/A]	HOLD-DOWN

spec ref	See Notes		dr	X Q Wang	2011/04/02	projection 	MM ←→	size	A4	scale	1:1
tolerance std	TOLERANCES UNLESS OTHERWISE SPECIFIED		eng	Anson Liu	2011/06/14			ecn no	-		
See Notes			chr	-	-			rel level	Released		
surface	linear	0.X ±0.5 0.XX ±0.25 0.XXX ±0.1	appr	Pei-Ming Zheng	2011/06/15	product family	PwrBlade	rev	A		
	angular	0° ±2°	www.fci.com		cat. no.	-	Product - Customer Drw	sheet 1 of 4			

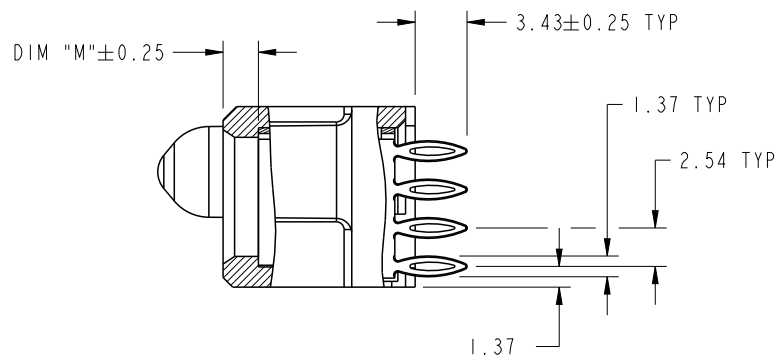
PrdrE File - REV C - 2009-06-09

PRODUCT NUMBER

51940-387--
NOTE: 3



SECTION C-C
SCALE 2:1



SECTION B-B
SCALE 2:1

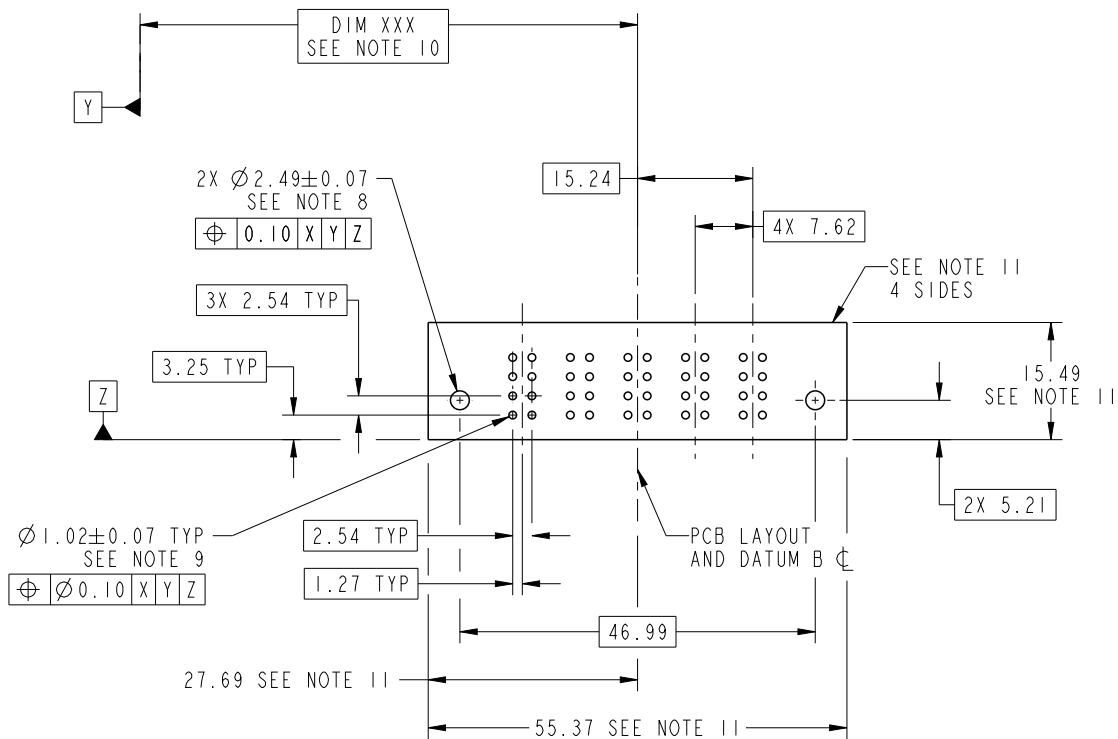


Copyright FCI.

spec ref		See Notes		dr	X Q Wang	2011/04/02	projection 	MM 	size	A4	scale	1:1
tolerance std		TOLERANCES UNLESS OTHERWISE SPECIFIED		eng	Anson Liu	2011/06/14			ecn no	-		
See Notes				chr	-	-				-		
surface		linear	0.X ±0.5 0.XX ±0.25 0.XXX ±0.1	appr	Pei-Ming Zheng	2011/06/15	product family		PwrBlade	rel level	Released	
		angular	0° ±2°			www.fci.com	title		5ACP VERTICAL PF RECEPT	dwg no	51940-387	
				cat. no.		-	Product - Customer Drw		sheet 2 of 4		rev	A

PRODUCT NUMBER

51940-387__
NOTE: 3



RECOMMENDED PCB LAYOUT

spec ref	See Notes			dr	X Q Wang	2011/04/02	projection 	MM ←→	size	A4	scale	1:1		
tolerance std	TOLERANCES UNLESS OTHERWISE SPECIFIED			eng	Anson Liu	2011/06/14			ecn no	-				
See Notes				chr	-	-			rel level	Released				
surface	linear	0.X	±0.5	FCI	www.fci.com	title	5ACP	dwg no	51940-387	rev	A			
		0.XX	±0.25								cat. no.	-	Product - Customer Drw	sheet 3 of 4
		0.XXX	±0.1											
	angular	0°	±2°											

PRODUCT NUMBER

51940-387--
NOTE: 3

NOTES:

1. DIMENSIONS AND TOLERANCES ARE IN ACCORDANCE WITH ASME Y14.5M, 1994 UNLESS OTHERWISE SPECIFIED.

CONNECTOR NOTES:

- ② HOUSING MATERIAL: UL 94 V-0 GLASS FILLED HIGH-TEMP THERMOPLASTIC
POWER CONTACT MATERIAL: COPPER ALLOY
SIGNAL PIN MATERIAL: COPPER ALLOY
- 3. PLATING SPEC.
SEE ITEM 7 & 8 IN PRINT 10064183 FOR PLATING SPEC OF 51940-387; 51940-387LF PRESPECTIVELY
- ④ MANUFACTURER'S NAME, P/N, AND DATE CODE TO APPEAR ON THIS SURFACE.
- 5. PRODUCT SPECIFICATION GS-12-149.
APPLICATION SPECIFICATION BUS-20-067.
- 6. PACKAGED IN TRAYS.
PCB NOTES:
7. ALL HOLE DIAMETERS ARE FINISHED HOLE SIZE.
- ⑧ MOUNTING HOLES, WHERE APPLICABLE, ARE UNPLATED.
- ⑨ $\varnothing 1.151 \pm 0.025$ DRILLED HOLES PLATED WITH
0.008 MIN SnPb OR Sn OVER 0.03
TO 0.08 Cu PLATING TO ACHIEVE
 $\varnothing 1.02 \pm 0.07$ HOLE.
- ⑩ "DIM XXX" TO BE DETERMINED BY THE CUSTOMER.
- ⑪ CONNECTOR KEEP-OUT ZONE.
- 12. THE VOID CORING IN BETWEEN POWER MODULES, SIGNAL MODULES AND END MODULES ARE OPTIONAL AND THE SHAPE MAY BE DIFFERENT FOR OPTIMIZE THE MOLDING PROCESS. THE VOID CORING WILL NOT EFFECT TO PRODUCT FUNCTION.



Copyright FCI.

spec ref		See Notes		dr	X Q Wang	2011/04/02	projection 	MM 	size	A4	scale	1:1
tolerance std		TOLERANCES UNLESS OTHERWISE SPECIFIED		eng	Anson Liu	2011/06/14			ecn no	-		
See Notes				chr	-	-			rel level		Released	
surface <input checked="" type="checkbox"/>		linear	0.X	± 0.5	FCI 	title	5ACP	dwg no	51940-387	rev	A	
			0.XX	± 0.25								
			0.XXX	± 0.1								
		angular	0°	$\pm 2^\circ$	www.fci.com	cat. no.	-	Product - Customer Drw		sheet 4 of 4		