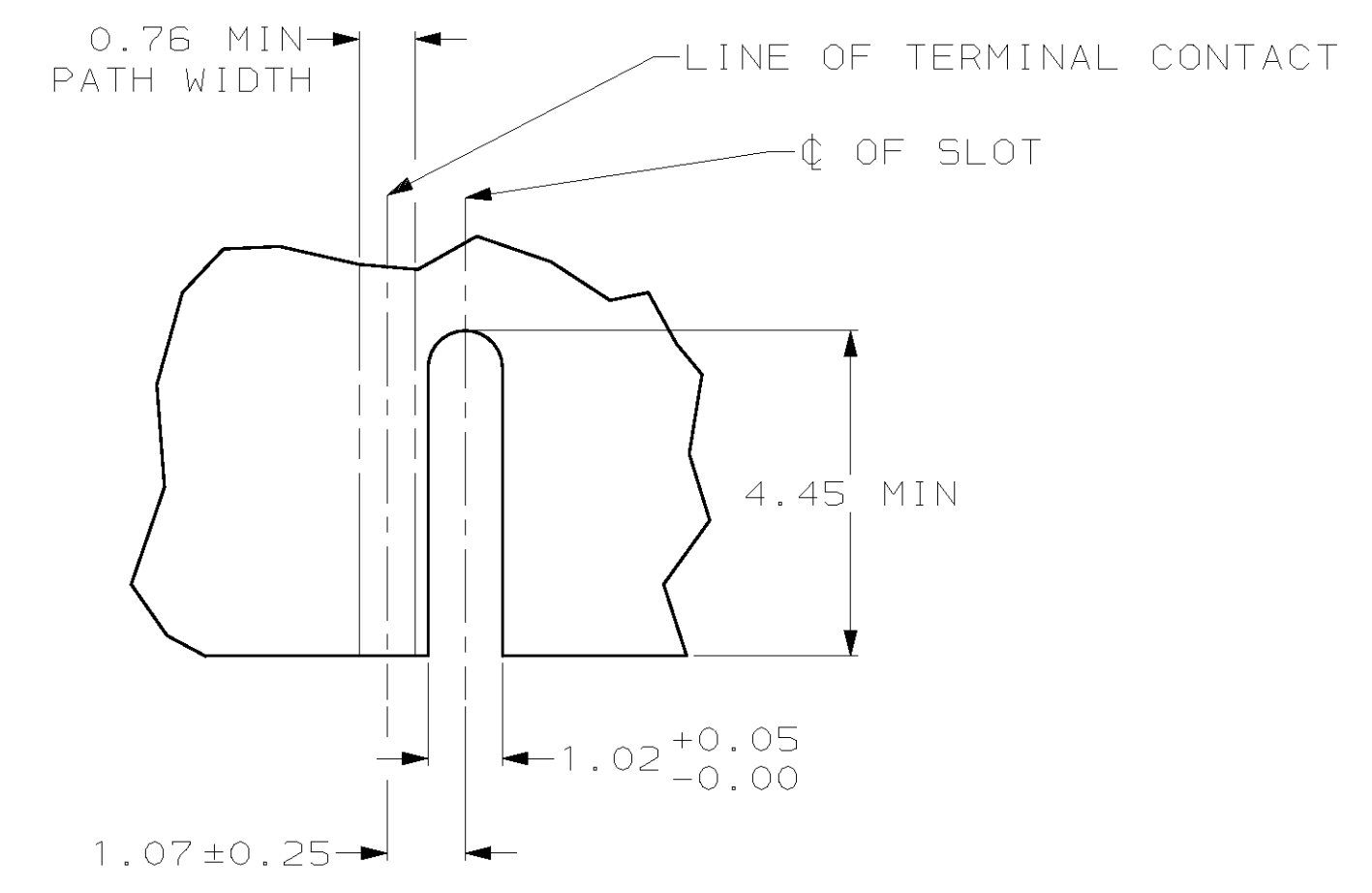
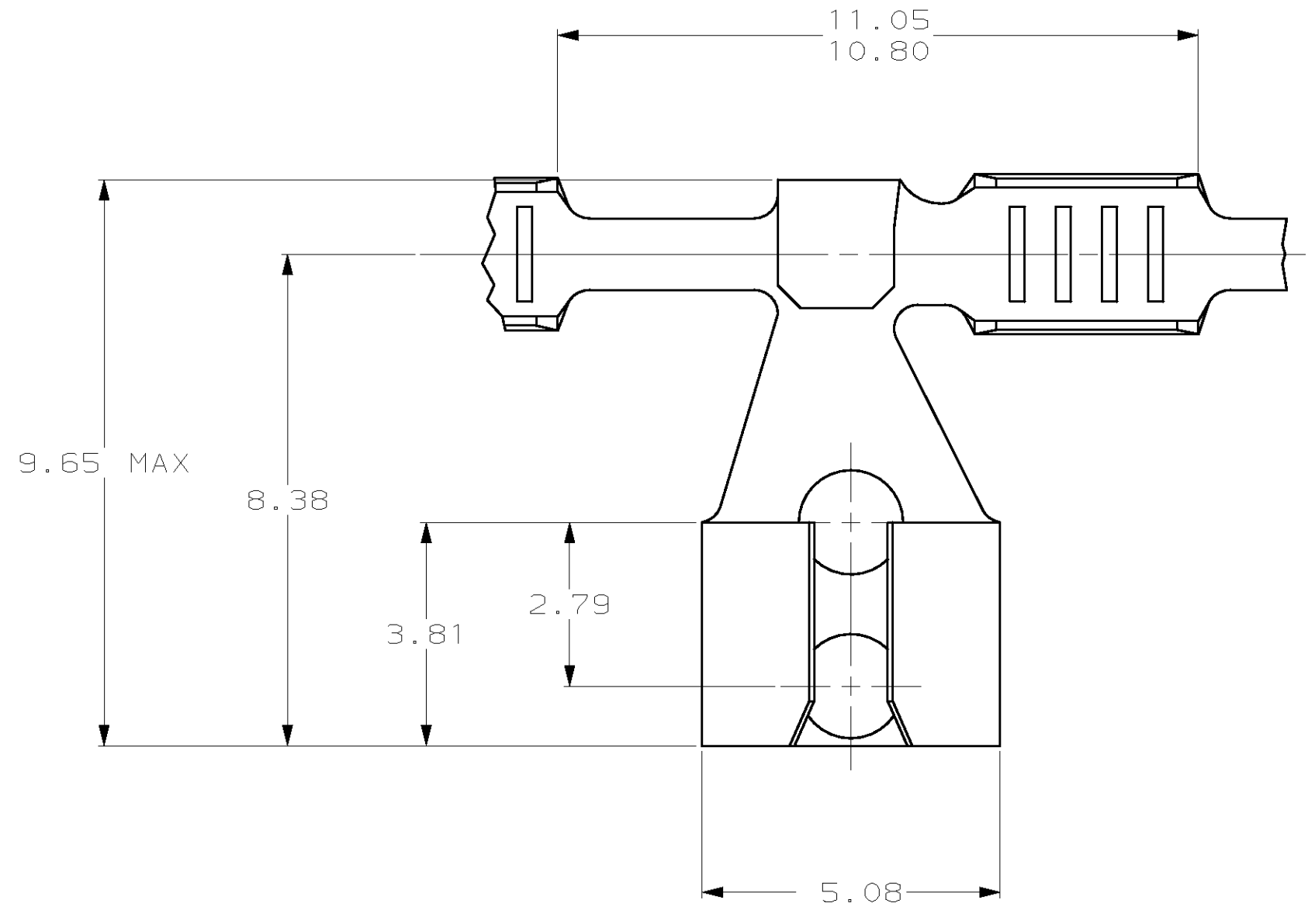


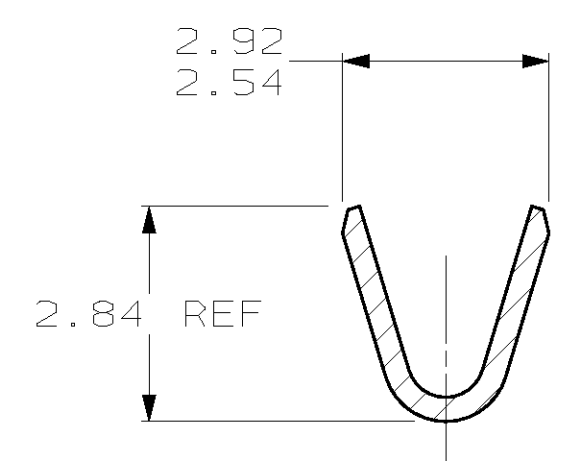
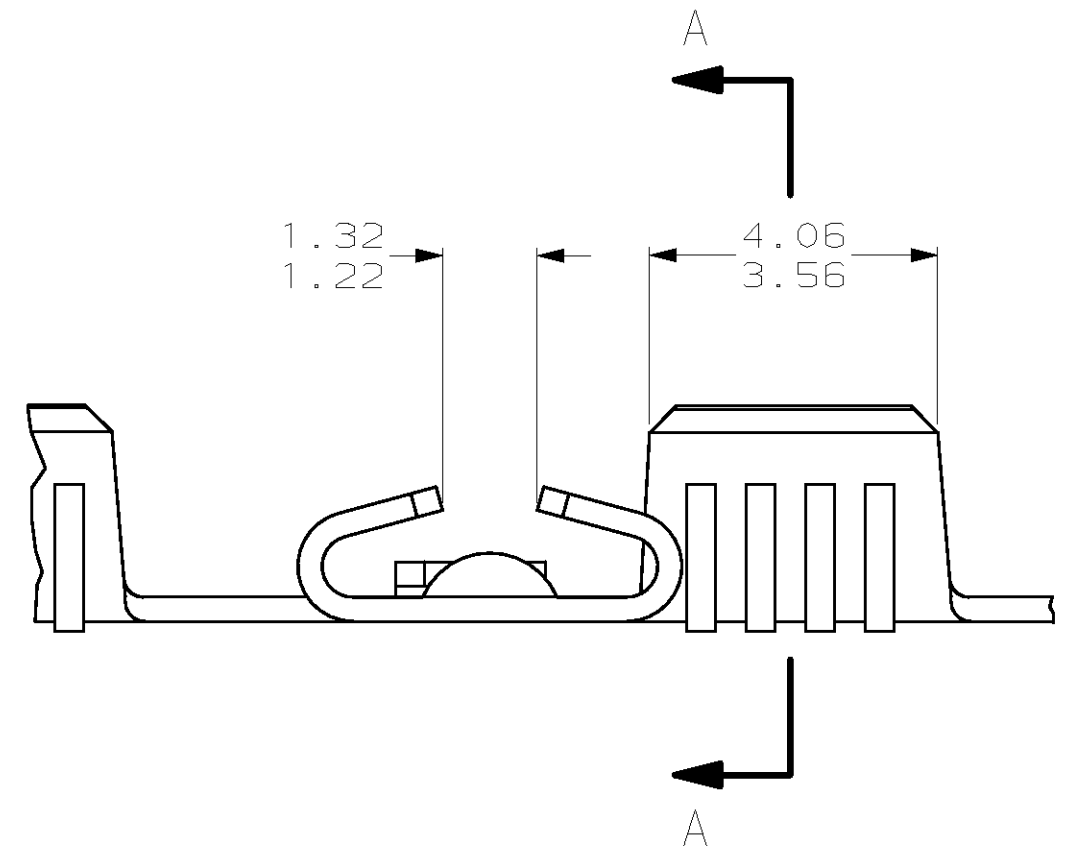
THIS DRAWING IS UNPUBLISHED. RELEASED FOR PUBLICATION .19
 (C) COPYRIGHT 19 BY AMP INCORPORATED. ALL RIGHTS RESERVED.

LOC		DIST		REVISIONS			
P	LTR	DESCRIPTION	DATE	DWN	APVD		
CM	52	E	REV & REDWN PER EC 0L30-0096-97	4-24-97	TB	RS	

1. WIRE RANGE: 0.3 - 1.4 MM² (22 -16 AWG)



RECOMMENDED CUT OUT FOR 1.57 THICK P.C. BOARD



SECTION A-A

MINI	61782-2
STANDARD	61782-1
APPLICATOR	PART NUMBER

1.02	.040	2.84	.112	8.38	.330	-	-
0.76	.030	2.79	.110	5.08	.200	-	-
0.30	.012	2.54	.100	4.45	.175	-	-
0.25	.010	1.57	.062	4.06	.160	-	-
0.13	.005	1.32	.052	3.81	.150	11.05	.435
0.05	.002	1.22	.048	3.56	.140	10.80	.425
0.00	.000	1.07	.042	2.92	.115	9.65	.380
MM	IN	MM	IN	MM	IN	MM	IN

CONVERSION TABLE

METRIC

THIS DRAWING IS A CONTROLLED DOCUMENT.		DWN	T. BECK	4-24-97
DIMENSIONS: mm		CHK	R. SWING	4-24-97
TOLERANCES UNLESS OTHERWISE SPECIFIED:		APVD	A. BEDDICK	4-28-97
0 PLC	±	NAME		
1 PLC	±	AMP Incorporated		
2 PLC	±0.13	Harrisburg, PA 17105-3608		
3 PLC	±	AMP-EDGE™		
4 PLC	±	SIZE CAGE CODE DRAWING NO RESTRICTED TO		
ANGLES	±	A2 00779 C-61782		
MATERIAL	FINISH	WEIGHT	SCALE SHEET OF REV	
0.30 BRASS	TIN	-	10:1	1 1 F
CUSTOMER DRAWING				

61782