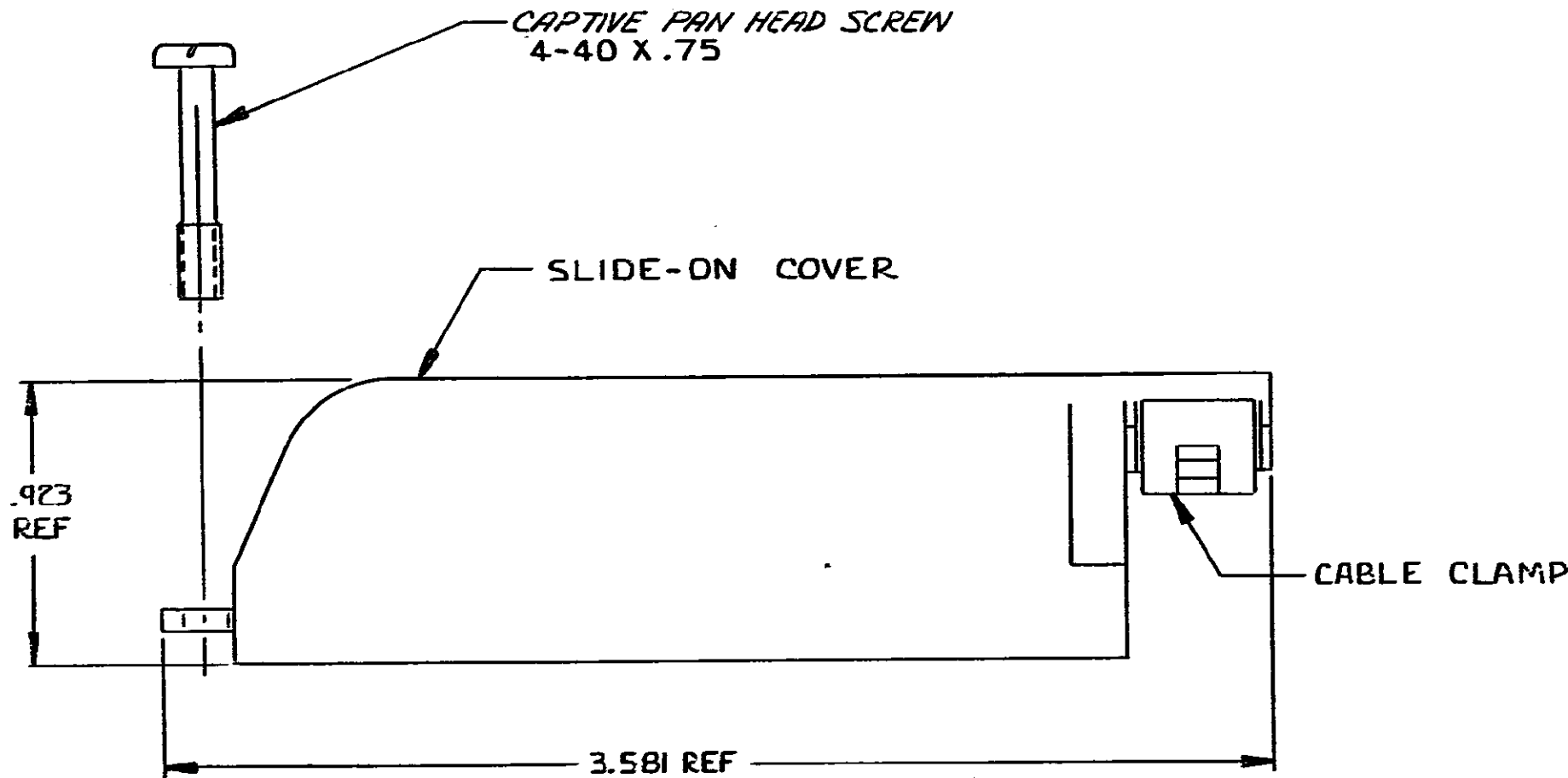


© COPYRIGHT 1973 BY AMP INCORPORATED, HARRISBURG, PA.  
 ALL INTERNATIONAL RIGHTS RESERVED. AMP INCORPORATED PRODUCTS  
 COVERED BY U. S. AND FOREIGN PATENTS AND/OR PATENTS PENDING.

REVISIONS						
P	F	ZONE	LTR	DESCRIPTION	DATE	APPROVED
E			E	OBSOLETE -4; ECNAA-5942	11-1-88	TE

1. THIS KIT SHIPPED NOT ASSEMBLED.
2. 100 KITS BULK PACKED.



CABLE RANGE DIAMETER	PART NO
.500-.550	552960-5
.350-.425	552960-2
.425-.500	552960-1

UNLESS OTHERWISE SPECIFIED DIMENSIONS ARE IN INCHES. TOLERANCES ON: DECIMALS ± .005 ANGLES ± .005	CONTRACT NO	AMP INCORPORATED Harrisburg, Pa.	
	DR <i>Stephen Duce</i> 3-21-79	NAME COVER KIT, 90°, 50 POSITION, SCREW LOCK, CHAMP®	
	CHK <i>V.E. Slack</i> 3/22/79	SIZE <b>B</b>	CODE IDENT NO <b>00779</b>
	MATERIAL THERMOPLASTIC BLACK	APPD <i>J.B. Williams</i> 3/22/79	DRAWING NO <b>552960</b>
FINISH	APPD <i>[Signature]</i> 3/22/79	SCALE 2:1	SHEET 1 OF 1