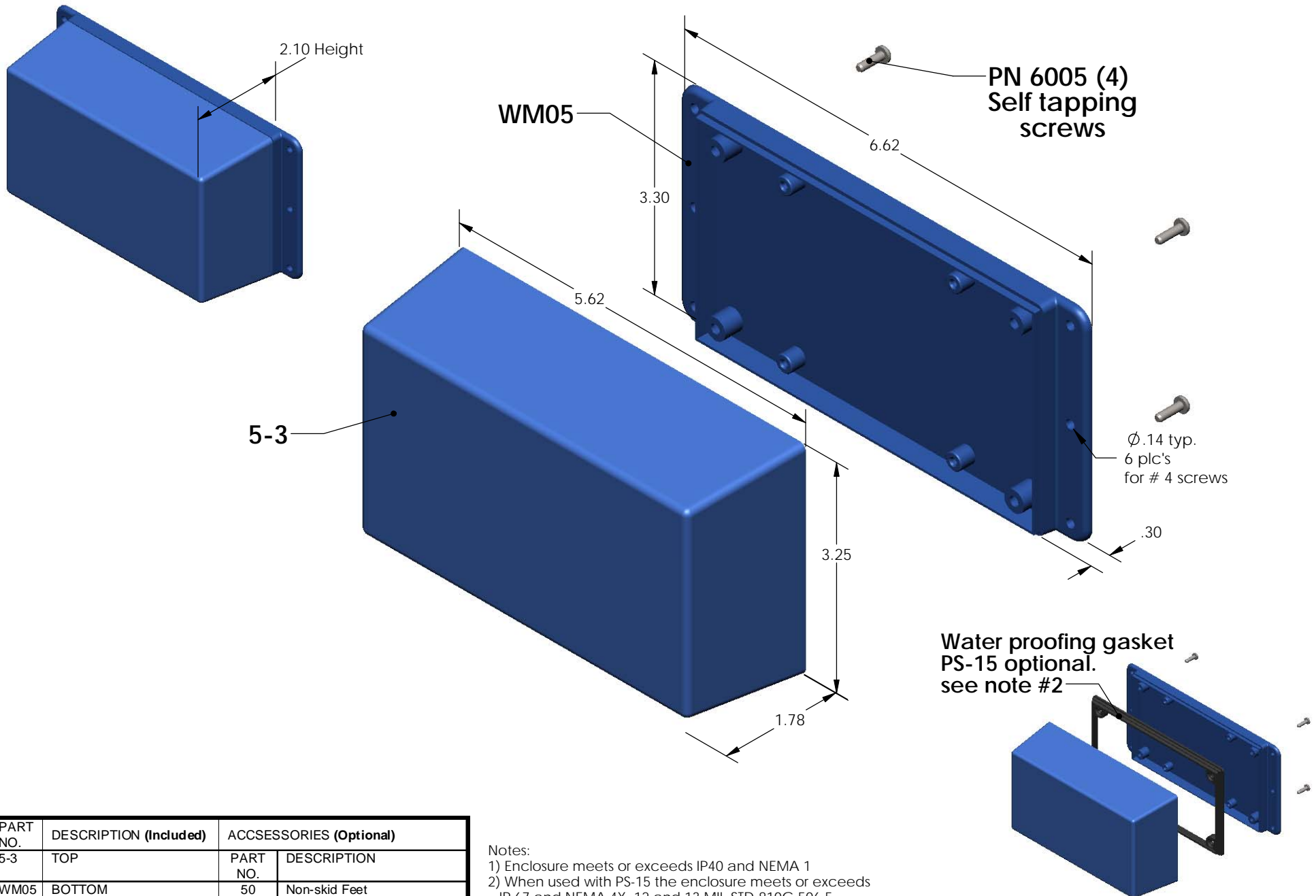


# SERPAC WM053 (exploded isometric)

Electronic Enclosures



PART NO.	DESCRIPTION (Included)	ACCESSORIES (Optional)	
5-3	TOP	PART NO.	DESCRIPTION
WM05	BOTTOM	50	Non-skid Feet
6005	#4 self tapping screw (4)	PS-15	Perimeter Seal

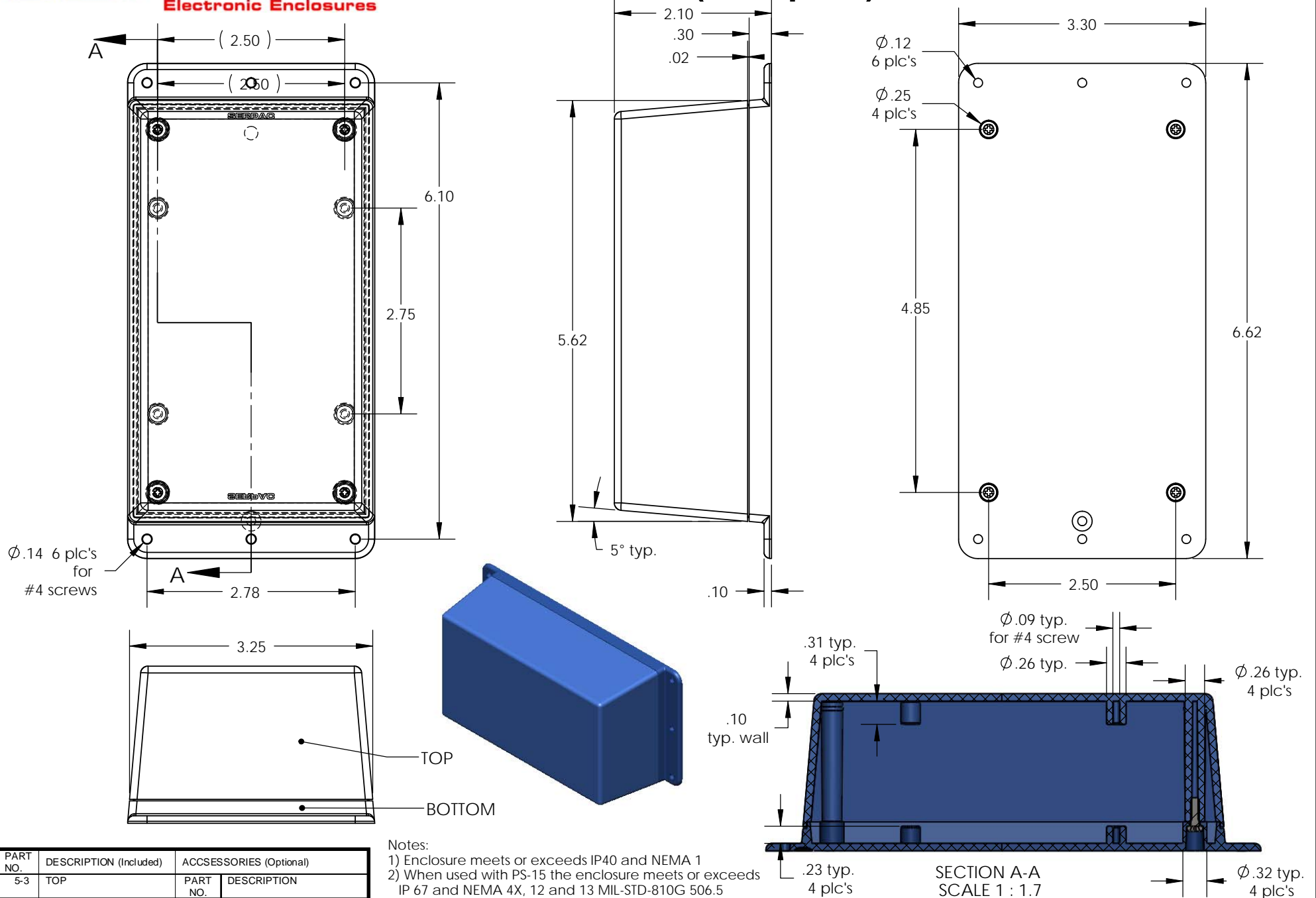
- Notes:
- 1) Enclosure meets or exceeds IP40 and NEMA 1
  - 2) When used with PS-15 the enclosure meets or exceeds IP 67 and NEMA 4X, 12 and 13 MIL-STD-810G 506.5
  - 3) Circuit Board drawings can be download at:  
[http://www.serpac.com/Products/Sseries/x5x/drawings/X53\\_top-CB.pdf](http://www.serpac.com/Products/Sseries/x5x/drawings/X53_top-CB.pdf)
  - 4) All components are RoHS Compliant.

Water proofing gasket  
 PS-15 optional.  
 see note #2

**ALL DIMENSIONS ARE ±.010" 6/02/09 (1 of 2)**  
 619 Commercial Ave. Covina, CA 91723  
 Ph. (626) 331-0517 Fx. (626) 331-8584 [serpac.com](http://www.serpac.com)

# SERPAC WM053 (user print)

Electronic Enclosures



- Notes:
- 1) Enclosure meets or exceeds IP40 and NEMA 1
  - 2) When used with PS-15 the enclosure meets or exceeds IP 67 and NEMA 4X, 12 and 13 MIL-STD-810G 506.5
  - 3) Circuit Board drawings can be download at: [http://www.serpac.com/Products/Sseries/x5x/drawings/X53\\_top-CB.pdf](http://www.serpac.com/Products/Sseries/x5x/drawings/X53_top-CB.pdf)
  - 4) All components are RoHS Compliant.

PART NO.	DESCRIPTION (Included)	ACCESSORIES (Optional)	
5-3	TOP	PART NO.	DESCRIPTION
WM05	BOTTOM	50	Non-skid Feet
6005	#4 self tapping screw (4)	PS-15	Perimeter Seal

ALL DIMENSIONS ARE  $\pm .010"$  6/02/09 (2 of 2)  
 619 Commercial Ave. Covina, CA 91723  
 Ph. (626) 331-0517 Fx. (626) 331-8584 www.serpac.com

**WM053i REVISION HISTORY**

**DATE**

JUNE-2009

**DESCRIPTION**

Top circuit board boss internal height is 0.41" Update from original drawing.

The drawing shows a cross-section of a circuit board boss. Key dimensions and features include:  
 - Top surface: .41 typ. (circled in red), 4 plc's  
 - Wall thickness: .10 typ. wall  
 - Internal hole:  $\phi .09$  typ. for #4 screw  
 - Flange hole:  $\phi .26$  typ., 4 plc's  
 - Bottom hole:  $\phi .32$  typ., 4 plc's  
 - Bottom edge: .23 typ., 4 plc's  
 - Note: exceeds 16.5

SECTION A-A  
SCALE 1 : 1.7

**REV.**

A