

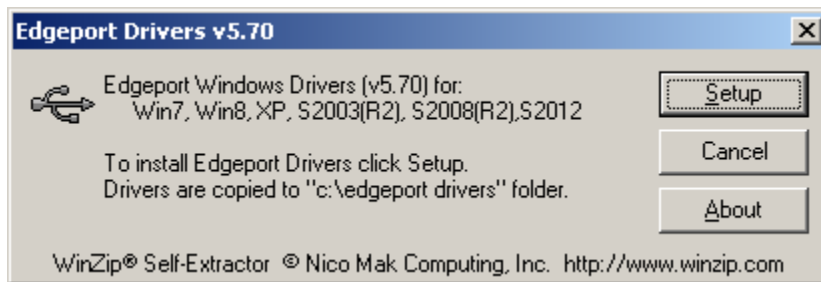
Edgeport Quick Start Guide for Windows

1. Ensure that the Edgeport is not attached to the computer.
2. If a previous Edgeport driver is already installed, uninstall it through the Edgeport Configuration Utility, by clicking the Uninstall button within the Advanced tab, then rebooting the computer when prompted.

3. Download the Edgeport driver.

32-bit/64-bit Edgeport driver v5.70: http://ftp1.digi.com/support/driver/40002537_J.exe

4. Launch the downloaded file 40002537_J.exe.
5. Click the Setup button.

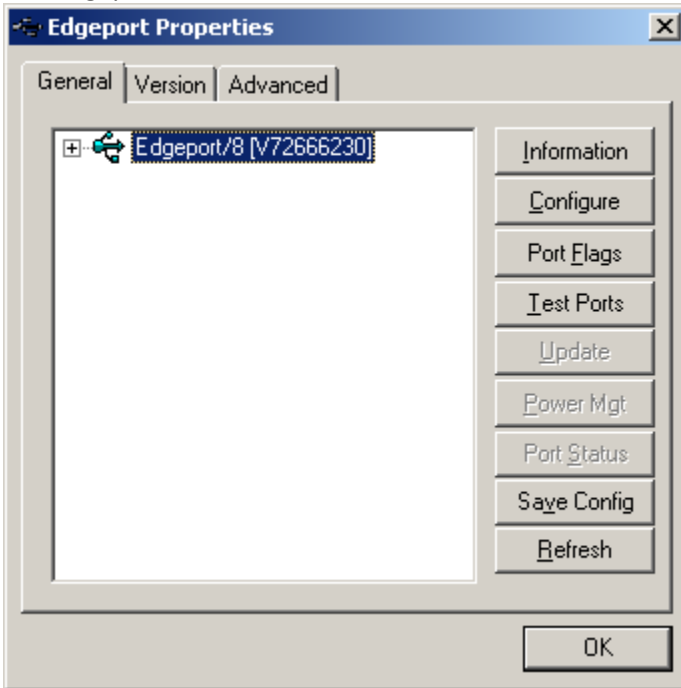


6. After clicking Setup, a small black window should quickly appear then disappear.
7. Attach the Edgeport to a USB port on the computer.
8. The Edgeport should automatically install. This step may take a few minutes to complete. The Edgeport's System Status LED should blink slow Green after it's been successfully installed.

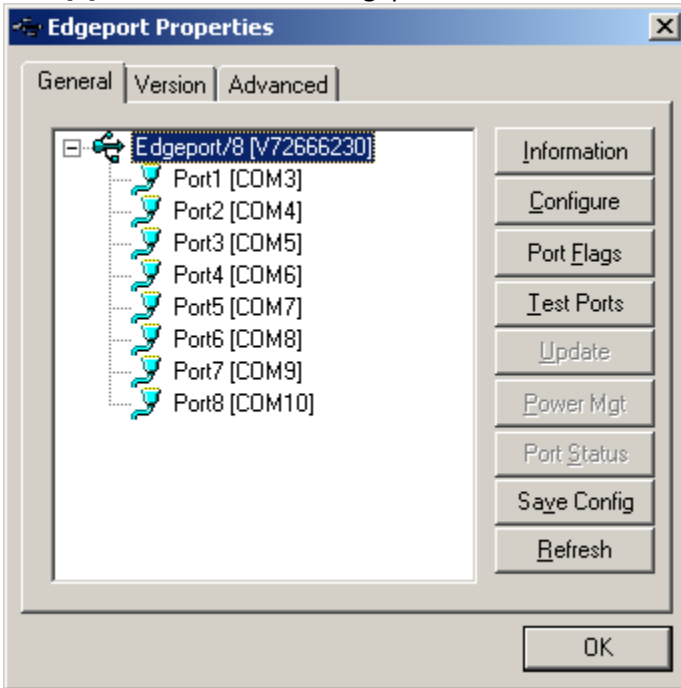
Note: Edgeport/1 models do not have a System Status LED.

9. Confirm that the Edgeport has been successfully installed by launching the Edgeport Configuration Utility from the Windows Start Menu, within the Digi USB folder.

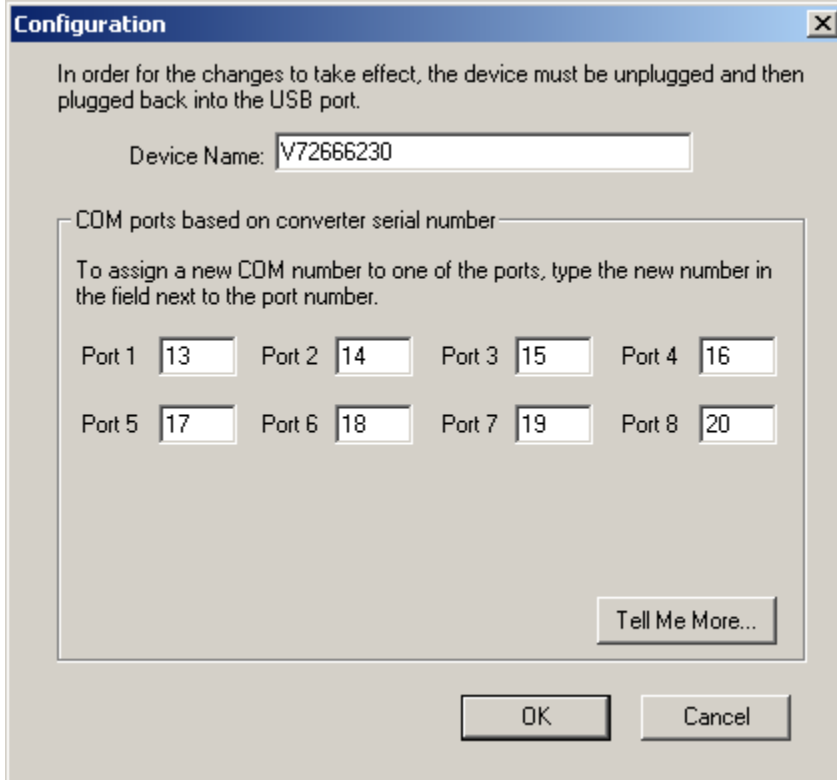
The Edgeport model [serial number] should be listed within the General tab.



Click [+] or double-click the Edgeport to list the current serial/COM port assignments.



10. Optional: If the COM port numbers need to be re-assigned, click the Configure button, input the new COM port numbers, click OK, then unplug/replug the Edgeport's USB cable.



Note: If a warning message appears, stating that certain COM port numbers are already in use, just click OK. This message is usually "false positive" and therefore safely ignored.

Click the Refresh button to confirm that the COM port numbers were re-assigned.

