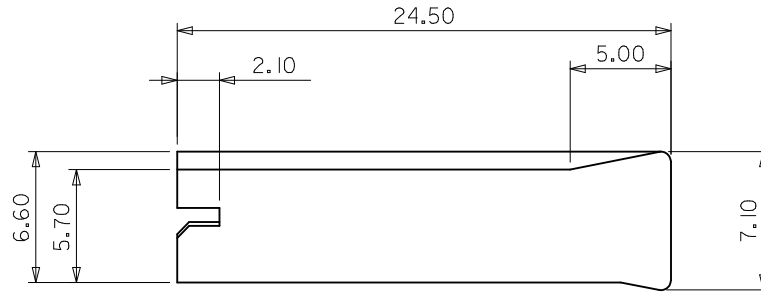
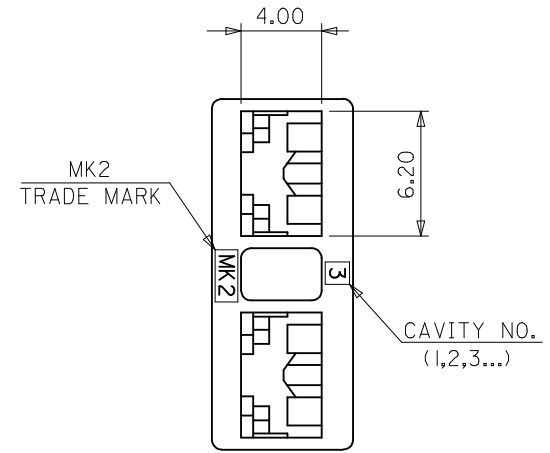
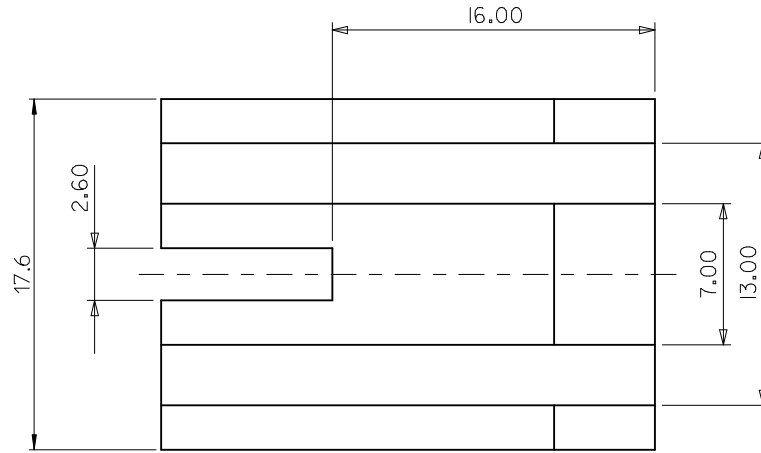
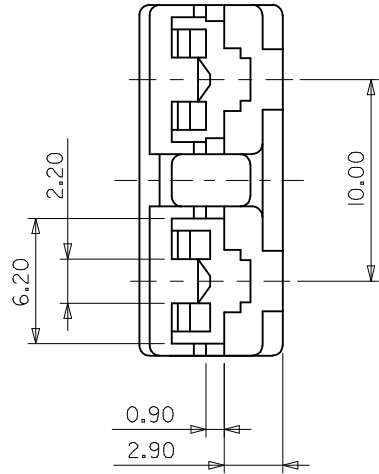


10 9 8 7 6 5 4 3 2 1



NOTES

1. MATERIALS : POLYAMIDE66, UNFILLED, UL94V-0; COLOR: NATURAL(WHITE)
2. PRODUCT SPECIFICATION: PS-35189-004
3. USE WITH: .187 MP-LOCK RECEPTACLE TERMINAL SERIES 35068

| ENG NO. (MATERIAL NO.) | RIB TYPE | |
|---------------------------|----------|-----------------|
| 35189-0281 (351890281) | | BOTH RIB TYPE. |
| 35189-7281 (351897281) | | LEFT RIB TYPE. |
| 35189-8281 (351898281) | | RIGHT RIB TYPE. |

| | | | | | | | | |
|---|---|-------------------------------|---------------------------------------|---|--------------------|---|-------------------------------|---------------------|
| REVISED EC NO: DRWN:JSSHIN CHKD:SHCHU APPR: B1 | DESCRIPTION 2012/12/21 2012/12/21 | QUALITY SYMBOLS ▽=0 ◻=0 | GENERAL TOLERANCES (UNLESS SPECIFIED) | DIMENSION STYLE MM ONLY | SCALE 4:1 | DESIGN UNITS METRIC | THIRD ANGLE PROJECTION | |
| | | | mm INCH | DRAWN BY SK.HAN | DATE 2008/01/02 | TITLE .187 MP-LOCK HOUSING -2P 10MM PITCH | | |
| | | | 4 PLACES ± --- ± --- | CHECKED BY MY.YANG | DATE 2008/01/02 | MOLEX INCORPORATED | | |
| | | | 3 PLACES ± --- ± --- | APPROVED BY EH. JUNG | DATE 2008/01/02 | MATERIAL NO. SEE TABLE | DOCUMENT NO. SD-35189-*281 | SHEET NO. 1 OF 1 |
| | | | 2 PLACES ± 0.25 ± --- | DRAFT WHERE APPLICABLE MUST REMAIN WITHIN DIMENSIONS | | | | |
| | | | 1 PLACE ± 0.25 ± --- | THIS DRAWING CONTAINS INFORMATION THAT IS PROPRIETARY TO MOLEX INCORPORATED AND SHOULD NOT BE USED WITHOUT WRITTEN PERMISSION | | | | |
| | | | ANGULAR ± 1 ° | | | | | |

9 8 7 6 5 4 3 2 1