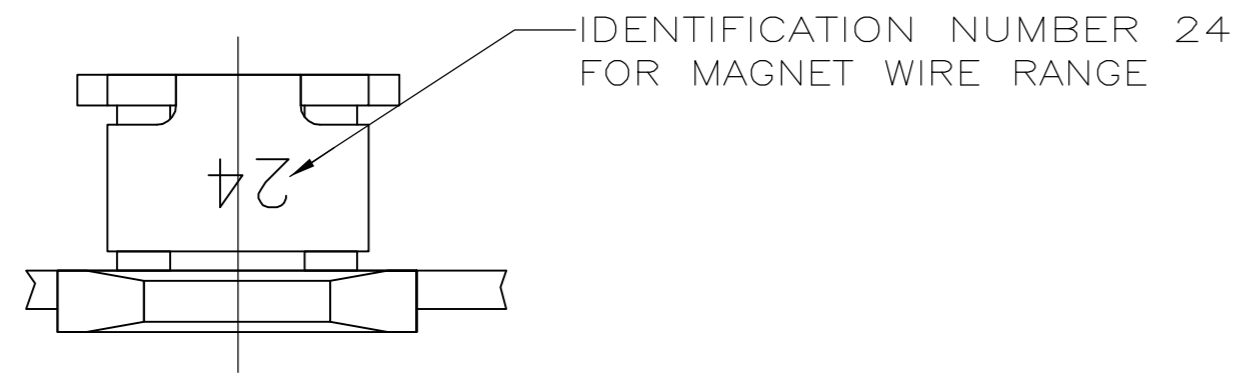
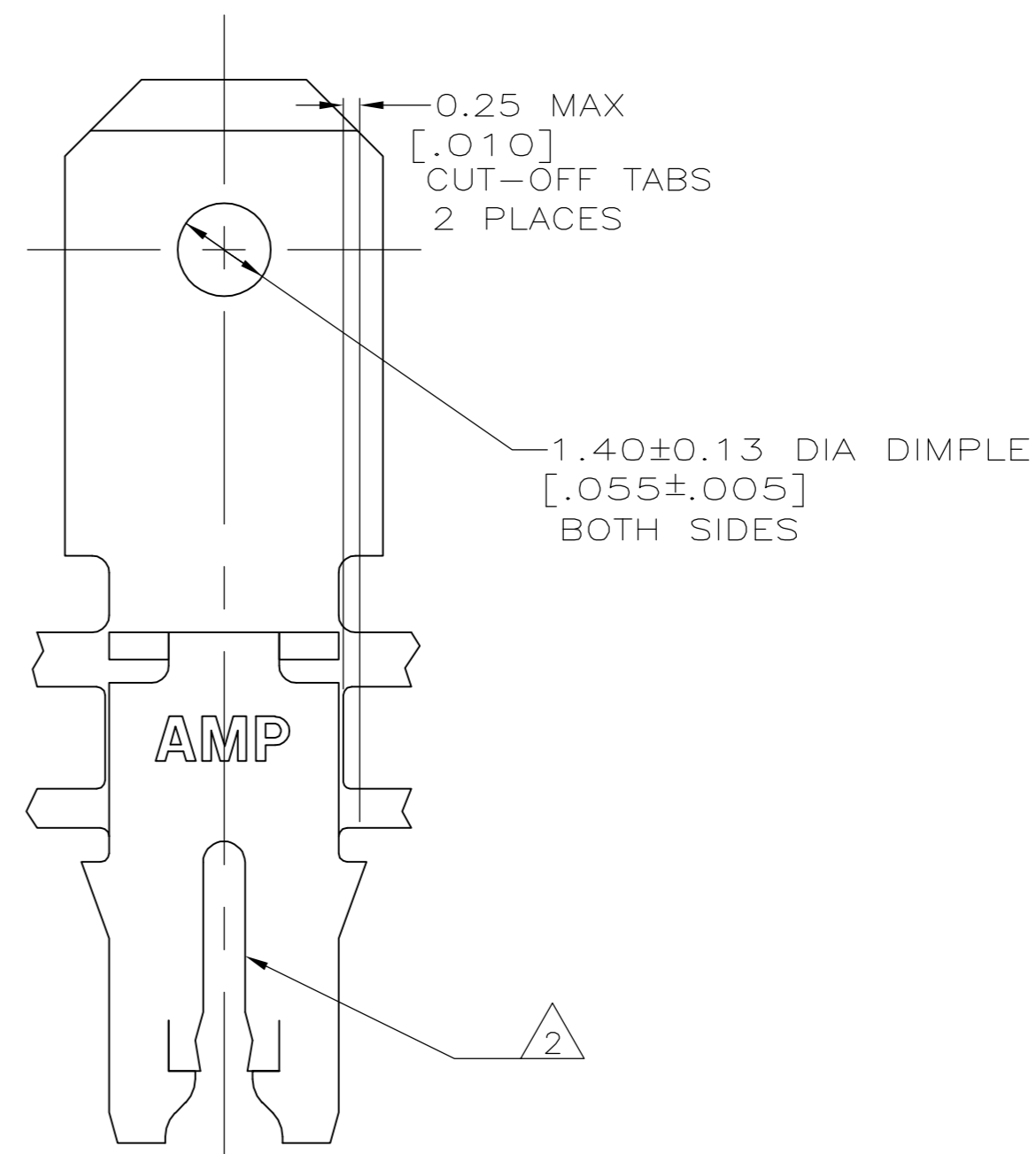
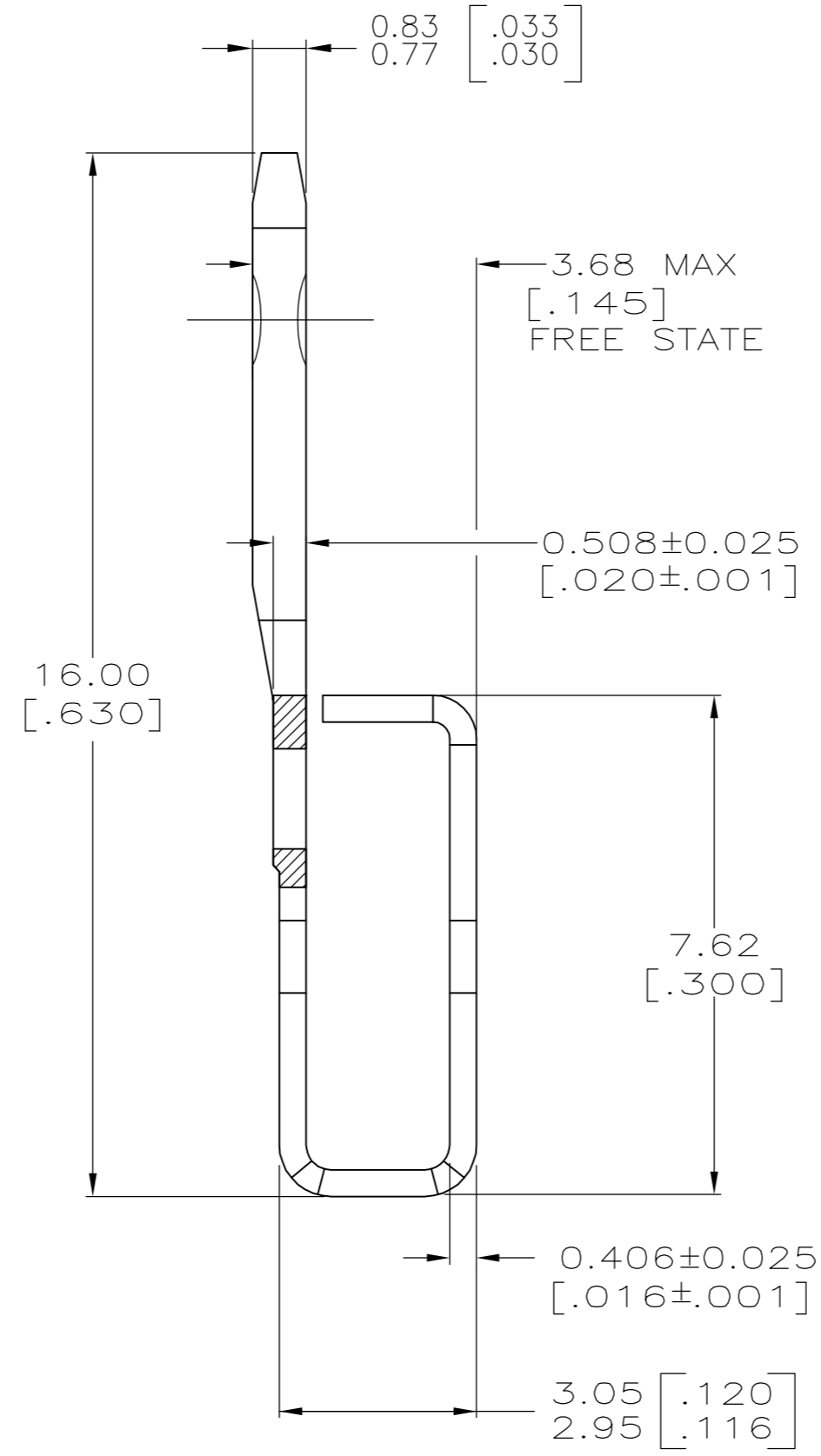
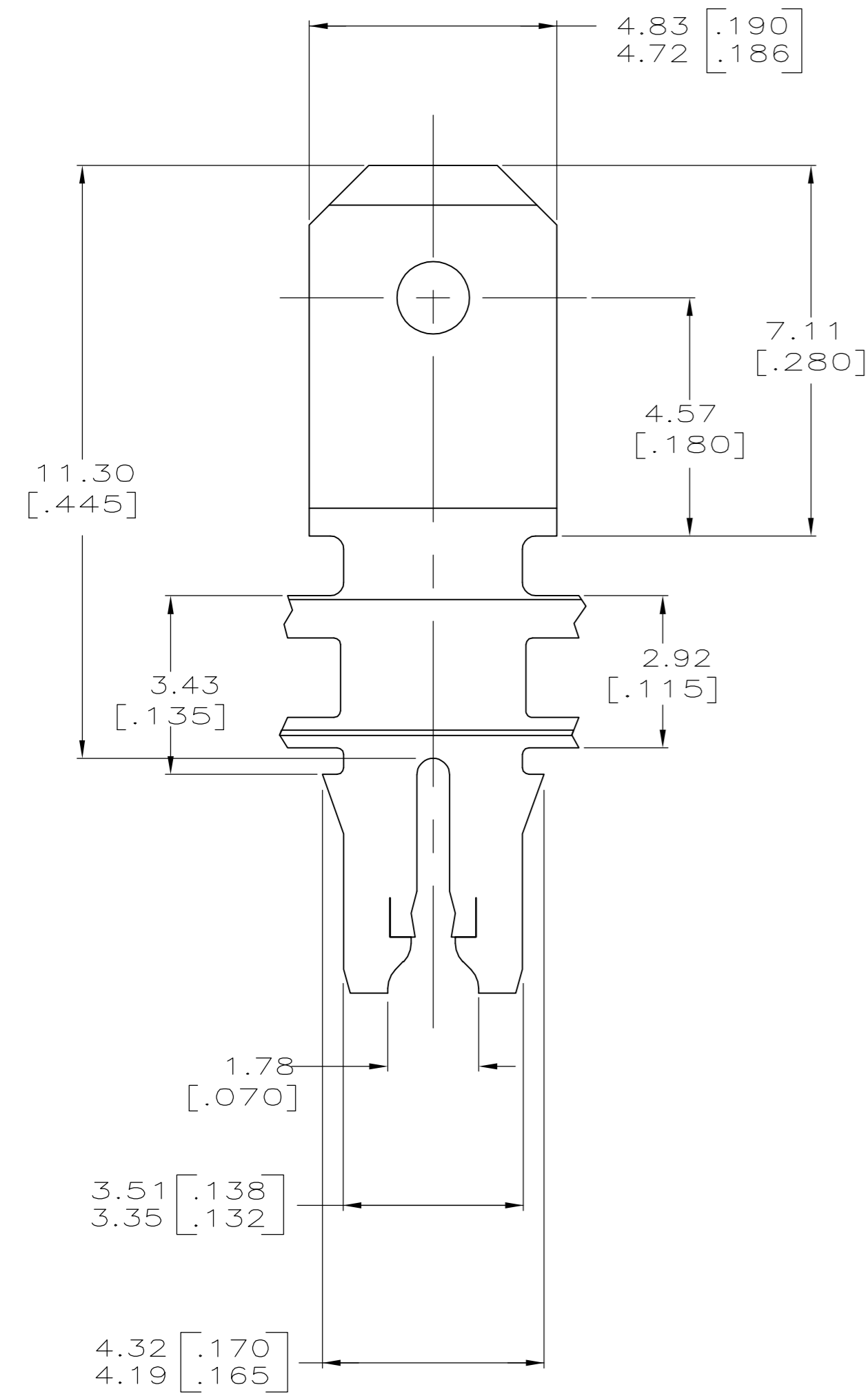


THIS DRAWING IS UNPUBLISHED. RELEASED FOR PUBLICATION
 © COPYRIGHT BY TYCO ELECTRONICS CORPORATION. ALL RIGHTS RESERVED.

LOC		DIST		REVISIONS			
P	LTR	DESCRIPTION		DATE	DWN	APVD	
	B	REVISED PER ECR-06-010412		02NOV06	HMR	KR	



- 1 CONTINUOUS STRIP ON REELS WITH TERMINALS LOCATED ON 5.59±0.08 [.220±.003] CENTERS.
- 2 SLOT TERMINATES A SINGLE MAGNET WIRE ONLY. COPPER REANGE: 0.91-1.15mm [#19-#17] AWG.
- 3 AFTER INSERTION INTO PLASTIC HOLDER TAB PORTION MUST BE BENT OVER 45° TO 90° OR POTTED-IN TO PREVENT PULL-OUT WHEN MATING RECEPTACLE IS DISCONNECTED.
- 4 PREPRODUCTION - FASR REQUIRED



1742035-1
PART NUMBER

THIS DRAWING IS A CONTROLLED DOCUMENT.		DWN 09DEC2003 MICHAEL S. FEHER	tyco Tyco Electronics Corporation Harrisburg, PA 17105-3608	
DIMENSIONS: mm [INCHES]		CHK 09DEC2003 KURT A. RANDOLPH	NAME KURT A. RANDOLPH	
TOLERANCES UNLESS OTHERWISE SPECIFIED: 0 PLC ± - 1 PLC ± - 2 PLC ± 0.25[.010] 3 PLC ± - 4 PLC ± - ANGLES ± -		APVD 09DEC2003 KURT A. RANDOLPH	PRODUCT SPEC 108-2012	
MATERIAL O82 PRE-MILLED BRASS		FINISH 0.002032[.000080] MIN TIN PLATE	APPLICATION SPEC 114-2046	WEIGHT -
		SIZE A2		CAGE CODE 00779
		DRAWING NO C=1742035		RESTRICTED TO -
		SCALE 10:1		SHEET 1 of 1
		CUSTOMER DRAWING		REV B