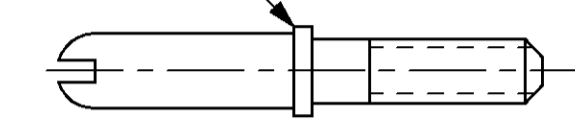
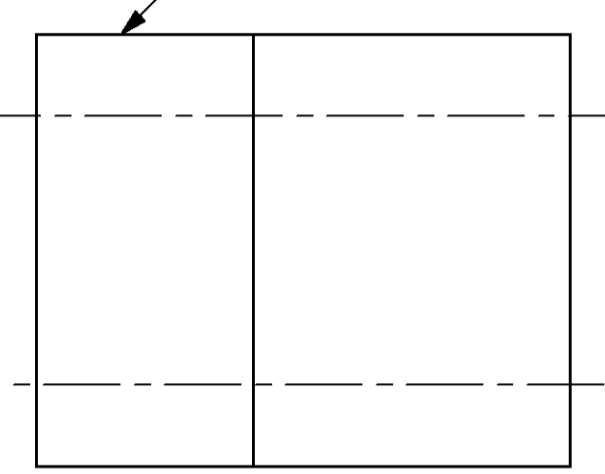


LOC		DIST		REVISIONS			
P	LYR	DESCRIPTION	DATE	OWN	APVD		
AE		REDRAWN W/O CHANGE PER EC 0020-290-96	09 DEC 97	-	-		

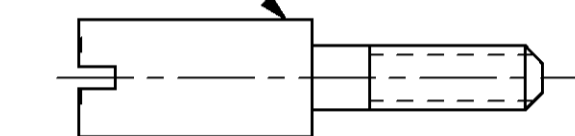
GUIDE PIN, QTY: 2
MATERIAL: STAINLESS STEEL



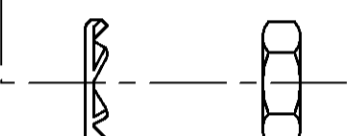
MALE BLOCK, QTY: 1
PHENOLIC, BLACK
34 POSITION



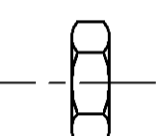
GUIDE SOCKET, QTY: 2
MATERIAL: STAINLESS STEEL



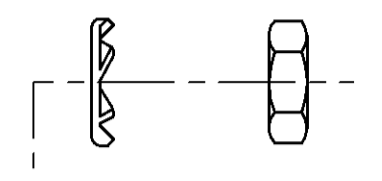
LOCK WASHER, QTY: 4
MATERIAL: STAINLESS STEEL
FINISH: PASSIVATED



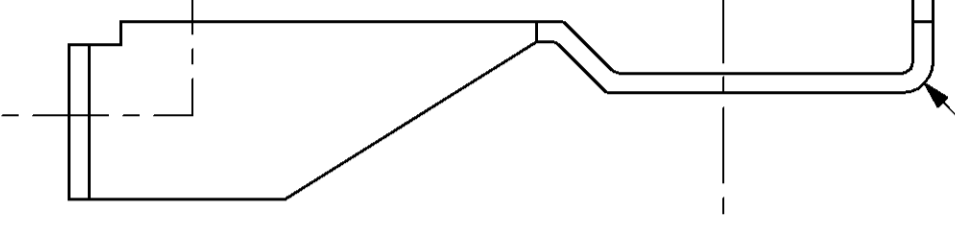
4-40 HEX NUT, QTY: 4
MATERIAL: CARBON STEEL
FINISH: ZINC PLATED



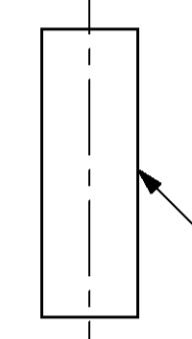
U BOLT, QTY: 1
MATERIAL: STAINLESS STEEL
FINISH: PASSIVATED



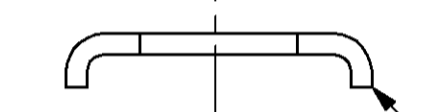
BRACKET, QTY: 1
MATERIAL: STAINLESS STEEL



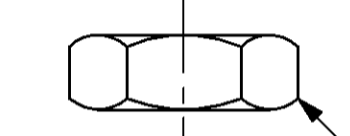
PROTECTIVE SLEEVE, QTY: 2
MATERIAL: POLYVINYL CHLORIDE



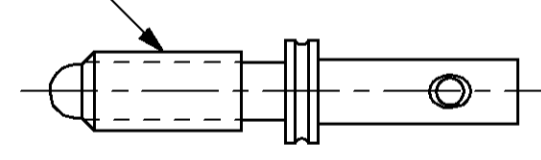
WIRE GUIDE, QTY: 1
MATERIAL: CARBON STEEL
FINISH: 5.08µm [.000200] MIN NICKEL



8-32 HEX NUT, QTY: 2
MATERIAL: CARBON STEEL
FINISH: ZINC PLATED



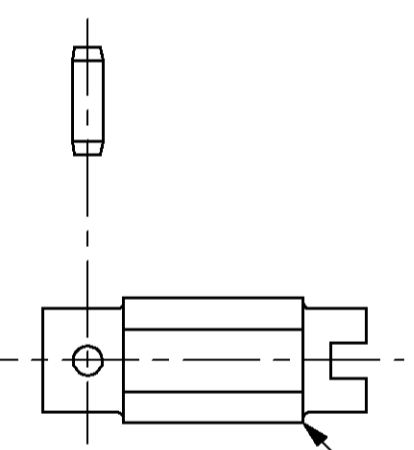
MALE JACKSCREW TIP, QTY: 1
MATERIAL: STAINLESS STEEL



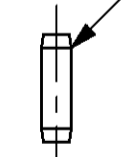
FLAT WASHER, QTY: 2
MATERIAL: STAINLESS STEEL
FINISH: PASSIVATED



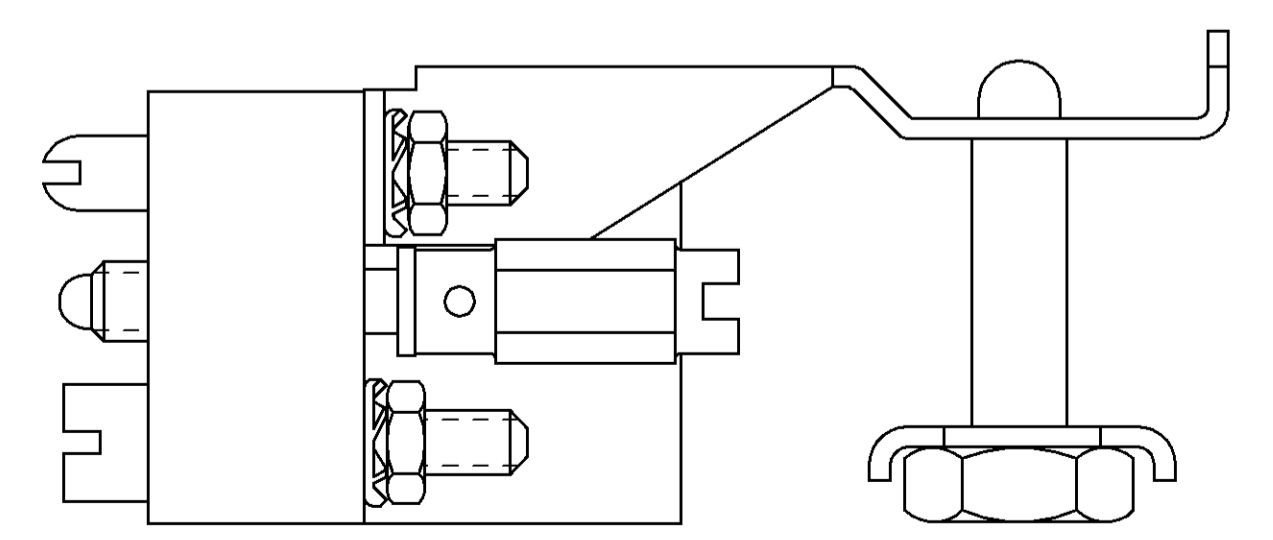
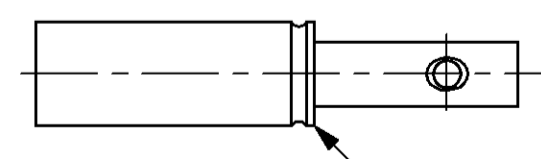
JACKSCREW BODY, QTY: 2
MATERIAL: DIE CAST ZINC
FINISH: ZINC PLATED



SPIROL PIN, QTY: 2
MATERIAL: STAINLESS STEEL
FINISH: PASSIVATED



FEMALE JACKSCREW TIP, QTY: 1
MATERIAL: STAINLESS STEEL



ASSEMBLED CONNECTOR KIT

9-203439-9
PART NUMBER

THIS DRAWING IS A CONTROLLED DOCUMENT.		DWN S. CARBO	09 DEC 97	AMP AMP Incorporated Harrisburg, PA 17105-3608
		CHK R. STONE	23 OCT 97	
DIMENSIONS: mm (INCHES)		TOLERANCES UNLESS OTHERWISE SPECIFIED:		APVD G. STEINHAUER
0 PLC ±-		1 PLC ±-		NAME
2 PLC ±0.25 (.010)		3 PLC ±-		PRODUCT SPEC
4 PLC ±-		ANGLES ±-		APPLICATION SPEC
MATERIAL SEE CALLOUTS		FINISH SEE CALLOUTS		SIZE CASE CODE DRAWING NO
		WEIGHT		A1 00779 203439
		CUSTOMER DRAWING		RESTRICTED TO
		SCALE 3:1		SHEET 1 OF 1
				REV AE