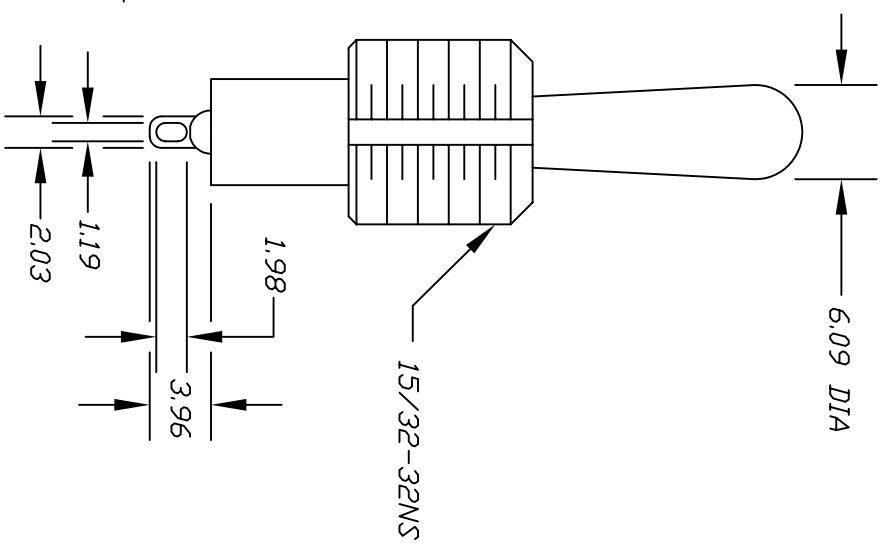
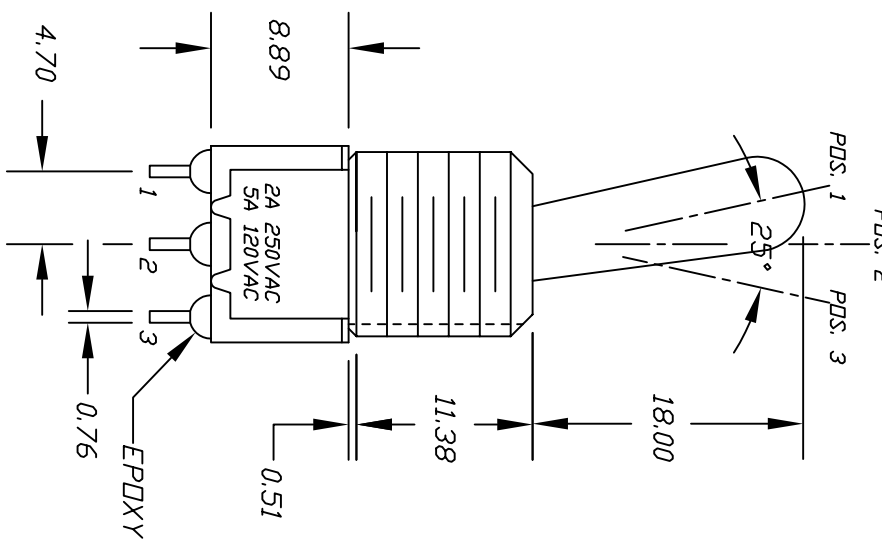
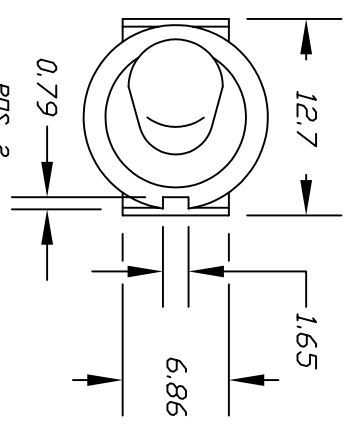


CONTACT CONFIGURATION

| SWITCH FUNCTION |        |        |
|-----------------|--------|--------|
| POS. 1          | POS. 2 | POS. 3 |
| DN              | NONE   | DN     |
| 2-3             | OPEN   | 2-1    |

NOTES:

- ALL DIMENSIONS IN MM [INCH]
- TERMINAL NUMBERS FOR REDF ONLY
- PLATING MATERIAL: SILVER
- RATING: 5A @ 120VAC DR 28VDC  
2A @ 250VAC
- ELECTRIC LIFE: 40,000 MAKE-AND-BREAK CYCLES AT FULL LOAD
- INSULATION RESISTANCE: 1,000 MEGA-OHM MIN.
- DIELECTRIC STRENGTH: 1,000 VRMS @ SEA LEVEL
- OPERATING TEMP: -30°C TO 85°C
- ▲ DENOTES CRITICAL PARAMETER
- 2002/95/EC (ROHS) COMPLIANT
- HARDWARE TO BE SUPPLIED BULK:  
T100012-LOCK WASHER QTY-1  
T100003-LOCK RING QTY-1  
T100004-HEX NUT QTY-2



| REV. | ECN NO. | DESCRIPTION             | DATE     | CHKD |
|------|---------|-------------------------|----------|------|
| B    | 16549   | FIXED HARDWARE LIST.    | 10/19/06 | TN   |
| A    | 15511   | RELEASED FOR PRODUCTION | 11/8/05  | PH   |

THE INFORMATION CONTAINED IN THIS DOCUMENT IS PROPRIETARY TO E-SWITCH AND IS NOT TO BE COPIED OR TRANSFERRED

TOLERANCES

|      |       |
|------|-------|
| 0.0  | ±0.4  |
| 0.00 | ±0.25 |

TITLE: 100 SP1 T8 B13 M1 Q EH

SCALE: 2:1

DATE: 11/8/05

DR: PH

DWG: ST111027

REV: B