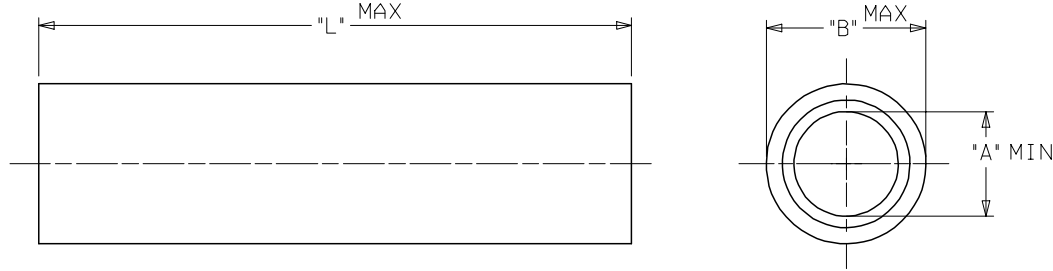


MATERIAL NUMBER	ENGINEERING NUMBER	WIRE RANGE	"L" MAX	"A" MIN	"B" MAX	MATERIAL	MATERIAL THICKNESS	TEMPERATURE RATING
192030165	A-T-302	22-18 (0.3-1.0mm ²)	.330 / (8.4)	.060 / (1.5)	.130 / (3.3)	COPPER	.032 / (0.8)	650F (342C)
192030172	B-T-304	16-14 (1.2-2.0mm ²)	.330 / (8.4)	.091 / (2.3)	.160 / (4.1)	COPPER	.032 / (0.8)	650F (342C)
192030169	C-T-303	12-10 (3.0-6.0mm ²)	.330 / (8.4)	.130 / (3.3)	.225 / (5.7)	COPPER	.040 / (1.0)	650F (342C)



NOTES:
 1. PLATING: ELECTRO-NICKEL.
 2. ALL DIMENSIONS IN INCHES/(MM).
 3. RoHS COMPLIANT

RELEASE FOR PROD EC NO: ETC2007-0146 DRW: JLOMASTRO 2006/10/11 CHKD: JMACNEIL 2006/10/11 APPR: JMACNEIL 2006/10/12	QUALITY SYMBOLS ▽=0 ▽=0	GENERAL TOLERANCES (UNLESS SPECIFIED)		DIMENSION STYLE	SCALE	DESIGN UNITS	THIRD ANGLE PROJECTION		
		mm	INCH	IN/MM	INCH				
		4 PLACES	± ---	± ---	DRAWN BY	DATE	TITLE	PARALLEL SPLICE VERSAKRIMP TEMP TERMS	
		3 PLACES	± ---	± .010	JLOMASTRO	10/02/06			
2 PLACES	± 0.25	± .01	CHECKED BY	DATE		MOLEX INCORPORATED			
1 PLACE	± 0.3	± ---	JMACNEIL	10/02/06					
ANGULAR ±1/2°		APPROVED BY		DATE					
		RDEROSS		10/04/06					
DRAFT WHERE APPLICABLE MUST REMAIN WITHIN DIMENSIONS		MATERIAL NO.		SEE CHART	DOCUMENT NO.	SD-19203-042			
		SIZE		THIS DRAWING CONTAINS INFORMATION THAT IS PROPRIETARY TO MOLEX INCORPORATED AND SHOULD NOT BE USED WITHOUT WRITTEN PERMISSION					
		B							