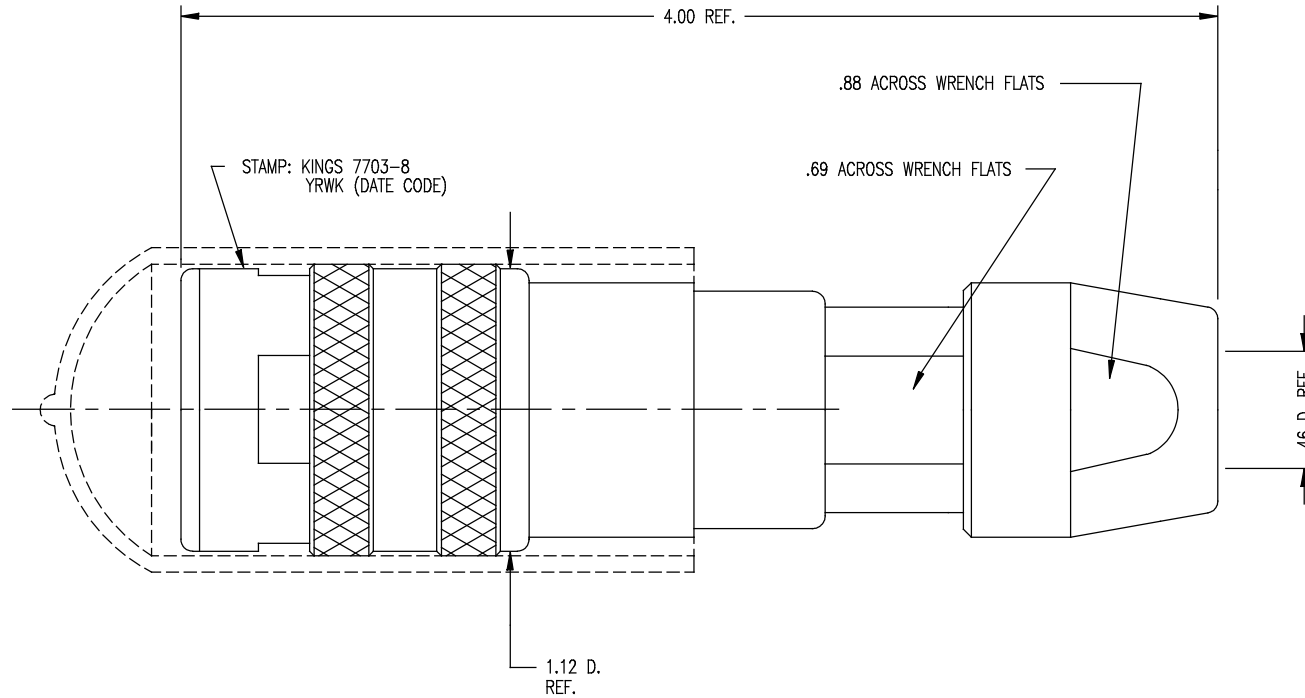


DASH NO.	M CODE	MADE FROM
----------	--------	-----------

GSD

REVISIONS	
ISSUE	CHANGES
0	ER 36987 KH 05/30/96
1	CN 37012 E KH 06/18/96
2	CN 37238 D KH 02/03/97
3	CN 38154 C BDH 12/14/00

7703-8



NOTES:

- FOR USE WITH BELDEN 1859A (79 CABLE GROUP).
- FOR CABLING INSTRUCTIONS SEE KAI-8011.
- FOR CRIMPING USE DIE SIZE 2040.
- MATERIALS:  
 INSULATORS-TEFLON, ASTM-D-4894  
 GASKETS-SILICONE RUBBER, ZZ-R-765  
 CAP-VINYL  
 K-GRIP SLEEVE-COMMERCIAL BRONZE, ASTM-B-135  
 CENTER CONTACT }  
 OUTER CONTACT SPRING } BER. COP., ASTM-B-196  
 INSERT }  
 ALL OTHER METAL PARTS-BRASS, ASTM-B16

- FINISHES:  
 CENTER CONTACT }  
 OUTER CONTACT SPRING } GOLD PLATE PER MIL-G-45204  
 NUTS }  
 COLLET } KINGS TARNISH RESISTANT NICKEL FINISH (TR-5)  
 BODIES }  
 ALL OTHER METAL PARTS-SILVER PLATE PER QQ-S-365
- ELECTRICAL CHARACTERISTICS:  
 NOMINAL IMPEDANCE: 75 OHMS  
 FREQUENCY RANGE: DC-500 MHZ  
 VOLTAGE BREAKDOWN: CENTER CONDUCTOR/INNER GROUND: 1500 VRMS  
 INNER GROUND/OUTER GROUND: 500 VRMS

KAM6627

SCALE 2:1	
APPROX SURFACE AREA	
WAS: E-19362	
USED ON	
REF:	
JK, TRI-LOC, SERIAL DIGITAL	
DRAWN KH	DATE 05/30/96
DESIGN DW	DATE 05/31/96
APPR.	DATE

GSD

**KINGS**  
ELECTRONICS CO., INC.  
ROCK HILL, SOUTH CAROLINA 29730

7703-8