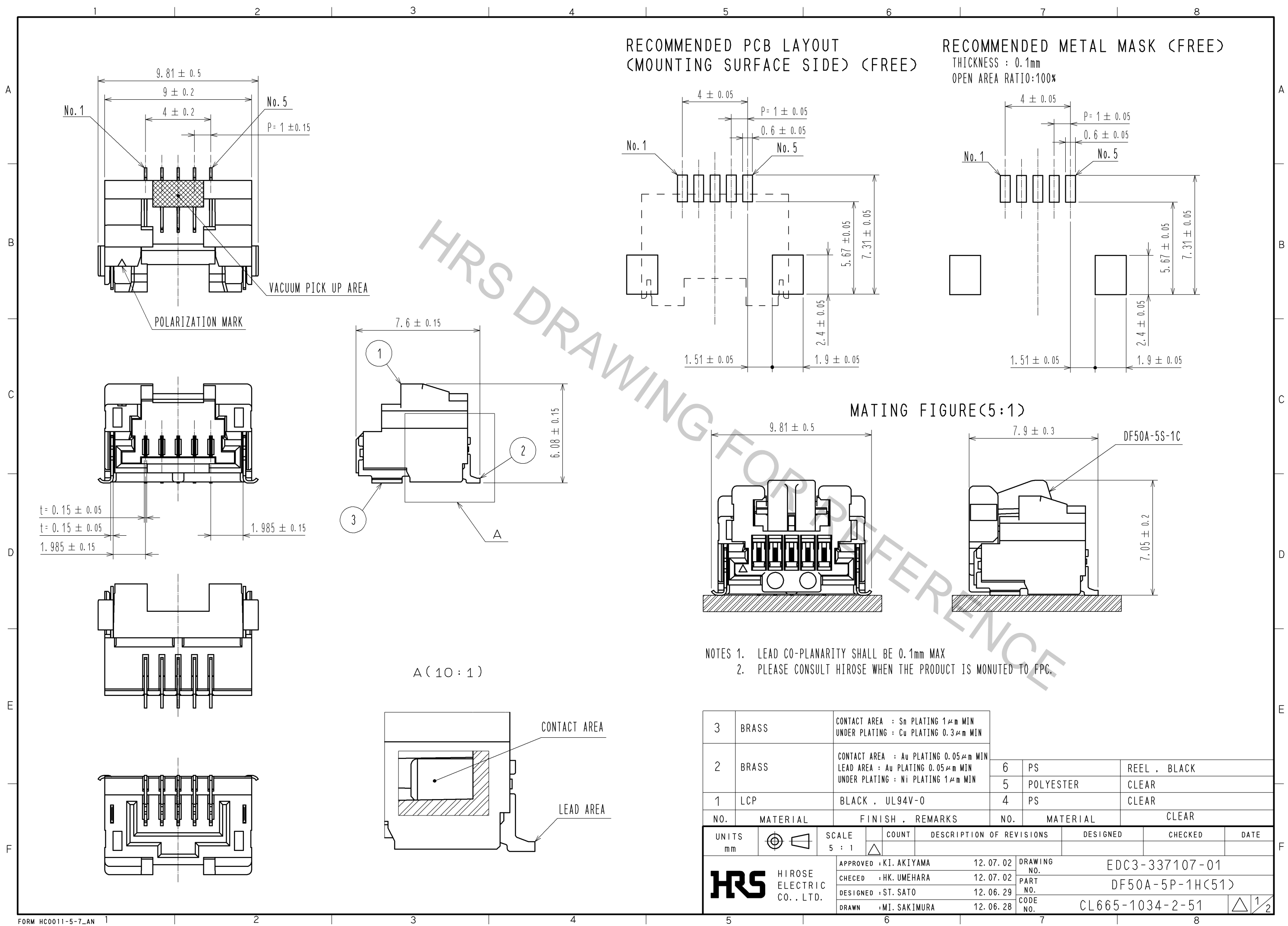


Apr.1.2017 Copyright 2017 HIROSE ELECTRIC CO., LTD. All Rights Reserved.



RECOMMENDED PCB LAYOUT
(MOUNTING SURFACE SIDE) (FREE)

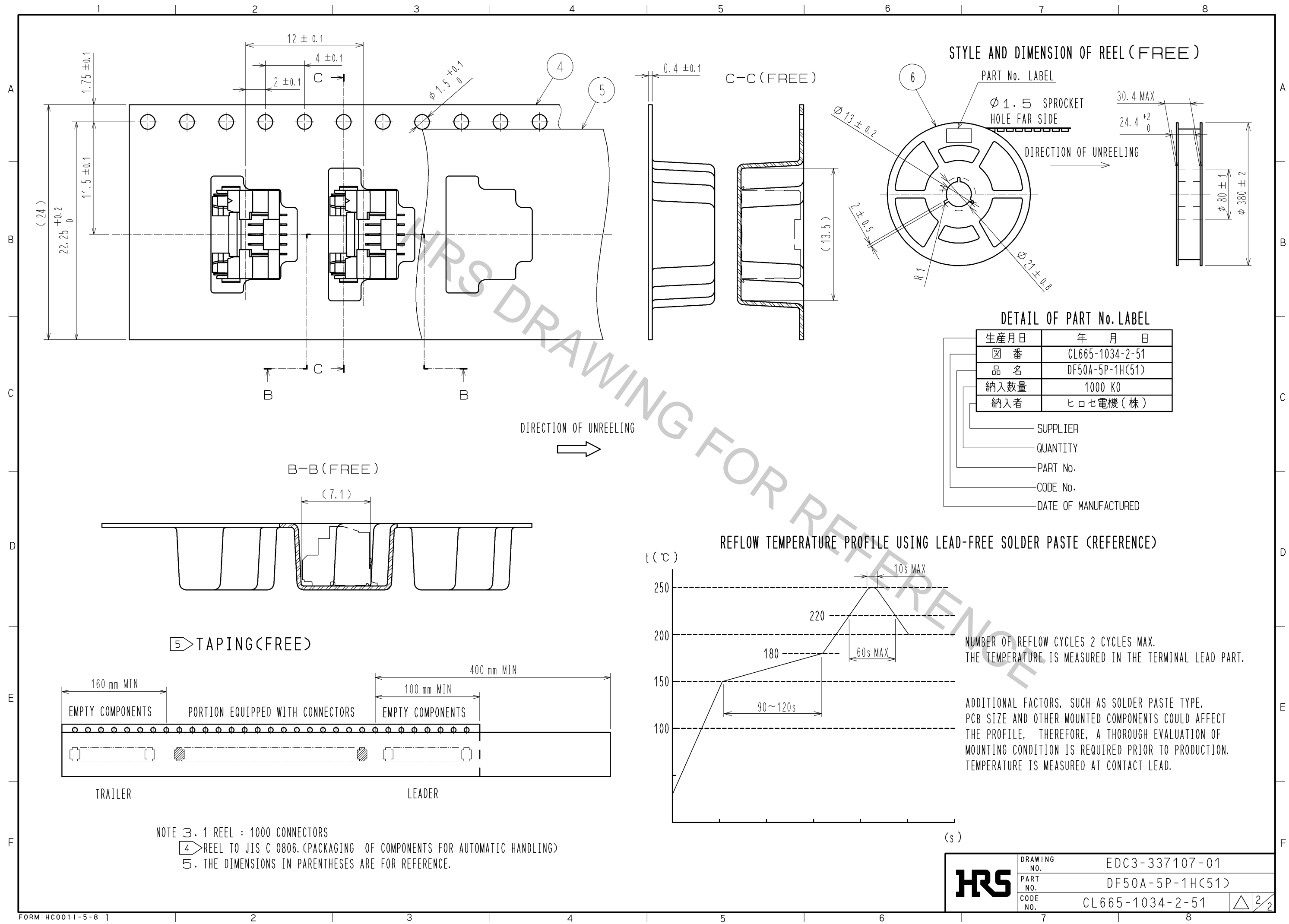
RECOMMENDED METAL MASK (FREE)
THICKNESS : 0.1mm
OPEN AREA RATIO:100%

MATING FIGURE(5:1)

- NOTES 1. LEAD CO-PLANARITY SHALL BE 0.1mm MAX
2. PLEASE CONSULT HIROSE WHEN THE PRODUCT IS MONUTED TO FPC.

| | | | | | |
|-----|----------|---|-----|-----------|--------------|
| 3 | BRASS | CONTACT AREA : Sn PLATING 1μm MIN UNDER PLATING : Cu PLATING 0.3μm MIN | 6 | PS | REEL , BLACK |
| 2 | BRASS | CONTACT AREA : Au PLATING 0.05μm MIN LEAD AREA : Au PLATING 0.05μm MIN UNDER PLATING : Ni PLATING 1μm MIN | 5 | POLYESTER | CLEAR |
| 1 | LCP | BLACK , UL94V-0 | 4 | PS | CLEAR |
| NO. | MATERIAL | FINISH , REMARKS | NO. | MATERIAL | CLEAR |

| | | | | | | | |
|--------------------------------------|--|------------------------|------------|--------------------------|-----------------|---------|------|
| UNITS mm | | SCALE 5 : 1 | COUNT △ | DESCRIPTION OF REVISIONS | DESIGNED | CHECKED | DATE |
| HRS HIROSE ELECTRIC CO., LTD. | | APPROVED : KI. AKIYAMA | 12.07.02 | DRAWING NO. | EDC3-337107-01 | | |
| | | CHECED : HK. UMEHARA | 12.07.02 | PART NO. | DF50A-5P-1H(51) | | |
| | | DESIGNED : ST. SATO | 12.06.29 | CODE NO. | CL665-1034-2-51 | | |
| | | DRAWN : MI. SAKIMURA | 12.06.28 | | △ 1/2 | | |



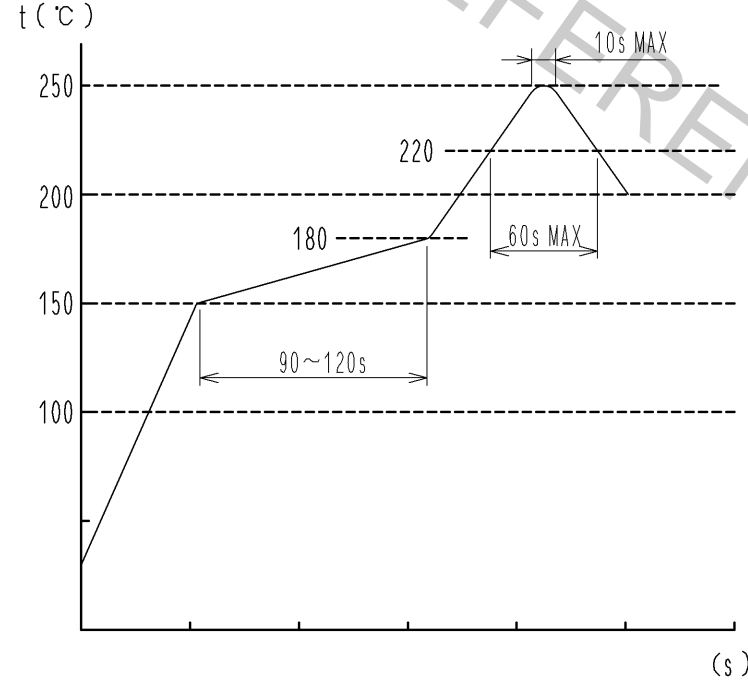
STYLE AND DIMENSION OF REEL (FREE)

DETAIL OF PART No. LABEL

| | |
|------|-----------------|
| 生産月日 | 年 月 日 |
| 図 番 | CL665-1034-2-51 |
| 品 名 | DF50A-5P-1H(51) |
| 納入数量 | 1000 KO |
| 納入者 | ヒロセ電機(株) |

- SUPPLIER
- QUANTITY
- PART No.
- CODE No.
- DATE OF MANUFACTURED

REFLOW TEMPERATURE PROFILE USING LEAD-FREE SOLDER PASTE (REFERENCE)



NUMBER OF REFLOW CYCLES 2 CYCLES MAX.
THE TEMPERATURE IS MEASURED IN THE TERMINAL LEAD PART.

ADDITIONAL FACTORS, SUCH AS SOLDER PASTE TYPE, PCB SIZE AND OTHER MOUNTED COMPONENTS COULD AFFECT THE PROFILE. THEREFORE, A THOROUGH EVALUATION OF MOUNTING CONDITION IS REQUIRED PRIOR TO PRODUCTION. TEMPERATURE IS MEASURED AT CONTACT LEAD.

NOTE 3. 1 REEL : 1000 CONNECTORS
 4 REEL TO JIS C 0806. (PACKAGING OF COMPONENTS FOR AUTOMATIC HANDLING)
 5. THE DIMENSIONS IN PARENTHESES ARE FOR REFERENCE.

| | | |
|------------|-------------|-----------------|
| HRS | DRAWING NO. | EDC3-337107-01 |
| | PART NO. | DF50A-5P-1H(51) |
| | CODE NO. | CL665-1034-2-51 |
| | | △ 2/2 |