

## Surge protection plug - PT 2-TELE-ST - 2838733


Please be informed that the data shown in this PDF Document is generated from our Online Catalog. Please find the complete data in the user's documentation. Our General Terms of Use for Downloads are valid (<http://phoenixcontact.com/download>)



Surge protection plug for base element, for protecting a double conductor of analog telecommunication interfaces.



### Key Commercial Data

Packing unit	10 STK
GTIN	 4 046356 044677
GTIN	4046356044677

### Technical data

#### Dimensions

Height	45 mm
Width	17.7 mm
Depth	52 mm
Horizontal pitch	1 Div.
Complete module height	90 mm
Complete module width	17.7 mm
Complete module depth	65.5 mm

#### Ambient conditions

Ambient temperature (operation)	-40 °C ... 85 °C
Ambient temperature (storage/transport)	-40 °C ... 85 °C
Degree of protection	IP20

#### General

Housing material	PA 6.6
Flammability rating according to UL 94	V-0
Color	jet black RAL 9005
Mounting type	on base element

# Surge protection plug - PT 2-TELE-ST - 2838733

## Technical data

### General

Type	Male
Number of positions	2
Direction of action	Line-Line & Line-Earth Ground

### Protective circuit

IEC test classification	B2
	C1
	C2
	C3
	D1
Nominal voltage $U_N$	185 V DC
	130 V AC
Maximum continuous voltage $U_C$	185 V DC
	130 V AC
Rated current	450 mA AC (45°C)
	130 mA DC (45°C)
Operating effective current $I_C$ at $U_C$	$\leq 10 \mu A$
Residual current $I_{PE}$	$\leq 10 \mu A$
Nominal discharge current $I_n$ (8/20) $\mu s$ (line-line)	10 kA
Nominal discharge current $I_n$ (8/20) $\mu s$ (line-earth)	10 kA
Pulse discharge current $I_{imp}$ (10/350) $\mu s$ (line-line)	1 kA
Pulse discharge current $I_{imp}$ (10/350) $\mu s$ (line-earth)	1 kA
Total discharge current $I_{total}$ (8/20) $\mu s$	18 kA
Max. discharge current $I_{max}$ (8/20) $\mu s$ maximum (line-earth)	18 kA
Nominal pulse current $I_{an}$ (10/700) $\mu s$ (line-line)	100 A
Nominal pulse current $I_{an}$ (10/700) $\mu s$ (line-earth)	100 A
Output voltage limitation at 1 kV/ $\mu s$ (line-line) spike	$\leq 300 V$
Output voltage limitation at 1 kV/ $\mu s$ (line-earth) spike	$\leq 300 V$
Output voltage limitation at 1 kV/ $\mu s$ (line-line) static	$\leq 300 V$
Output voltage limitation at 1 kV/ $\mu s$ (line-earth) static	$\leq 300 V$
Residual voltage at $I_n$ (line-line)	$\leq 160 V$ (C2 - 10 kV / 5 kA)
Residual voltage at $I_n$ (line-earth)	$\leq 200 V$ (C2 - 10 kV / 5 kA)
Voltage protection level $U_p$ (line-line)	$\leq 250 V$ (B2 - 1 kV / 25 A)
	$\leq 300 V$ (B2 - 4 kV / 100 A)
	$\leq 270 V$ (C1 - 1 kV/500 A)
	$\leq 300 V$ (C2 - 2 kV/1 kA)
	$\leq 320 V$ (C2 - 4 kV / 2 kA)
	$\leq 330 V$ (C2 - 10 kV / 5 kA)
Voltage protection level $U_p$ (line-earth)	$\leq 250 V$ (B2 - 1 kV / 25 A)
	$\leq 300 V$ (B2 - 4 kV / 100 A)

## Surge protection plug - PT 2-TELE-ST - 2838733

### Technical data

#### Protective circuit

	≤ 270 V (C1 - 1 kV/500 A)
	≤ 300 V (C2 - 2 kV/1 kA)
	≤ 320 V (C2 - 4 kV / 2 kA)
	≤ 330 V (C2 - 10 kV / 5 kA)
Response time $t_A$ (line-line)	≤ 500 ns
Response time $t_A$ (line-earth)	≤ 500 ns
Input attenuation aE, sym.	typ. 0.4 dB (≤ 5 MHz / 100 Ω)
Cut-off frequency $f_g$ (3 dB), sym. in 100 Ohm system	typ. 20 MHz
Capacity (line-line)	typ. 30 pF (f=1 MHz / $V_R=0$ V)
Capacity (line-earth)	typ. 30 pF (f=1 MHz / $V_R=0$ V)
Surge protection fault message	none
Impulse durability (line-line)	B2 - 4 kV/100 A
	C1 - 1 kV/500 A
	C2 - 10 kV/5 kA
	C3 - 25 A
	D1 - 1 kA
Impulse durability (line-earth)	B2 - 4 kV/100 A
	C1 - 1 kV/500 A
	C2 - 10 kV/5 kA
	C3 - 25 A
	D1 - 1 kA

#### Connection data

Connection method	pluggable
-------------------	-----------

#### Standards and Regulations

Standards/specifications	IEC 61643-21 2000
	EN 61643-21 2002

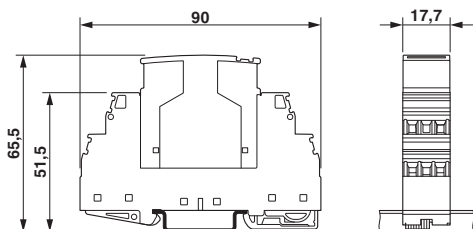
#### Environmental Product Compliance

China RoHS	Environmentally friendly use period: unlimited = EFUP-e
	No hazardous substances above threshold values

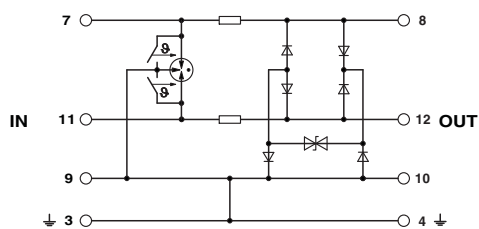
### Drawings

# Surge protection plug - PT 2-TELE-ST - 2838733

Dimensional drawing



Circuit diagram



The figure shows the complete module consisting of a base element and connector

## Approvals

Approvals

Approvals

EAC

Ex Approvals

## Approval details

EAC		RU C- DE.A*30.B01561
-----	--	-------------------------

Phoenix Contact 2018 © - all rights reserved  
<http://www.phoenixcontact.com>

PHOENIX CONTACT GmbH & Co. KG  
Flachsmarktstr. 8  
32825 Blomberg  
Germany  
Tel. +49 5235 300  
Fax +49 5235 3 41200  
<http://www.phoenixcontact.com>