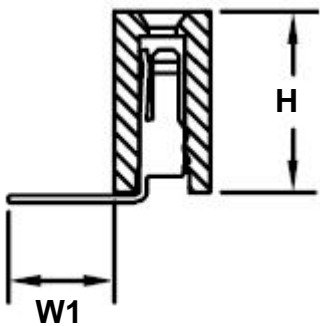
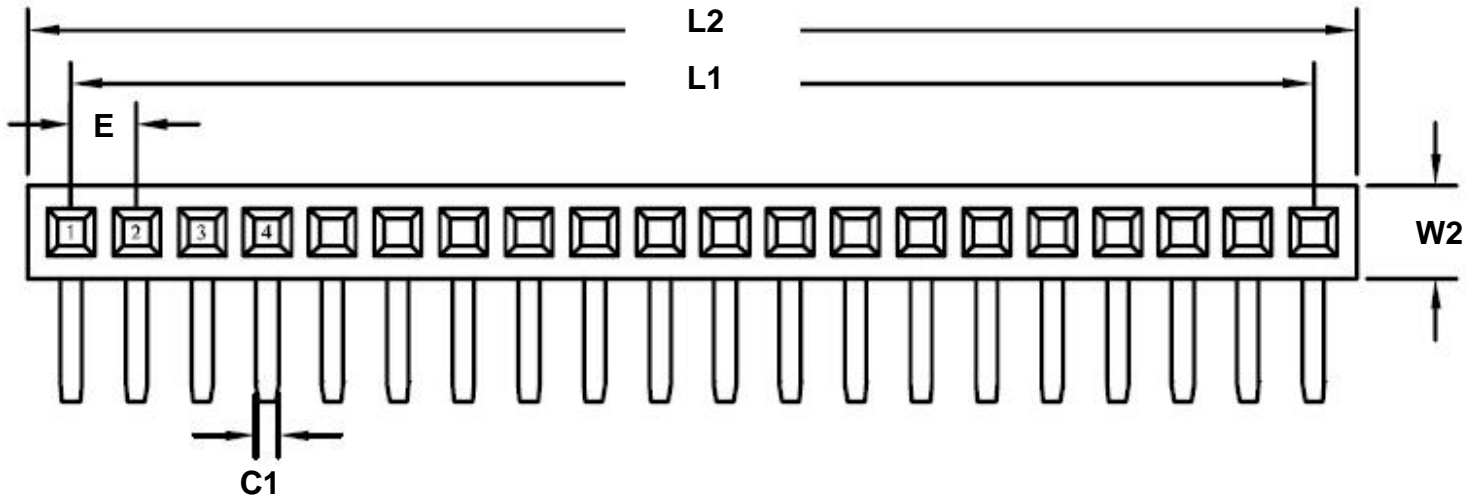


1.27 mm 40 pin Right Angle Female Header Through Hole Gold

REF.	DIMENSIONS					
	mm			inches		
	MIN.	TYP.	MAX.	MIN.	TYP.	MAX.
C		0.70				
C1		0.42				
E		1.27			0.050	
H		3.40				
L1		49.53			1.950	
L2		51.20			2.016	
W1		2.40				
W2		1.80				



Recommended PCB Hole Layout

