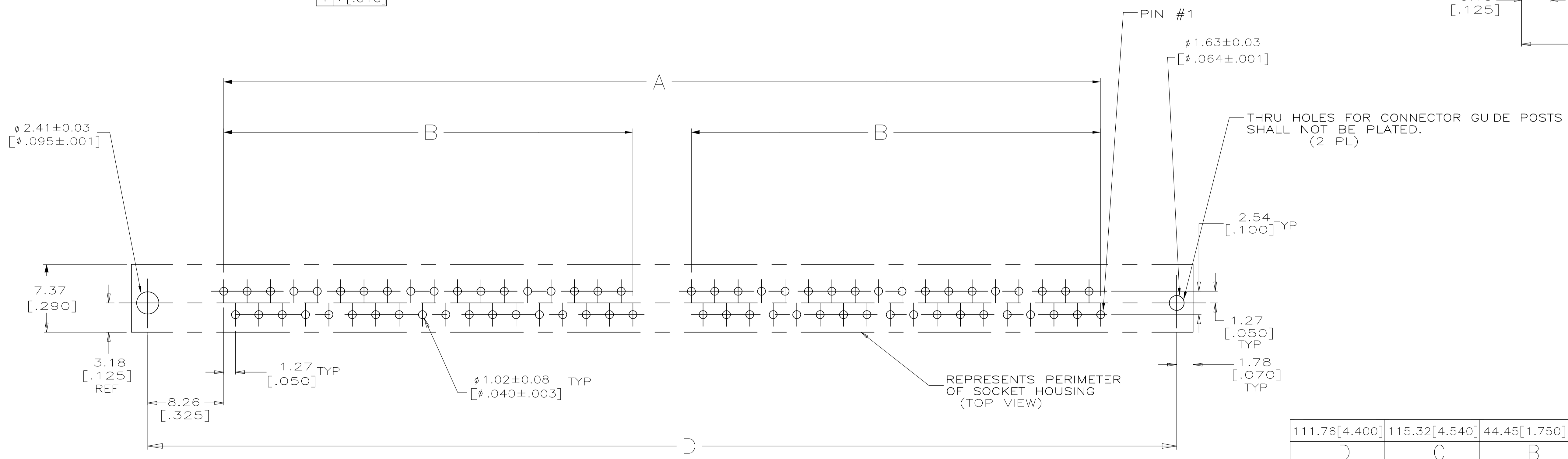
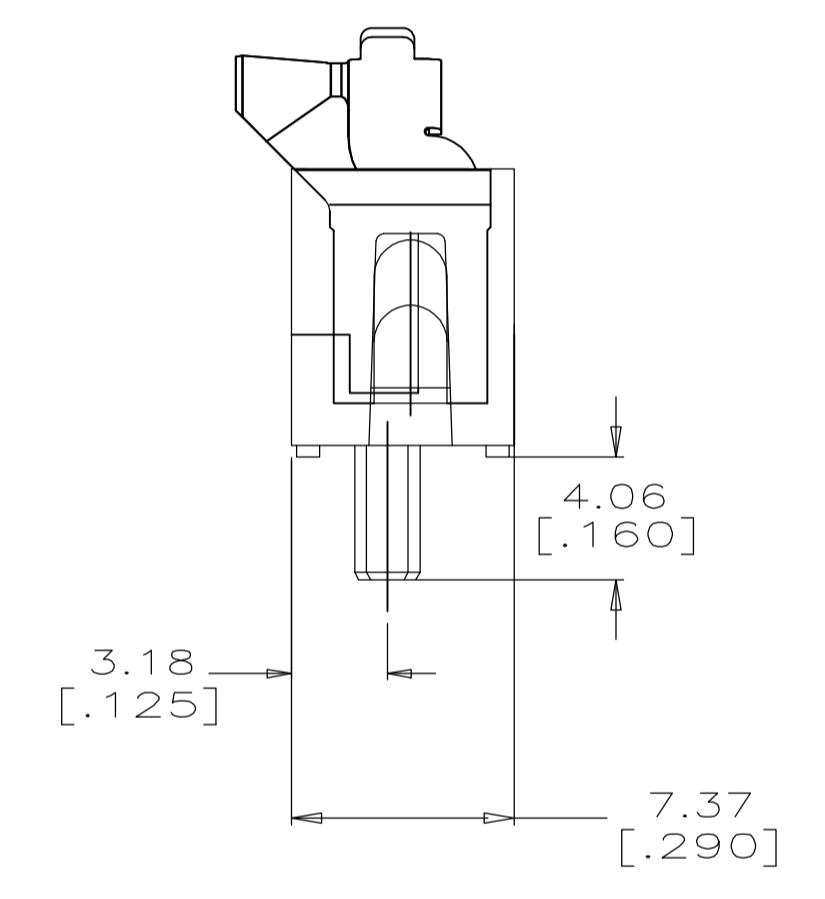
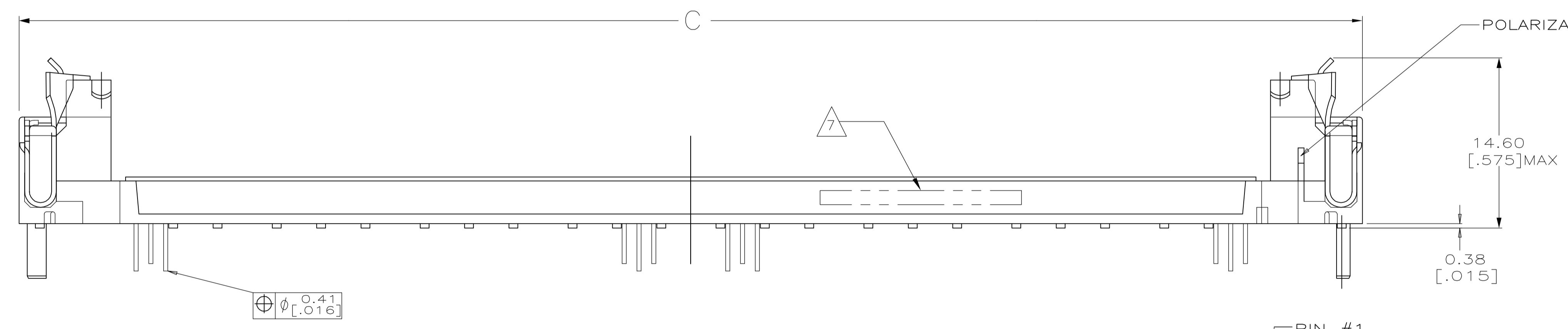
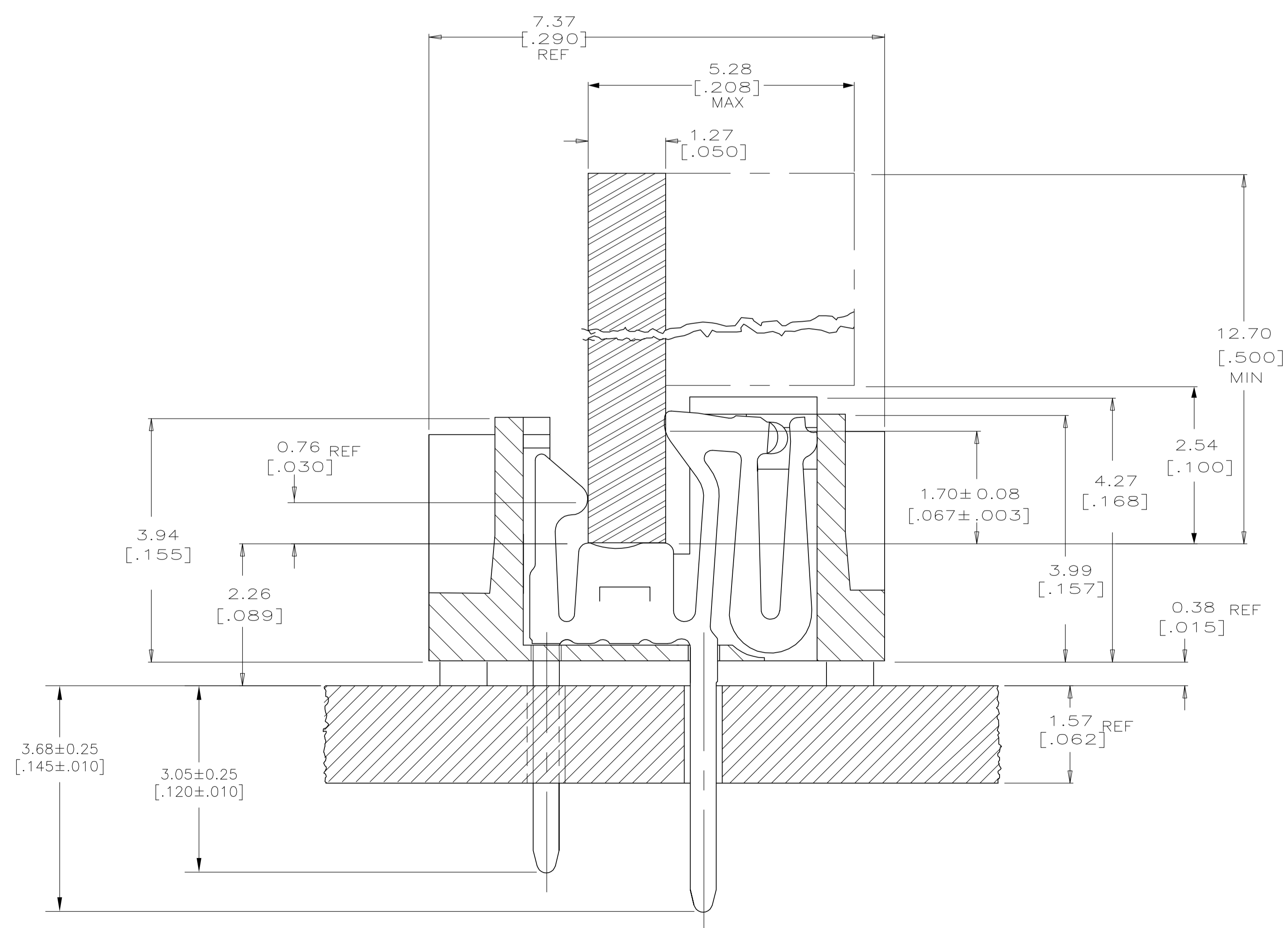
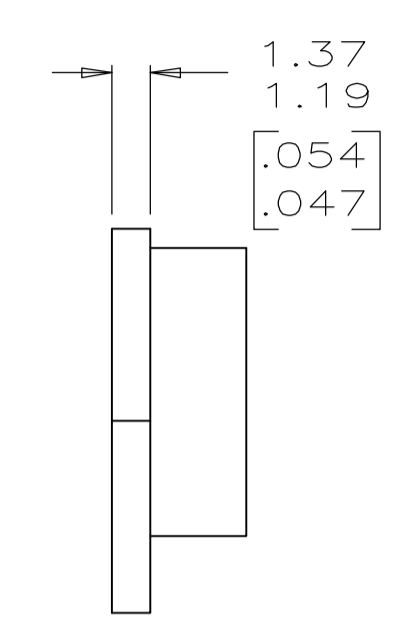
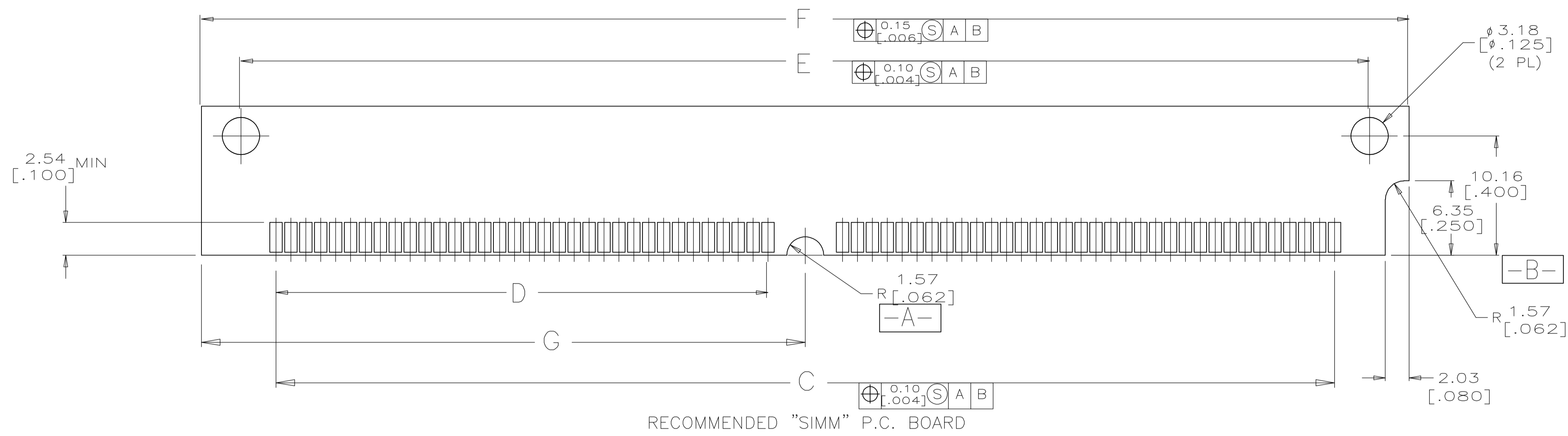


- ① HOUSING-MATERIAL: LIQUID-CRYSTAL-POLYMER.
- ② CONTACT-MATERIAL: PHOS. BRONZE, AMP 100-255.
- ③ LATCH-MATERIAL: BRASS, AMP 100-86 NICKEL PLATE 0.00127[.000050] MIN PER AMP SPEC 112-25-1.
- ④ CONTACT-PLATE: 0.00508[.000200] MIN MATTE TIN OVER 0.00127[.000050]MIN NICKEL.
- 5. IN ADDITION TO THOSE RECOMMENDED "SIMM" P. C. BOARD DIMENSIONS AND TOLERANCES SHOWN, ALL JEDEC SPECIFICATIONS APPLY AS SHOWN ON MO-116, ISSUE A.
- 6. RECOMMENDED MATING S.I.M.M. TAB METALLURGY: BASE METAL-COPPER. PLATING TO BE 0.00762[.000300] MIN TIN/LEAD OVER 0.00127[.000050] MIN NICKEL.
- ⑦ DATE CODE: (YEAR WEEK) XXXX FORMAT, LOCATED APPROXIMATELY AS SHOWN ON OPPOSITE SIDE.



RECOMMENDED P.C. BOARD HOLE PATTERN SOCKET SIDE

|  |               |  |   |                   |           |
|--|---------------|--|---|-------------------|-----------|
| 111.76[4.400]                          | 115.32[4.540] | 44.45[1.750]                           | 95.25[3.750]  | 72                | 5822019-4 |
| D                                      | C             | B                                      | A   | NO. OF POS        | PART NO   |
| THIS DRAWING IS A CONTROLLED DOCUMENT. |               | DIN S. WAITMAN<br>GJK M.YFOMANS        | Tyco Electronics Corporation<br>Harrisburg, PA 17105-3608 |                   |           |
| DIMENSIONS: mm [INCHES]                |               | TOLERANCES UNLESS OTHERWISE SPECIFIED: |   | PRODUCT SPEC      |           |
| 0 PLC ± -                              |               | 1 PLC ± -                              |   | APPLICATION SPEC  |           |
| 2 PLC ± -                              |               | 3 PLC ± 0.13[.005]                     |   | SIZE              |           |
| 4 PLC ± -                              |               | ANGLES ± -                             |   | CAGE CODE         |           |
| MATERIAL                               |               | FINISH                                 |   | DRAWING NO        |           |
| ①②③                                    |               | ③④                                     |   | A1 00779C=5822019 |           |
| CUSTOMER DRAWING                       |               | SCALE 4:1                              |   | SHEET 1 OF 2      |           |



|                                |               |               |              |              |             |
|--------------------------------|---------------|---------------|--------------|--------------|-------------|
| 53.98[2.125]                   | 107.95[4.250] | 101.19[3.984] | 44.45[1.750] | 95.25[3.750] | 72          |
| G                              | F             | E             | D            | C            | NO. OF POSN |
| RECOMMENDED "SIMM" P.C. BOARDS |               |               |              |              |             |

|  |  |                     |              |   |
|--|--|---------------------|--------------|---|
| THIS DRAWING IS A CONTROLLED DOCUMENT. |  | DWG: S. WAITMAN     | DATE: SJANOS | <br>Tyco Electronics Corporation<br>Harrisburg, PA 17105-3608 |
| DIMENSIONS: mm [INCHES]                |  | CHK: M. YFOMANS     | DATE: SJANOS |   |
| TOLERANCES UNLESS OTHERWISE SPECIFIED: |  | APVD: -             |              | NAME: -   |
| 0 PLC ± -                              |  | PRODUCT SPEC: -     |              | PRODUCT SPEC: CONNECTOR, MICRO-EDGE, .050q                    |
| 1 PLC ± -                              |  | APPLICATION SPEC: - |              | APPLICATION SPEC: VERTICAL, TIN PLATE, METAL LATCH            |
| 2 PLC ± -                              |  | SIZE: -             |              | SIZE: -   |
| 3 PLC ± 0.13[0.005]                    |  | CAGE CODE: -        |              | CAGE CODE: -  |
| 4 PLC ± -                              |  | DRAWING NO: -       |              | DRAWING NO: A1 00779  |
| ANGLES: ± -                            |  | WEIGHT: -           |              | WEIGHT: -   |
| FINISH: -                              |  | CUSTOMER DRAWING: - |              | CUSTOMER DRAWING: -   |
| MATERIAL: SEE SHEET 1                  |  | SCALE: 4:1          |              | SCALE: 4:1  |
| FINISH: SEE SHEET 1                    |  | SHEET 2 OF 2        |              | SHEET 2 OF 2  |
| REV: -                                 |  | REV: B              |              | REV: B  |