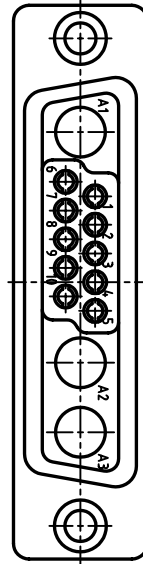
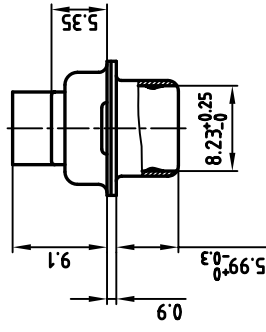
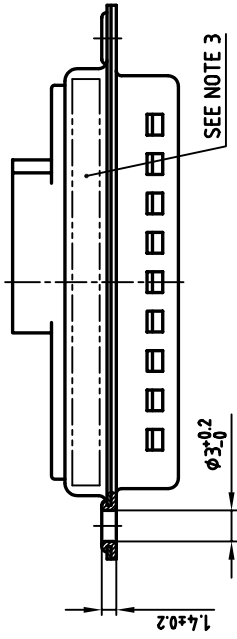
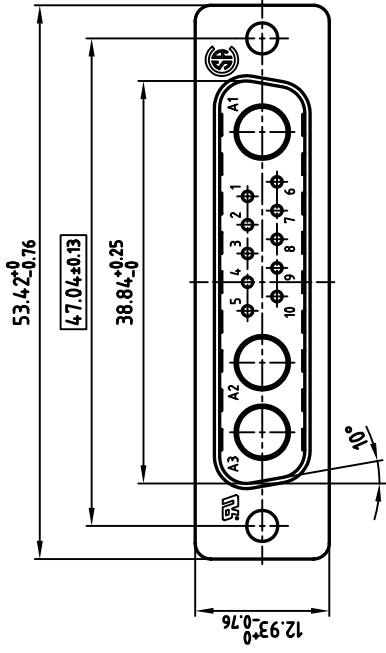


used for: D-SUB COMBINATION



NOTES:

1. METALSHELLS: STEEL; min. 320µ" TIN
2. INSULATORS: PBT GF UL 94 V-0, BLACK
3. CONNECTOR IS PART MARKED: 3013W3PXK99A10X CONEC Y/W/W
4. = CRITICAL DIMENSION



APPROVAL # FREIGABE # DEBLOCKAGE # AUTORIZACION # APPROVAL	
CUSTOMER APPROVAL DATE:	
NAME:	TITLE:
COMPANY NAME:	
APPROVAL # FREIGABE # DEBLOCKAGE # AUTORIZACION # APPROVAL	

THIS DRAWING MAY NOT BE COPIED OR REPRODUCED IN ANY WAY, AND MAY NOT BE PASSED ON TO A THIRD PARTY WITHOUT WRITTEN PERMISSION.
 OWNERSHIP AND COPYRIGHT OF CONEC GMBH DO NOT ALTER CAD DRAWING BY HAND

rev.	description	date	name

tolerance		scale: 2:1 (5:1)	
material:		SEE NOTES	
2002	date	name	title:
drawn	27.06.	Parel	D-SUB COMBINATION MALE 13W3P CRIMP STYLE
appd.	27.06.	E. Mickenbecker	
norm			
e-old			
dwg no:		AutoCAD 2000 DIN-A	
part no:		13K1A630 3	
part no:		3013W3PXK99A10X sh: 1/1	



used for: D-SUB COMBINATION