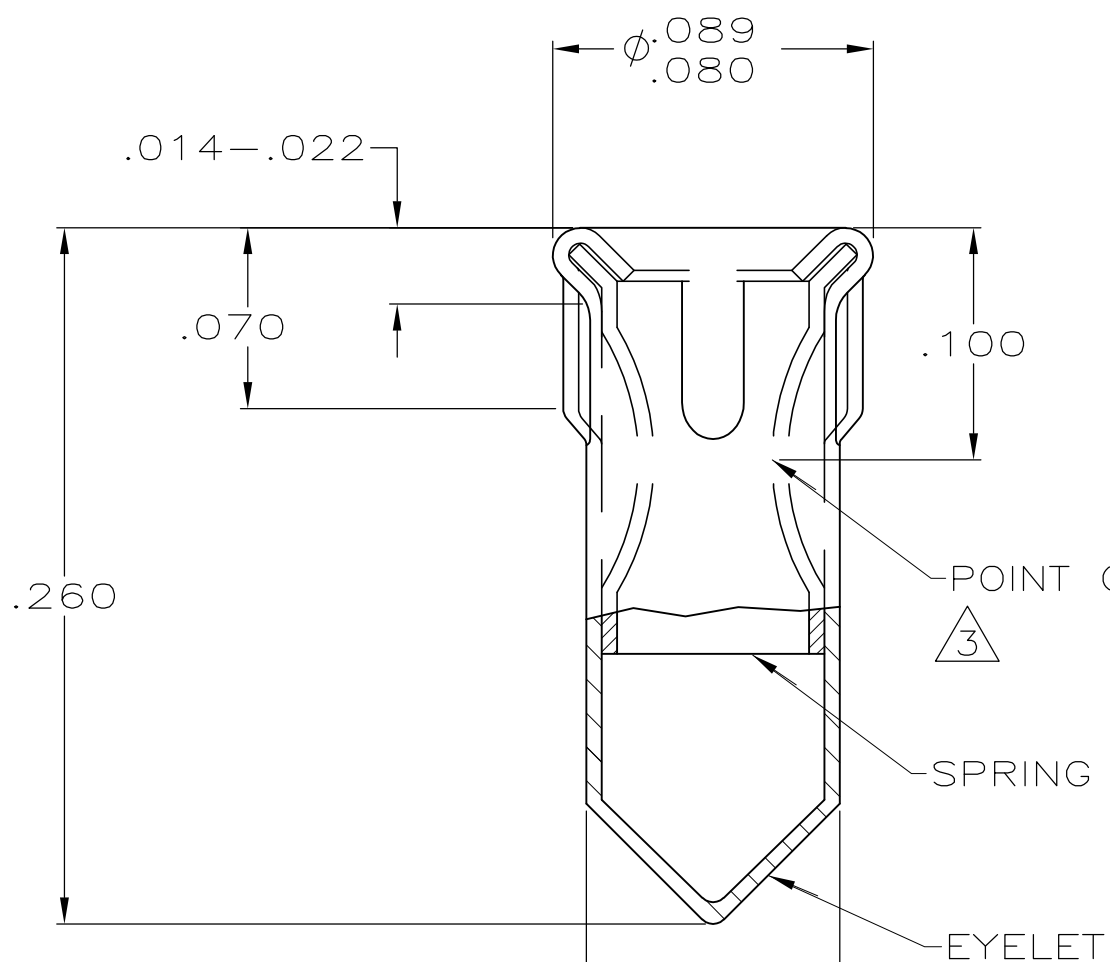
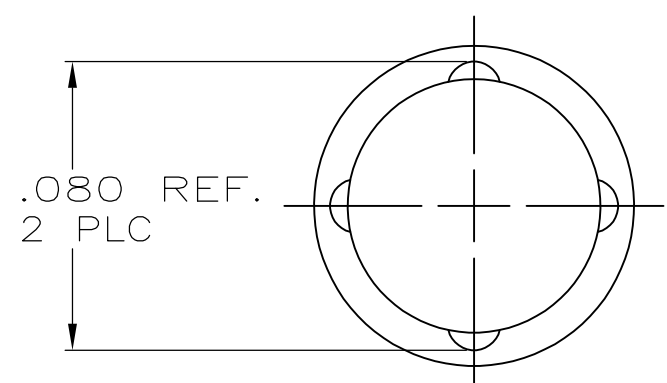


THIS DRAWING IS UNPUBLISHED. RELEASED FOR PUBLICATION
 © COPYRIGHT BY TYCO ELECTRONICS CORPORATION. ALL INTERNATIONAL RIGHTS RESERVED.

LOC	DIST	REVISIONS					
AG	53	P	LTR	DESCRIPTION	DATE	DWN	APVD
			E	REVISED PER ECO-09-026264	25MAR2010	HMR	DB



- MATERIAL: EYELET-COPPER (QQ-C-533)
SPRING-BERYLLIUM COPPER (QQ-C-576).
- TIN PL. .000150 MIN THK
- NICKEL UNDERPLATE ALL OVER, MATING SURFACE PLATED TO MEET PERFORMANCE REQUIREMENTS OF TYCO PRODUCT SPECIFICATION 108-14008.
- RECOMMENDED HOLE SIZE FOR MACHINE INSERTION .069-.075
- TIN PLATE .000100 MIN THK
- TIN-LEAD PLATE .000150 MIN THK



	.037-.041	.100-.210	3	6	645500-3
	.037-.041		NOTE 5		645500-2
OBSOLETE	.037-.041	.100-.210	NOTE 3	NOTE 2	645500-1
	DIA	LENGTH	SPRING	EYELET	PART NUMBER
	PIN		FINISH		

THIS DRAWING IS A CONTROLLED DOCUMENT.		DWN	24-JUN-99	Tyco Electronics Corporation	
		L.A. McEACHIN		Harrisburg, PA 17105-3608	
DIMENSIONS: INCHES		CHK	19-JUL-99	NAME	
		G.S. RIDGILL		SOCKET, MSS, SERIES 4	
TOLERANCES UNLESS OTHERWISE SPECIFIED:		APVD	19-JUL-99	PRODUCT SPEC	
0 PLC ± -		G.S. RIDGILL		APPLICATION SPEC	
1 PLC ± -				SIZE	CAGE CODE
2 PLC ± -				A3	00779
3 PLC ± .010				DRAWING NO	RESTRICTED TO
4 PLC ± -				C-645500	-
ANGLES ± -				SCALE	SHEET
MATERIAL -		FINISH		NTS	1 OF 1
SEE TABLE		CUSTOMER DRAWING		REV	E