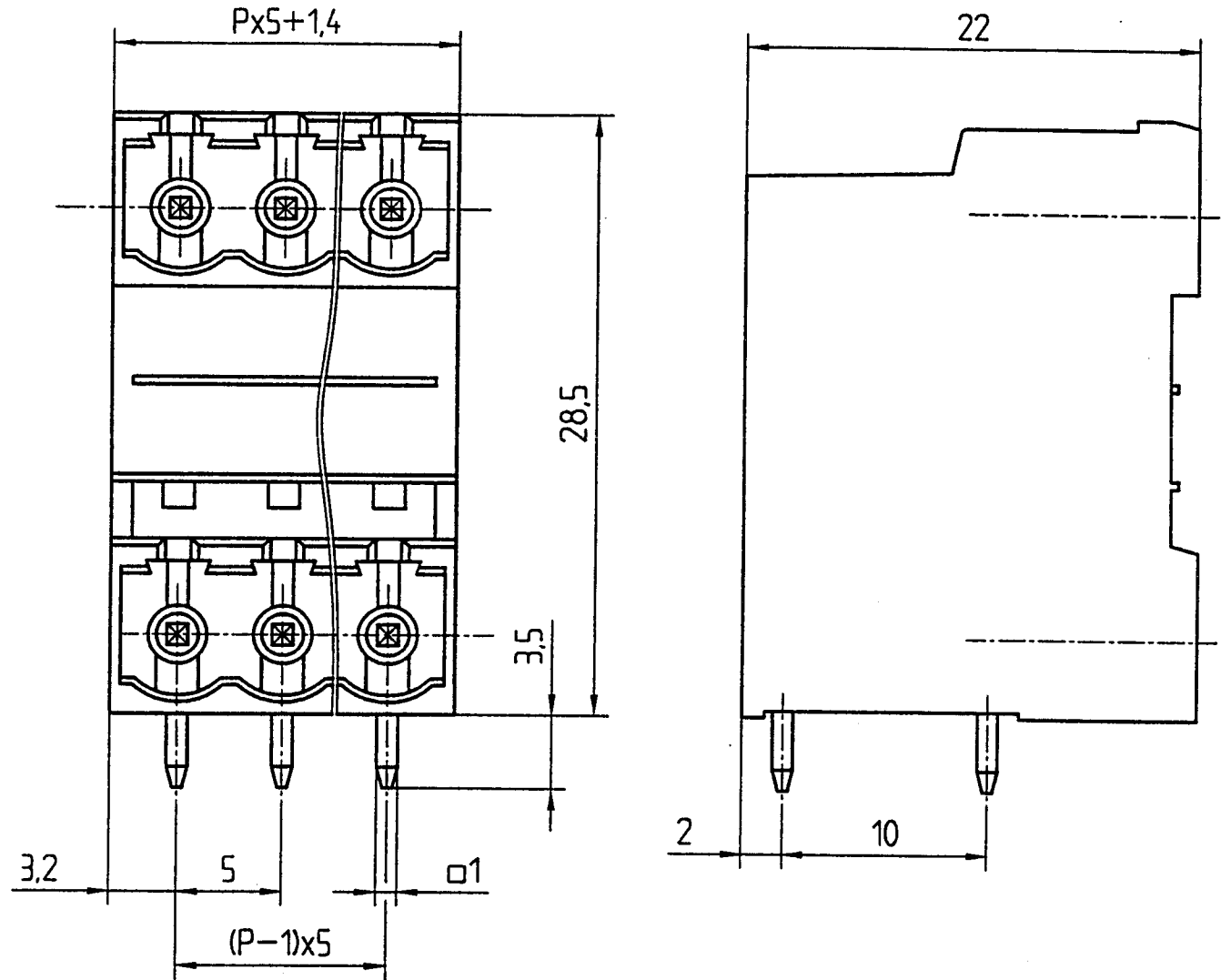


Ratings:
 Current 15A
 Voltage 300 VB
 Test Voltage 2.0 kV

Dimensions:
 Spacing 5.0mm
 PCB Hole Diameter 1.4mm

Materials:
 Insulating Material PA
 Flammability UL94V-0
 Temperature -30°C/+105°C
 Contact Pin Cu
 Color Green



ON - SHORE TECHNOLOGY, INC.

Part Number
EDSTL971/

* - NUMBER OF POSITIONS

Units
 mm

Drawing

Reviewed

Approved

Date
 1/23/98

Sheet 1 of 1

Rev. A