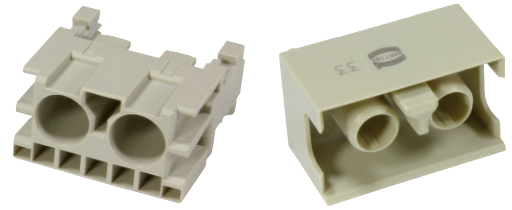


Number of contacts

0+2



Male and female connectors

Identification	No. of contacts	Part number	Drawing	Dimensions in mm
<p>Male connector, angled (without special contacts)</p> <p>Order high current, high voltage, coaxial and fibre optic contacts separately, see pages 01.40 ff</p>	<p>0 + 2</p>	<p>09 29 002 3201</p>	<p>max 23 20 A-A 90° 3.75 3.5 2.5 10 18.5 13 23.7 B 4x2.5(±0.1) holes for special contacts acc. to DIN 41626 B board layout for straight contacts acc. to DIN 41626 B board layout for angled contacts acc. to DIN 41626 2x $\varnothing 2.15^{+0.05}$ 2x $\varnothing 2.75^{+0.05}$ 10 6 9.5 5.08 2.54 2.46 5.08 all holes $\varnothing 2.05$</p>	
<p>Female connector, straight (without special contacts)</p> <p>Order high current, high voltage, coaxial and fibre optic contacts separately, see pages 01.40 ff</p>	<p>0 + 2</p>	<p>09 29 002 3401</p>	<p>A 24.8 13.65 10 6.2 holes for special contacts acc. to DIN 41626 A board drillings not metalised 20 10 3.75 10 16.6 14.85 2.5 2x $\varnothing 2.15^{+0.05}$ 2x $\varnothing 2.05$</p>	<p>Dimensions in mm</p>

DIN Signal up to 2 A