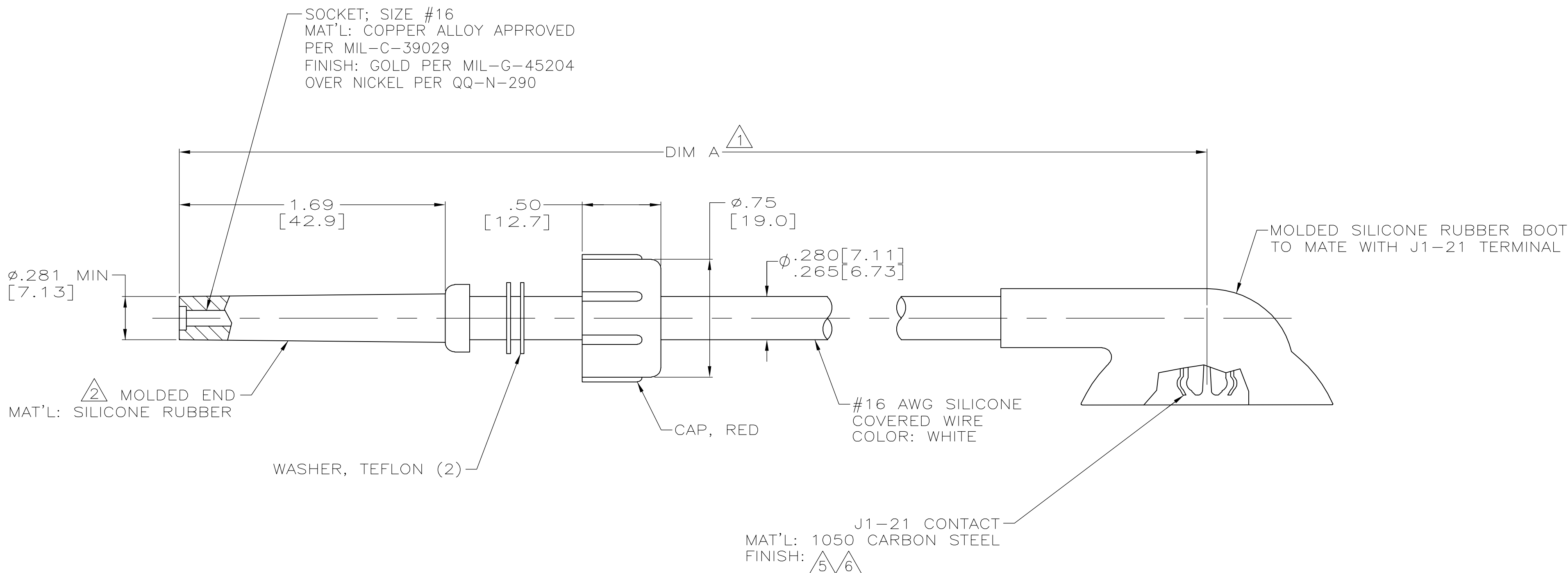


THIS DRAWING IS UNPUBLISHED. RELEASED FOR PUBLICATION - N/A .
 © COPYRIGHT N/A BY TYCO ELECTRONICS CORPORATION. ALL RIGHTS RESERVED.

LOC	DIST	REVISIONS					
DF	S0	P	LTR	DESCRIPTION	DATE	DWN	APVD
		H		REV PER 0H14-0191-05	05-05	AA	DE

PART NO.	A DIM Δ	FINISH	
846977-1	24.25 [615.9]	$\Delta 5$	$\Delta 4$
846977-2	30.00 [762.0]	$\Delta 5$	OBSOLETE
846977-3	60.00 [1524.0]	$\Delta 5$	OBSOLETE
846977-4	8.00 [203.2]	$\Delta 5$	
846977-5	15.00 [381.0]	$\Delta 5$	
846977-6	10.00 [254.0]	$\Delta 5$	OBSOLETE
846977-7	10.00 [254.0]	$\Delta 5$	OBSOLETE
846977-8	12.00 [304.8]	$\Delta 5$	
846977-9	41.00 [1041.4]	$\Delta 5$	OBSOLETE
1-846977-0	16.00 [406.4]	$\Delta 5$	OBSOLETE
1-846977-1	18.00 [457.2]	$\Delta 5$	
1-846977-2	20.00 [508.0]	$\Delta 5$	OBSOLETE
1-846977-3	36.00 [914.4]	$\Delta 5$	
5-846977-1	24.25 [615.9]	$\Delta 6$	
5-846977-4	8.00 [203.2]	$\Delta 6$	
5-846977-5	15.00 [381.0]	$\Delta 6$	

- $\Delta 1$ TOLERANCE: UP TO 24.00 [609.6] = ± 1.2 [± 3.0]
24.00 [609.6] & UP = $\pm 1\%$
- $\Delta 2$ TO MATE WITH AMP LGH-1L RECEPTACLES WITH 1.69 [42.9] BARREL DEPTH.
- 3. MARKED PER MIL-STD-130
- $\Delta 4$ SPECIAL PACKAGING FOR -1 ONLY. ONE LEAD PER BAG.
- $\Delta 5$ PLATED 93/7 TIN-LEAD OR TIN PER ASTM-B-545 OVER NICKEL PER AMS-QQ-N-290.
- $\Delta 6$ PLATED TIN PER ASTM-B-545 OVER NICKEL PER AMS-QQ-N-290.



THIS DRAWING IS A CONTROLLED DOCUMENT.		DWN C.C.THOMAS 24-APR-97	Tyco Electronics Corporation Harrisburg, Pa 17105-3608	
DIMENSIONS: INCHES		CHK S.GLATFELTER 09-SEP-97		
TOLERANCES UNLESS OTHERWISE SPECIFIED:		APVD S.GLATFELTER 09-SEP-97	NAME LEAD ASSY WITH J1-21 CONTACT LGH-1L	
0 PLC ± - 1 PLC ± - 2 PLC ± .02[0.5] 3 PLC ± .0050[.13] 4 PLC ± - ANGLES ± - FINISH -		PRODUCT SPEC -	RESTRICTED TO -	
MATERIAL		APPLICATION SPEC -	SIZE A2	CAGE CODE 00779
		WEIGHT -	DRAWING NO C=846977	
		CUSTOMER DRAWING	SCALE 2:1	SHEET 1 OF 1
			REV H	