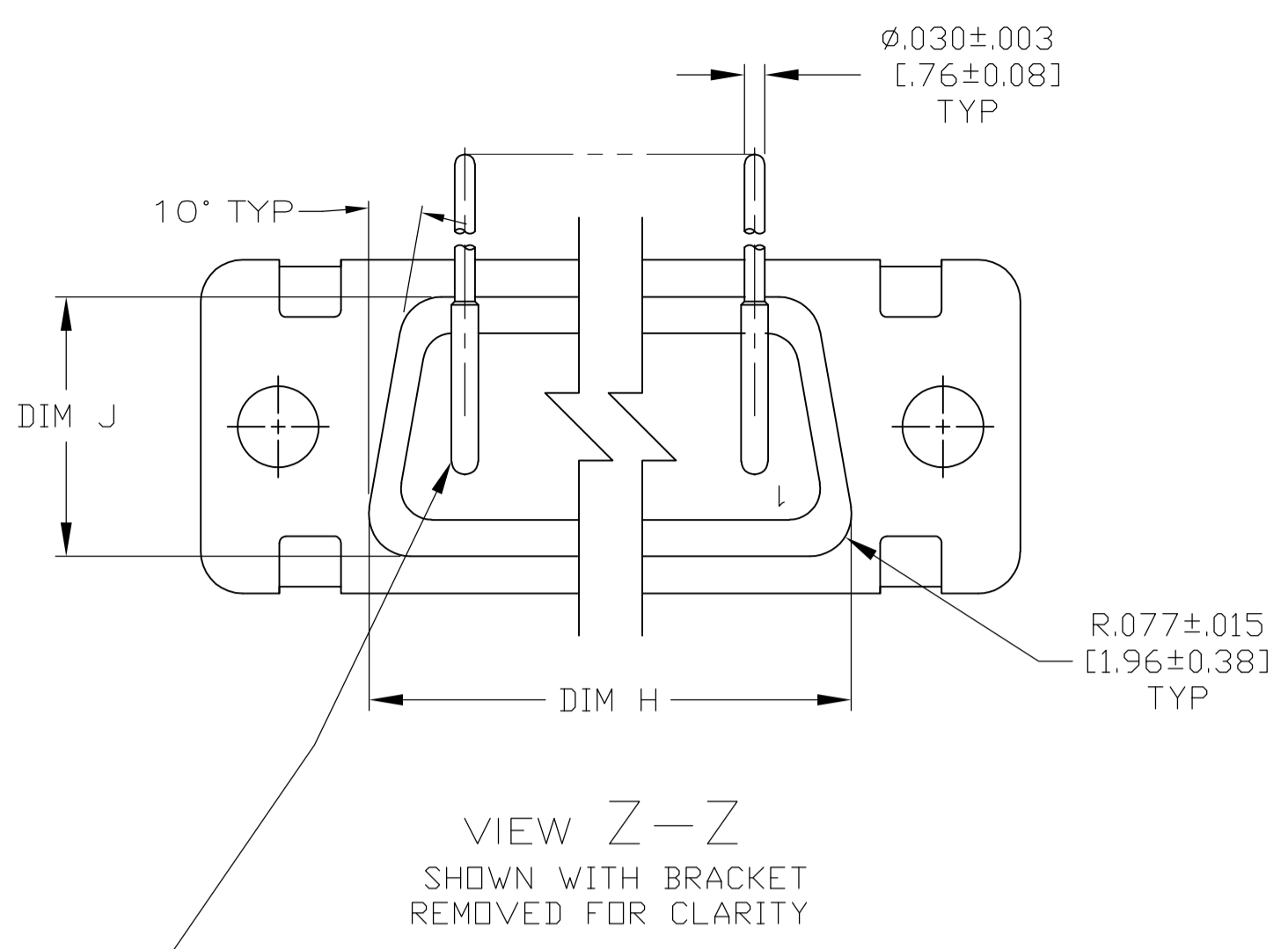
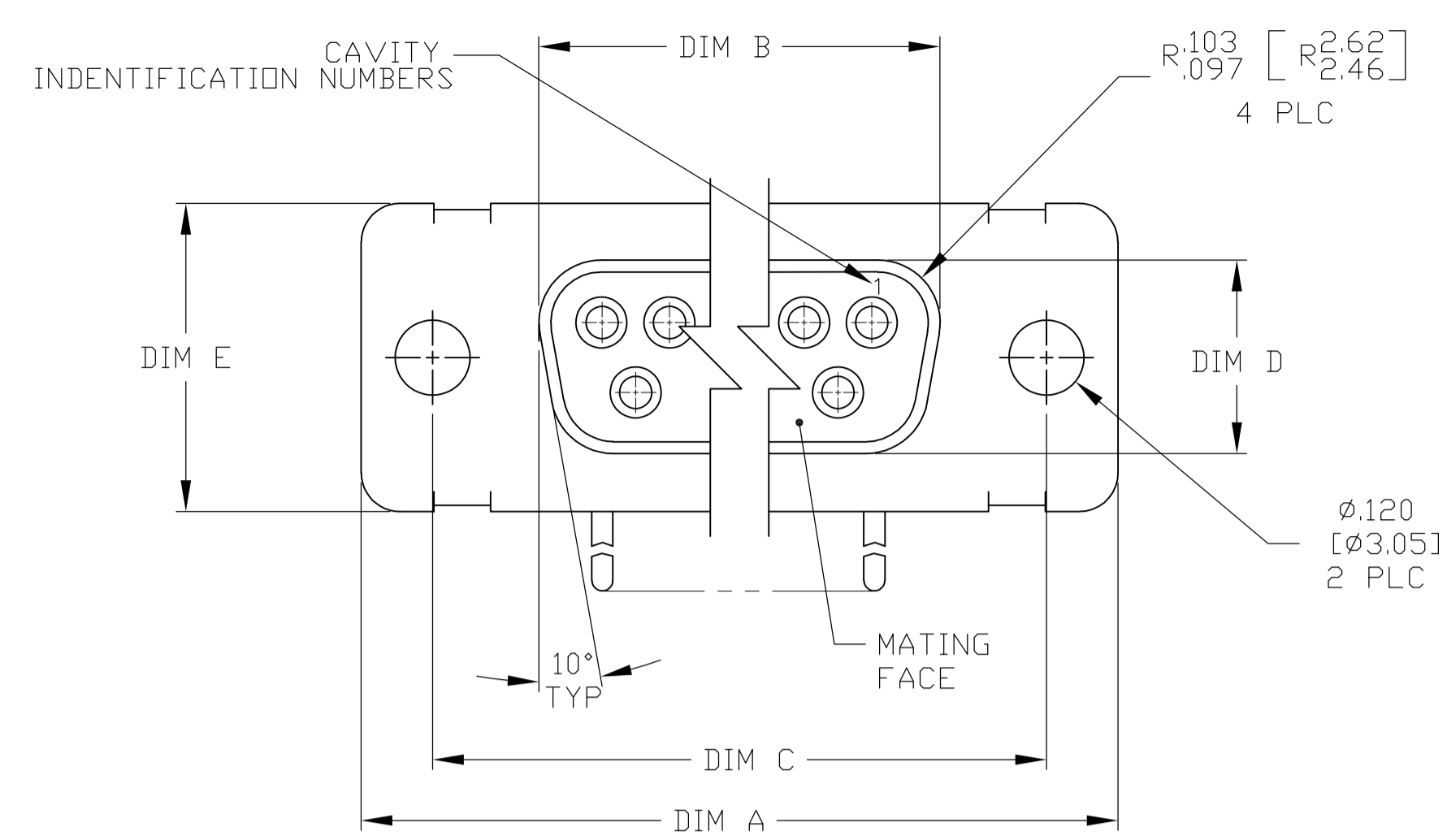
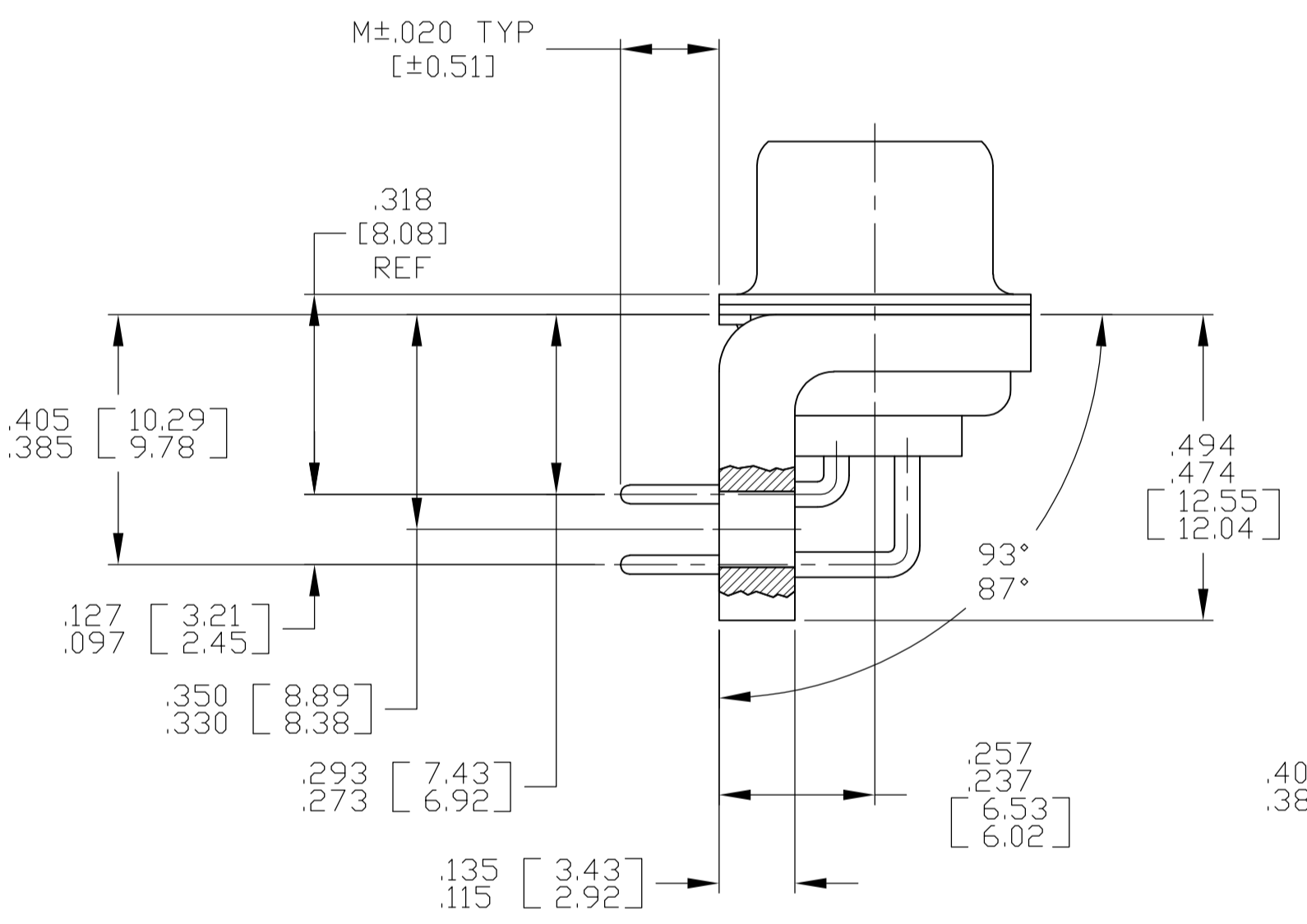
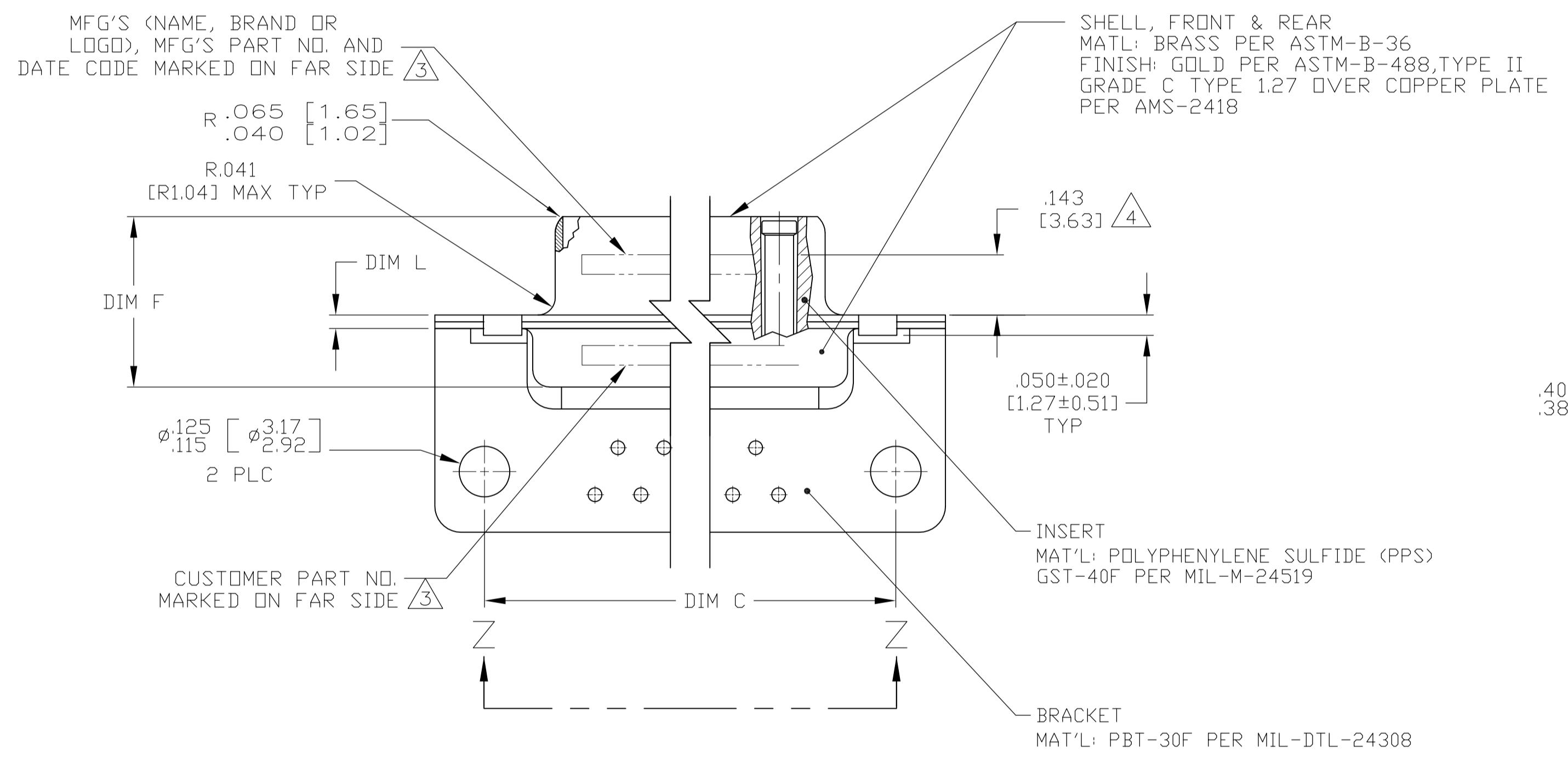


REVISES		DATE	BY	APP'D
F	REV PER ECO 15-015338	10-28-15	CT	CD

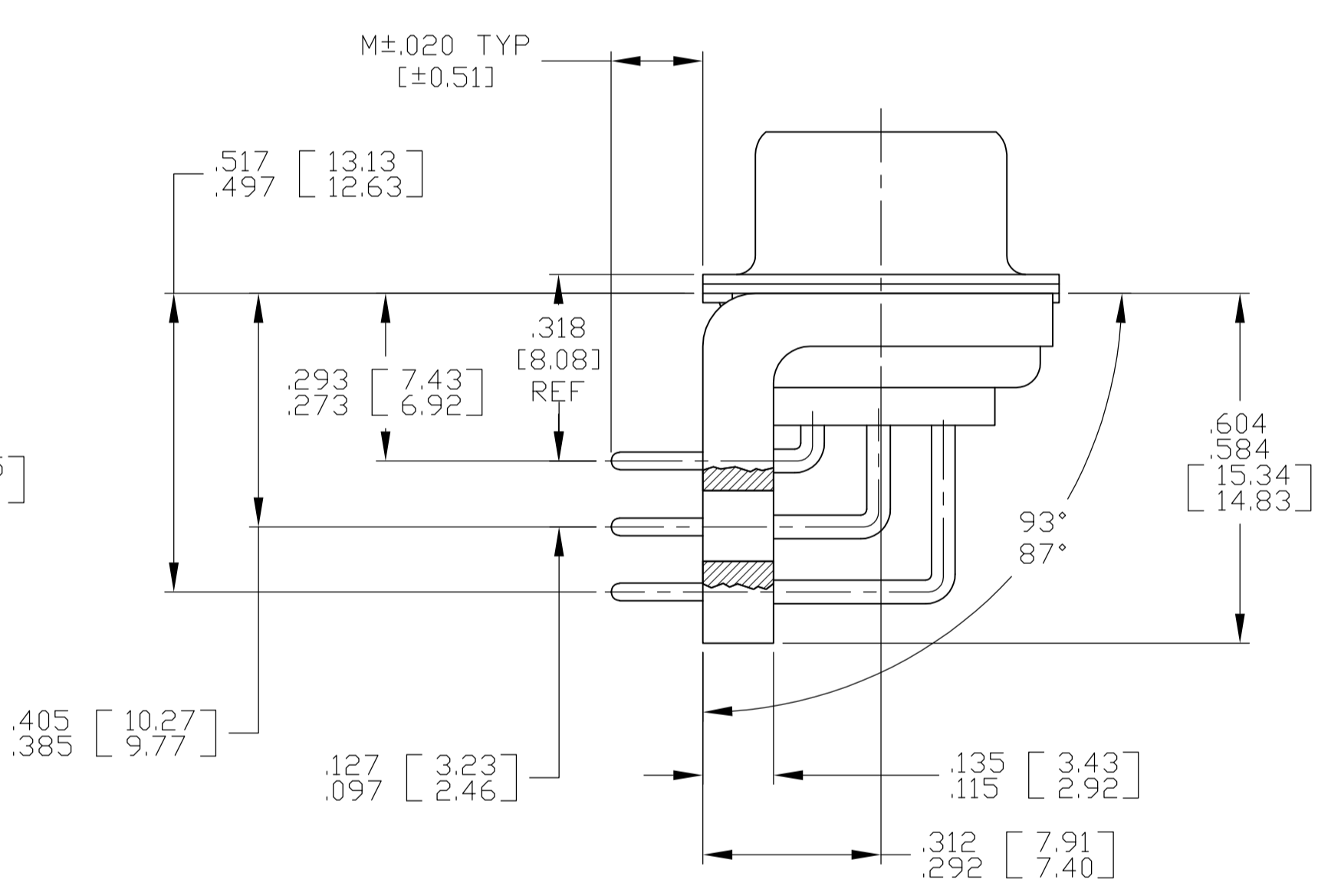


VIEW Z-Z
 SHOWN WITH BRACKET
 REMOVED FOR CLARITY
 CONTACT (QTY = NO. OF POSN)
 MATL: COPPER ALLOY
 FINISH: GOLD PER ASTM-B-488, TYPE II,
 GRADE C, CLASS 1:27 OVER COPPER PLATE
 PER AMS-2418

1. SEE SHEET 2 FOR RECOMMENDED P.C. BOARD LAYOUT. TRUE POSITION TOLERANCE FOR P.C. BOARD LAYOUT IS .010 [0.25] AT MAX MATERIAL CONDITION. SUGGESTED BOARD THICKNESS IS .062 [1.57].
2. THE CONNECTORS DESCRIBED IN THIS DOCUMENT MEET THE REQUIREMENTS OF MIL-DTL-24308 AND MATE WITH ANY RECEPTACLE CONNECTOR WITH SAME INSERT ARRANGEMENT.
3. MARKED .047-.062 HIGH CHARACTERS. FAR SIDE REFERS TO THE WIDE SIDE OF THE KEYSTONE. NEAR SIDE REFERS TO THE NARROW SIDE OF THE KEYSTONE. IF THE REAR SHELL IS TOO SMALL FOR THE ENTIRE CUSTOMER PART NUMBER, MARKING SHALL BE LOCATED AS FOLLOWS:
 - A. "B010811" ON FRONT SHELL, FAR SIDE.
 - B. REST OF NUMBER ON REAR SHELL, FAR SIDE.
 - C. "MFG'S" (NAME, BRAND OR LOGO), AND DATE CODE ON FRONT SHELL, NEAR SIDE.
 - D. MFG'S PART NUMBER ON REAR SHELL, NEAR SIDE.
4. POINT OF ELECTRICAL ENGAGEMENT AS MEASURED WITH A .039-.0393 DIAMETER SQUARE ENDED TEST PIN.



SHELL SIZE 1 THRU 4
 CONTACT CONFIGURATION



SHELL SIZE 5 CONTACT
 CONFIGURATION

M	L	J	H	F	E	D	C	B	A	NO OF POS	SHELL SIZE	CUSTOMER P/N ON CONNECTOR	MFG'S P/N ON CONNECTOR	PART NUMBER
.188 [4.77]	.040 [1.02]	.544 [13.82]	2.188 [55.58]	.439 [11.15]	.620 [15.75]	.428 [10.87]	2.411 [61.24]	2.069 [52.55]	2.650 [67.31]	50	5	B010811-0030	1-1883271-5	1-1883271-5
.156 [3.96]	.040 [1.02]	.544 [13.82]	2.188 [55.58]	.439 [11.15]	.620 [15.75]	.428 [10.87]	2.411 [61.24]	2.069 [52.55]	2.650 [67.31]	50	5	B010811-0028	1-1883271-0	1-1883271-0
.125 [3.17]	.049 [1.24]	.432 [10.97]	1.635 [41.53]	.439 [11.15]	.509 [12.93]	.316 [8.03]	1.857 [47.17]	1.516 [38.51]	2.103 [53.42]	25	3	B010811-0014	1883271-3	1883271-3
.125 [3.17]	.040 [1.02]	.432 [10.97]	.769 [19.53]	.439 [11.15]	.509 [12.93]	.316 [8.03]	.989 [25.12]	.648 [16.46]	1.228 [31.19]	9	1	B010811-0002	1883271-1	1883271-1

THIS DRAWING IS A CONTROLLED DOCUMENT.

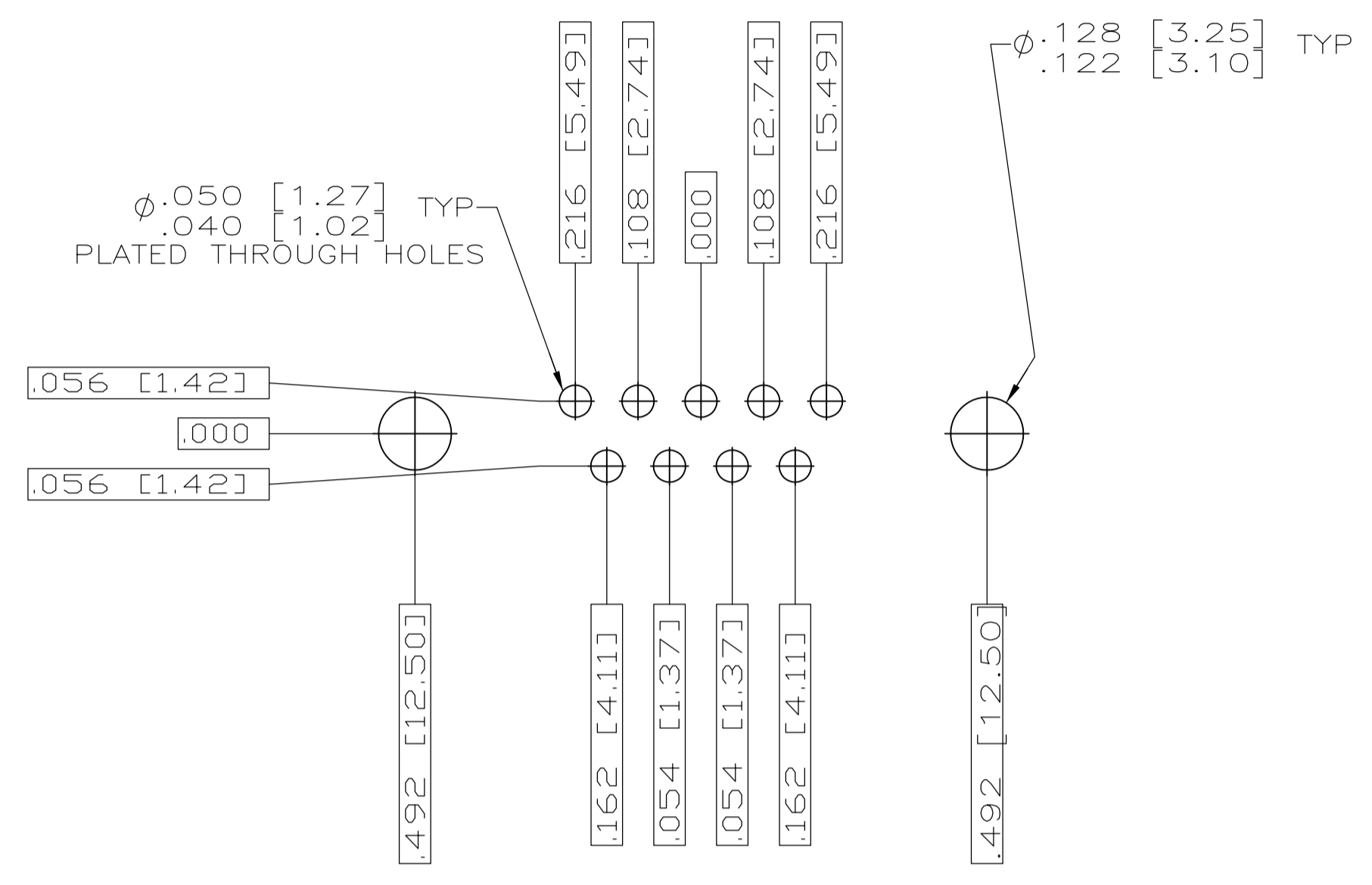
DIMENSIONS: INCHES [mm]	TOLERANCES UNLESS OTHERWISE SPECIFIED:	DIN C.C. THOMAS 3-1-06	DATE
0 PLC ± .005	1 PLC ± .005	CHK D. MILLER 3-1-06	
2 PLC ± .005	3 PLC ± .005 [0.13]	APP'D D. MILLER 3-1-06	
4 PLC ± .005	ANGLES ± .1°	PRODUCT SPEC	
MATERIAL SEE CALLOUTS	FINISH SEE CALLOUTS	APPLICATION SPEC	
CUSTOMER DRAWING		WEIGHT	RESTRICTED TO

RECEPTACLE ASSEMBLY, AMPLITE, RT ANGLE, SERIES 109, SIZE 1 AND 5

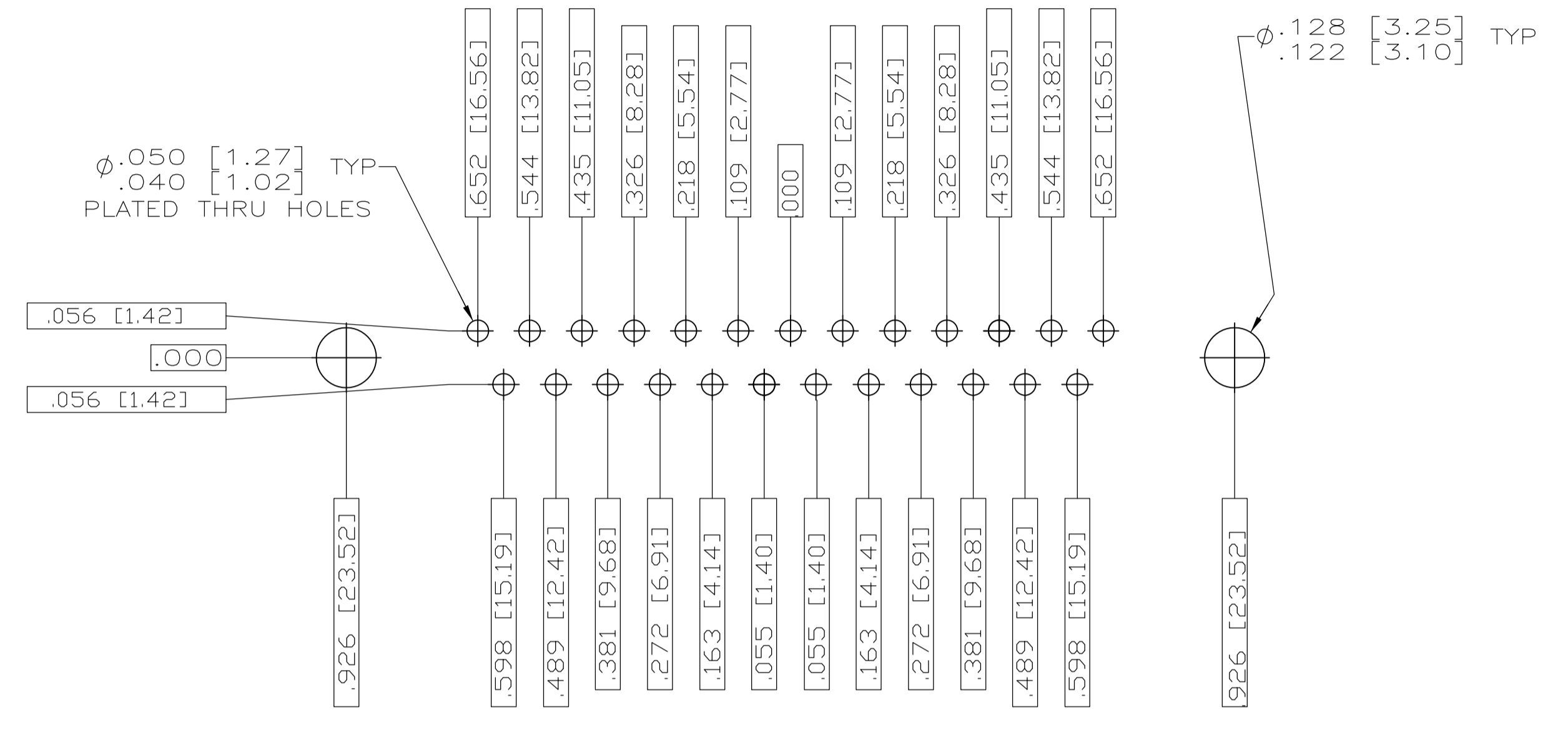
SIZE: A1 CAGE CODE: 00779 DRAWING NO: 1883271

SCALE: 4:1 SHEET: 1 OF 2 REV: F

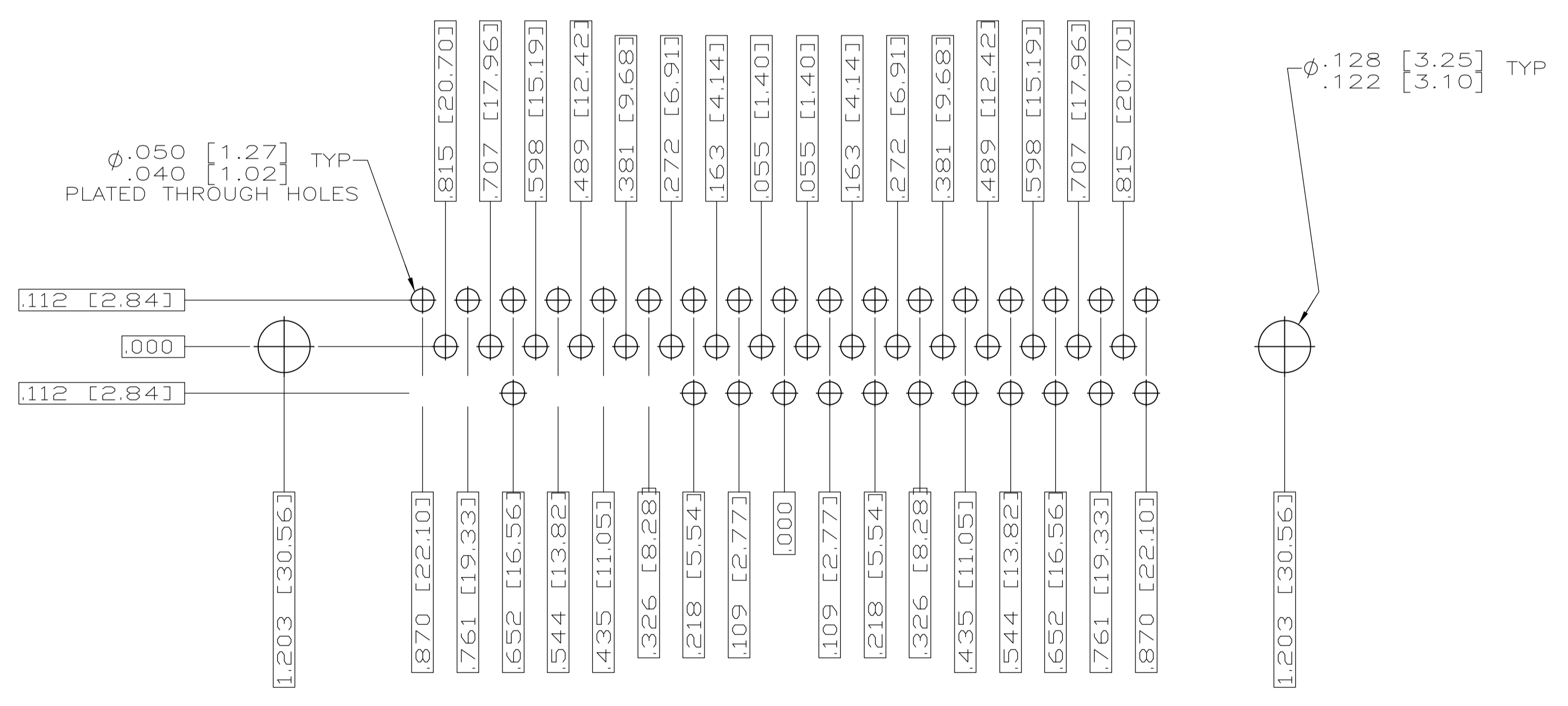
LOC		DIST		REVISIONS			
P	LTR	DESCRIPTION	DATE	DN	APVD		
-	-	SEE SHEET #1	-	-	-	-	-
D		REV PER ECO-08-018752	8-21-08	PK	BW		



RECOMMENDED P.C. BOARD LAYOUT
SHELL SIZE 1 (9 POSITION)



RECOMMENDED P.C. BOARD LAYOUT
SHELL SIZE 3 (25 POSITION) Δ



RECOMMENDED P.C. BOARD LAYOUT
SHELL SIZE 5 (50 POSITION)

THIS DRAWING IS A CONTROLLED DOCUMENT.		DIN	C.C.THOMAS	3-1-06	TE Connectivity
DIMENSIONS: INCHES [mm]		CHK	D.MILLER	3-1-06	
TOLERANCES UNLESS OTHERWISE SPECIFIED:		APVD	D.MILLER	3-1-06	NAME
0 PL ± - 1 PL ± - 2 PL ± - 3 PL ± .005 [0.13] 4 PL ± - ANGLES ± 1°		APPLICATION SPEC		RECEPTACLE ASSEMBLY,AMPLITE,RT ANGLE, SERIES 109,SIZE 1 AND 5	
MATERIAL SEE CALLOUTS		FINISH SEE CALLOUTS		WEIGHT	RESTRICTED TO
CUSTOMER DRAWING		SIZE	A1	CAGE CODE	DRAWING NO
		SCALE	4:1	REV	F
		SHEET	2	OF	2
		REV		NO	1883271