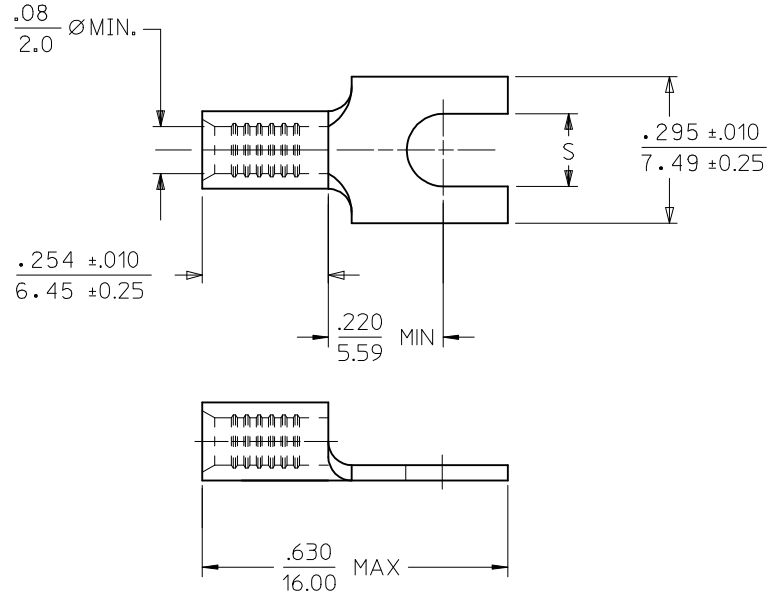


MATERIAL NUMBER	ENGINEERING NUMBER	STUD SIZE	"S" ±.005/(0.13)	PACKAGING
191280021	B-1781-06	6	.146/(3.71)	LOOSE PIECE
191280023	B-1781-08	8	.173/(4.39)	
191280025	B-1781-10	10	.198/(5.03)	



SALES DRAWING

- NOTES:
 1. MATERIAL: COPPER .031/(0.79) THICK.
 2. PLATING: TIN
 3. INSULATION: NONE
 4. PARTS ARE ROHS COMPLIANT.

RELEASE SD EC NO: WNA2009-0593 DRW: ETHRODAHL 2009/03/16 CHKD: JMACNEIL 2009/03/20 APPR: JMACNEIL 2009/03/20	DESCRIPTION REV A	QUALITY SYMBOLS	GENERAL TOLERANCES (UNLESS SPECIFIED)	DIMENSION STYLE	SCALE	DESIGN UNITS	THIRD ANGLE PROJECTION		
		▼=0 ▽=0	mm INCH 4 PLACES ± --- ± --- 3 PLACES ± --- ± .005 2 PLACES ± 0.13 ± --- 1 PLACE ± --- ± --- ANGULAR ± ---°	IN/MM	4:1	INCH	DRAWN BY ETHRODAHL DATE 2009/03/16 CHECKED BY JMACNEIL DATE 2009/03/16 APPROVED BY JMACNEIL DATE 2009/03/16	TITLE BLOCK SPADE KRIMPTITE LONG BARREL 16-14 AWG MOLEX INCORPORATED DOCUMENT NO. SD-19128-001 SHEET NO. 1 OF 1	
		DRAFT WHERE APPLICABLE MUST REMAIN WITHIN DIMENSIONS			SEE CHART	MATERIAL NO.			
					SIZE B	THIS DRAWING CONTAINS INFORMATION THAT IS PROPRIETARY TO MOLEX INCORPORATED AND SHOULD NOT BE USED WITHOUT WRITTEN PERMISSION			