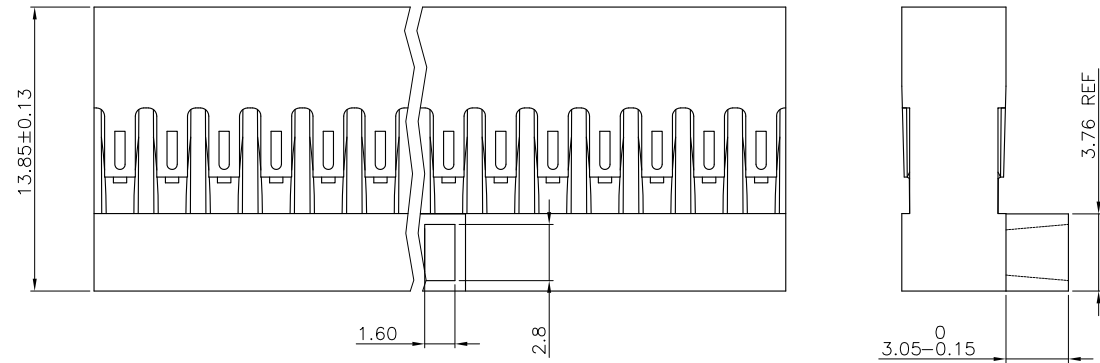


PRODUCT NUMBER
65846-0XX(E)LF

PIN STYLE
SEE SHEET 2

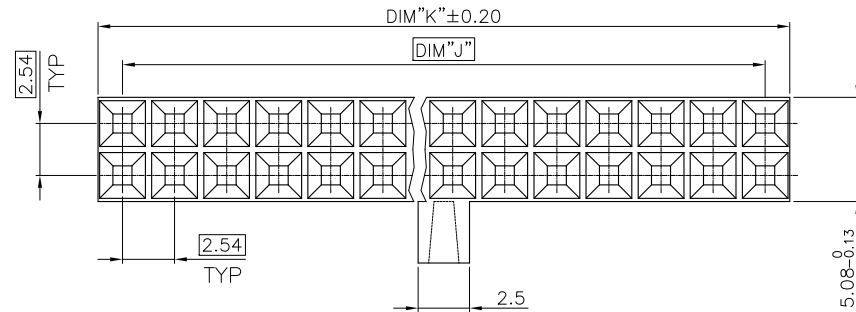
INDICATES THE PRODUCT IS RoHS
COMPLIANT, SEE NOTE 6

65846-YXXLF OR 65846-YXXELF ARE
EXACTLY THE SAME PRODUCTS.
EXTENSION "E" JUST FOR OLD EUROPEAN
DESIGN AND MANUFACTURING SITE



NOTES:

1. MOLDING MATERIAL : MODIFIED POLYPHELYNENE
COLOR BLACK, UL 94 VO
2. LATCH MUST WITHSTAND 18N MIN PULL OUT FORCE
3. STANDARD PACKAGING IN POLYBAGS
4. TERMINALS MUST BE CRIMPED PROPERLY FOR
SATISFACTORY LATCHING :
- FOR CRIMPING INSTRUCTIONS, SEE TA-75 AND TA-295
- FOR TERMINAL APPLICATION SEE TA-531.
PRODUCT SPECIFICATION: BUS-12-067.
5. THIS HOUSING IS INTENDED FOR USE WITH
MINI PV TERMINAL WITH 22-36 GAUGE WIRE
6. RoHS COMPLIANT PRODUCT SPECIFICATIONS :
- MEETS PACKAGING SPECS AS PER GS-14-920
- PRODUCT MEETS EUROPEAN UNION DIRECTIVES
AND OTHER COUNTRY REGULATIONS AS
DESCRIBED IN GS-22-008.
- THE PRODUCT IS NOT INTENDED TO BE EXPOSED
TO A MANUFACTURING SOLDER PROCESS.



| | | | | | |
|--------------------------|----------------|---------------------|-------------------------------|---------------------------------------|---------------------------|
| mal't. code SEE NOTES | | surface ISO 1302 | tolerance ISO 406 ISO 1101 | projection | product family BERCONN |
| ltr | ecn no | dr | date | tolerances unless otherwise specified | |
| Y | F12-0064 | LMU | 12.06.08 | angles | linear |
| AA | B-14321 | LMU | 13.03.21 | | |
| | | | | dr | L.MULIN 11.01.10 |
| | | | | engr | L.MULIN 11.01.10 |
| | | | | chr | |
| | | | | appd | L.MU 11.01.10 |
| sheet index | revision sheet | AA | Y | | |
| | | 1 | 2 | | |

| | | | |
|--|--|--------------|---------------------------|
| title MINI LATCH DR POLARIZED HSG 2.54mm | | scale 5:1 | product family BERCONN |
| dwg no 65846 | | sheet 1 of 2 | size A3 |
| type CUSTOMER | | Drawing | |



Copyright FCI

| PIN STYLE | No. OF POS. | DIM J | DIM K |
|-----------|-------------|-------|-------|
| 01 | 2x12 | 27.94 | 30.33 |
| 02 | 2x15 | 35.56 | 37.95 |
| 03 | 2x19 | 45.72 | 48.11 |
| 04 | 2x22 | 53.34 | 55.73 |
| 05 | 2x27 | 66.04 | 68.43 |
| 06 | 2x10 | 22.86 | 25.25 |
| 07 | 2x07 | 15.24 | 17.63 |
| 08 | 2x09 | 20.32 | 22.71 |
| 09 | 2x32 | 78.74 | 81.13 |
| 10 | 2x05 | 10.16 | 12.55 |
| 11 | 2x08 | 17.78 | 20.17 |
| 12 | 2x25 | 60.96 | 63.35 |
| 13 | 2x30 | 73.66 | 76.05 |
| 14 | 2x02 | 2.54 | 4.93 |
| 15 | 2x03 | 5.08 | 7.47 |
| 16 | 2x04 | 7.62 | 10.01 |
| 17 | 2x06 | 12.70 | 15.09 |
| 18 | 2x11 | 25.40 | 27.79 |
| 19 | 2x13 | 30.48 | 32.87 |
| 20 | 2x14 | 33.02 | 35.41 |
| 21 | 2x16 | 38.10 | 40.49 |
| 22 | 2x17 | 40.64 | 43.03 |
| 23 | 2x18 | 43.18 | 45.57 |
| 24 | 2x20 | 48.26 | 50.65 |
| 25 | 2x21 | 50.80 | 53.19 |
| 26 | 2x23 | 55.88 | 58.27 |
| 27 | 2x24 | 58.42 | 60.81 |
| 28 | 2x26 | 63.50 | 65.89 |
| 29 | 2x28 | 68.58 | 70.97 |
| 30 | 2x29 | 71.12 | 73.51 |
| 31 | 2x31 | 76.20 | 78.59 |
| 32 | 2x33 | 81.28 | 83.67 |
| 33 | 2x34 | 83.82 | 86.21 |
| 34 | 2x35 | 86.36 | 88.75 |
| 35 | 2x36 | 88.90 | 91.29 |



Copyright FCJ

| | | | | | | | | | |
|-------------|----------------|---------------------|----------|---------------------------------------|---------|----------------|--|--|--|
| mat'l. code | | surface ISO 1302 | | tolerance ISO 406 ISO 1101 | | projection | | product family BERCONN | |
| ltr | ecn no | dr | date | tolerances unless otherwise specified | | | | | |
| Y | F12-0064 | LMU | 12.06.08 | angles | linear | .x ±0.3 | | title MINI LATCH DR POLARIZED HSG 2.54mm | |
| | | | | | | .xx ±0.13 | | | |
| | | | | | | .xxx ±0.05 | | | |
| | | | | dr | L.MULIN | 11.01.10 | | scale 5:1 | |
| | | | | engr | L.MULIN | 11.01.10 | | dwg no sheet 2 of size | |
| | | | | chr | | | | 65846 A3 | |
| | | | | appd | L.MU | 11.01.10 | | type CUSTOMER Drawing | |
| sheet index | revision sheet | | | | | | | | |