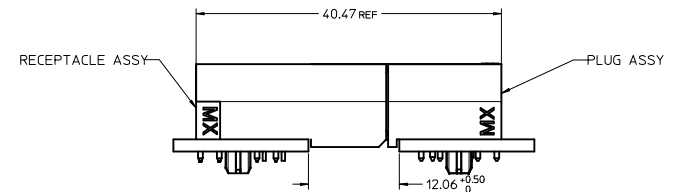
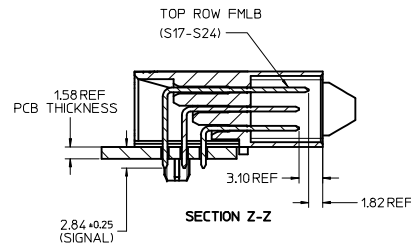
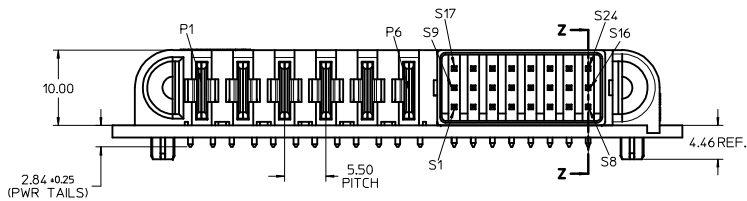
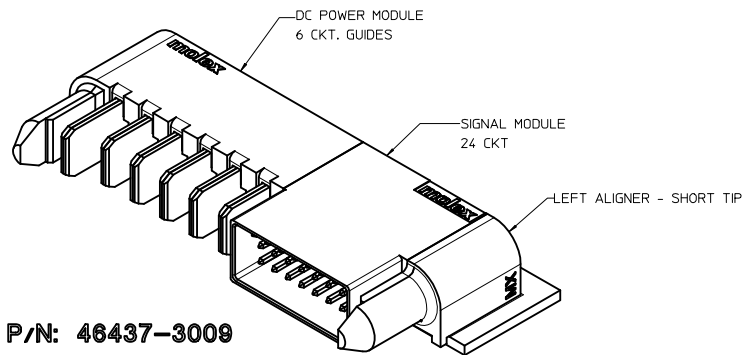


RECOMMENDED PCB LAY-OUT AND KEEP-OUT ZONE



- NOTES:
 1. MATERIAL:
 -HOUSINGS: LCP UL94, V-0, COLOR: BLACK.
 -TERMINALS: COPPER ALLOY.
 -PLATING: 0.00127 NICKEL OVERALL WITH 0.00254 SELECTIVE TIN ON SOLDER TAILS AND 0.000762 SELECTIVE GOLD ON CONTACT AREA.
 2. ASSEMBLIES PACKED IN TRAYS, SPO: TBD
 3. PC BOARD REQUIRES SOLDER THRU HOLES, REFER TO PS-46436-100 FOR DETAILS
 4. PRODUCT SPEC: PS-46436-100.
 5. APPLICATION SPEC: AS-46436-100.
 6. PRODUCT TO MEET RoHS REQUIREMENTS.
 7. ASSEMBLY MATES TO MOLEX RECEPTACLE ASSEMBLY P/N 46436-3009 OR 46562-3009.



P/N: 46437-3009

RELEASED INITIAL RELEASE: 25/46 2009/05/05 DRAWN: JUILLES 2009/05/05 CHKD: J.KOH 2009/05/05 APPR: APATEL	DESCRIPTION RA PLUG ASSY TEN60 POWER G-6P-24S-G(IBM)	QUALITY SYMBOLS		GENERAL TOLERANCES (UNLESS SPECIFIED)		DIMENSION STYLE		SCALE	DESIGN UNITS	THIRD ANGLE PROJECTION	
						MM ONLY		NTS	METRIC		
		4 PLACES ± --- ± ---		mm INCH		DRAWN BY DATE		TITLE		MATERIAL NO.	
		3 PLACES ± --- ± ---				KJKOH 2009/03/11		RA PLUG ASSY TEN60 POWER G-6P-24S-G(IBM)		DOCUMENT NO.	
2 PLACES ± 0.25 ± ---				CHECKED BY DATE		MATERIAL NO.		SHEET NO.			
1 PLACE ± 0.25 ± ---				KJKOH 2009/03/11		46437-3009		SD-46437-309			
ANGULAR ± 1/2°				APPROVED BY DATE		SHONG		1 OF 1			
DRAFT WHERE APPLICABLE MUST REMAIN WITHIN DIMENSIONS				MATERIAL NO.		46437-3009		SD-46437-309			
				DATE		SHONG		THIS DRAWING CONTAINS INFORMATION THAT IS PROPRIETARY TO MOLEX INCORPORATED AND SHOULD NOT BE USED WITHOUT WRITTEN PERMISSION			