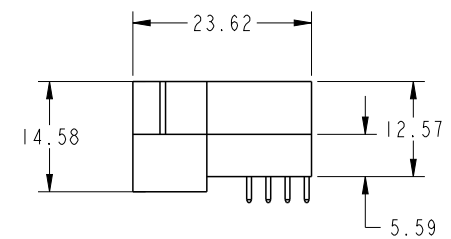
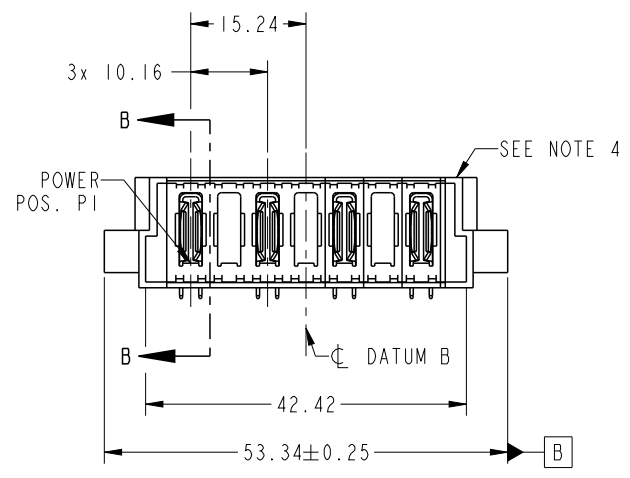
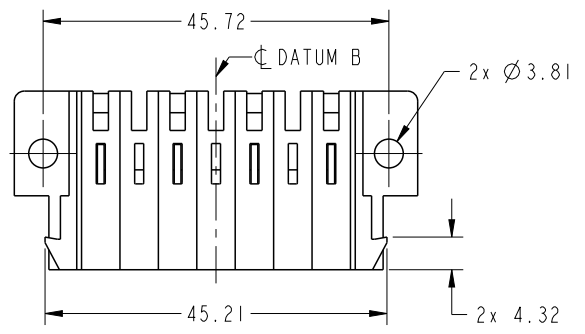


PRODUCT NO. 51939-866-- NOTE 3	POWER							E2
	E1	P1	P2	P3	P4	P5	P6	
	PA	X	PA	X	PA	X	PA	



CODE	DIM "M" MATING LENGTH	CONTACT TYPE
PA	[N/A]	POWER
X	OMITTED	



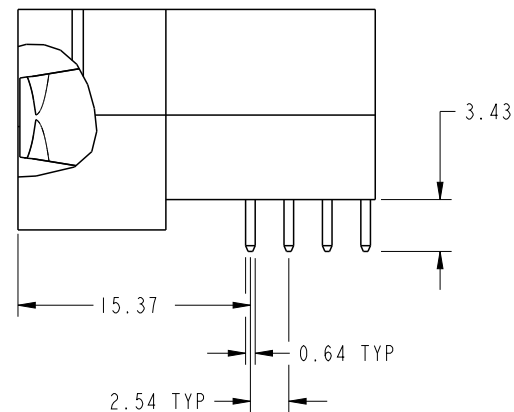
Copyright FCI.

spec ref	*	dr	De-Ming Lu	2014/04/24	projection 	MM ←→	size	A4	scale	1:1
tolerance std	ASME Y14.5	eng	De-Ming Lu	2014/06/30			ecn no	-		
TOLERANCES UNLESS OTHERWISE SPECIFIED		chr	-	-			rel level	Released		
surface	✓	appr	Pei-Ming Zheng	2014/06/30	product family	PwrBlade	rev	A		
ASME Y14.5	linear	0.X	±0.5	www.fci.com	title	7DCP	dwg no	51939-866	sheet 1 of 4	
		0.XX	±0.25							
		0.XXX	±0.1							
	angular	0°	±2°	cat. no.	-	Product - Customer Drw				

Prod File - REV C - 2009-06-09

PRODUCT NUMBER

51939-866--  
NOTE: 3



BROKEN-OUT SECTION B-B  
SCALE 2:1

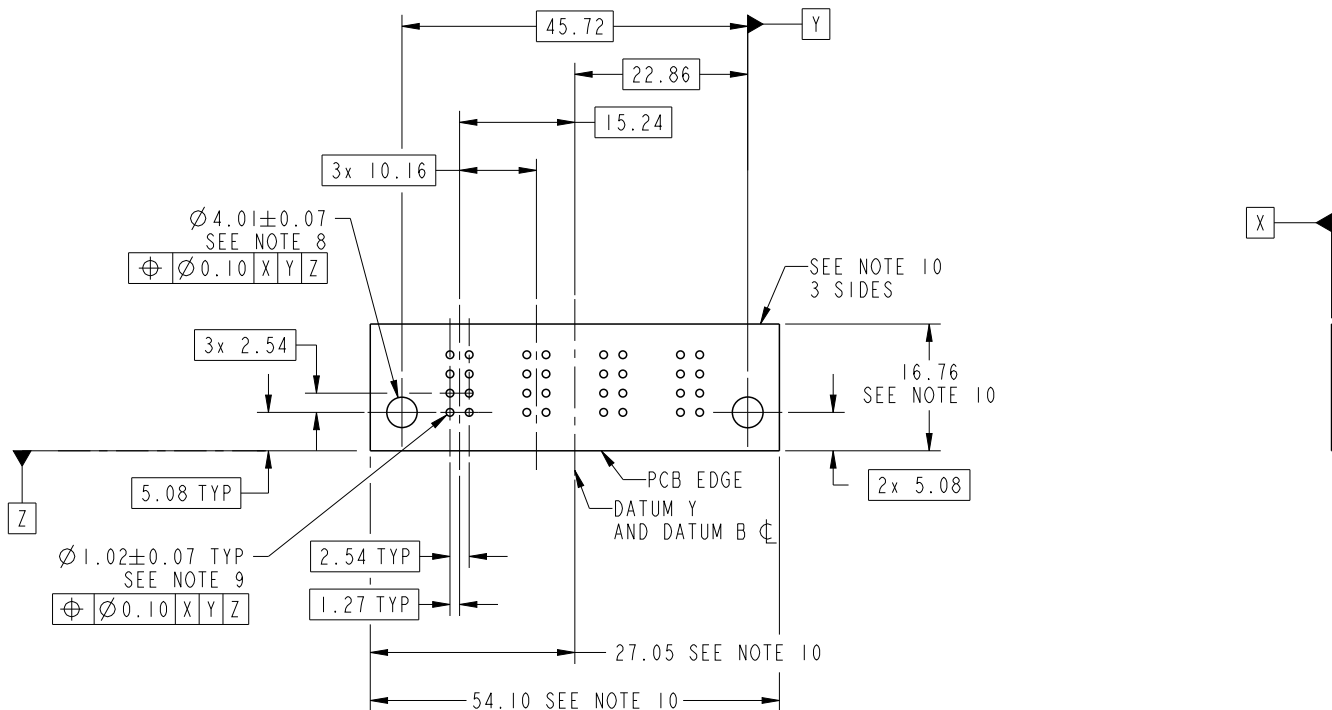


Copyright FCI.

dr	De-Ming Lu	2014/04/24	projection 	MM ←————→	size	A4	scale	1:1
eng	De-Ming Lu	2014/06/30			ecn no	-		
chr	-	-						
appr	Pei-Ming Zheng	2014/06/30	product family	PwrBlade	rel level	<b>Released</b>		
	title	7DCP RIGHT ANGLE SOLDER HEADER		dwg no	51939-866		rev	<b>A</b>
www.fci.com	cat. no.	-	Product - Customer Drw			sheet 2 of 4		

PRODUCT NUMBER

51939-866\_\_  
NOTE: 3



RECOMMENDED PCB LAYOUT

dr	De-Ming Lu	2014/04/24	projection 	MM 	size	A4	scale	1:1
eng	De-Ming Lu	2014/06/30			ecn no	-		
chr	-	-			rel level	Released		
appr	Pei-Ming Zheng	2014/06/30	product family	PwrBlade	rel level	Released		
	title	7DCP RIGHT ANGLE SOLDER HEADER		dwg no	51939-866		rev	A
www.fci.com	cat. no.	-	Product - Customer Drw		sheet 3 of 4			

PRODUCT NUMBER

51939-866\_\_  
NOTE: 3

NOTES:

1. DIMENSIONS AND TOLERANCES ARE IN ACCORDANCE WITH ASME Y14.5M, 1994 UNLESS OTHERWISE SPECIFIED.

CONNECTOR NOTES:

- 2. HOUSING MATERIAL: UL 94 V-0 GLASS FILLED HIGH-TEMP THERMOPLASTIC  
POWER CONTACT MATERIAL: COPPER ALLOY  
SIGNAL PIN MATERIAL: COPPER ALLOY
- 3. SEE ITEM 1 & 2 IN PRINT 10064183 FOR PLATING SPEC OF 51939-866 AND 51939-866LF RESPECTIVELY.
- 4. MANUFACTURER'S NAME, DATE CODE AND OPTIONAL P/N TO APPEAR ON THIS SURFACE. THE MARK CAN BE OMITTED IF THERE IS NOT ENOUGH SPACE ON THIS SURFACE.
- 5. PRODUCT SPECIFICATION GS-12-149.  
APPLICATION SPECIFICATION BUS-20-067.
- 6. PACKAGED IN TRAYS.

PCB NOTES:

- 7. ALL HOLE DIAMETERS ARE FINISHED HOLE SIZE.
- 8. MOUNTING HOLES, WHERE APPLICABLE, ARE UNPLATED.
- 9.  $\varnothing 1.151 \pm 0.025$  DRILLED HOLES PLATED WITH  
0.008 MIN SnPb OR Sn OVER 0.03  
TO 0.08 Cu PLATING TO ACHIEVE  
 $\varnothing 1.02 \pm 0.07$  HOLE.
- 10. CONNECTOR KEEP-OUT ZONE.

dr	De-Ming Lu	2014/04/24	projection 	MM 	size	A4	scale	1:1	
eng	De-Ming Lu	2014/06/30			ecn no	-			
chr	-	-							
appr	Pei-Ming Zheng	2014/06/30	product family	PwrBlade	rel level	Released			
		title	7DCP RIGHT ANGLE SOLDER HEADER		dwg no	51939-866		rev	A
www.fci.com		cat. no.	-	Product - Customer Drw			sheet 4 of 4		



Copyright FCI.