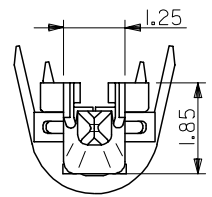
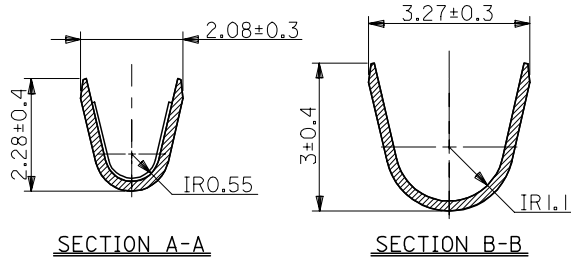
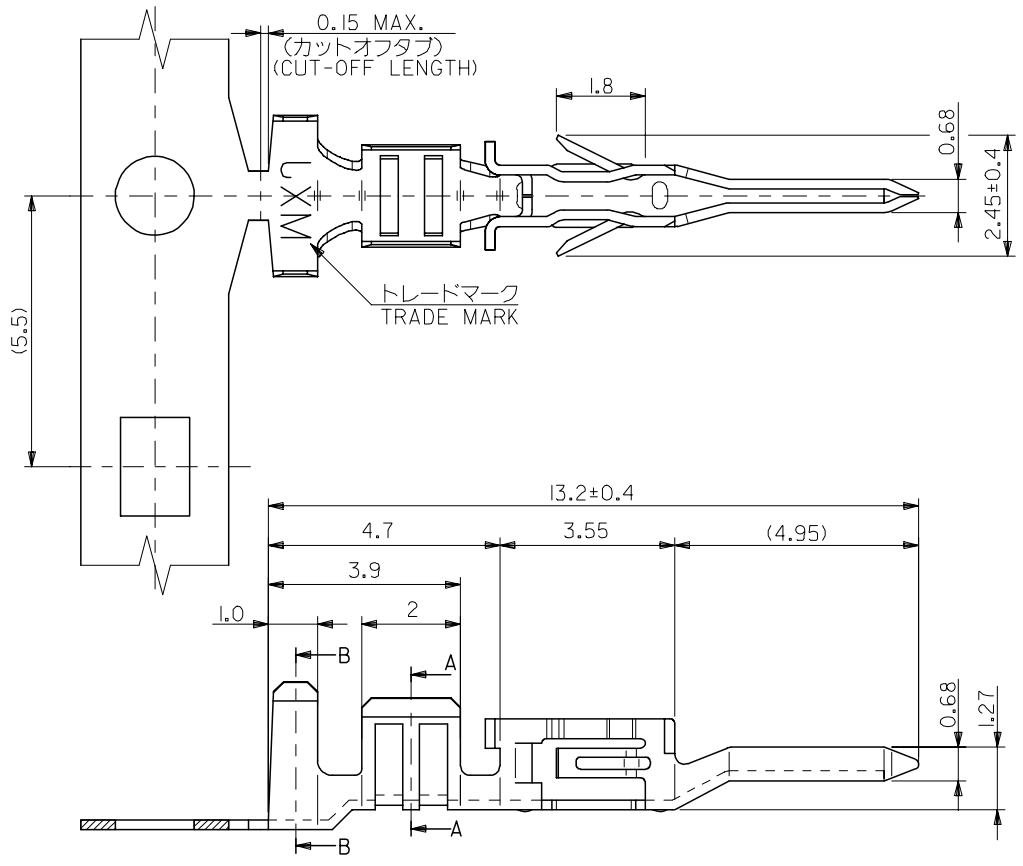


10 9 8 7 6 5 4 3 2 1

F  
E  
D  
C  
B  
A



注記  
NOTES

1. 材質  
MATERIAL  
りん青銅 (板厚: 0.2)  
PHOSPHOR BRONZE (THICKNESS : 0.2)
2. メッキ仕様  
TERMINAL PLATING  
接点部 : 金メッキ 0.25 μm MIN.  
CONTACT AREA : GOLD 0.25 μm MIN.  
圧着部 : 錫メッキ 1.0 μm MIN.  
CRIMP AREA : TIN 1.0 μm MIN.  
下地メッキ : ニッケルメッキ 2 μm MIN.  
UNDER PLATE : NICKEL 2 μm MIN.
3. 適用電線 : UL 1007 , AWG #18~22  
APPLICABLE WIRE RANGE : UL 1007 , AWG #18~22
4. 被覆外径 : φ2.2 MAX.  
INSULATION EXTERNAL DIA : φ2.2 MAX.
5. 適用ハウジング : 51233-\*\*\*\* , 51234-\*\*\*\*  
APPLICABLE HOUSING : 51233-\*\*\*\* , 51234-\*\*\*\*

|                                |              |            |
|--------------------------------|--------------|------------|
| バラ状<br>LOOSE                   | 56119-8328   | 56119-8*** |
| 連鎖状<br>CHAIN                   | 56119-8228   |            |
| 端子形状<br>TERMINAL CONFIGURATION | MATERIAL No. | MODEL No.  |

|   |                                       |            |                            |  |  |                        |                        |  |
|---|---------------------------------------|------------|----------------------------|--|--|------------------------|------------------------|--|
| RELEASED<br>EC NO: J2005-2545<br>DRWN: YSUGIURA01 2005/03/04<br>CHKD: MTANAKA 2005/03/07<br>APPR: NUKITA 2005/03/15<br>REV: 0 | GENERAL TOLERANCES (UNLESS SPECIFIED) |            | DIMENSION STYLE<br>MM ONLY |  | SCALE<br>---   | DESIGN UNITS<br>METRIC | THIRD ANGLE PROJECTION |  |
|   | 10 UNDER                              | ±0.2       | DRAWN BY<br>YSUGIURA       | DATE<br>2005/03/02   | TITLE<br>COMPACT ROBOT CONN.<br>(CRC) CRIMP PIN<br>-LEAD FREE- |                        |                        |  |
|   | 10 OVER 30 UNDER                      | ±0.25      | CHECKED BY<br>MTANAKA      | DATE<br>2005/03/02   | MOLEX INCORPORATED   |                        |                        |  |
|   | 30 OVER                               | ±0.3       | APPROVED BY<br>NUKITA      | DATE<br>2005/03/02   | DOCUMENT NO.<br>SD-56119-004                                   |                        |                        |  |
|   | ANGULAR                               | ±3 °       | MATERIAL NO.<br>SEE CHART  |  | SHEET NO.<br>1 OF 1  |                        |                        |  |
| DRAFT WHERE APPLICABLE<br>MUST REMAIN<br>WITHIN DIMENSIONS  |                                       | SIZE<br>A3 |                            | THIS DRAWING CONTAINS INFORMATION THAT IS PROPRIETARY TO MOLEX<br>INCORPORATED AND SHOULD NOT BE USED WITHOUT WRITTEN PERMISSION |  |                        |                        |  |