

REVISIONS				
EC NO	DATE	REV	DESCRIPTION	CHANGER
	2016.04.13	A	INITIAL RELEASE.	DICK
	2016.04.27	A1	NO CHANGE	DICK

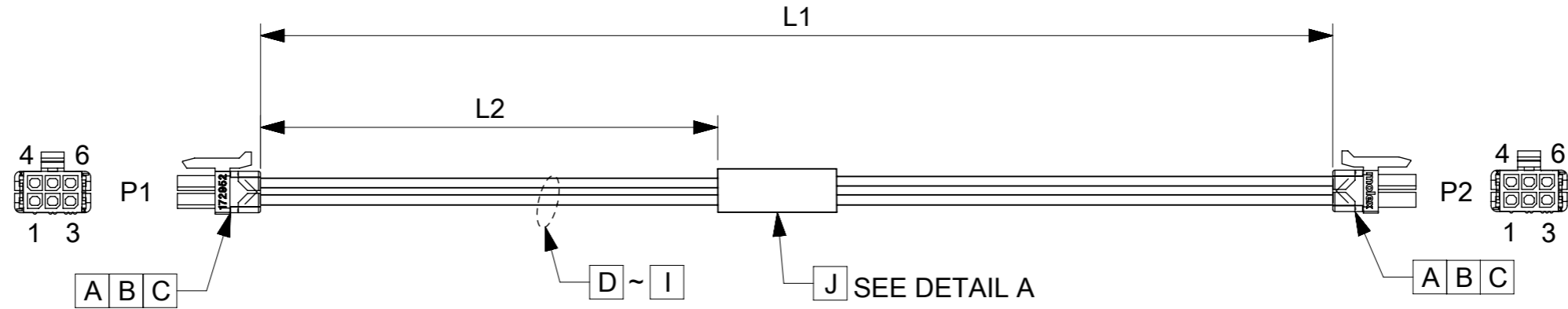
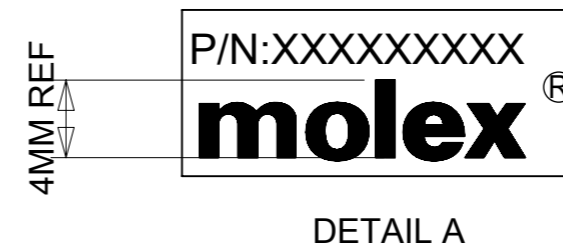


TABLE			
PART NUMBER	L1	L2	TITLE
451320601	150±10	65±8	Microfit 6 Circuit 150MM
451320603	300±10	140±10	Microfit 6 Circuit 300MM
451320610	1000±15	490±10	Microfit 6 Circuit 1M



**NOTES**

- THIS PRODUCT MUST MEET 2011/65/EU ROHS COMPLIANCE.  
此产品需符合 2011/65/EU ROHS环保要求.
- ELECTRICAL PERFORMANCE REFER TO ES-000.  
电气特性参考ES-000.
- LABEL TEXT MUST BE 2mm Min. IN HEIGHT WITH ARIAL FONT.  
标签字高最小2mm,字体ARIAL.
- CONNECTORS REFER TO PS-43045.  
连接器应用参考 PS-43045.
- STICK UL LABEL ON THE OUTSIDE CARTON.  
外箱上贴UL标签.

ITEM	DESCRIPTION	L(MM)	Q'TY
J	Blank label 25.4x36.5mm (WHT:12.7mm)		1
I	20AWG;PLATED;PVC;BN;OD=1.76MM;UL1007		A/R
H	20AWG;PLATED;PVC;GN;OD=1.76MM;UL1007		A/R
G	20AWG;PLATED;PVC;YL;OD=1.76MM;UL1007		A/R
F	20AWG;PLATED;PVC;OR;OD=1.76MM;UL1007		A/R
E	20AWG;PLATED;PVC;RD;OD=1.76MM;UL1007		A/R
D	20AWG;PLATED;PVC;BK;OD=1.76MM;UL1007		A/R
C	MICROFIT TPA DR FOR 6CKT V0		4
B	MicroFit 3.0 F Crp Term Chn Tin 20-24AWG		12
A	MICROFIT TPA DR RCPT HSG 6CKT V0		2

WIRING CHART		
P1	P2	COLOR
1	3	BLACK
2	2	RED
3	1	ORANGE
4	6	YELLOW
5	5	GREEN
6	4	BROWN

<b>QUALITY SYMBOLS</b> ▽A = 0 ▽E = 0 ▽F = 0 ▽ = 0 ▽C = 0 ▽X = 0 ▽ = 0 ▽ = 0	THIS DRAWING CONTAINS INFORMATION THAT IS PROPRIETARY TO MOLEX ELECTRONIC TECHNOLOGIES, LLC AND SHOULD NOT BE USED WITHOUT WRITTEN PERMISSION							
	EC NO: 104565 DRWN: WLXIE CHK'D: YXZOU APPR: YXZOU	2016/04/26 2016/04/26	GENERAL TOLERANCES (UNLESS SPECIFIED) ANGULAR TOL ± ° 4 PLACES ± 3 PLACES ± 2 PLACES ± 1 PLACE ± 0 PLACES ±	DIMENSION UNITS: MM SCALE: NTS DRWN BY: WLXIE DATE: 2016/03/01 CHK'D BY: DHUANG16 DATE: 2016/03/29 APPR BY:				
	DRAFT WHERE APPLICABLE MUST REMAIN WITHIN DIMENSIONS		DRAWING SIZE: A3 THIRD ANGLE PROJECTION	PRODUCT CUSTOMER DRAWING SERIES: 201234 MATERIAL NUMBER: SEE TABLE CUSTOMER: GENERAL MARKET				
	A1		REV:		DOCUMENT NUMBER: 2012341032 DOC TYPE: PSD DOC PART: 000 SHEET NUMBER: 1 OF 1		201234 SEE TABLE GENERAL MARKET	