

Product Summary (Typ. @ $V_{GS} = 4.5V$, $T_A = +25^\circ C$)

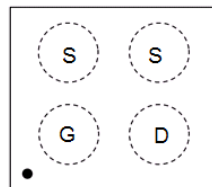
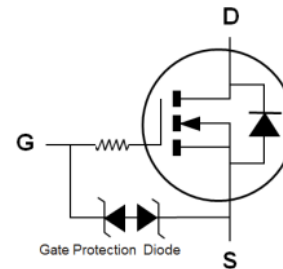
BV_{DSS}	$R_{DS(ON)}$	Q_g	Q_{gd}	I_D
20V	43m Ω	7.4nC	1.5nC	4.0A

Description

This new generation MOSFET has been designed to minimize the on-state resistance ($R_{DS(ON)}$) with thin WLCSP packaging process and yet maintain superior switching performance, making it ideal for high efficiency power management applications.

Applications

- DC-DC Converters
- Battery Management
- Load Switch


 Top-View
Pin Configuration


Equivalent Circuit

Features

- Built-in G-S Protection Diode Against ESD 2kV HBM
- Trench-MOS Technology with The Lowest $R_{DS(ON)}$: $R_{DS(ON)} = 43m\Omega$ to Minimize On-State Losses
- $V_{GS(TH)} = 0.7V$ Typ. for A Low Turn-On Potential
- CSP with Footprint 0.8mm x 0.8mm
- Height = 0.35mm for Low Profile
- **Totally Lead-Free & Fully RoHS Compliant (Notes 1 & 2)**
- **Halogen and Antimony Free. "Green" Device (Note 3)**

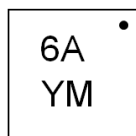
Mechanical Data

- Case: X2-WLB0808-4 (Type B)
- Terminal Connections: See Diagram Below

Ordering Information (Note 4)

Part Number	Case	Packaging
DMN2080UCB4-7	X2-WLB0808-4 (Type B)	3000/Tape & Reel

- Notes:
1. No purposely added lead. Fully EU Directive 2002/95/EC (RoHS) & 2011/65/EU (RoHS 2) compliant.
 2. See http://www.diodes.com/quality/lead_free.html for more information about Diodes Incorporated's definitions of Halogen- and Antimony-free, "Green" and Lead-free.
 3. Halogen- and Antimony-free "Green" products are defined as those which contain <900ppm bromine, <900ppm chlorine (<1500ppm total Br + Cl) and <1000ppm antimony compounds.
 4. For packaging details, go to our website at <https://www.diodes.com/design/support/packaging/diodes-packaging/>.

Marking Information


6A = Product Type Marking Code
 YM = Date Code Marking
 Y or \bar{Y} = Year (ex: E = 2017)
 M or \bar{M} = Month (ex: 9 = September)

Date Code Key

Year	2016	2017	2018	2019	2020	2021	2022
Code	D	E	F	G	H	I	J

Month	Jan	Feb	Mar	Apr	May	Jun	Jul	Aug	Sep	Oct	Nov	Dec
Code	1	2	3	4	5	6	7	8	9	O	N	D

Maximum Ratings

Characteristic	Symbol	Value	Unit	
Drain-Source Voltage	V_{DSS}	20	V	
Gate-Source Voltage	V_{GSS}	± 8	V	
Continuous Source Current @ $V_{GS} = 4.5V$ (Note 5)	I_D	$T_A = +25^\circ C$	3.0	A
		$T_A = +70^\circ C$	2.4	A
Continuous Source Current @ $V_{GS} = 4.5V$ (Note 6)	I_D	$T_A = +25^\circ C$	4.0	A
		$T_A = +70^\circ C$	3.2	A
Pulsed Drain Current (Pulse Duration 10 μs , Duty Cycle $\leq 1\%$)	I_{DM}	8	A	
Continuous Source-Drain Diode Current	I_S	0.74	A	
Pulse Diode Forward Current	I_{SM}	15	A	

Thermal Characteristics

Characteristic	Symbol	Value	Unit
Total Power Dissipation (Note 5)	P_D	0.71	W
Thermal Resistance, Junction to Ambient (Note 5)	$R_{\theta JA}$	176	$^\circ C/W$
Total Power Dissipation (Note 6)	P_D	1.25	W
Thermal Resistance, Junction to Ambient (Note 6)	$R_{\theta JA}$	99	$^\circ C/W$
Operating and Storage Temperature Range	T_J, T_{STG}	-55 to +150	$^\circ C$

Electrical Characteristics (@ $T_A = +25^\circ C$, unless otherwise specified.)

Characteristic	Symbol	Min	Typ	Max	Unit	Test Condition
OFF CHARACTERISTICS (Note 7)						
Drain-Source Breakdown Voltage	BV_{DSS}	20	-	-	V	$V_{GS} = 0V, I_D = 250\mu A$
Zero Gate Voltage Drain Current	I_{DSS}	-	-	1.0	μA	$V_{DS} = 20V, V_{GS} = 0V$
Gate-Body Leakage	I_{GSS}	-	-	± 0.5	μA	$V_{GS} = \pm 4.5V, V_{DS} = 0V$
		-	-	± 6		$V_{GS} = \pm 8V, V_{DS} = 0V$
ON CHARACTERISTICS (Note 7)						
Gate Threshold Voltage	$V_{GS(TH)}$	0.4	0.7	1	V	$V_{DS} = V_{GS}, I_D = 250\mu A$
Static Drain-Source On-Resistance	$R_{DS(ON)}$	-	43	56	$m\Omega$	$V_{GS} = 4.5V, I_D = 1.0A$
		-	49	68		$V_{GS} = 2.5V, I_D = 1.0A$
		-	60	90		$V_{GS} = 1.8V, I_D = 1.0A$
		-	72	115		$V_{GS} = 1.5V, I_D = 0.5A$
Forward Transfer Admittance	$ Y_{fs} $	-	4	-	S	$V_{DS} = 10V, I_S = 1.0A$
Body Diode Forward Voltage	V_{SD}	-	0.7	1.2	V	$V_{GS} = 0V, I_S = 1.0A$
DYNAMIC CHARACTERISTICS (Note 8)						
Input Capacitance	C_{iss}	-	540	-	pF	$V_{DS} = 10V, V_{GS} = 0V,$ $f = 1.0MHz$
Output Capacitance	C_{oss}	-	70	-	pF	
Reverse Transfer Capacitance	C_{rss}	-	33	-	pF	
Gate Resistance	R_g	-	1	-	k Ω	$V_{DS} = 0V, V_{GS} = 0V, f = 1MHz$
Total Gate Charge	Q_g	-	7.4	-	nC	$V_{GS} = 4.5V, V_{DS} = 10V,$ $I_D = 1.0A$
Gate-Source Charge	Q_{gs}	-	0.8	-	nC	
Gate-Drain Charge	Q_{gd}	-	1.5	-	nC	
Turn-On Delay Time	$t_{D(ON)}$	-	152	-	ns	$V_{DD} = 10V, I_D = 1.0A$ $V_{GEN} = 4.5V, R_G = 1\Omega, R_L = 10\Omega$
Turn-On Rise Time	t_R	-	268	-	ns	
Turn-Off Delay Time	$t_{D(OFF)}$	-	1245	-	ns	
Turn-Off Fall Time	t_F	-	816	-	ns	
Reverse Recovery Charge	Q_{RR}	-	13	-	nC	$I_F = 1A, di/dt = 100A/\mu s$
Body Diode Reverse Recovery Time	t_{RR}	-	5	-	ns	

- Notes:
- Device mounted on FR-4 substrate PC board, 2oz copper, with minimum recommended pad layout.
 - Device mounted on FR-4 substrate PC board, 2oz copper, with 1inch square copper plate.
 - Short duration pulse test used to minimize self-heating effect.
 - Guaranteed by design. Not subject to production testing.

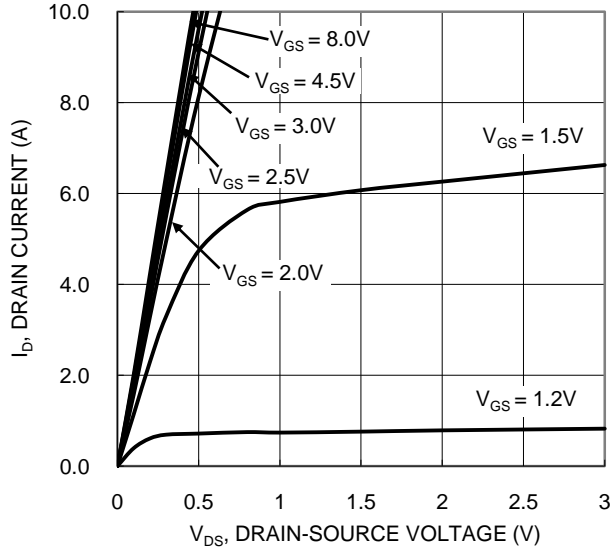


Figure 1. Typical Output Characteristic

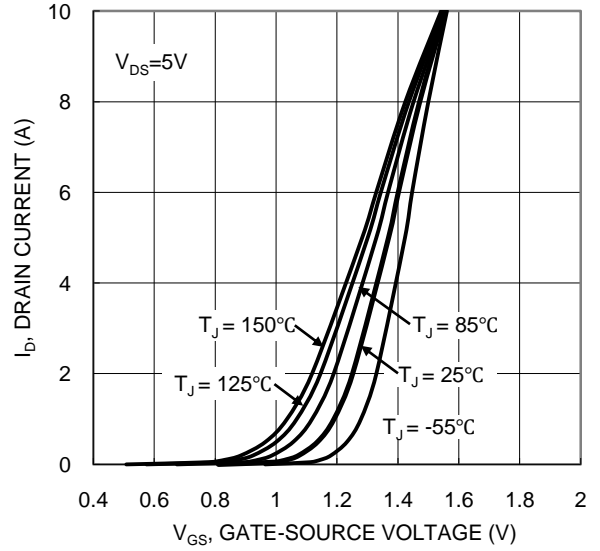


Figure 2. Typical Transfer Characteristic

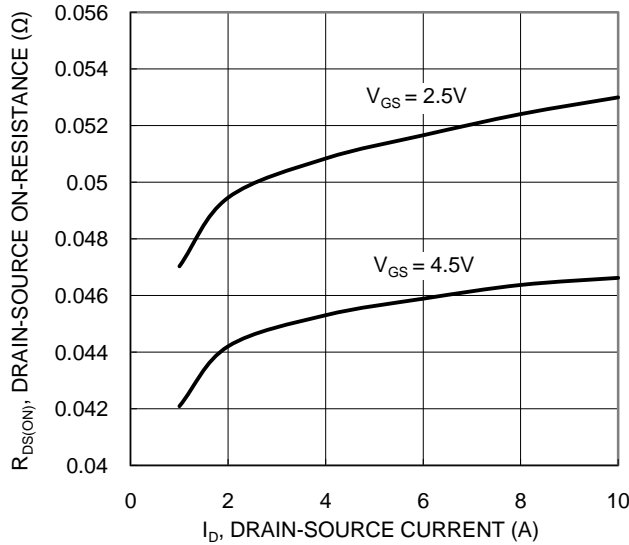


Figure 3. Typical On-Resistance vs. Drain Current and Gate Voltage

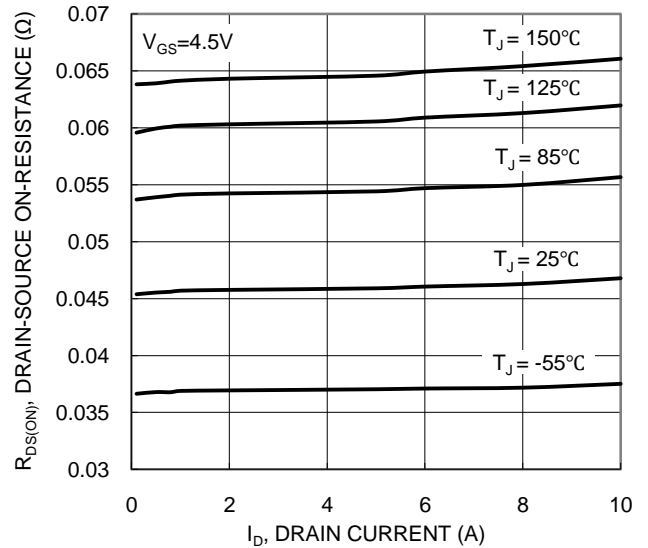


Figure 4. Typical On-Resistance vs. Drain Current and Junction Temperature

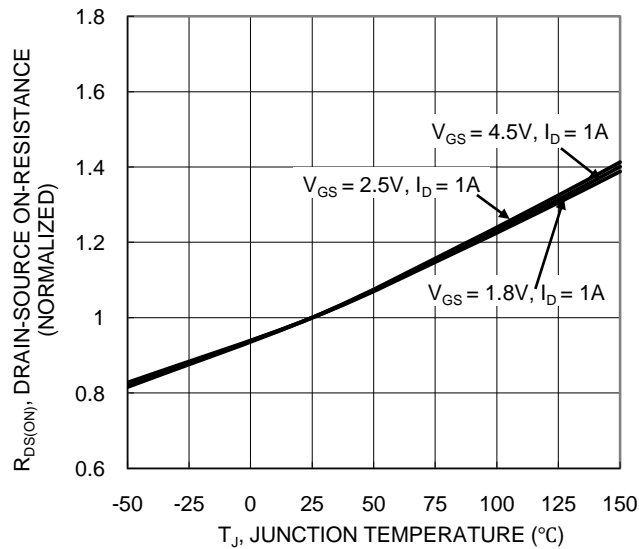


Figure 5. On-Resistance Variation with Junction Temperature

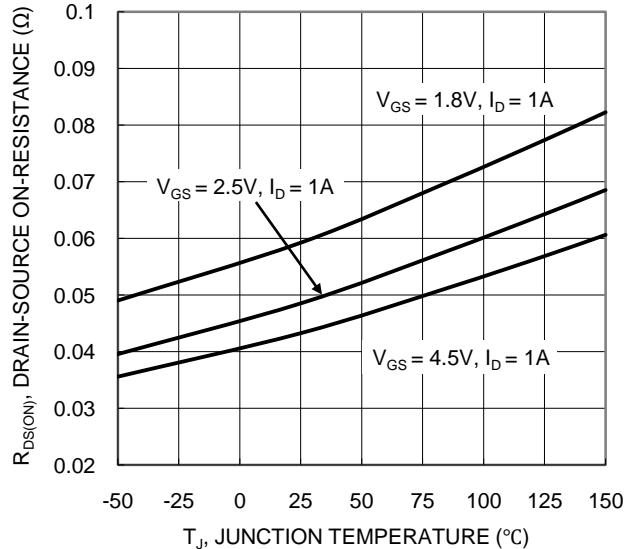


Figure 6. On-Resistance Variation with Junction Temperature

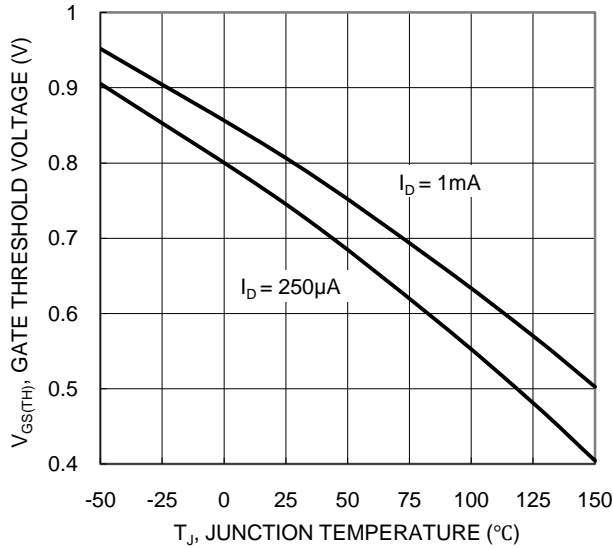


Figure 7. Gate Threshold Variation vs. Junction Temperature

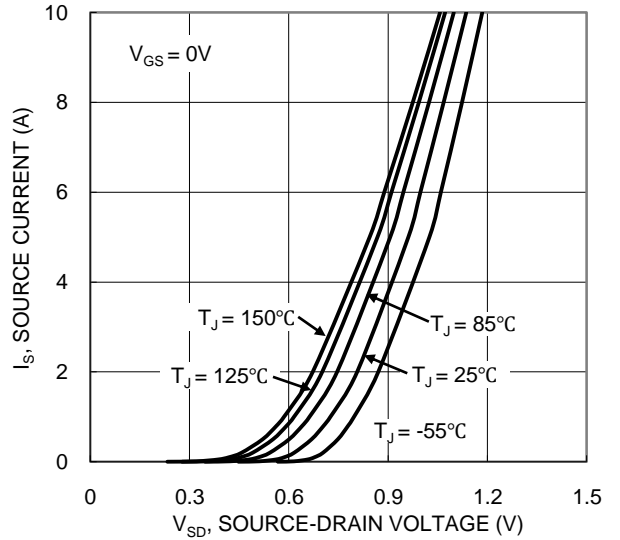


Figure 8. Diode Forward Voltage vs. Current

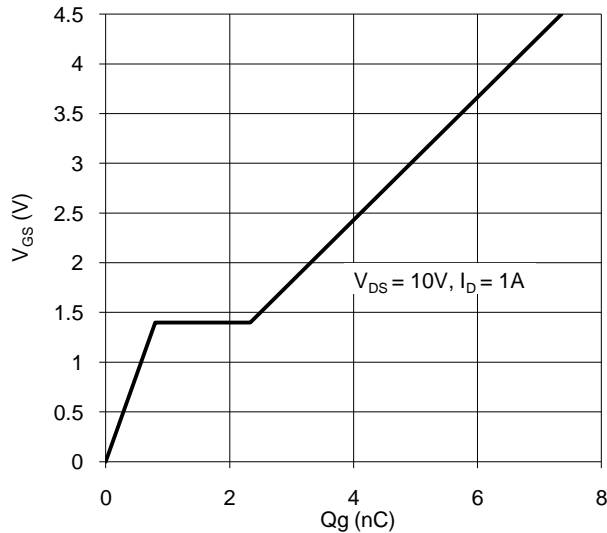


Figure 9. Gate Charge

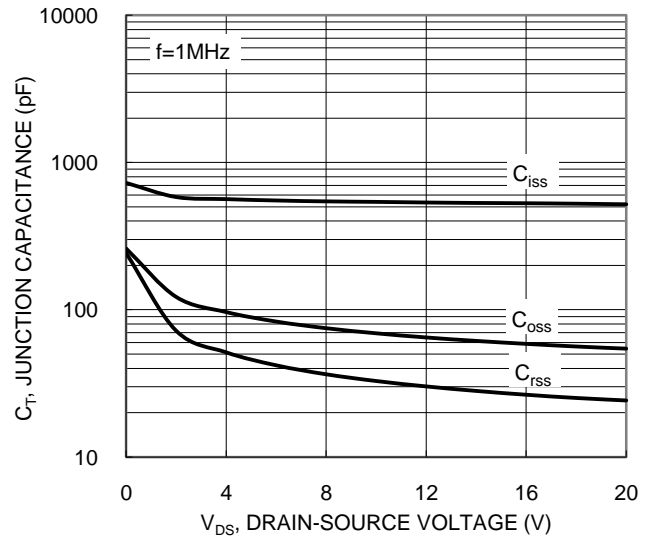


Figure 10. Typical Junction Capacitance

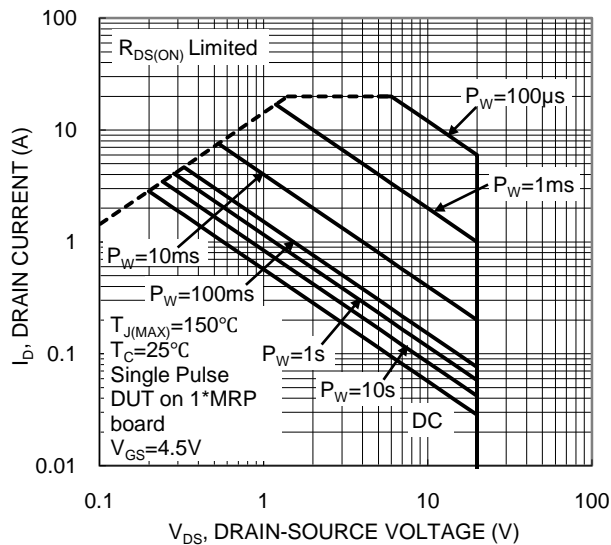


Figure 11. SOA, Safe Operation Area

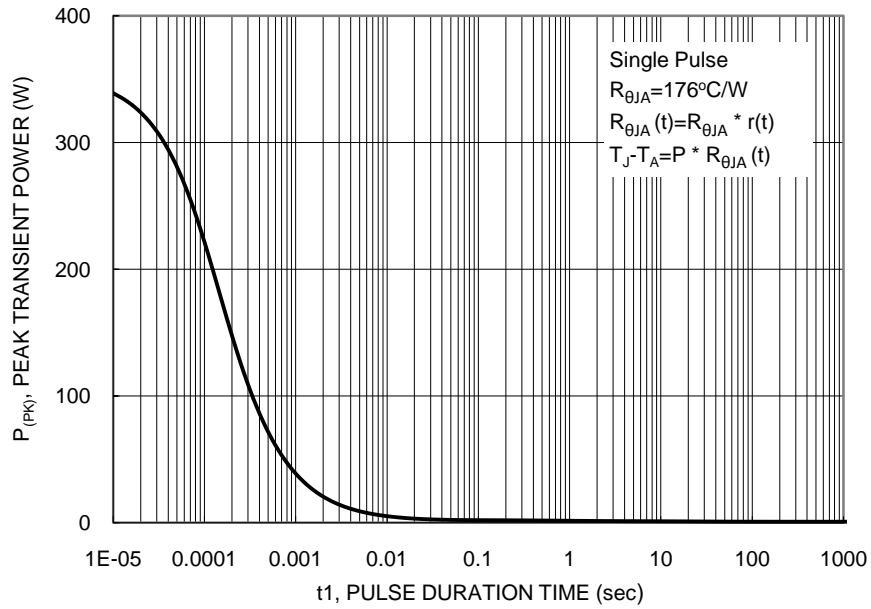


Figure 12. Single Pulse Maximum Power Dissipation

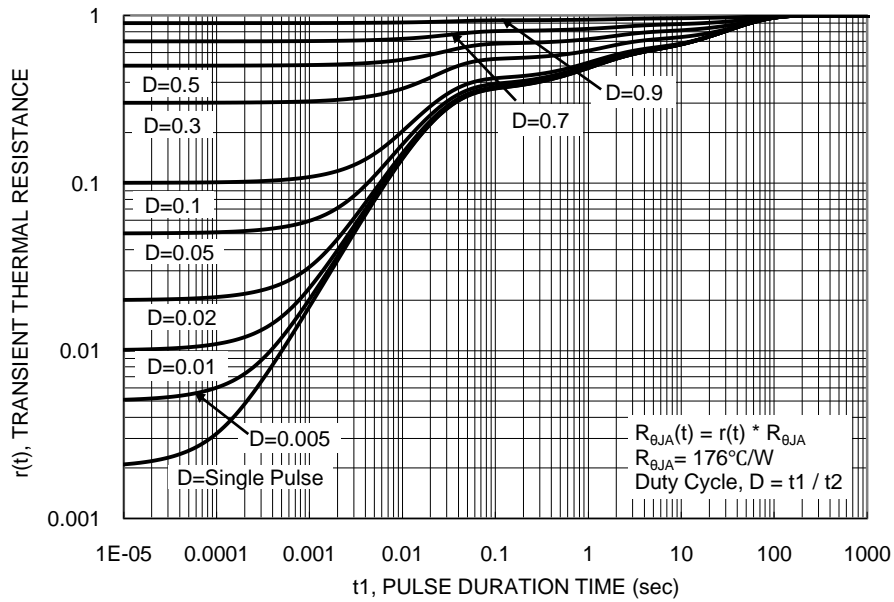
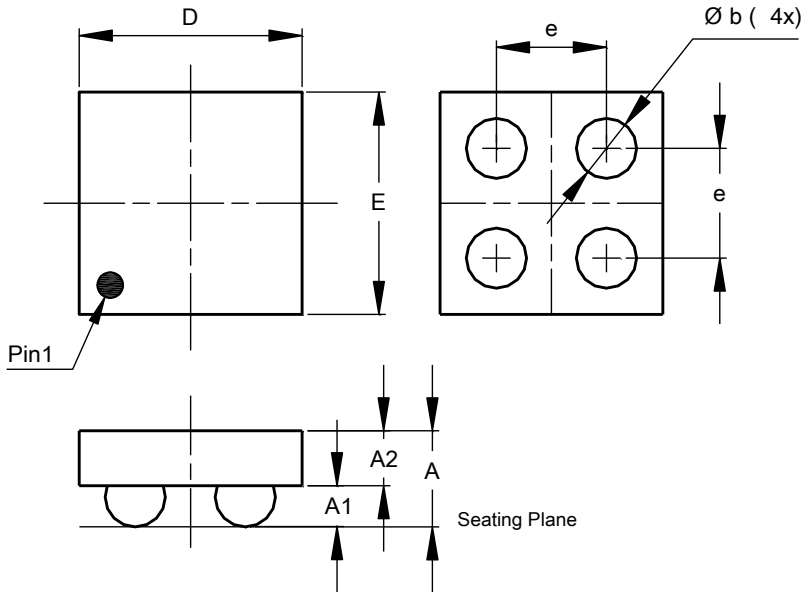


Figure 13. Transient Thermal Resistance

Package Outline Dimensions

Please see <http://www.diodes.com/package-outlines.html> for the latest version.

X2-WLB0808-4 (Type B)

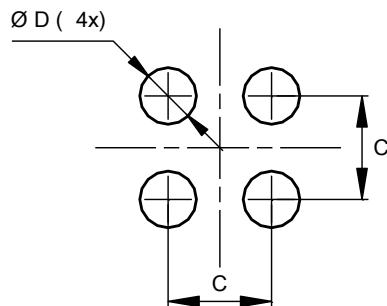


X2-WLB0808-4 (Type B)			
Dim	Min	Max	Typ
A	0.3100	0.3900	0.3500
A1	0.1350	0.1650	0.1500
A2	0.1750	0.2250	0.2000
b	0.1971	0.2409	0.2190
D	0.7900	0.8300	0.8100
E	0.7900	0.8300	0.8100
e	-	-	0.400
All Dimensions in mm			

Suggested Pad Layout

Please see <http://www.diodes.com/package-outlines.html> for the latest version.

X2-WLB0808-4 (Type B)



Dimensions	Value (in mm)
C	0.400
D	0.219

IMPORTANT NOTICE

DIODES INCORPORATED MAKES NO WARRANTY OF ANY KIND, EXPRESS OR IMPLIED, WITH REGARDS TO THIS DOCUMENT, INCLUDING, BUT NOT LIMITED TO, THE IMPLIED WARRANTIES OF MERCHANTABILITY AND FITNESS FOR A PARTICULAR PURPOSE (AND THEIR EQUIVALENTS UNDER THE LAWS OF ANY JURISDICTION).

Diodes Incorporated and its subsidiaries reserve the right to make modifications, enhancements, improvements, corrections or other changes without further notice to this document and any product described herein. Diodes Incorporated does not assume any liability arising out of the application or use of this document or any product described herein; neither does Diodes Incorporated convey any license under its patent or trademark rights, nor the rights of others. Any Customer or user of this document or products described herein in such applications shall assume all risks of such use and will agree to hold Diodes Incorporated and all the companies whose products are represented on Diodes Incorporated website, harmless against all damages.

Diodes Incorporated does not warrant or accept any liability whatsoever in respect of any products purchased through unauthorized sales channel. Should Customers purchase or use Diodes Incorporated products for any unintended or unauthorized application, Customers shall indemnify and hold Diodes Incorporated and its representatives harmless against all claims, damages, expenses, and attorney fees arising out of, directly or indirectly, any claim of personal injury or death associated with such unintended or unauthorized application.

Products described herein may be covered by one or more United States, international or foreign patents pending. Product names and markings noted herein may also be covered by one or more United States, international or foreign trademarks.

This document is written in English but may be translated into multiple languages for reference. Only the English version of this document is the final and determinative format released by Diodes Incorporated.

LIFE SUPPORT

Diodes Incorporated products are specifically not authorized for use as critical components in life support devices or systems without the express written approval of the Chief Executive Officer of Diodes Incorporated. As used herein:

A. Life support devices or systems are devices or systems which:

1. are intended to implant into the body, or
2. support or sustain life and whose failure to perform when properly used in accordance with instructions for use provided in the labeling can be reasonably expected to result in significant injury to the user.

B. A critical component is any component in a life support device or system whose failure to perform can be reasonably expected to cause the failure of the life support device or to affect its safety or effectiveness.

Customers represent that they have all necessary expertise in the safety and regulatory ramifications of their life support devices or systems, and acknowledge and agree that they are solely responsible for all legal, regulatory and safety-related requirements concerning their products and any use of Diodes Incorporated products in such safety-critical, life support devices or systems, notwithstanding any devices- or systems-related information or support that may be provided by Diodes Incorporated. Further, Customers must fully indemnify Diodes Incorporated and its representatives against any damages arising out of the use of Diodes Incorporated products in such safety-critical, life support devices or systems.

Copyright © 2017, Diodes Incorporated

www.diodes.com