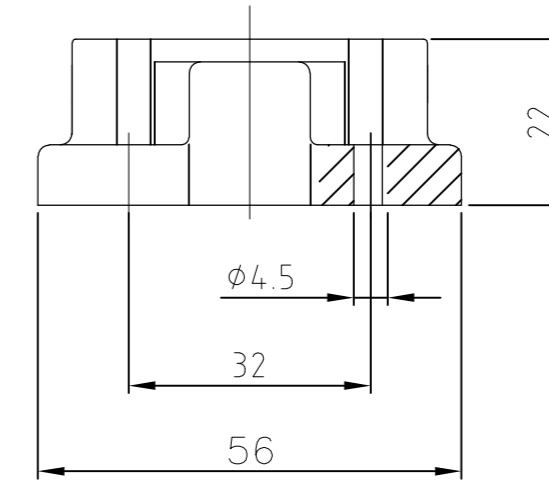
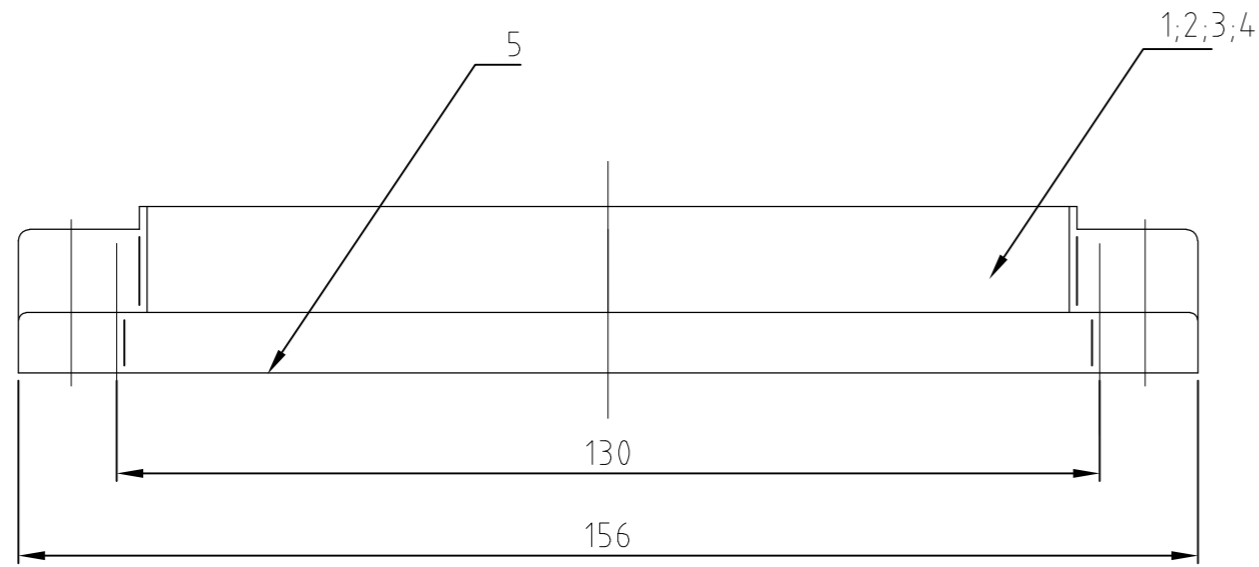
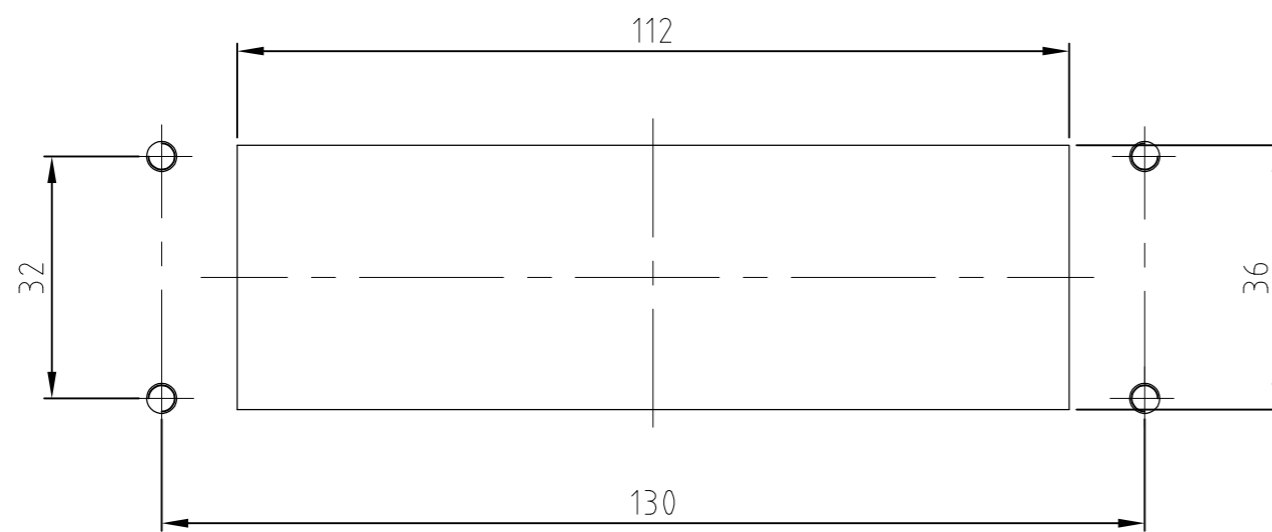


THIS DRAWING IS UNPUBLISHED. RELEASED FOR PUBLICATION
 © COPYRIGHT BY TYCO ELECTRONICS CORPORATION. ALL INTERNATIONAL RIGHTS RESERVED.

LOC		DIST		REVISIONS			
P	LTR	DESCRIPTION	DATE	DWN	APVD		
A3		new index ECR-08-001603	11.03.02	SR	SM		
A4		REVISED PER ECO-11-002591	15FEB11	HMR	MM		



Panel Cut Out



- Notes:
- ① Material: Housing: aluminium diecasting alloy
Seals: Neoprene conductive
 - ② Surface: Varnisch- grey
yellow chromium plated +
Varnisch black
 - ③ Varnisch on the inside not necessarily

- Bemerkungen:
- ① Material: Gehäuse: Alu-Druckguß-Legierung
Dichtungen: Neoprene leitfähig
 - ② Oberfläche: Lackierung - grau
gelb chromatiert +
Lackierung schwarz
 - ③ Lackierung im Gehäuseinnere ist nicht notwendig

QTY	DESCRIPTION / BENENNUNG	MATERIAL	SURFACE/OBERFLÄCHE	COLOR/FARBE	ITEM NO.	REMARKS / BEMERKUNGEN
1	0-Ring Bg8	Neoprene	-	black/schwarz	5	Conductive
1	Bulkhead housing EMV-K Bg8	Aluminium/Alu	yellow chromated	black/schwarz	4	
-	Bulkhead housing EMV Bg8	Aluminium/Alu	-	grey/grau	3	
-	Bulkhead housing EMV Bg8	Aluminium/Alu	-	unvarnished	2	
-	Bulkhead housing EMV Bg8	Aluminium/Alu	-	white aluminum	1	

EMV-K24/64-AG EMV-24/64-AG EMV-24/64-AG EMV-24/64-AG	ORDERING TEXT/BESTELLTEXT	THIS DRAWING IS A CONTROLLED DOCUMENT.		DWN	Schneider	01.08.2000	Tyco Electronics Corporation Harrisburg, Pa 17105-3608				
		DIMENSIONS: mm		CHK	Schweiger	01.08.2000		NAME			
		TOLERANCES UNLESS OTHERWISE SPECIFIED: n. ISO 2768 - mH - E DIN 16901 - 140		APVD	-	PRODUCT SPEC		-	Surface mounted housing bottom entry EMV Anbaugehäuse EMV.24/64-AG		
		MATERIAL		APPLICATION SPEC	-	SIZE		A2	CAGE CODE	00779	DRAWING NO
FINISH		WEIGHT	-	CUSTOMER DRAWING	SCALE	1:1	SHEET	1 of 1	REV	A4	