

1. Installation of the USB Driver

Unzip the following file.

“soft\_soft\_wb2f\_usb\_setup\_001-000-00-a.zip”

Install the USB driver with reference to “readme\_en.txt” in the created folder “soft\_soft\_wb2f\_usb\_setup\_001-000-00-a”.

2. Installation of the Support Tool

Unzip the following file.

“soft\_soft\_wb2f\_support\_tool\_001-000-00-a.zip”

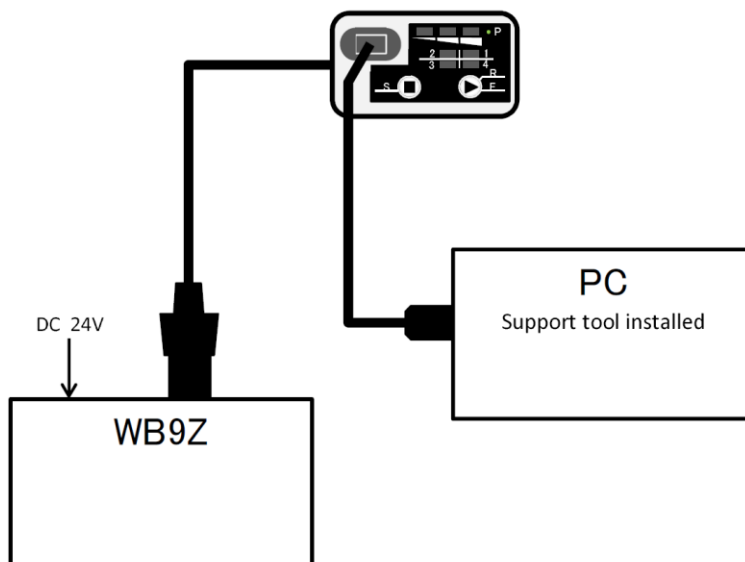
Created the following folders and files.

- 
- ¥bin
    - ¥application
      - WB2F\_M-APP\_001\_010\_00.mot ; Latest F/W
    - ¥pboot
      - WB2F\_PBOOT\_001\_000\_00.mot
  - ¥ device\_setting
  - ¥ gra\_mng
  - ¥ manual
  - ¥ monitor
  - ¥ temp
  - ¥ tool\_setting
  - dat\_wb2f.bin
  - keyfile.bin
  - MySetting.config
  - wb2f\_support\_tool.exe ; Executable file of WB2F Support Tool
- 

3. Wiring

Connect the USB Auxiliary Port of WB2F to the PC.

As the Support Tool displays images, WB2F communicates with USB.



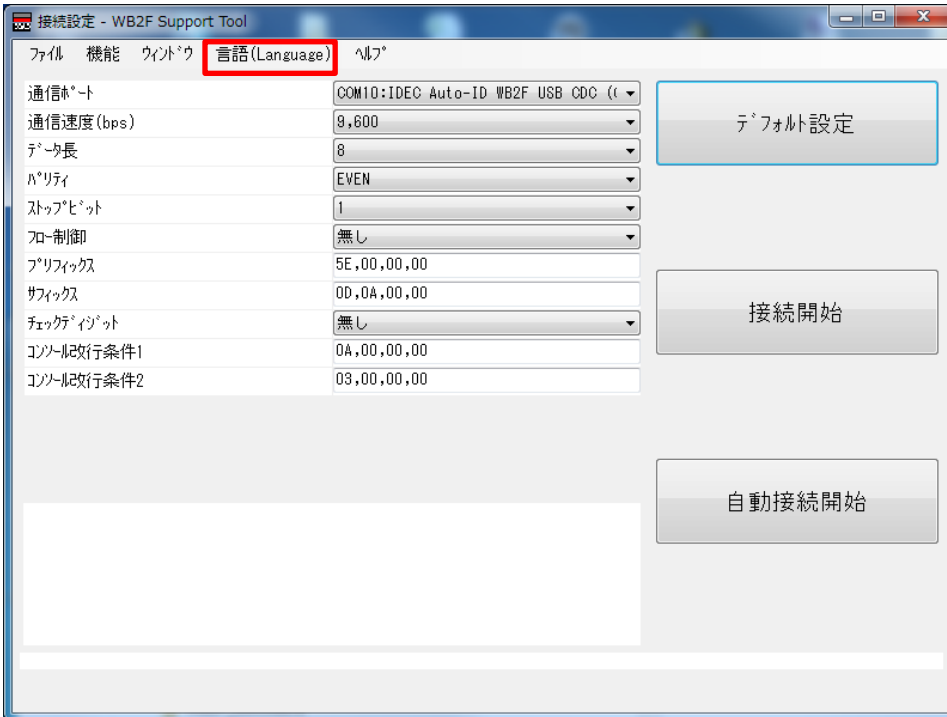
#### 4. Starting the Support Tool and updating F/W

##### 4-1. Start the Support Tool and

Execute the Support Tool executable file "wb2f\_support\_tool.exe".

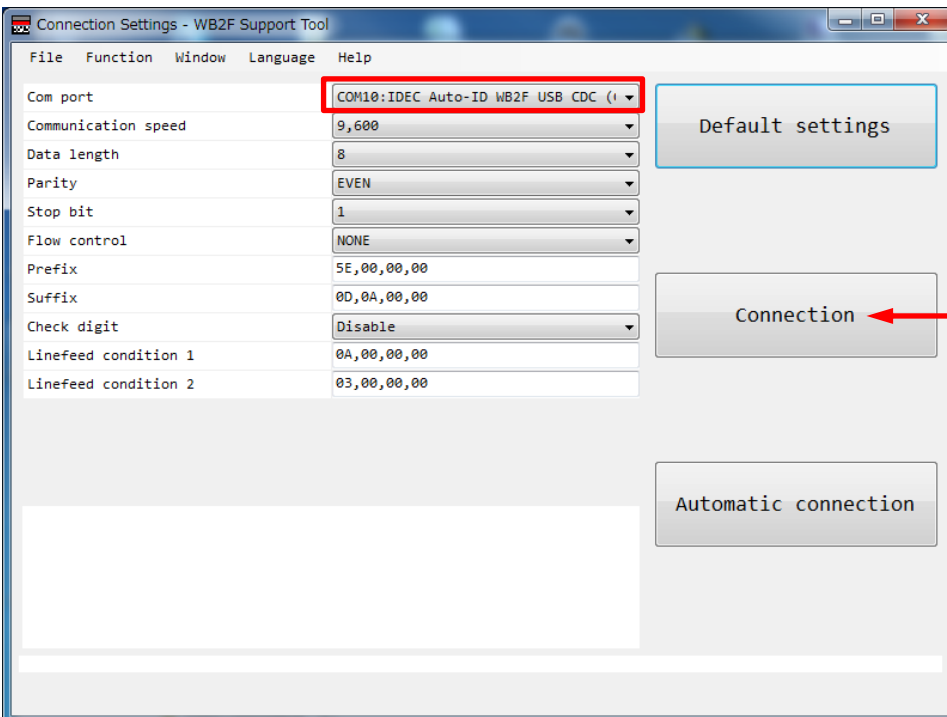
If this software is opened for the first time, it will start in Japanese mode.

You can choose to select the language before connecting the communication



The communication settings screen is displayed on the first screen.

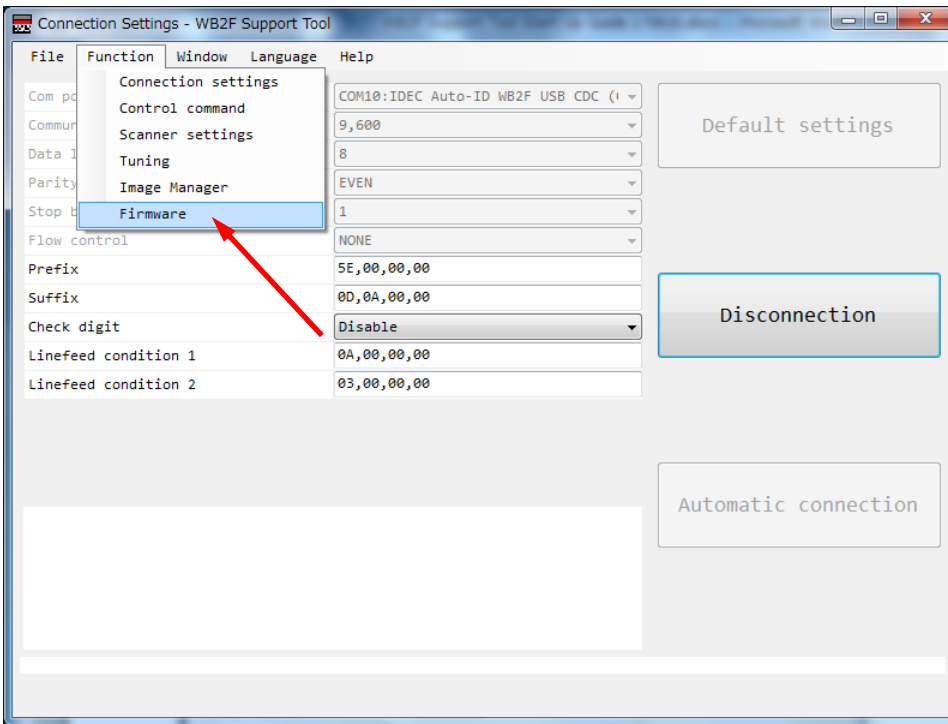
Select "IDEC Auto-ID WB2F CDC" for the Com port and click "Connection".



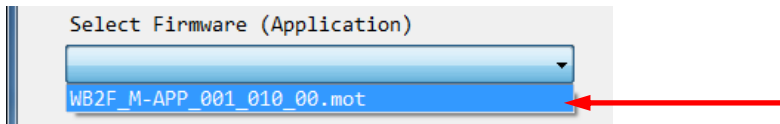
As popup is displayed when connection succeeds, please click "OK".

## 4-2. Update the F/W

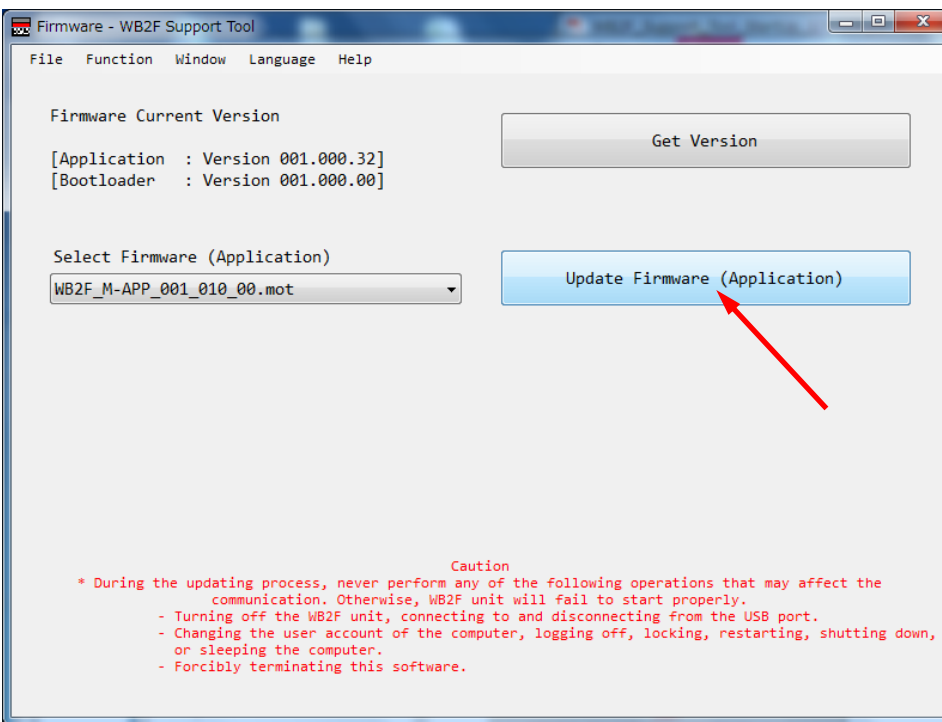
Choose "Function" > "Firmware"



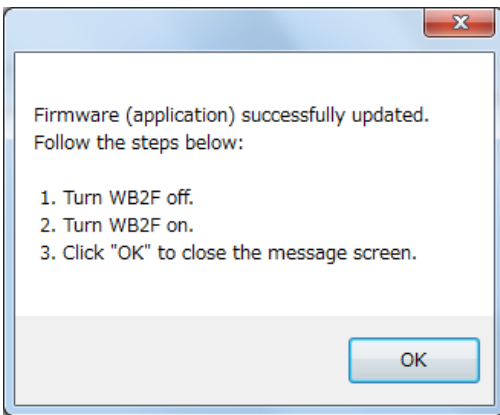
Choose the following file in the pulldown menu of Select Firmware (Application)



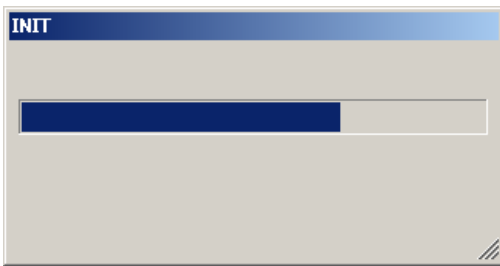
Start update by click the bottom of "Update Firmware (Application)"



The following popup will be displayed when the update is over.  
Turn off the power of the WB2F once before pressing the OK button.



When you press the OK button, initialization of WB2F will start and the following will be displayed.  
Firmware update is completed when the following display disappears



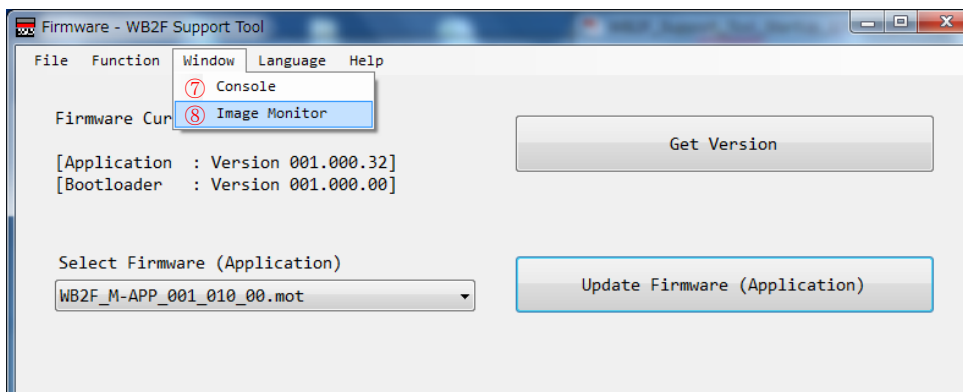
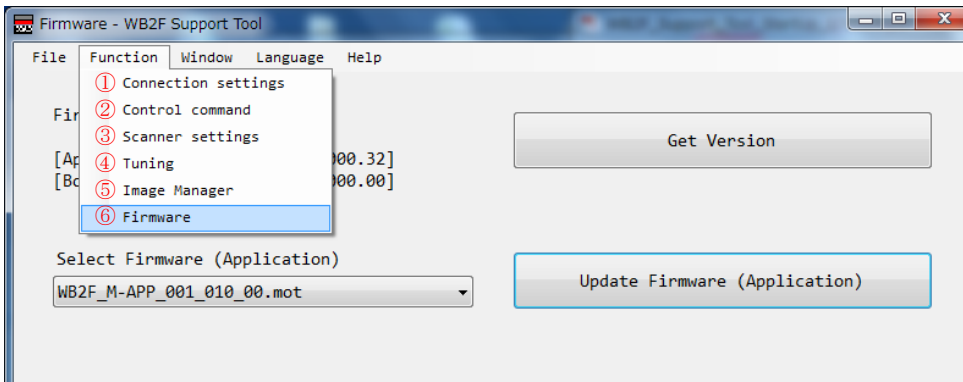
## 5. Configuration

Select the required items from the pull-down menu and set up.

The main setting items are as follows.

Refer to the WB2F support tool user's manual for detail operation.

“WB2F Support Tool\_en\_final2.pdf” (Preliminary)



- ① Connection setting  
Configure RS232C.
- ② Control command  
Representative control command buttons are located. You can check the operation.
- ③ Change setting  
Set various parameters.
- ④ Tuning  
Automatically sets the reading parameter of WB2F to the optimum value.
- ⑤ Image management  
WB2F has image saving function. It manages the saved image.
- ⑥ Firmware  
Update the firmware of WB2F.
- ⑦ Console  
The console screen opens.  
Commands and data can be monitored and commands can be entered manually.
- ⑧ Image monitor  
The image monitor screen opens.  
You can check the effect setting while watching the image.