

2

1

DWG. NO.  
S100057

CIRCUIT	USE	MAXIMUM CURRENT (AMP)	MAXIMUM VOLTAGE (VAC)	MAXIMUM WIRE Ø (mm)
2,4	POWER	44	600	6.3
1,3,5	SIGNAL	13	250	3.3

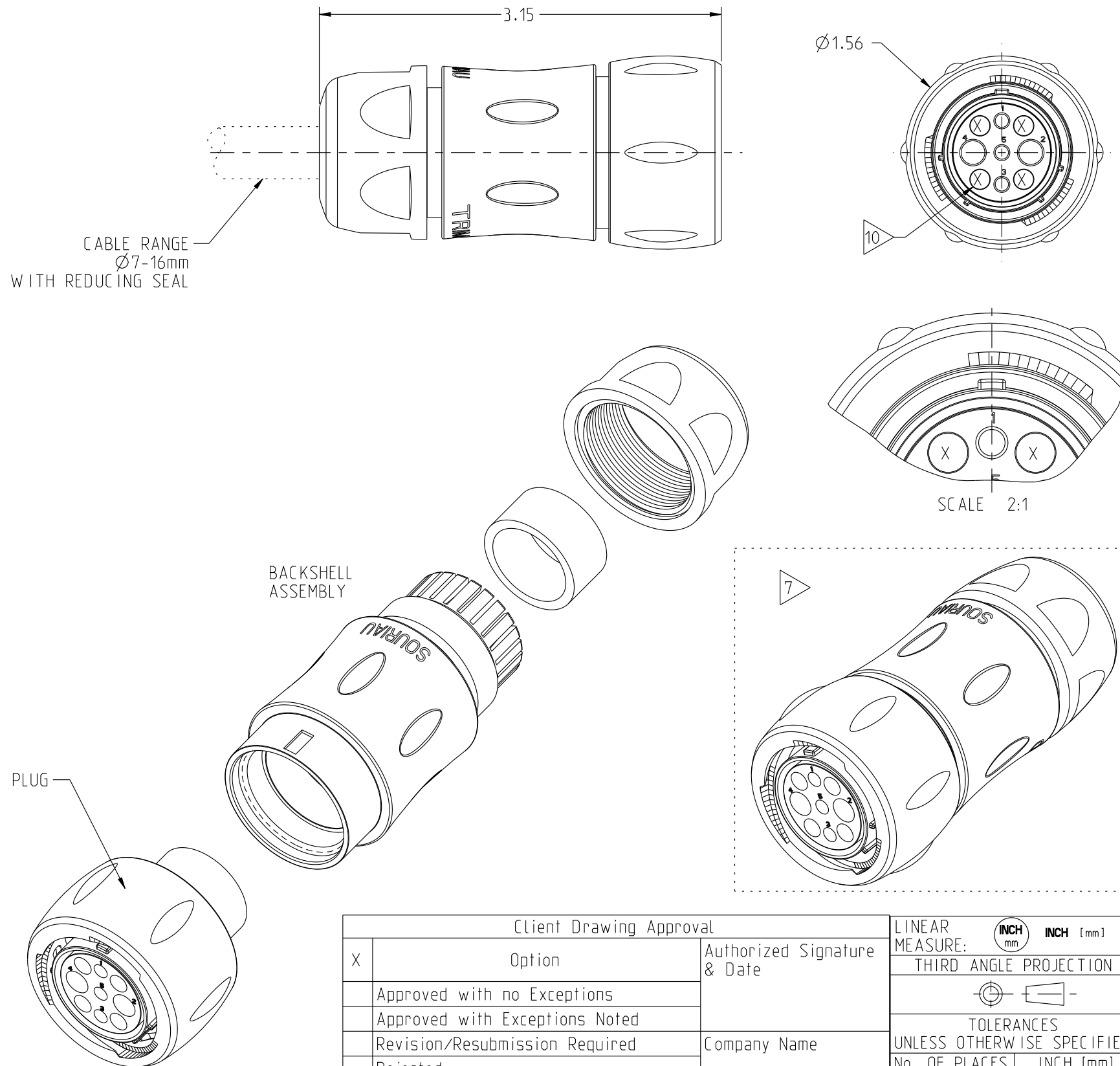
NOTES:

- MATES WITH UTS7\_\_18X2M3P.
- CIRCUITS 2 & 4 USE Ø3.6mm TRIM TRIO SOCKET CONTACTS ORDERED SEPARATELY.
- CIRCUITS 1, 3, AND 5 USE Ø1.6mm TRIM TRIO SOCKET CONTACTS ORDERED SEPARATELY.
- MATERIALS: ALL RoHS COMPLIANT
  - PLUG: COUPLING AND INSULATOR: POLYAMIDE UL94V0, COLOR-BLACK.
  - BACKSHELL: POLYAMIDE UL94V0, COLOR-BLACK.
- MECHANICAL / ENVIRONMENTAL PERFORMANCE
  - OPERATING TEMPERATURE: -40° TO +105°C.
  - CORROSION: SALT SPRAY, 500 HOURS.
  - DURABILITY: 250 MATE-UNMATE CYCLES.
  - VIBRATION: SINUSOIDAL PER CEI 60512-4; 10-T0-2,000 Hz.
  - THERMAL SHOCK: 5 CYCLES X 30-MINUTES: -40° TO +105°C.
  - SEALING IN MATED CONDITION: IEC 60529-IP68: 10M WATER, 1-WEEK; DYNAMIC-IP69K: HIGH-PRESSURE WATER, DIN 40050.
- ELECTRICAL PERFORMANCE: DIELECTRIC WITHSTANDING VOLTAGE / INSULATION RESISTANCE
  - 2200 VRMS MAX. BETWEEN CIRCUITS 2,4 / 5000 M Ohm MIN. @ 500 VDC.
  - 1500 VRMS MAX. BETWEEN CIRCUITS 1,3,5 / 5000 M Ohm MIN. @ 500 VDC.
- PACKAGING: SOURIAU LABEL INCLUDES PART NO.,QTY. & UL INFORMATION.
- UL 1977 RECOGNIZED
- U.S. PATENT 7,955,125.
- MOLDING VOID CORES ARE INDICATED "X".

THIS DRAWING IS A CONTROLLED DOCUMENT FOR SOURIAU USA, INC. IT IS SUBJECT TO CHANGE WITHOUT NOTIFICATION. CONTACT THE DOCUMENT CONTROL CENTER FOR THE LATEST REVISION.

THE INFORMATION CONTAINED IN THIS DRAWING IS CONFIDENTIAL AND MAY NOT BE DISCLOSED WITHOUT WRITTEN CONSENT FROM SOURIAU USA, INC.

FP9930



B

A

A	RELEASED PER ECN 11932	RSK 03-12-13	NPP 03-12-13
REV	DESCRIPTION	BY DATE	CHKD DATE

DRAWING TITLE

**UTS CABLE PLUG, SIZE-18, SOCKET, 2X#8, 3X#16**

CAT NO.

**UTS6JC18X2M3S**

CAGE NO: 09922

SIZE: B

**CUSTOMER**

**SOURIAU**

INTERPRET THIS DRAWING IN ACCORDANCE WITH ASME Y14.5M - 1994.

www.souriau.com

APPROVAL	DRAWN: RSK	03-06-13
	CHKD : NPP	03-06-13
	DSGN : NPP	03-06-13
	MFG : DH	03-06-13
	QC : BB	03-06-13
DRAWING SCALE: 1:1		
DRAWING NO.		REV
S100057		A
1 OF 1		

Client Drawing Approval		Authorized Signature & Date
X	Option	
	Approved with no Exceptions	
	Approved with Exceptions Noted	
	Revision/Resubmission Required	Company Name
	Rejected	
The signature above indicates the client's authorized representative has reviewed, understands, and concurs with the requirements defined herein. If no signature is provided, placement of a purchase order by the client is considered drawing acceptance.		

LINEAR MEASURE:	
THIRD ANGLE PROJECTION	
TOLERANCES UNLESS OTHERWISE SPECIFIED	
No. OF PLACES	INCH [mm]
ONE PLACE	±.1 [±3]
TWO PLACES	±0.02 [±.5]
THREE PLACES	±0.010 [±.25]
ANGLES ±1°	

2

1

PRO-E