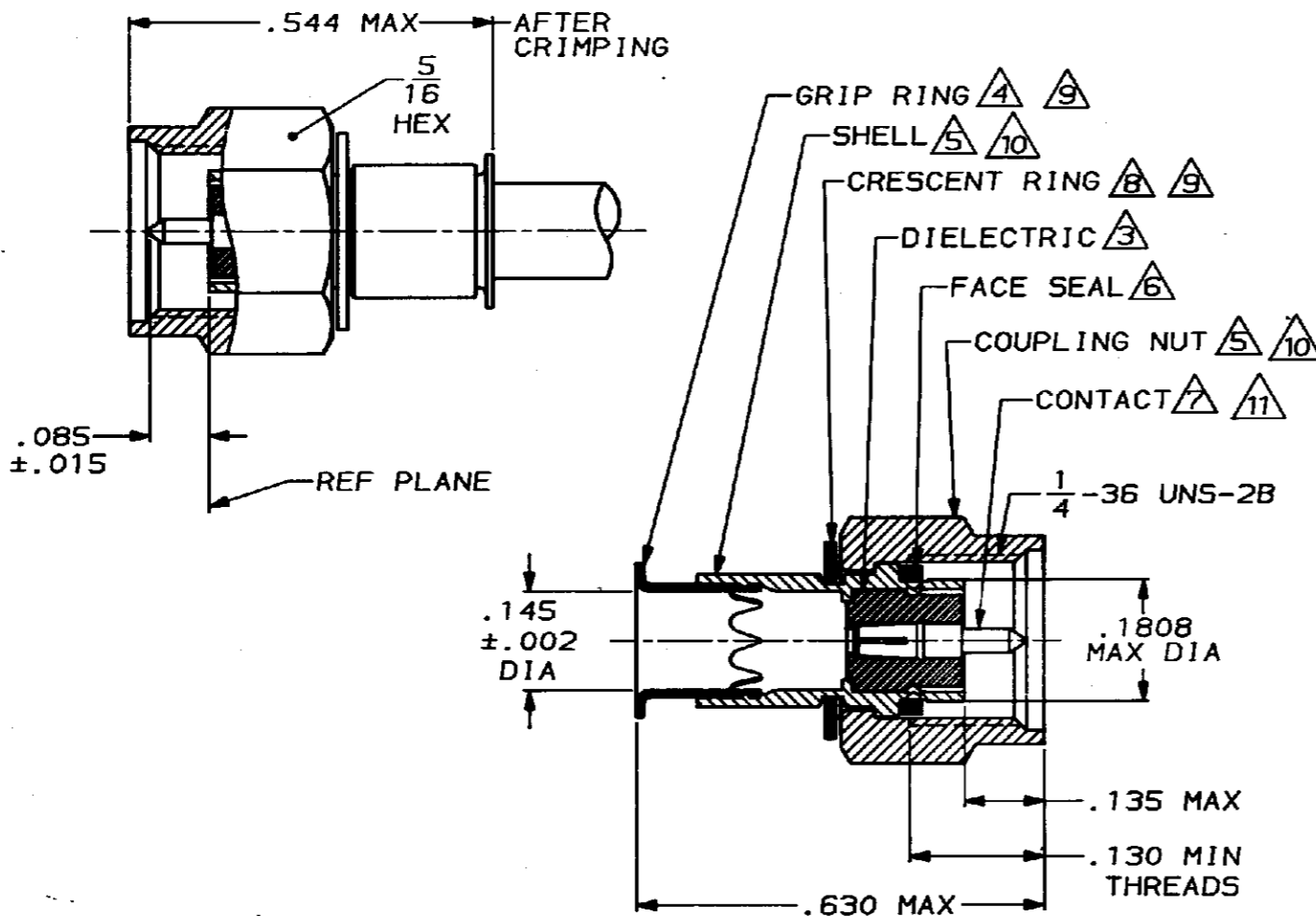


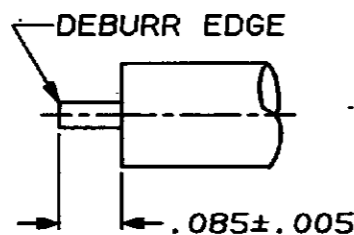
DRAWING MADE IN THIRD ANGLE PROJECTION

THIS DRAWING IS UNPUBLISHED. RELEASED FOR PUBLICATION ,19  
 © COPYRIGHT 19 BY AMP INCORPORATED, HARRISBURG, PA. ALL INTERNATIONAL RIGHTS RESERVED. AMP PRODUCTS MAY BE COVERED BY U.S. AND FOREIGN PATENTS AND/OR PATENTS PENDING.

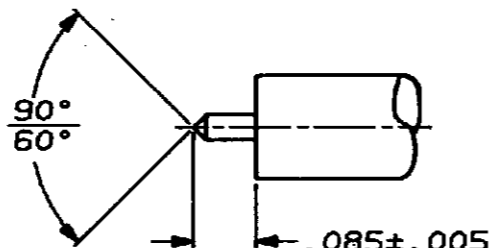
| MOD | LOC | DIST | REVISIONS |     |                         |         |          |
|-----|-----|------|-----------|-----|-------------------------|---------|----------|
| 9   | AJ  | 16   | ZONE      | LTR | DESCRIPTION             | DATE    | APPROVED |
|     |     |      | B         |     | REDWN & REV PER AJ-2377 | 7/16/87 | RK/mS    |



1. FOR USE WITH: RG-402/U, .141 SEMI RIGID CABLE
2. SEE I.S. 6788
3. PTFE PER MIL-P-19468
4. BRASS PER MIL-C-50
5. STAINLESS STEEL PER ASTM-A-582
6. SILICONE RUBBER PER ZZ-R-765
7. BERYLLIUM COPPER PER QQ-C-530
8. BERYLLIUM COPPER, ALLOY #25
9. NICKEL PL PER QQ-N-290
10. PASSIVATED PER QQ-P-35
11. GOLD PL PER MIL-G-45204
12. 00779 M39012/79-3308
13. .500 MIN LENGTH OF STRAIGHT CABLE REQUIRED TO APPLY THE CONNECTOR



OPTIONAL STRIP LENGTH



RECOMMENDED STRIP LENGTH

UNLESS OTHERWISE SPECIFIED DIMENSIONS ARE IN INCHES TOLERANCES ON:  
 2 PL DEC ± \_\_\_\_\_  
 3 PL DEC ± \_\_\_\_\_  
 ANGLES ± \_\_\_\_\_

MATERIAL  
 3 THRU 7

FINISH  
 9 THRU 11

DR: *[Signature]* 7-16-87  
 CHK: *[Signature]* 7/16/87  
 APPD: *[Signature]* 7/16/87  
 PRODUCT SPEC: 108-12055  
 APPLICATION SPEC: \_\_\_\_\_  
 WEIGHT: \_\_\_\_\_

|   |                  |                        |
|---|------------------|------------------------|
| 228634-1                                  |                  |                        |
| PART NO                                   |                  |                        |
| AMP INCORPORATED<br>Harrisburg, Pa. 17105 |                  |                        |
| NAME<br>PLUG, MIL-F, SERIES SMA           |                  |                        |
| SIZE<br>B                                 | FSCN NO<br>00779 | DRAWING NO<br>228634-1 |
| SCALE<br>5:1                              | SHEET<br>1 OF 1  |                        |