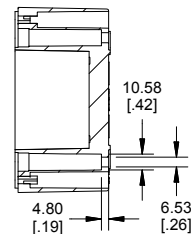


DRAWINGS AVAILABLE FOR STEEL INNER PANEL



UL US LISTED
FILE #E65324
NEMA 4, 4X, 6, 6P

Enclosures can be Factory Modified (Milling, Drilling, Printing etc.)
Contact Factory mjm@hammondmfg.com for quotes
Solid models of this enclosure available in STEP or IGES.
(Part number and text placement/orientation on our products are subject to change, we do not recommend using them as a locating reference for modification purposes)

NOTE	
Purchased assembly includes box, lid, silicone gasket, 4 cover screws and 5 ground screws with washers. Box and lid are made from Diecast Aluminum Alloy.	
Recommended cover screw Torque 15-17 lbf.in (150 -170 cN.m)	
1590Z164	
1590Z164 Enclosure	
Natural Enclosure	1590Z164
Black Enclosure	1590Z164BK
Grey Enclosure - RAL7001 Gloss	1590Z164GY
ACCESSORIES	
Steel Inner Panel	1590Z164PL
Pre-Formed Silicone Gasket (2 Pack)	1590Z164G
Copper Ground Hardware (20 Pack) [M6 - 1.0 X 10mm / M6 Washer]	SCGM6-20
Stainless Steel Cover screws (20 pkg) [M6 - 1.0 x 24mm]	SC598-20
Copper Ground Hardware For Lid (50 Pack) [M4 - 0.7 X 6mm / M4 Washer]	SCGM4-50

Dimensions:
mm
[inches]

**HAMMOND
MANUFACTURING**
1590Z164
www.hammondmfg.com