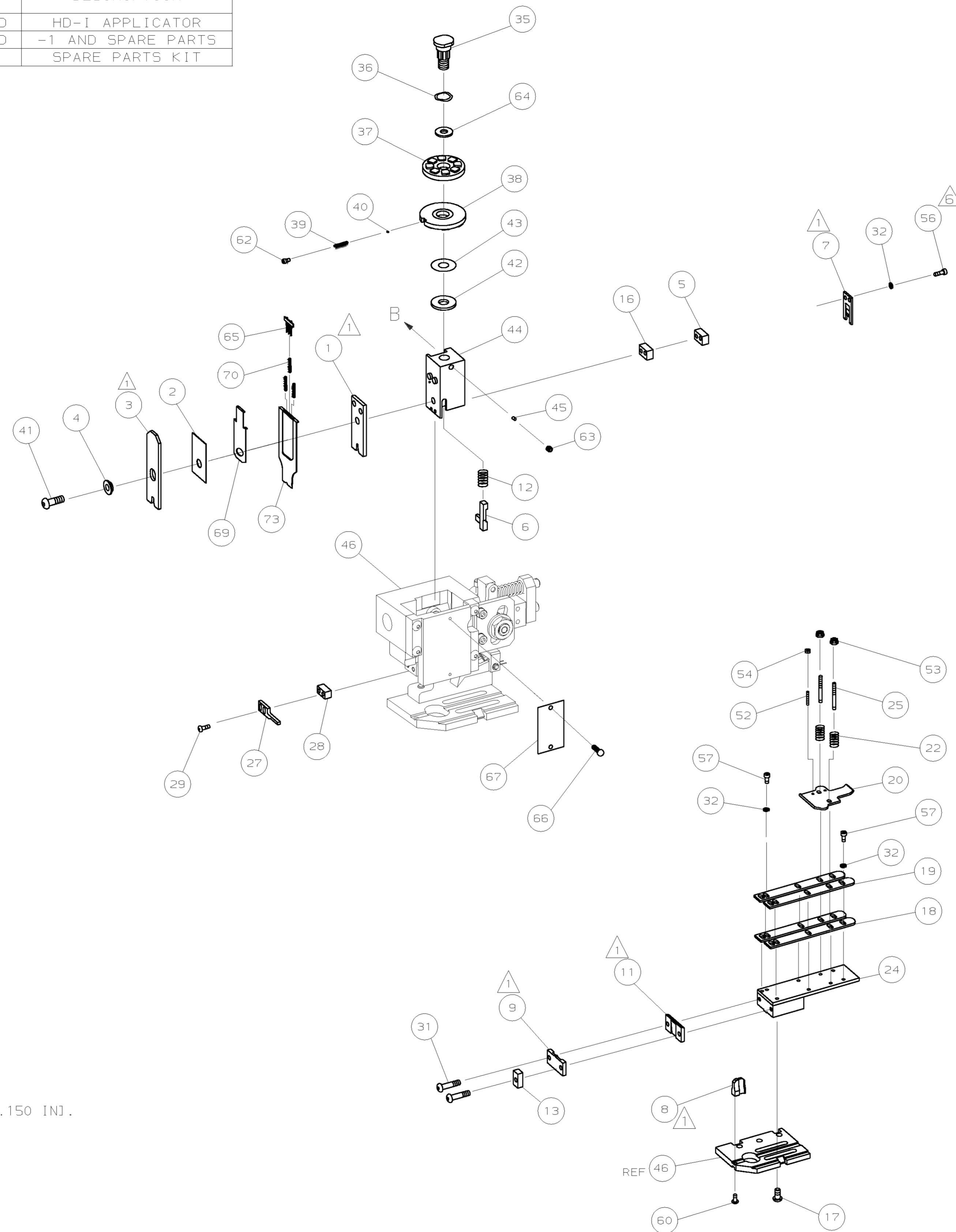
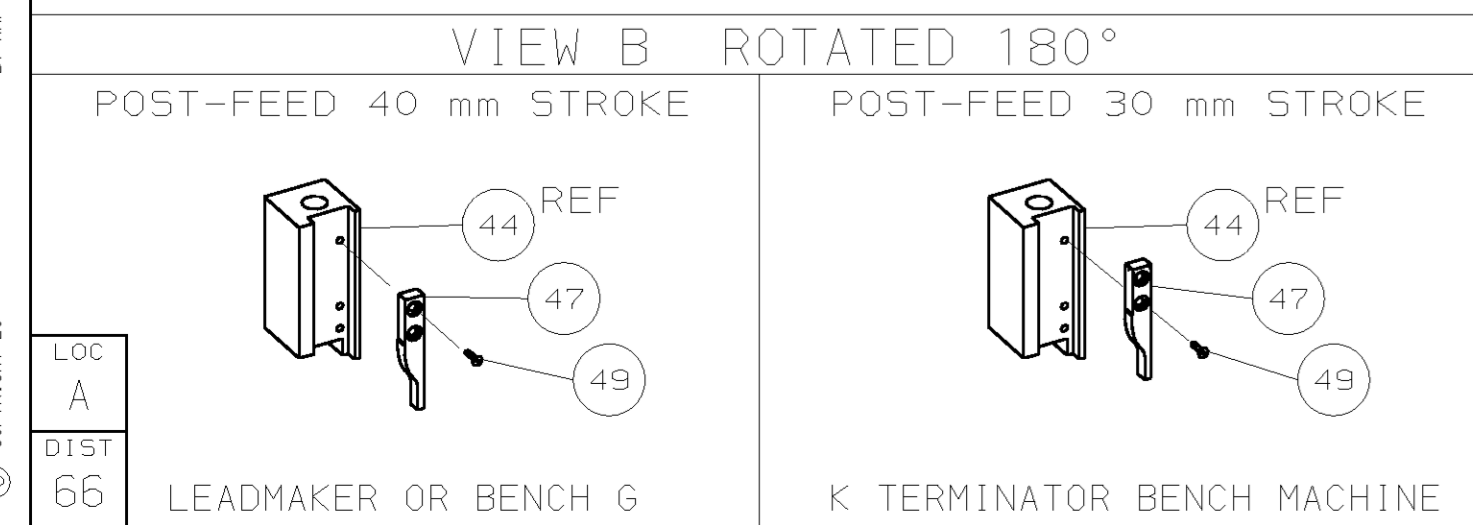


PART NUMBER	REV	FIRST USED	TERMINATOR	FEED TYPE	DESCRIPTION
1339755-1	A		BENCH & LEADMAKER	MECH POST FEED	HD-I APPLICATOR
7-1339755-1	A		BENCH & LEADMAKER	MECH POST FEED	-1 AND SPARE PARTS
7-1339755-7	A		-	-	SPARE PARTS KIT

CRIMP DATA ESCUBEDO TERMINAL AMP CRIMP SPECS				
TERMINAL NAME: RING TONGUE				
CRIMP	SIZE	TYPE	RANGE	
WIRE	3.56 [1.140 IN]	F	0.50mm <sup>2</sup> - 2.50mm <sup>2</sup> <span style="float:right">4</span>	
INSUL	4.57 [1.180 IN]	F	1.80-4.30 [0.071-.169 IN] <span style="float:right">4</span>	
WIRE STRIP LENGTH		APPL INSTRUCTION <span style="float:right">5</span>		
5.80-6.60 [1.228-.260 IN]		408-8323		
TERMINAL APPL SPEC		FEED 24.00 [1.945 IN]		
TERMINALS APPLIED				
AMP PN	MFR PN	AMP PN	MFR PN	-
1572589-1	3420.00	1572589-8	3421.32	-
1572589-2	3420.02	1572589-9	3422.00	-
1572589-3	3420.30	1-1572589-0	3422.02	-
1572589-4	3420.32	1-1572589-1	3422.30	-
1572589-5	3421.00	1-1572589-2	3422.32	-
1572589-6	3421.02	-	-	-
1572589-7	3421.30	-	-	-
WIRE SIZE	CRIMP HEIGHT	PIN PN AND LENGTH [IN]		
mm <sup>2</sup> AWG				
2.50mm <sup>2</sup>	2.62 ±0.05 [1.103 ±0.002 IN]	4-354778-3 [1.2710]		
1.50mm <sup>2</sup>	2.39 ±0.05 [1.094 ±0.002 IN]	6-354778-3 [1.2810]		
1.00mm <sup>2</sup>	2.29 ±0.05 [1.090 ±0.002 IN]	7-354778-1 [1.2850]		
0.50mm <sup>2</sup>	2.16 ±0.05 [1.085 ±0.002 IN]	8-354778-1 [1.2900]		



- 1 RECOMMENDED SPARE PARTS.
- 2. GREASE RAM, CAM, CAM FOLLOWER AND FEED ROD LIGHTLY.
- 3. LUBRICATE DAILY PER THE APPLICATOR INSTRUCTION SHEET SUPPLIED WITH THE APPLICATOR.
- 4 WIRE AND INSULATION RANGE SHOWN IS THAT OF TERMINAL. APPLICATOR RECOMMENDED INSULATION RANGE 1.80-3.80 [0.071-.150 IN].
- 5 CRIMP DATA CALCULATED BY TYCO LTD.
- 6 CUT TO LENGTH AT ASSEMBLY.



QTY	REV	QTY	REV	PART NO	DESCRIPTION	ITEM NO
-	1	1		1490525-2	DEPRESSOR, WIRE	73
-	1	1		1339755	PRINT, APPLICATOR LOG SHEET	72
-	1	1		1338705-2	DOCUMENTATION PACKAGE	71
-	3	3		2-23147-2	SPRING, DEPRESSOR	70
-	1	1		1490524-2	SPACER, DEPRESSOR	68
-	1	1		461264-1	PLATE, IDENTIFICATION	67
-	2	2		21017-2	SCR,DRIVE (#2X.19) ID PLATE	66
-	1	1		1424350-1	HOLDER, PIN, WIRED	65
-	1	1		986950-1	WASHER, FLAT PRECISION	64
-	1	1		3-18031-0	SCR,SKT SET (M6X6) RAM	63
-	1	1		18023-9	SCR,SKT CAP (M4X6) CP DSC	62
-	1	1		18024-7	SCR,BHC (M4X10) ANVIL	60
-	6	6		1-18023-0	SCR,SHC (M4X8) STRIP GUIDE	57
-	2	2		9-18023-6	SCR,SHC (M4X14) SLUG BLADE	56
-	2	2		18029-1	NUT, HEX (M3) DRAG	54
-	2	2		986965-1	NUT, HEX SL (M4) DRAG STUD	53
-	2	2		2-18032-2	SCR,SKT SET (M3X10) DRAG	52
-	1	1		18024-3	SCR,BHC (M3X10) CAM	49
-	1	1		1338676-1	CAM, POST-FEED 30 & 40 mm ST	47
-	1	1		1338662-1	APPLICATOR, BASIC (SUBASSY)	46
-	1	1		690191-1	PLUG, NYLON	45
-	1	1		1320998-1	RAM	44
-	1	1		690125-1	WASHER, LAMINATED	43
-	1	1		690124-1	WASHER, RAM	42
-	1	1		2-18024-6	SCREW,BHC (M8X25) CRIMPER	41
-	1	1		23241-1	BALL, STEEL	40
-	1	1		2-22278-7	SPRING, COMPRESSION	39
-	1	1		1320922-1	DISC, INSULATION	38
-	1	1		354777-1	WIRE DISC, PLASTIC	37
-	1	1		22480-5	WASHER, SPRING	36
-	1	1		690212-1	POST, RAM	35
-	8	8		18025-2	WASHER, LOCK (M4) SHEAR BL	32
-	2	2		1-18024-0	SCR,BHC (M4X20) SHEAR PL	31
-	2	2		18024-8	SCR,BHC (M4X12) STRIPPER	29
-	1	1		3-690451-2	SPACER, STRIPPER	28
-	1	1		240639-1	STRIPPER	27
-	2	2		1320906-1	DRAG, STUD	25
-	1	1		1320995-1	PLATE, STRIP GUIDE	24
-	2	2		4-22281-1	SPRING, DRAG	22
-	1	1		1338665-1	DRAG, STOCK	20
-	2	2		1338663-2	GUIDE, UPPER STRIP	19
-	2	2		1338663-3	GUIDE, LOWER STRIP	18
-	4	4		1-18024-8	SCR,BHC (M6X12) STRIP GD PL	17
-	1	1		1338708-1	SPACER, SLUG BLADE	16
-	1	1		690481-2	SPACER, HOLD DOWN	13
-	1	1		23846-1	SPRING, HOLD DOWN	12
-	1	1		240644-1	PLATE, REAR SHEAR	11
-	1	1		690482-4	PLATE, FRONT SHEAR	9
-	1	2	1	1-1333222-5	ANVIL	8
-	1	1		690474-4	BLADE, SLUG	7
-	1	1		7-455892-4	HOLD DOWN, TERMINAL	6
-	1	1		6-240641-5	SPACER, SLUG BLADE	5
-	1	1		238009-1	SPACER, BLOCK CRIMPER	4
-	1	2	1	456134-6	CRIMPER, INSULATION	3
-	1	1		455888-5	SPACER, CRIMPER	2
-	1	2	1	1-456425-2	CRIMPER, WIRE	1

QTY RECD PER ASSY		PARTS LIST	
DR	23SEP04	APP	23SEP04
L.L.OFTHOUSE	F.BACKHURST		
CHK	REL	180CT04	L.L.OFTHOUSE
NAME: END FEED HD-I APPLICATOR MACHINE REF: HD-I APPL			
SCALE	DWG NO	1339755	SHEET 1 OF 1 REV A

THIS DRAWING IS A CONTROLLED DOCUMENT.

LAYOUT L1339755

SET UP GAGE 458638-3

RELEASED FOR PUBLICATION

THIS DRAWING IS UNRELEASED. BY AMP INCORPORATED. ALL RIGHTS RESERVED.