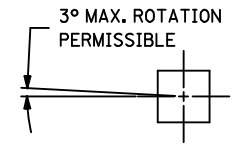
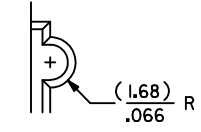


CKT. SIZE	PART NUMBER	ENG. NUMBER SDA-70204-	DIM. "A"		DIM. "B"		DIM. "C"	
			MM	IN.	MM	IN.	MM	IN.
08	25-02-4008	0835	7,62	.300	17,78	.700	20,32	.800
10	25-02-4010	0836	10,16	.400	20,32	.800	22,86	.900
12	25-02-4012	0837	12,70	.500	22,86	.900	25,40	1.000
14	25-02-4014	0838	15,24	.600	25,40	1.000	27,94	1.100
16	25-02-4016	0839	17,78	.700	27,94	1.100	30,48	1.200
18	25-02-4018	0840	20,32	.800	30,48	1.200	33,02	1.300
20	25-02-4020	0841	22,86	.900	33,02	1.300	35,56	1.400
22	25-02-4022	0842	25,40	1.000	35,56	1.400	38,10	1.500
24	25-02-4024	0843	27,94	1.100	38,10	1.500	40,64	1.600
26	25-02-4026	0844	30,48	1.200	40,64	1.600	43,10	1.700
28	25-02-4028	0845	33,02	1.300	43,10	1.700	45,72	1.800
30	25-02-4030	0846	35,56	1.400	45,72	1.800	48,26	1.900
32	25-02-4032	0847	38,10	1.500	48,26	1.900	50,80	2.000
34	25-02-4034	0848	40,64	1.600	50,80	2.000	53,34	2.100
36	25-02-4036	0849	43,10	1.700	53,34	2.100	55,88	2.200
38	25-02-4038	0850	45,72	1.800	55,88	2.200	58,42	2.300
40	25-02-4040	0851	48,26	1.900	58,42	2.300	60,96	2.400

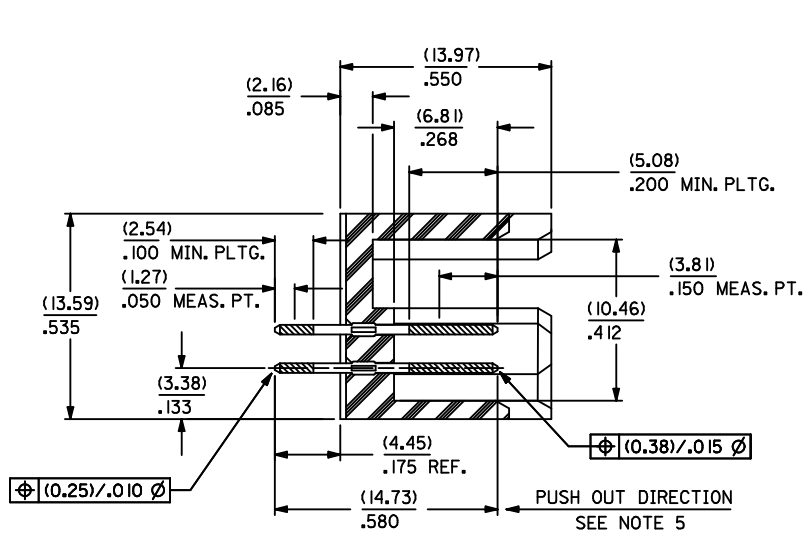
CKT. SIZE	PART NUMBER	ENG. NUMBER SDA-70204-	DIM. "A"		DIM. "B"		DIM. "C"	
			MM	IN.	MM	IN.	MM	IN.
42	25-02-4042	0852	50,80	2.000	60,96	2.400	63,50	2.500
44	25-02-4044	0853	53,34	2.100	63,50	2.500	66,04	2.600
46	25-02-4046	0854	55,88	2.200	66,04	2.600	68,58	2.700
48	25-02-4048	0855	58,42	2.300	68,58	2.700	71,12	2.800
50	25-02-4050	0856	60,96	2.400	71,12	2.800	73,66	2.900
52	25-02-4052	0857	63,50	2.500	73,66	2.900	76,20	3.000
54	25-02-4054	0858	66,04	2.600	76,20	3.000	78,74	3.100
56	25-02-4056	0859	68,58	2.700	78,74	3.100	81,28	3.200
58	25-02-4058	0860	71,12	2.800	81,28	3.200	83,82	3.300
60	25-02-4060	0861	73,66	2.900	83,82	3.300	86,36	3.400
62	25-02-4062	0862	76,20	3.000	86,36	3.400	88,90	3.500
64	25-02-4064	0863	78,74	3.100	88,90	3.500	91,44	3.600
66	25-02-4066	0864	81,28	3.200	91,44	3.600	93,98	3.700
68	25-02-4068	0865	83,82	3.300	93,98	3.700	96,52	3.800
70	25-02-4070	0866	86,36	3.400	96,52	3.800	99,06	3.900
72	25-02-4072	0867	88,90	3.500	99,06	3.900	101,60	4.000



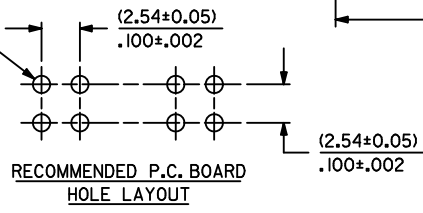
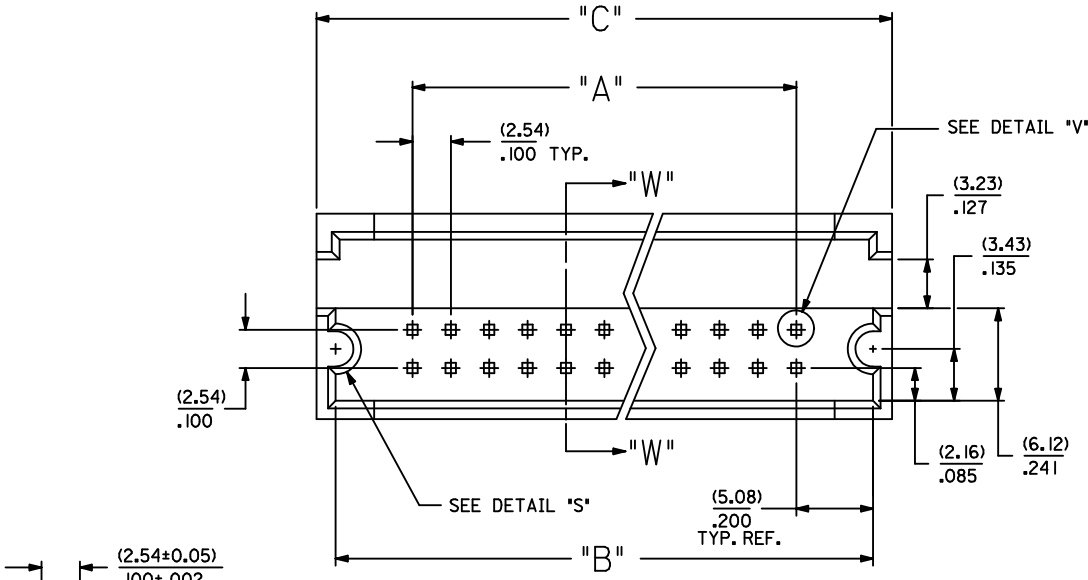
DETAIL "V"  
SCALE = 20:1



DETAIL "S"



SECTION W-W



- NOTES:
1. WAFER MATERIAL: GLASS FILLED NYLON; COLOR: BLACK
  2. PIN MATERIAL: COPPER ALLOY
  3. PIN PLATING:  
TIP: 30 MICROINCHES MINIMUM GOLD IN SELECTED AREA  
TAIL: 75 MICROINCHES MINIMUM TIN IN SELECTED AREA  
OVER NICKEL UNDERPLATE OVER-ALL
  4. PINS MUST MEET SOLDERABILITY SPEC. NO. 152
  5. PIN PUSH-OUT FORCE (1.81 KG)/4 LBS MINIMUM
  6. REFER TO P.S. NO. 70204
  7. STANDARD PACKAGING PER: PK-70873-0070

CORRECT DIMENSION EC NO: UCP2011-3892 DRAWN BY: DRWINHIS BARRA 2011/06/27 CHKD: J MORGAN APPR: MILLER 2011/07/07	QUALITY SYMBOLS ▽=0 ▽=0 ▽=0	GENERAL TOLERANCES (UNLESS SPECIFIED)	DIMENSION STYLE MM/IN	SCALE 4:1	DESIGN UNITS INCH	THIRD ANGLE PROJECTION
		4 PLACES ± --- ± --- 3 PLACES ± --- ± .010 2 PLACES ± 0.25 ± --- 1 PLACE ± --- ± --- ANGULAR ± 1/2°	DRAWN BY: JAS DATE: 1986/05/20 CHECKED BY: EIK DATE: 1986/05/20 APPROVED BY: WAZ DATE: 1986/05/20	TITLE SHROUDED HEADER DUAL ROW W/PCB SLOTS & GUIDE EARS .100 GRID, .025 SQ PIN	MOLEX INCORPORATED	
DRAFT WHERE APPLICABLE MUST REMAIN WITHIN DIMENSIONS		SEE TABLE		THIS DRAWING CONTAINS INFORMATION THAT IS PROPRIETARY TO MOLEX INCORPORATED AND SHOULD NOT BE USED WITHOUT WRITTEN PERMISSION		