

# Time Machine II

## User's Manual

## Table of Contents

Introduction .....	3
Important Notes.....	3
Package Contents.....	3
Software Installation .....	5
Software Installation from File.....	6
Hardware Connection.....	6
Driver Installation.....	7
Working With the Time Machine Software .....	8
User Interface features .....	8
Entering Part Number .....	10
Part Number Generator .....	11
Part Programming.....	12
Tracking ID.....	12
Auto Detect Mode .....	12
Viewing Operation Logs .....	13
Data LogMode .....	14
Viewing DataLogs .....	15
Software Updates.....	17
Troubleshooting .....	18
The Time Machine fails to start.....	18
Programming generates a FAIL message .....	18
Reporting a bug.....	18
Disclaimer .....	19

## Introduction

This User's Manual describes the software and hardware features of the Time Machine II (TMII), a portable kit designed for programming SiTime field programmable (FP) oscillators. The Time Machine supports many SiTime oscillator parts, with special socket cards that can accommodate different package sizes.

## Important Notes

- Refer to disclaimer section for terms and conditions governing the use TMII and devices programmed on TMII.
- After programming, place samples into an antistatic bag clearly marked "Engineering Samples."
- Samples can only be programmed using specific field programmable (FP) parts for a given oscillator family. Refer to <http://www.sitime.com/fp-devices> for more information on how to select and order FP parts.
- Please contact your SiTime sales representative for large volume production orders.
- The Time Machine II has not been tested for EMC compliance, EMI radiation susceptibility, or any temperature and humidity cycling. The recommended temperature range is 20°C to 35°C.

## Package Contents

Your Time Machine II package consists of the following items:

1. SiTime Programmer (1 pcs)
2. Socket cards:  
Time Machine II comes with three different socket cards. Each adapter board includes two or more sockets for connecting devices in different packages to the main unit for programming. It is possible to remove and insert devices in the socket while the board is connected to the SiTime Programmer
3. USB Cable (1 pcs)
4. Quick Start Guide (can also be found here - <http://www.sitime.com/tm-um>)
5. Samples kit with several devices (enclosed device types may vary; please contact sales for additional units)
6. Tweezers for handling small devices manually

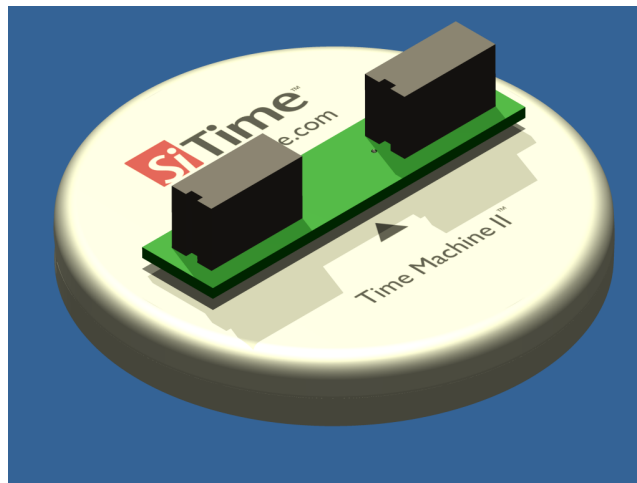


Figure 1: Time Machine II base unit



Figure 2: Time Machine socket card SiT6160DK. Supports 5.0mm x 3.2mm (6-pin) and 7.0mm x 5.0mm (6-pin)

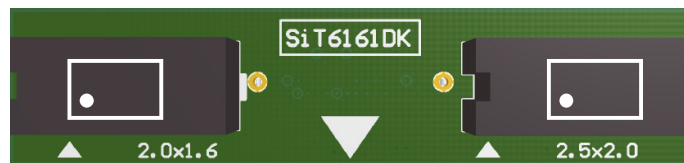


Figure 3: Time Machine socket card SiT6161DK. Supports 2.0mm x 1.6mm (4-pin) and 2.5mm x 2.0mm (4-pin) packages

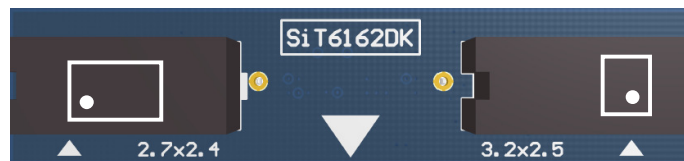


Figure 4: Time Machine socket card SiT6162DK. Supports G package (2.7mm x 2.4mm 4-pin) and 3.2mm x 2.5mm (4-pin) packages



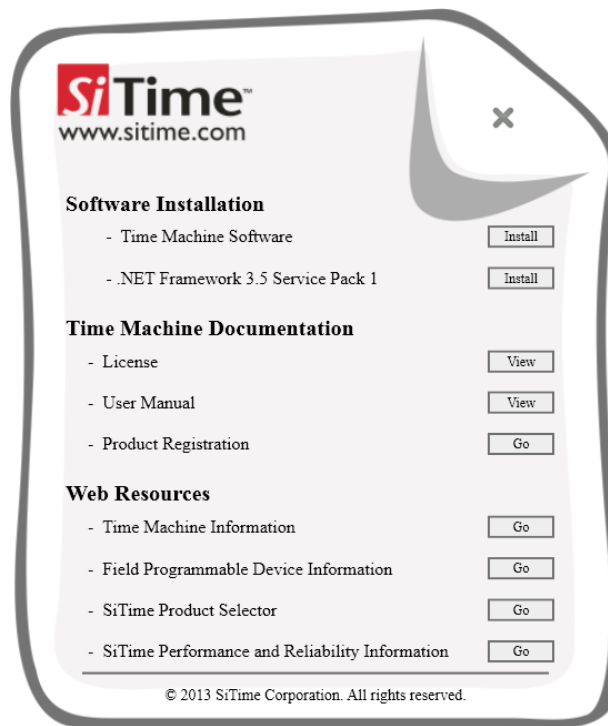
Figure 5: Time Machine socket card SiT6163DK. Supports G package (2.7mm x 2.4mm 4 pin) and 3.2mm x 2.5mm (6 pin) packages



Figure 6: Time Machine socket card SiT6165DK. Supports S package (SOT23-5) and 3.2mm x 2.5mm (6 pin) packages

## Software Installation

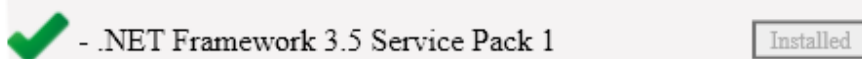
Go to web page (<http://www.sitime.com/tm-sw>) and download SiTime installer. Run downloaded installer and you will be brought to screen below.

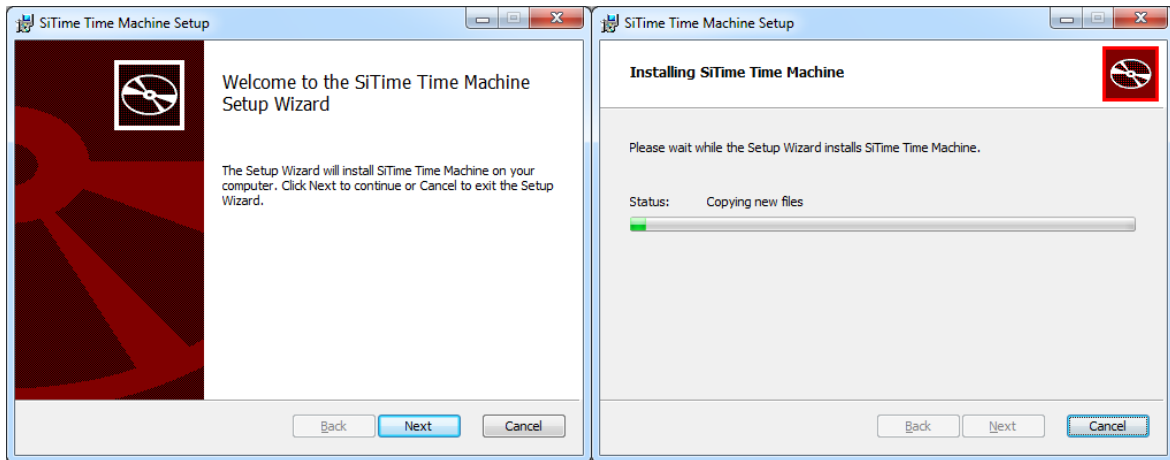


Press *Install* button right after *Time Machine Software*.

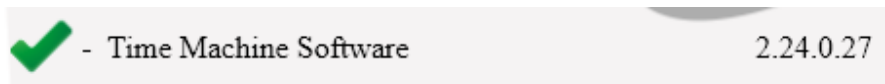
### Note:

The Time Machine requires *.NET Framework* installed on your computer. Install *.NET Framework* before installing *Time Machine Software*. Green checkmark will appear if *.NET Framework* will be present on target PC or after installation completed.





Once installation is completed *Time Machine Software* version will be displayed.



## Software Installation from File

If you do not have the installation USB Flash drive, you may download Time Machine software from the [TMII product page](#) on SiTime website. In this case, you should install it by double-clicking the setup file and following the on-screen installation instructions.

## Hardware Connection

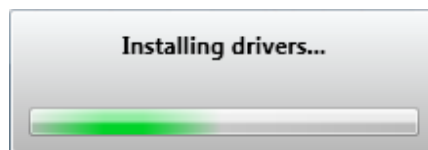
Connect the SiTime Programmer to your PC using the USB cable. The power light will be illuminated.

The first time the SiTime Programmer is connected, the *Windows Found New Hardware* notification will appear. Please wait until driver installation is completed.

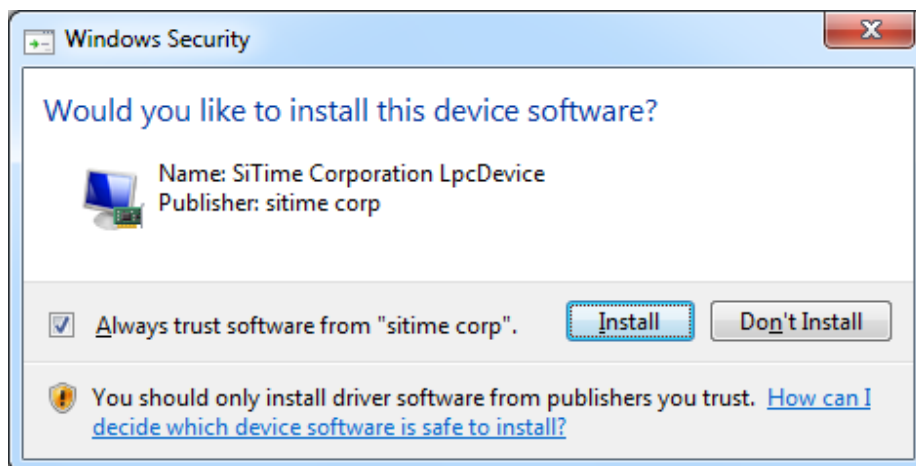


## Driver Installation

The first time the software is started the driver installation will be required. Time Machine software will install all required drivers automatically.

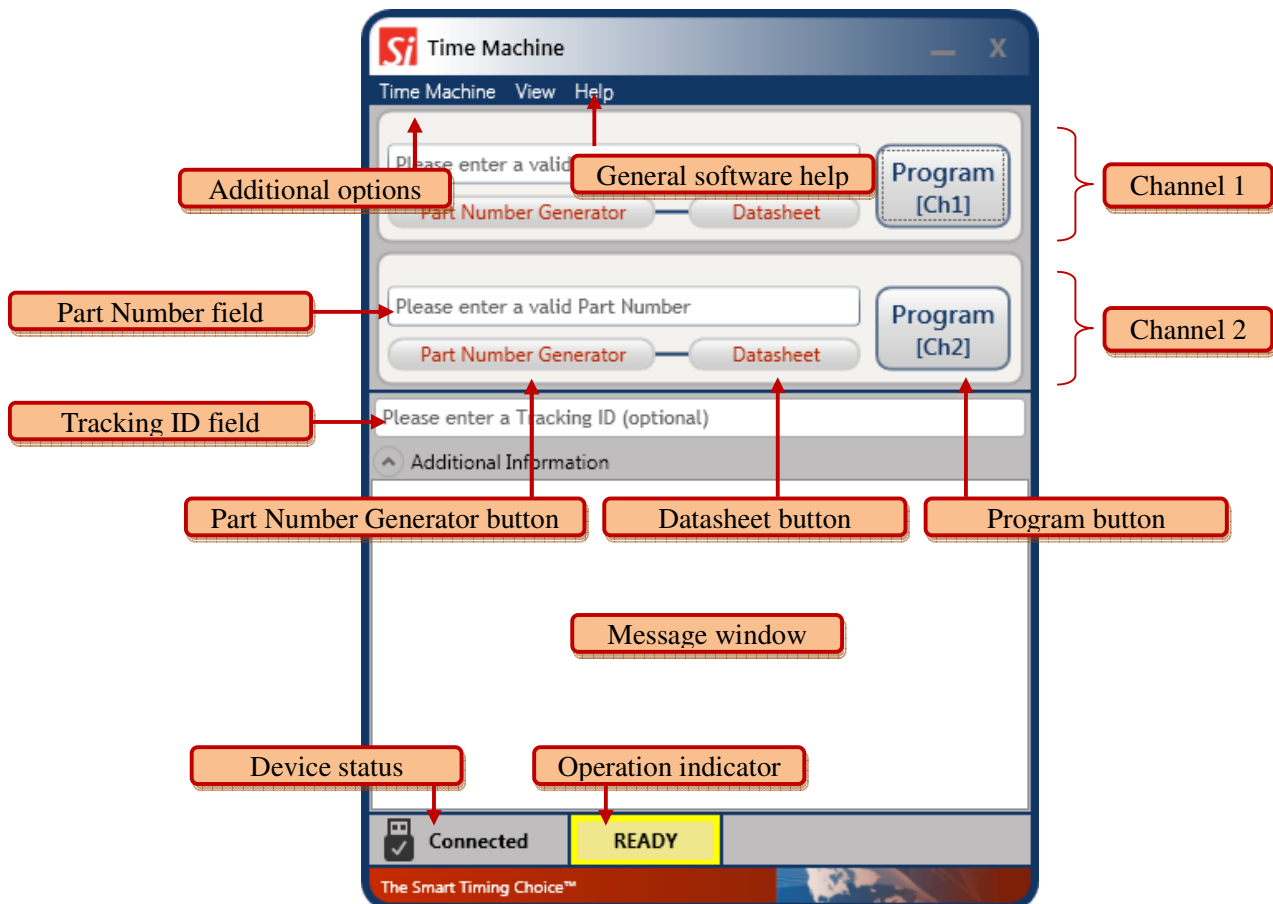


The Windows Security notification window will appear. Please check *Always trust software from "sitime corp"* and press the *Install* button.



## Working With the Time Machine Software

Starting the software launches the main user interface (UI) as shown in below.



### User Interface features

The following features are available in the main UI:

- **TimeMachine> View Logs** – launches the log viewer
- **TimeMachine>Auto Detect** – enables/disables parts auto detection mode
- **TimeMachine> Settings** – launches available part families configuration
- **TimeMachine>Exit** – quits the software
- **Help>View Manual** – opens this User's Manual
- **Help>Supported devices** – shows the list of devices supported by Time Machine

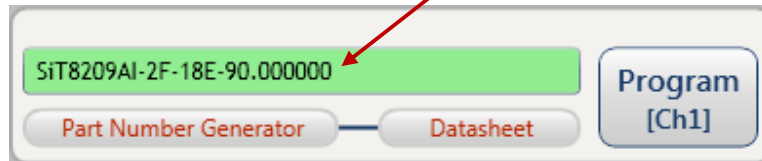


- **Help > Register** – links to registration on SiTime Corp. website ([www.sitime.com/time-machine-registration](http://www.sitime.com/time-machine-registration))
- **Help > FP Device Refill** – links to Field Programmable Oscillators page ([www.sitime.com/fp-devices](http://www.sitime.com/fp-devices))
- **Help>Get Support** – opens your email client with a draft of support request e-mail
- **Help > Check for Updates** – checks for software updates (requires internet connection)
- **Help > About** - SW/FW versions , only SW version is shown if the SiTime Programmer is not connected
- **Device status** – shows status of the SiTime Programmer (Connected/Disconnected)
- **Operation indicator** – indicates operation status and results (READY/BUSY/PASS/FAIL)
- **Message Window** – reflects operation result and part detection result.

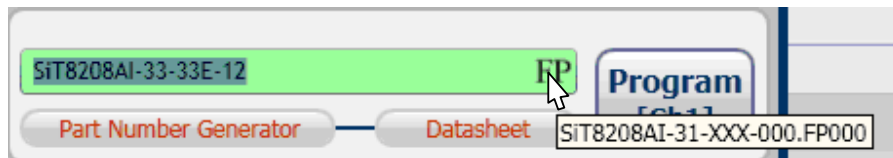
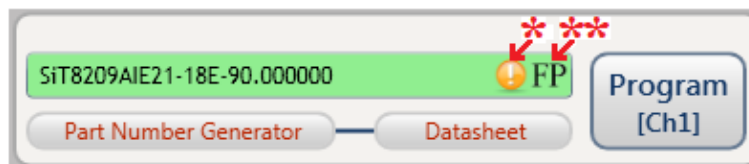
The main UI can run with or without the SiTime Programmer connected to the host computer. This allows you to view the programming log history and get software updates without connecting the base unit.

## Entering Part Number

You may type the SiTime Part Number into the *Part Number Field* or copy it from another source and paste.



If you enter a valid SiTime Part Number, the background of the *Part Number Field* becomes green. The background will turn red when the part number is invalid. You cannot program the device with an invalid part number.

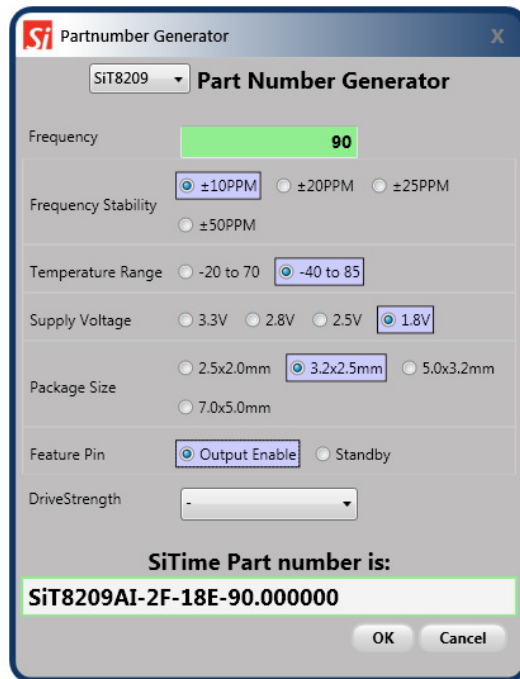


(\*) Time Machine II software will alert you with this icon if the part you are trying to program contains non-default drive strength.

(\*\*) With the correct part number in the *Part Number Field* Time Machine II software will automatically detect which FP (Field programmable or “blank”) family you are going to use to program that part number. If you put a pointer over FP icon a box with blank part number will appear. More details on FP parts may be found [here](#).

## Part Number Generator

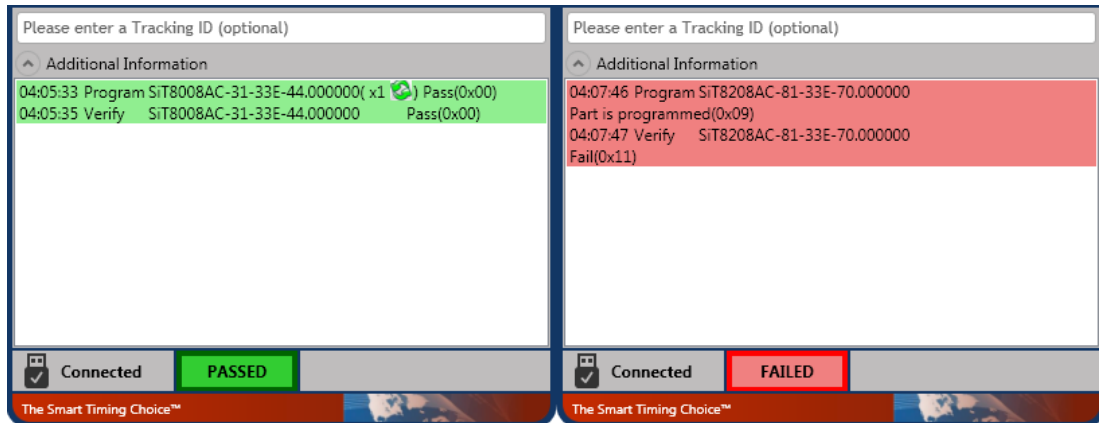
The *Part Number Generator* provides an option for generating SiTime part numbers. Click the *Part Number Generator* button on the appropriate Channel. Note that you should have a valid FP part in the specific Channel socket you are entering the part number in. The PN generator window will appear.



Select the desired part family from the drop down list at the top of the *Part Number Generator* window. Specify desired frequency and other configuration parameters and click *OK*. The generated part number will be automatically pasted into the *Part Number* field of the appropriate Channel. The *Cancel* button returns you to the Channel view without updating the *Part Number* field.

## Part Programming

Once you have entered a valid part number, click the *Program* button to program the part. The programming process result will be reflected in the output window as shown below.



If part programming is successful the *Operation indicator* field will show a green **PASSED** indicator. If the part programming fails the *Operation indicator* field will show a red **FAILED** indicator. In this case, see the "Programming generates a FAIL message" section of this manual for information about how to proceed. Part Verification is done automatically following any Programming operation.

During Programming and Verification procedures the active channel window will dim and all controls in the channel dialog boxes will be disabled. The *Operation indicator* will read BUSY as shown below.



## Tracking ID

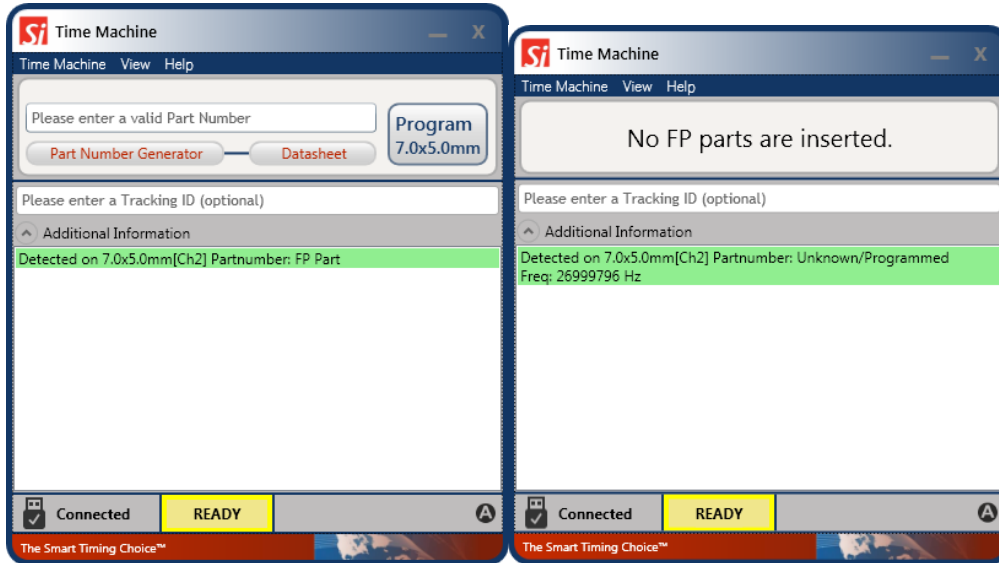
The main UI includes an optional *Tracking ID* field to help you track programming history. After entering the part number but before programming, you may enter a text string to be associated with the part. This *Tracking ID* will then be displayed after programming in the *Logs viewer* window.

## Auto Detect Mode

To enable Auto Detect mode click **TimeMachine > Auto Detect**. The check mark will be displayed indicating that Auto Detect mode is enabled. In Auto Detect mode with the SiTime programmer connected, the software will automatically check for the presence of a part in each

Channel and bring up an individual channel view for the appropriate channel. An appropriate message will be displayed in the *Message Window* whenever an FP part is detected.

Auto Detect mode can be used for part frequency estimation. If an already programmed part is inserted in the socket, the message will display the estimated part frequency.

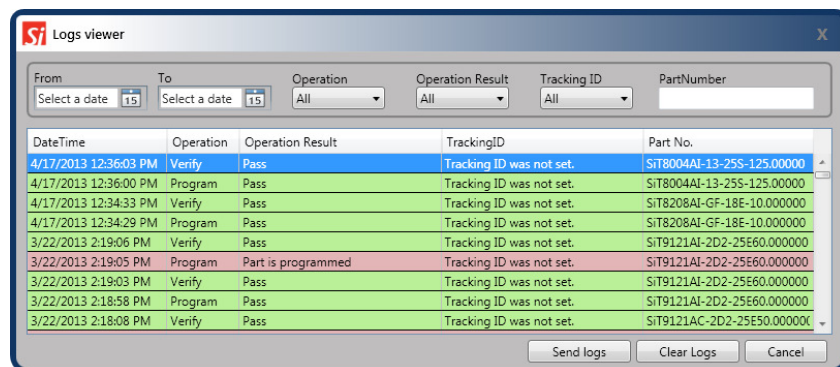


**Note:**

Auto Detect estimated frequency measurement result should not be used for part performance judgment.

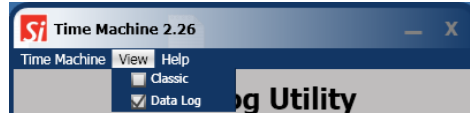
## Viewing Operation Logs

Time Machine stores records of all parts programmed and you can access them at any time in order to view programming history. In order to launch the *Log Viewer* please select **TimeMachine > View Logs** on the main UI.



## Data Log Mode

Data log mode allows storing additional information about programmed parts and order during batch programming. To switch to the data log mode please select **View > Data Log** as shown in the figure below.



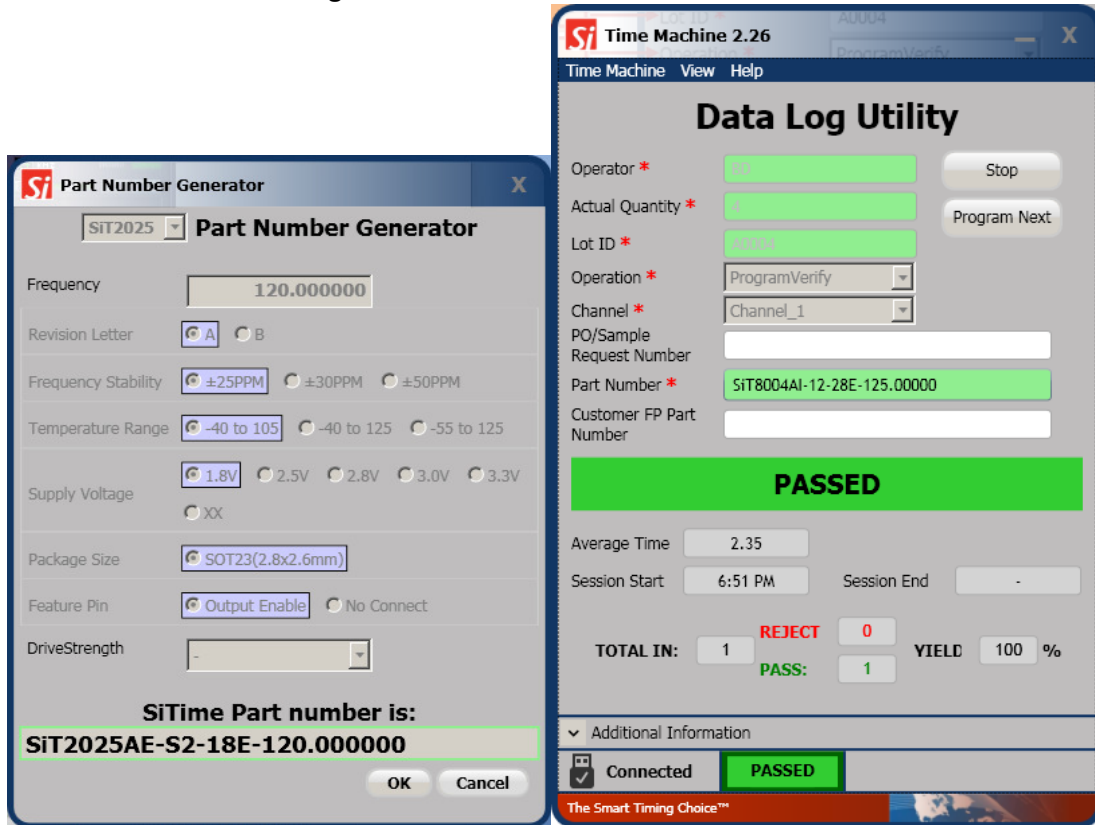
*Data Log Utility* has fields for entering ordering information, operator lot information and part number. Fields marked with red asterisk should be filled mandatory. Once required information is entered, it's possible to start programming session.

The screenshot shows the **Data Log Utility** window in Time Machine 2.26. The interface includes the following fields and indicators:

- Operator \***: Input field containing "BD".
- Actual Quantity \***: Input field containing "4".
- Lot ID \***: Input field containing "A0004".
- Operation \***: Dropdown menu showing "ProgramVerify".
- Channel \***: Dropdown menu showing "Channel\_1".
- PO/Sample Request Number**: Input field.
- Part Number \***: Input field containing "SiT2025AE-S2-18E-120.000000".
- Customer FP Part Number**: Input field.
- Start button**: A button labeled "Start".
- READY**: A large yellow banner indicating the device is ready.
- Average Time**: Input field containing "0".
- Session Start**: Input field containing "-".
- Session End**: Input field containing "-".
- TOTAL IN:** Input field containing "0".
- REJECT:** Input field containing "0".
- PASS:** Input field containing "0".
- YIELD:** Input field containing "0 %".
- Operation indicator**: A yellow box labeled "READY" at the bottom of the window.
- Device status**: A green checkmark icon and the text "Connected".

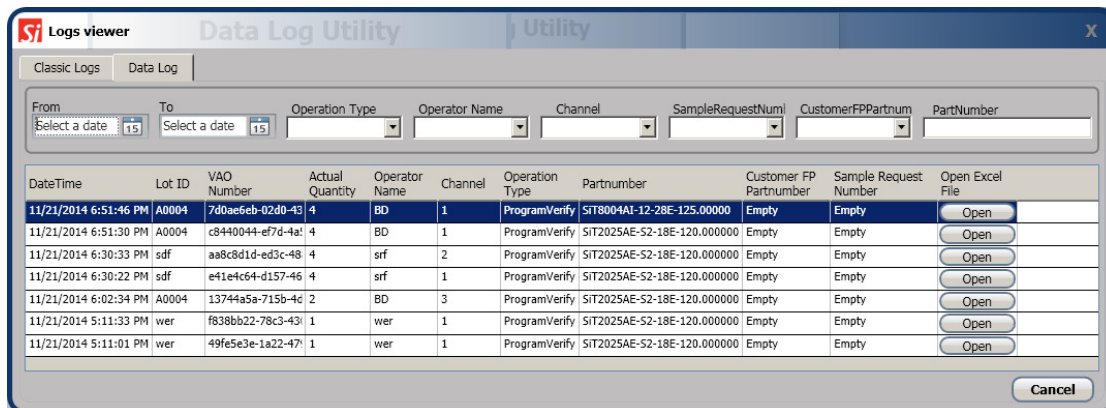
At the beginning of programming session *Part Number Generator* appears showing decoded

part number. After pressing *OK* in *Part Number Generator* window programming of first part starts. When part programming is done operator should place new FP part and press *Program Next* button. Programming session ends when number of programmed parts reaches *Actual Quantity* entered or *Stop* button is pressed. At programming session end programming information is stored to the log.



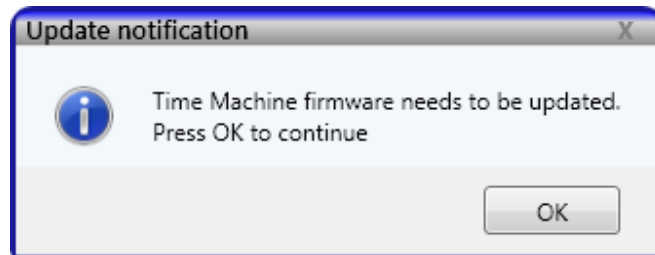
### Viewing Data Logs

Data logs can be displayed by opening *Log Viewer* (*TimeMachine > View Logs*) and selecting Data Log tab.



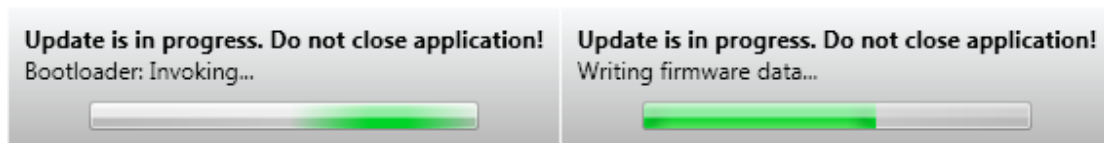
## Firmware Updates

The Time Machine may require a firmware update. You will be prompted to apply it during the software launch or when you connect the device.



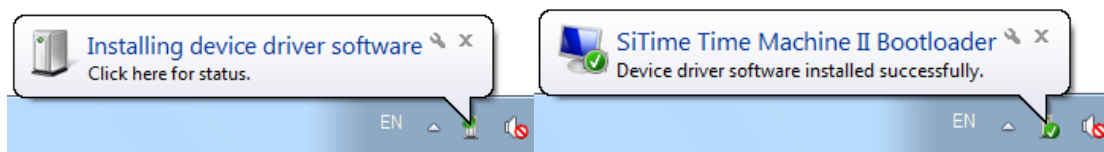
It is strongly recommended that you perform an update immediately.

**Do not close the application until the update process is complete. The FW update process will start after clicking OK.**



**Note:**

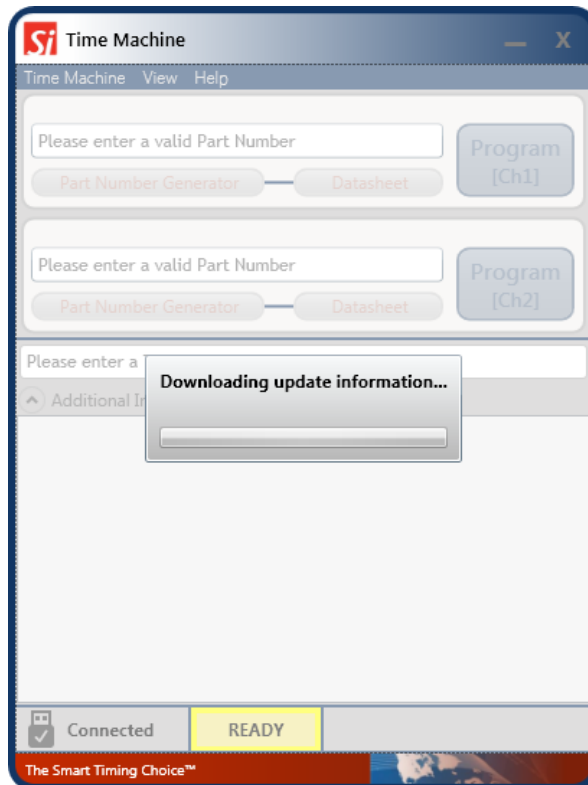
*Windows Found New Hardware* notification may appear during the firmware update. In this case, please wait until driver installation is complete.



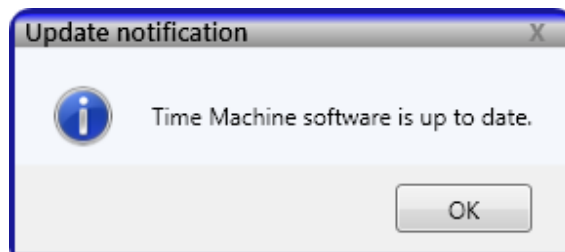


## Software Updates

The software will occasionally check for availability of a new software version. This feature requires an internet connection. You can check for updates manually at any time by clicking **Help >Check for Updates** under the menu in Time Machine software.



If a software update is available, press *Yes* to download the update. The installation will start automatically after finishing download process. You will also be notified if your Time Machine software is up-to-date.



## Troubleshooting

Several common issues may occur while using Time Machine. This section describes how to address them.

### The Time Machine fails to start

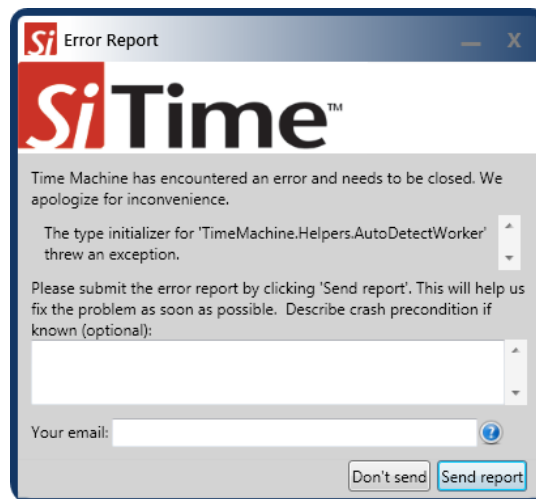
Reinstall the Time Machine software. Run *TimeMachineSetup.msi* from the USB Flash drive or download from the SiTime site: [TMII product page](#) or request the Time Machine software via email from your local SiTime sales representative.

### Programming generates a **FAIL** message

Make sure you are using an appropriate Field Programmable (FP) part in the correct socket and that part has not been programmed already. If these conditions are met and programming fails, try replacing the device.

## Reporting a bug

Time Machine has an automatic crash report sending feature. If the system crashes, please send a report to SiTime. Please provide additional information to help us to analyze and resolve the issue.



If you find a bug that does not cause the program to crash, or if you have a feature to suggest, please contact SiTime Support at [TimeMachineSupport@sitime.com](mailto:TimeMachineSupport@sitime.com). Please follow suggestions in this section before reporting an issue.

## Disclaimer

1. The Time Machine II Programmer and associated hardware (henceforth Platform) are intended for use only with SiTime's MEMS oscillators. This Platform will not program any other manufacturer's programmable oscillators and no attempt to do so should be made.
2. The Platform is intended for use for engineering development and evaluation of SiTime's MEMS Oscillators. SiTime does not guarantee or warranty the devices that are programmed on this Platform for qualification or production purposes.
3. The Platform should be used in static free environment with good engineering practices.
4. This Platform does not fall under the scope of the European Union directives regarding electromagnetic compatibility, FCC, CE or UL and therefore may not meet the technical requirements of these directives.
5. THE PLATFORM AND ITS ACCOMPANYING SOFTWARE AND DOCUMENTATION ARE PROVIDED ON AN "AS-IS" BASIS, "WITH ALL FAULTS", AND WITH NO WARRANTY WHATSOEVER. SITIME AND ITS LICENSORS EXPRESSLY DISCLAIMS ALL WARRANTIES, WHETHER EXPRESS, IMPLIED OR STATUTORY, INCLUDING WITHOUT LIMITATION ANY WARRANTIES OF MERCHANTABILITY, FITNESS FOR A PARTICULAR PURPOSE, TITLE, AND NON-INFRINGEMENT. SITIME DOES NOT WARRANT THAT USE OF THE PLATFORM (OR ITS ACCOMPANYING SOFTWARE) WILL BE UNINTERRUPTED OR ERROR-FREE OR THAT DEFECTS WILL BE CORRECTED OR THAT THE PLATFORM (OR ITS ACCOMPANYING SOFTWARE) ARE FREE OF VIRUSES OR OTHER HARMFUL COMPONENTS.
6. The user assumes all responsibility and liability for [the] proper and safe handling of the Platform and the associated programmed MEMS Oscillators.
7. The user indemnifies SiTime from all claims arising from the handling or use of this Platform and the associated field programmable devices.
8. Please contact a SiTime representative if you have any issues or problems with using this Platform.