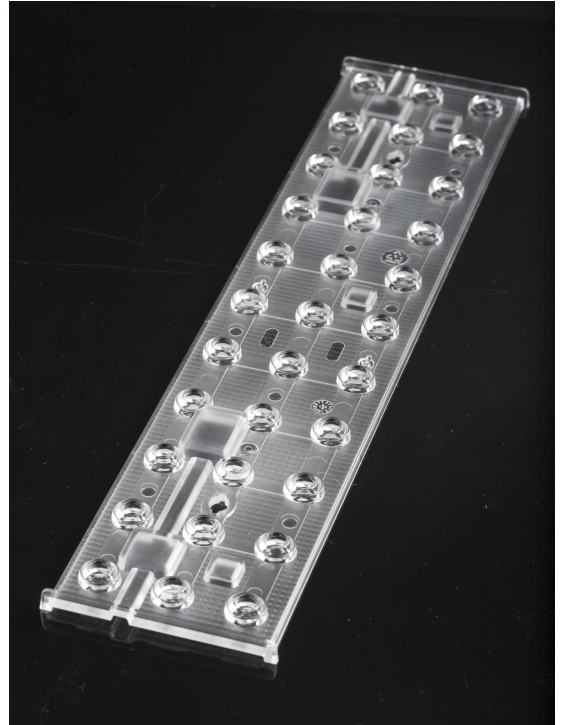


FLORENCE2-Z60

~60° wide beam

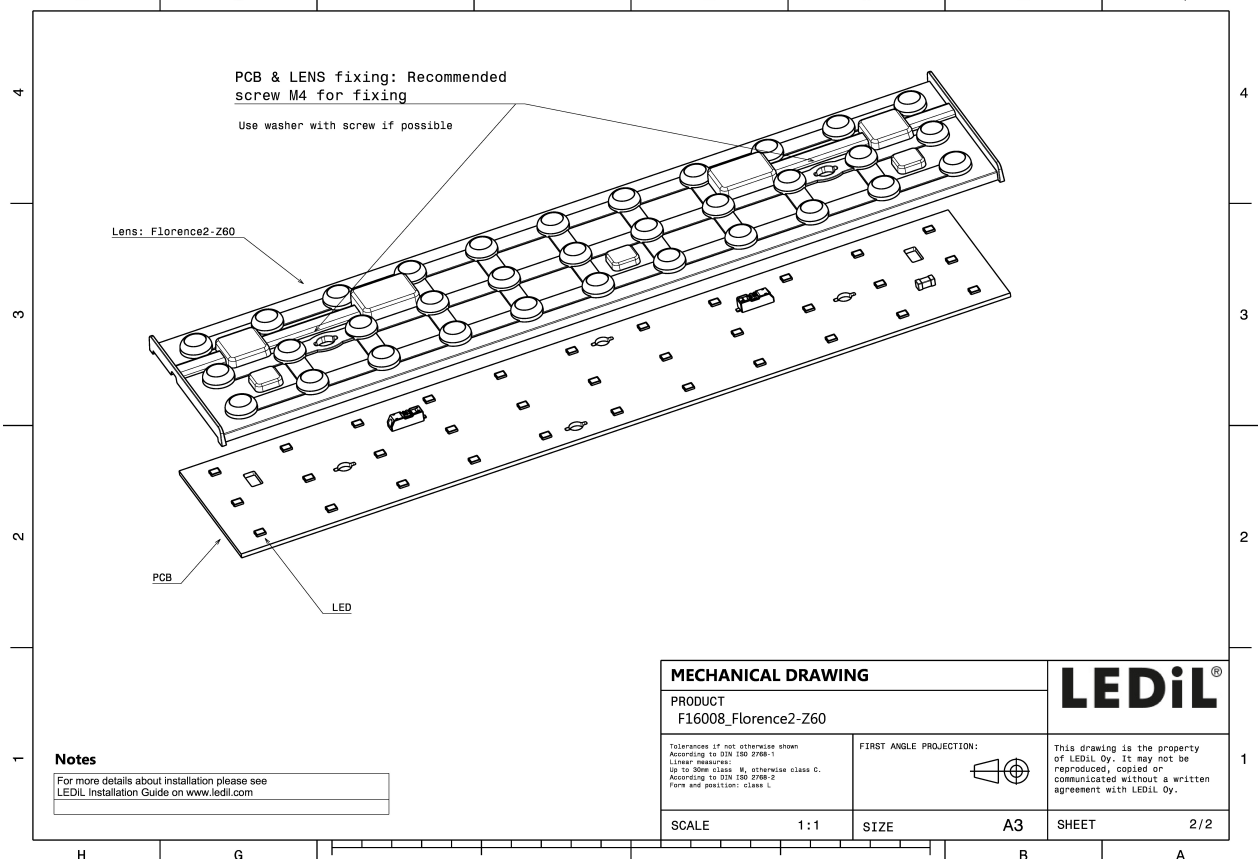
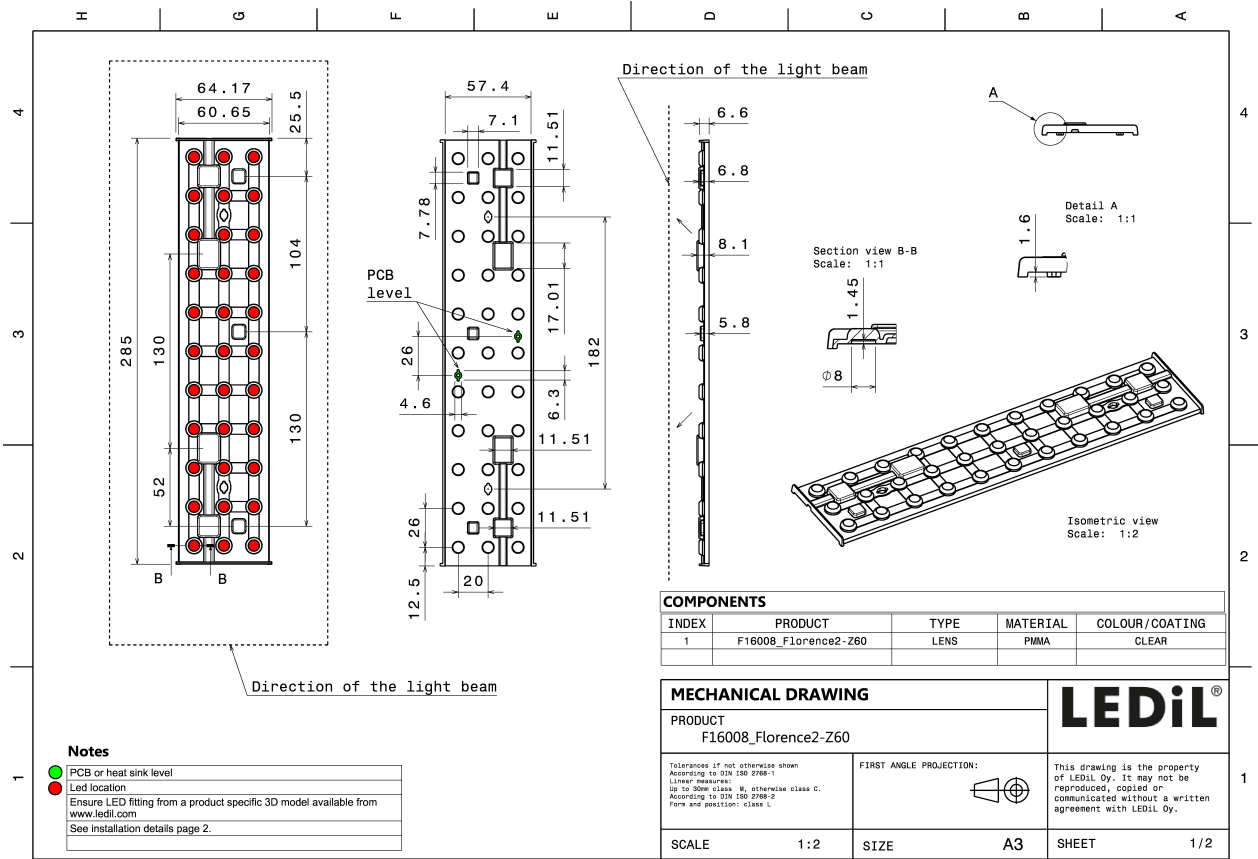
TECHNICAL SPECIFICATIONS:

Dimensions	285.0 x 64.2 mm
Height	8.1 mm
Fastening	screw
Colour	clear
Box size	398 x 298 x 140 mm
Box weight	4.8 kg
Quantity in Box	78 pcs
ROHS compliant	yes ⓘ



MATERIAL SPECIFICATIONS:

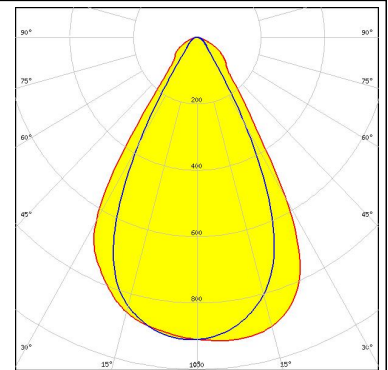
Component	Type	Material	Colour
FLORENCE2-Z60	Lens array	PMMA	clear



PHOTOMETRIC DATA (MEASURED):

LG Innotek

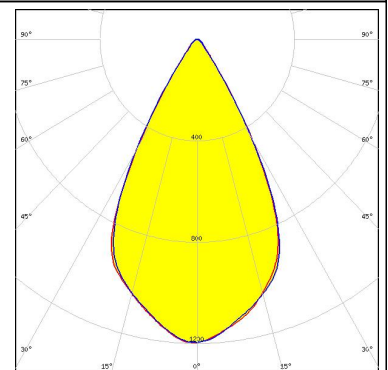
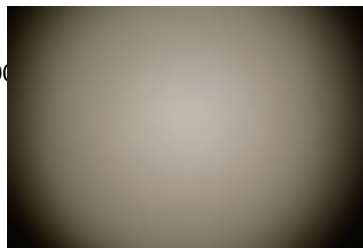
LED LG 6030
 FWHM 60.0°
 Efficiency 93 %
 Peak intensity 0.900 cd/lm
 Required components:



LUMILEDS

LED LUXEON XR-3535L (L202 - xxxx033C3000)

FWHM 56.0°
 Efficiency 97 %
 Peak intensity 1.200 cd/lm
 Required components:

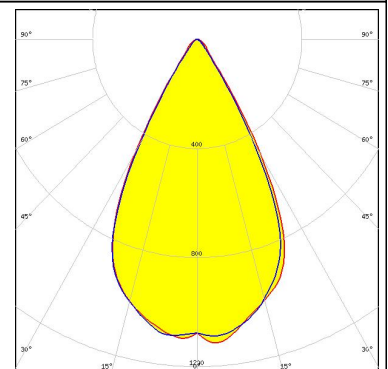
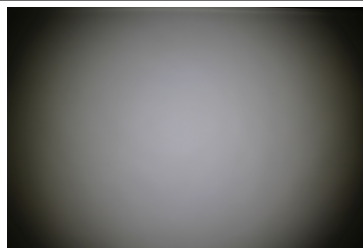


OSRAM

Opto Semiconductors

LED Duris E5

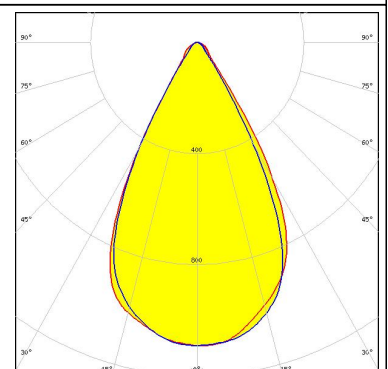
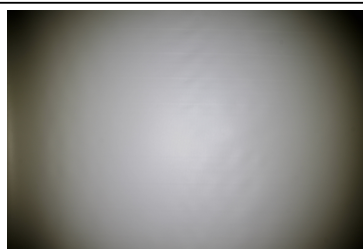
FWHM 56.0°
 Efficiency 94 %
 Peak intensity 1.100 cd/lm
 Required components:



PHILIPS

LED Fortimo LED Line 1ft 1100lm 3R xV4

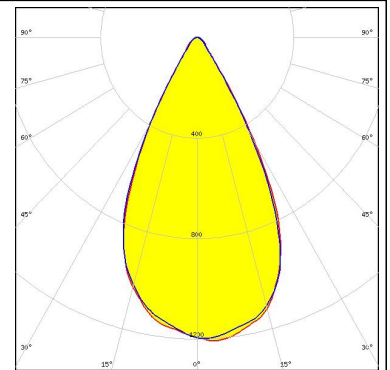
FWHM 57.0°
 Efficiency 94 %
 Peak intensity 1.100 cd/lm
 Required components:



PHOTOMETRIC DATA (MEASURED):

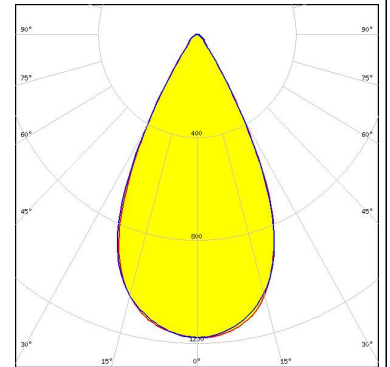
PHILIPS

LED Fortimo LED Line 1ft 650lm 3R xV4
 FWHM 54.0°
 Efficiency 94 %
 Peak intensity 1.200 cd/lm
 Required components:



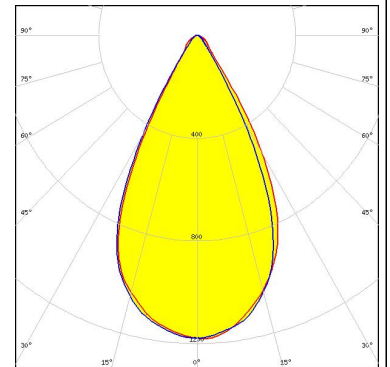
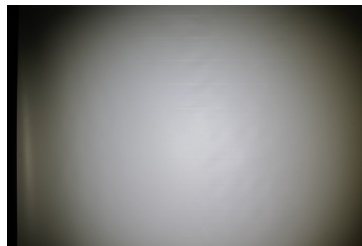
SAMSUNG

LED LM28xB Series
 FWHM 53.0°
 Efficiency 92 %
 Peak intensity 1.200 cd/lm
 Required components:



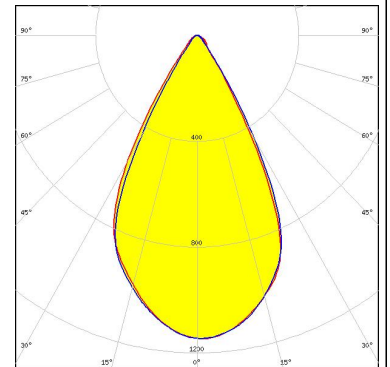
SAMSUNG

LED LM561B Plus
 FWHM 54.0°
 Efficiency 94 %
 Peak intensity 1.200 cd/lm
 Required components:



SEOUL SEMICONDUCTOR

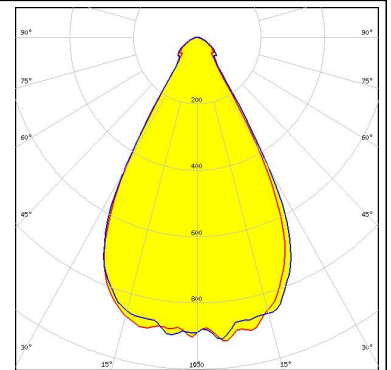
LED SEOUL 5630
 FWHM 57.0°
 Efficiency 94 %
 Peak intensity 1.100 cd/lm
 Required components:



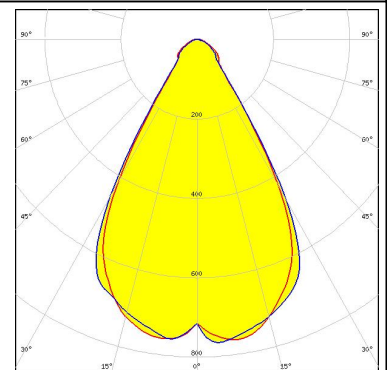
PHOTOMETRIC DATA (SIMULATED):



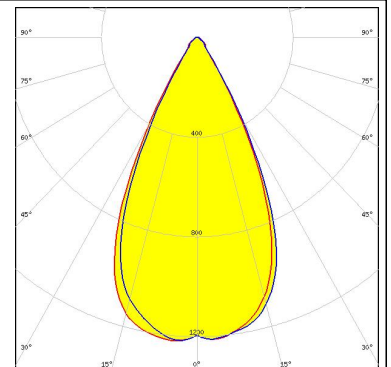
LED LUXEON 5050
FWHM 58.0°
Efficiency 90 %
Peak intensity 0.910 cd/lm
Required components:



LED Duris S8
FWHM 62.0°
Efficiency 90 %
Peak intensity 0.780 cd/lm
Required components:



LED SEOUL 3528
FWHM 52.0°
Efficiency 92 %
Peak intensity 1.200 cd/lm
Required components:



GENERAL INFORMATION:

NOTE: The typical beam angle will be changed by different color, chip size and chip position tolerance. The typical total beam angle is the full angle measured where the luminous intensity is half of the peak value.

MATERIALS:

As part of our continuous research and improvement processes, and to ensure the best possible quality and availability of our products, LEDiL reserves the right to change material grades without notice.

PRODUCT DATA USER AGREEMENT AND DISCLAIMER:

The measured data in the provided downloadable LEDiL Product Datasheets and Mechanical 2D-Drawings is rounded and provided as reference for planning. LEDiL Oy's optical specifications have been verified by conducting performance testing of the products in accordance with the company's quality system. The reported data are averaged results of multiple measurements with typical variation. LEDiL Oy reserves the right to without prior notification make changes and improvements to its products.

LEDiL Oy assumes neither warranty, nor guarantee nor any other liability of any kind for the contents and correctness of the provided data. The provided data has been generated with highest diligence but the provided data may in reality not represent the complete possible variation range of all intrinsic parameters. Therefore, in certain cases a deviation from the provided data could occur.

LEDiL Oy reserves the right to undertake technical changes of its products without further notification which could lead to changes in the provided data. LEDiL Oy assumes no liability of any kind for the possible deviation from any provided data or any other damage resulting from the usage of the provided data.

The user agrees to this disclaimer and user agreement with the download or usage of the provided files.

LEDiL Oy

Joensuunkatu 13
FI-24240 SALO
Finland

LEDiL Inc.

228 West Page Street
Suite D
Sycamore IL 60178
USA

Local sales and technical support

[www.ledil.com/
where_to_buy](http://www.ledil.com/where_to_buy)

Shipping locations

Salo, Finland
Hong Kong, China

Distribution Partners

[www.ledil.com/
where_to_buy](http://www.ledil.com/where_to_buy)