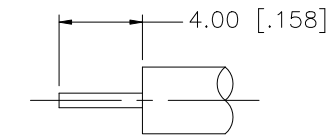
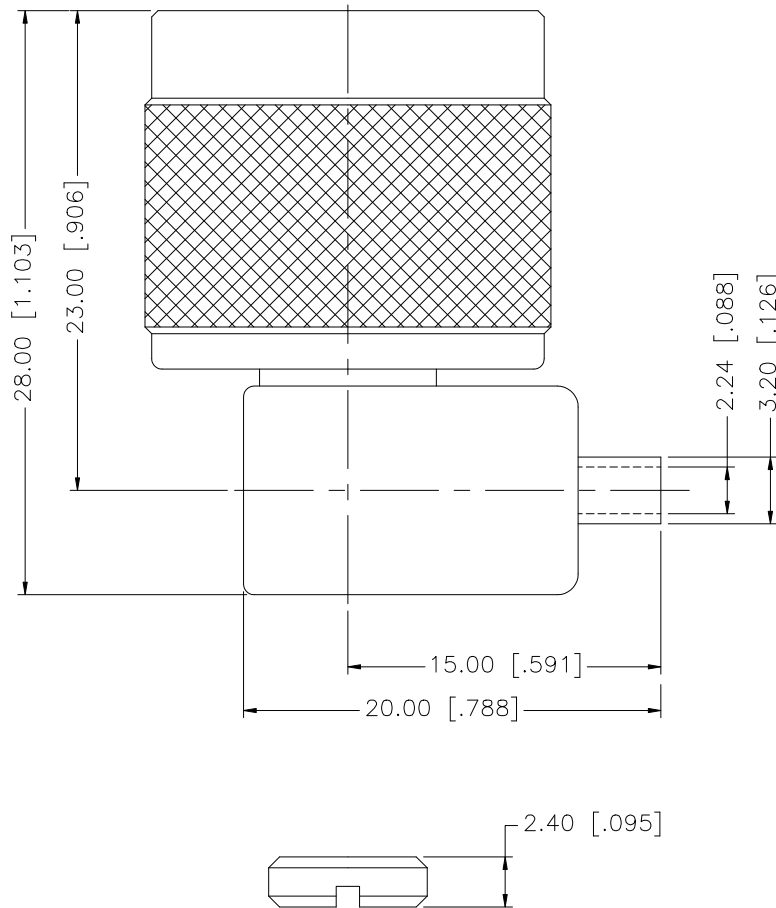


REV.	DATE	DESCRIPTION
NC	03/23/99	INITIAL RELEASE
A	05/22/07	UPDATE DRAWING FORMAT
B	09/20/07	REVISE BODY PLATING TO NEXCOTE



RECOMMENDED  
CABLE STRIPPING DIM'S

				UNLESS OTHERWISE SPECIFIED DIMENSIONS ARE IN MILLIMETERS, DIMENSIONS IN [ ] ARE IN INCHES AND FOR CUSTOMER REFERENCE ONLY.	APPROVALS	DATE	<b>Amphenol Connex</b>					
8					DRAWN	G.R.S.				09/20/07	PART DESCRIPTION N R/A DIRECT SOLDER PLUG (FOR .085", .086" SEMI RIGID CABLE)	
7					CHECKED			PART NO. 172235				
6					ISSUED						DWG. NO. 172235.DWG	
5					SHEET	1 OF 1		REV. B				
4	BARREL	BRASS	GOLD	1	CAD FILE C:/172/172235.DWG						SIZE A	
3	CONTACT PIN	BRASS	GOLD	1	DO NOT SCALE DRAWING			SCALE NA				
2	INSULATOR	TEFLON	NATURAL	1								
1	BODY	BRASS	NEXCOTE	1								
DESCRIPTION				MATERIAL	FINISH	QTY						