

PART NUMBER	REV	TERMINATOR	FEED TYPE	DESCRIPTION
1530548-1	B	LEADMAKER	MECH POST FEED	CUTS CARRIER
1530548-2	B	BENCH	MECH PRE FEED	CUTS CARRIER
1530548-6	B	LEADMAKER	MECH POST FEED	CONTINUOUS CARRIER
7-1530548-1	B	LEADMAKER	MECH POST FEED	-1 AND SPARE PARTS
7-1530548-2	B	BENCH	MECH PRE FEED	-2 AND SPARE PARTS
7-1530548-6	B	LEADMAKER	MECH POST FEED	-6 AND SPARE PARTS
7-1530548-7	A	-	-	SPARE PARTS KIT

CRIMP DATA    TE TERMINAL    TE CRIMP SPECS

TERMINAL NAME: POSITIVE LOCK RECEPTACLE, MKII

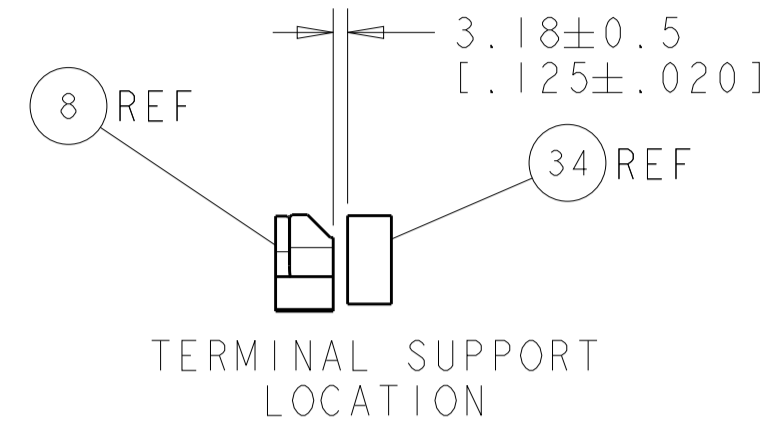
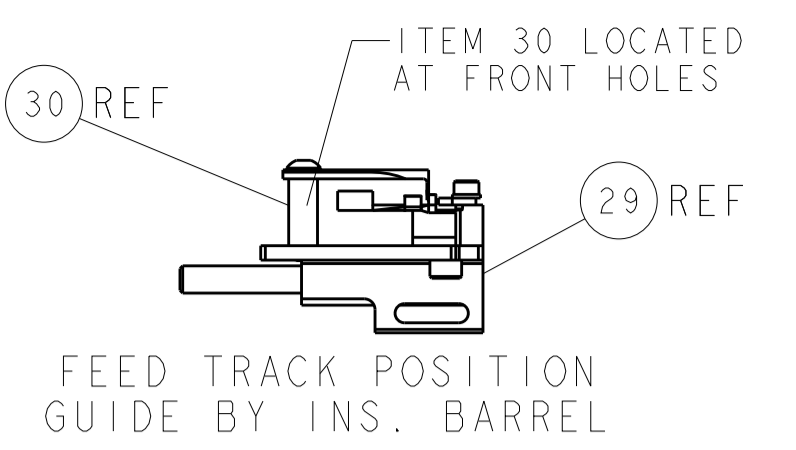
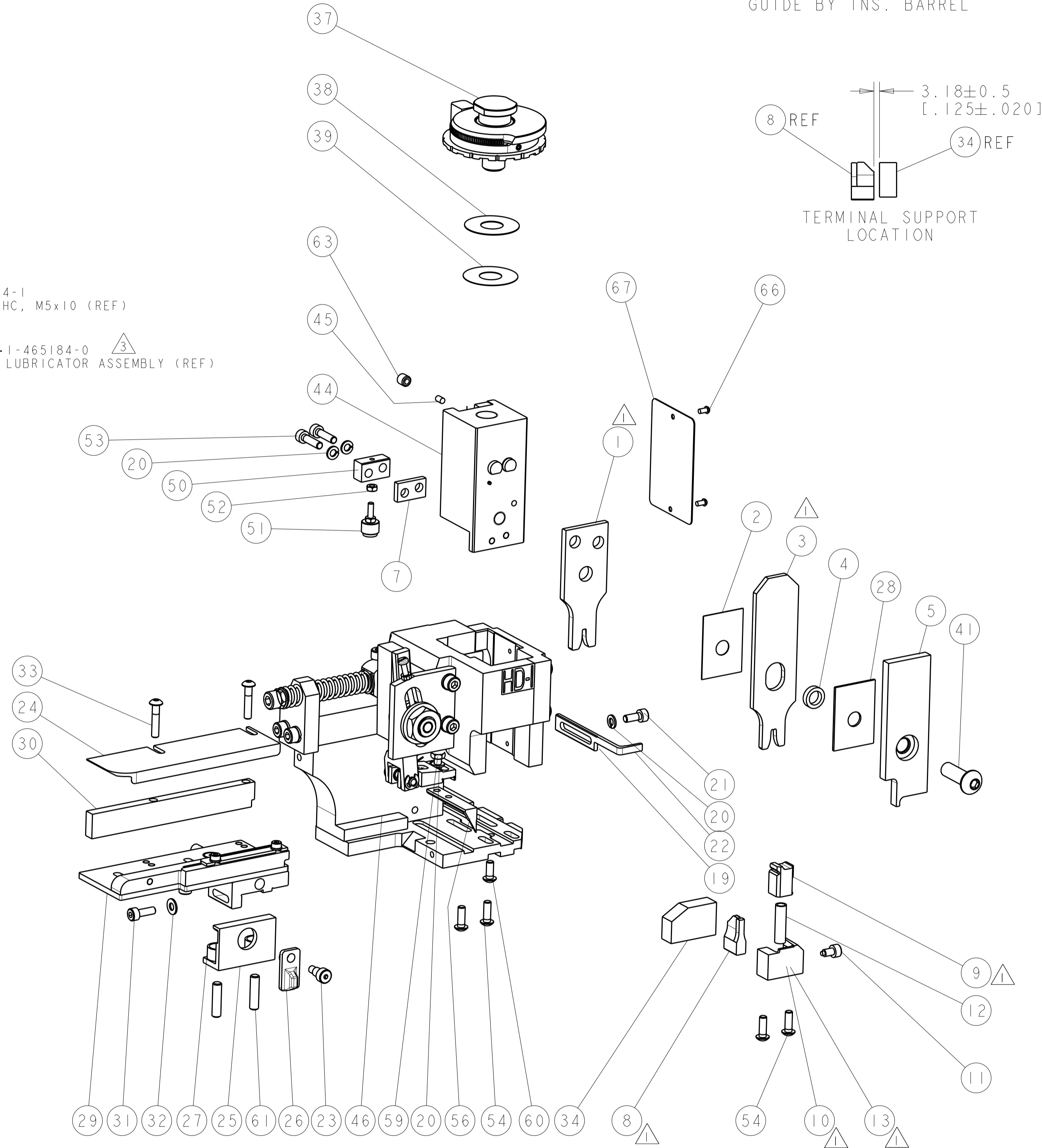
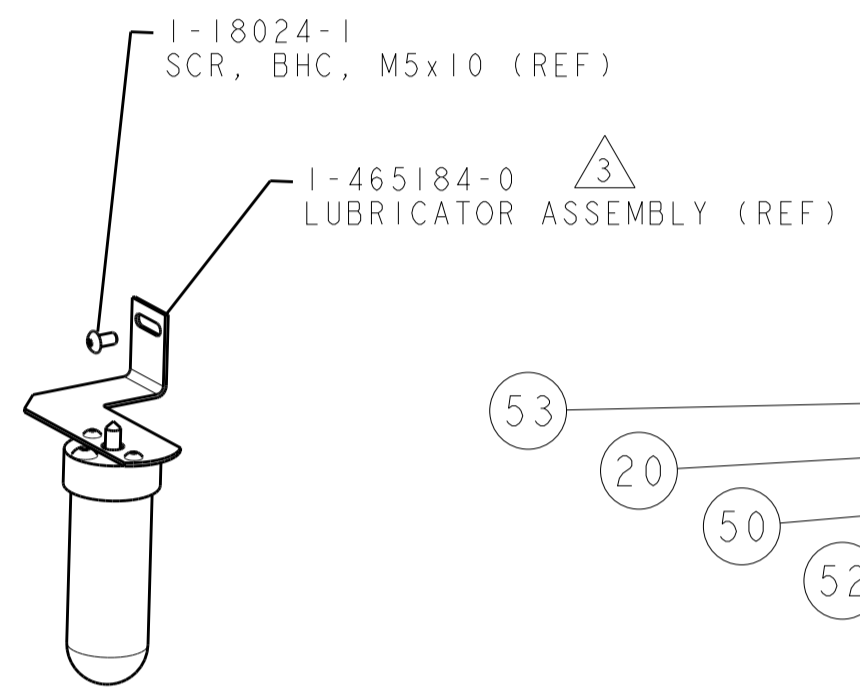
CRIMP	SIZE	TYPE	RANGE
WIRE	2.29 [.090 IN]	F	0.50mm-1.50mm
INSUL	3.56 [.140 IN]	F	Ø 2.10 - 2.90 [.083-.114 IN]

WIRE STRIP LENGTH: 4.43-4.81 [.174-.189 IN]    APPL INSTRUCTIONS: 408-8322 & 408-8490

TERMINAL APPL SPEC: 114-3118    FEED: 19.05 [.750 IN]

TERMINALS APPLIED

WIRE SIZE	CRIMP HEIGHT	REF SETTING
1.50mm <sup>2</sup>	1.65 ± 0.05 [.065 ± .002 IN]	A9
1.00mm <sup>2</sup>	1.47 ± 0.05 [.058 ± .002 IN]	C3
0.75mm <sup>2</sup>	1.35 ± 0.05 [.053 ± .002 IN]	D3
0.50mm <sup>2</sup>	1.27 ± 0.05 [.050 ± .002 IN]	E2

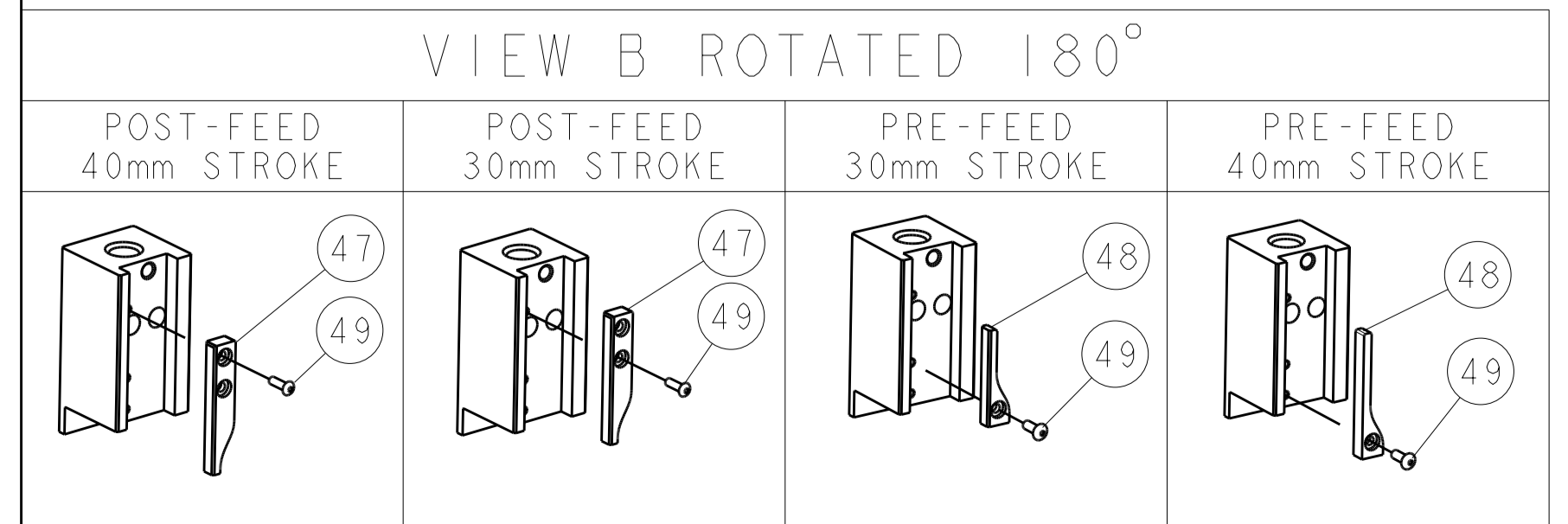


SET UP GAGE 458637-3

REV	DATE	BY	CHKD	DESCRIPTION
A	06OCT2011	RK	GB	RELEASED
B	27JUN2012	MY	GB	ECR-12-011665

-	1	1	1	1	1	1	1	1338705-3	DOCUMENTATION PACKAGE	71
-	1	1	1	1	1	1	1	461264-5	PLATE, IDENTIFICATION	67
-	2	2	2	2	2	2	2	21017-2	SCREW, DRIVE	66
-	1	1	1	1	1	1	1	3-18031-0	SCR, SET, CUP POINT M6 X 6.0	63
-	2	2	2	2	2	2	2	2-18032-5	SCR, SET, FLT POINT M5 X 20.0	61
-	1	1	1	1	1	1	1	18024-7	SCR, BTN SKT HD CAP (M4 X 10.0)	60
-	1	1	1	1	1	1	1	5-18022-2	SCR, HEX HD CAP M4 X 8.0	59
-	1	1	1	1	1	1	1	1338685-1	PAWL, FEED	56
-	4	4	4	4	4	4	4	18024-8	SCR, BTN SKT HD CAP (M4 X 12.0)	54
-	2	2	2	2	2	2	2	1-18023-3	SCR, SKT HD CAP M4 X 16.0	53
-	1	1	1	1	1	1	1	18030-1	NUT, HEX, REG M3	52
-	1	1	1	1	1	1	1	811242-6	BUMPER, HOLD DOWN	51
-	1	1	1	1	1	1	1	690753-2	SPACER, TONKER	50
-	1	1	1	1	1	1	1	18024-3	SCR, BTN SKT HD CAP (M3 X 10.0)	49
-	-	1	-	-	1	-	-	1338675-1	CAM, UNIVERSAL PRE FEED	48
-	1	-	1	-	-	1	-	1338676-1	CAM, UNIVERSAL POST-FEED	47
-	1	1	1	1	1	1	1	1320999-3	APPLICATOR SUBASSEMBLY, HDI	46
-	1	1	1	1	1	1	1	690191-1	PLUG, NYLON	45
-	1	1	1	1	1	1	1	1633724-1	RAM, (SIDE FEED)	44
-	1	1	1	1	1	1	1	2-18024-6	SCR, BTN SKT HD CAP (M8 X 25.0)	41
-	1	1	1	1	1	1	1	690125-1	SHIM SUB-ASSY	39
-	1	1	1	1	1	1	1	1-469367-0	SHIM	38
-	1	1	1	1	1	1	1	879103-2	FINE ADJUST HEAD ASSEMBLY	37
-	1	1	1	1	1	1	1	1752356-1	SUPPORT, TERMINAL	34
-	2	2	2	2	2	2	2	1-18024-0	SCR, BTN SKT HD CAP (M4 X 20.0)	33
-	1	1	1	1	1	1	1	18027-2	WASHER, FLAT, REG M4	32
-	1	1	1	1	1	1	1	1-18023-2	SCR, SKT HD CAP M4 X 12.0	31
-	1	1	1	1	1	1	1	1-1320908-0	SPACER, STRIP GUIDE	30
-	1	1	1	1	1	1	1	1633073-1	STRIP GUIDE ASSEMBLY	29
-	1	1	1	1	1	1	1	1-455888-0	SPACER, CRIMPER	28
-	2	2	2	2	2	2	2	1-22284-0	SPRING, COMPRESSION	27
-	1	1	1	1	1	1	1	356835-1	LEVER, DRAG RELEASE	26
-	1	1	1	1	1	1	1	240792-1	DRAG, TERMINAL	25
-	1	1	1	1	1	1	1	1320928-2	STRIP GUIDE	24
-	1	1	1	1	1	1	1	980371-4	SCR, SKT HD SHLDR 5.0 DIA X 6.0	23
-	1	-	1	-	-	1	-	690472-2	STRIPPER	22
-	1	1	1	1	1	1	1	1-18023-1	SCR, SKT HD CAP M4 X 10.0	21
-	4	4	4	4	4	4	4	18025-2	WASHER, SPRG LOCK, REG M4	20
-	-	1	-	-	1	-	-	690472-1	STRIPPER	19
-	1	-	-	1	-	-	-	1338684-2	SHEAR HOLDER, FRONT	13
-	1	1	1	1	1	1	1	3-22280-3	SPRING, COMPRESSION	12
-	1	1	1	1	1	1	1	356885-5	STOP, SHEAR	11
-	-	1	1	-	1	1	1	1-1320921-0	SHEAR HOLDER, FRONT, CUT	10
-	1	1	1	1	1	1	1	462006-6	FLOATING SHEAR, FRONT	9
-	1	2	2	2	1	1	1	4-1633620-5	ANVIL, COMBINATION	8
-	1	1	1	1	1	1	1	240641-8	SPACER	7
-	-	-	-	-	-	-	-	-	-	6
-	1	1	1	1	1	1	1	2-455889-0	DEPRESSOR, SHEAR	5
-	1	1	1	1	1	1	1	238011-2	BLOCK, CRIMPER SPACER	4
-	1	2	2	2	1	1	1	1-456134-4	CRIMPER, INSULATION F PREMIUM	3
-	1	1	1	1	1	1	1	455888-3	SPACER, CRIMPER	2
-	1	2	2	2	1	1	1	1-456406-6	CRIMPER, WIRE PREMIUM	1

- △ RECOMMENDED SPARE PARTS.
- 2. GREASE RAM, CAM, CAM FOLLOWER AND FEED ROD LIGHTLY.
- △ CERTAIN TERMINALS REQUIRE LUBRICATION. REFER TO THE APPLICATOR INSTRUCTION SHEET FOR MORE INFORMATION.
- 4. LUBRICATE DAILY PER THE APPLICATOR INSTRUCTION SHEET SUPPLIED WITH THE APPLICATOR.



\* WARNING  
ON INSTALLATION, SET WIRE DISC TO LARGEST WIRE SIZE SETTING. USE OF SETTINGS BELOW MIN. REQUIRED CRIMP HEIGHT SETTING WILL CAUSE DAMAGE TO CRIMP TOOLING.

DIMENSIONS	TOLERANCES UNLESS OTHERWISE SPECIFIED:	APVD	NAME
mm [IN]	0 PLC ± 1 PLC ± 3 PLC ± 4 PLC ± ANGLES ±	BOB HIGMAN 16AUG2011 G. BAILEY 16AUG2011 I. CRUZ 16AUG2011	STE TE Connectivity Harrisburg, PA 17105-3608
MATERIAL	FINISH	WEIGHT	RESTRICTED TO
		Customer Accessible Production Drawing	SCALE 3:5 SHEET 1 of 1 REV B