

1

2

3

4

5

6

7

A

A

B

B

C

C

D

D

E

E

F

F

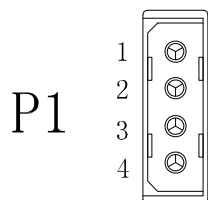
G

G

H

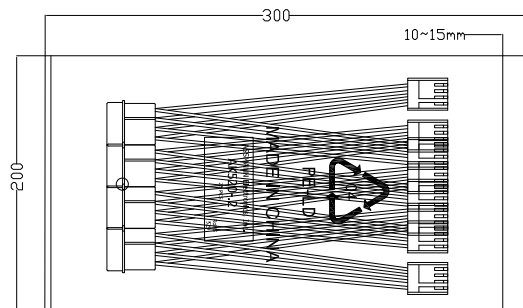
H

200 ± 10



PIN ASSIGNMENT:

P2	P1	P3
1 — YELLOW —	1 — YELLOW —	1
2 — BLACK —	2 — BLACK —	2
3 — BLACK —	3 — BLACK —	3
4 — RED —	4 — RED —	4



25PCS/PE BAG

Material:

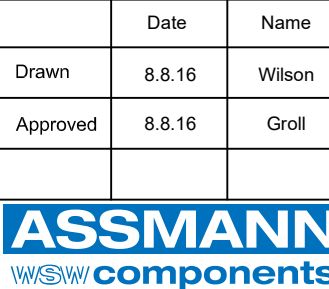
- Cable: (Red, Black, Yellow) UL1007 22AWG(TC) Ø1.55mm L=185+1/-0mm
- Housing: Big 4pin House Female PH5.08mm, Insulator White
- Terminal: Big 4pin Male Terminal PH=5.08mm
- Material: Brass Tin plated 18AWG
- Housing: A2508H Housing 2.5mm, Insulator White
- Terminal: A2508H Terminal 2.5mm
- Material: Brass Tin plated
- PE Bag: CLEAR PE BAG, 200*300*0.05mm

Unit: mm



Scale	Free
TOLERANCE	
X.	±0.3
X.X	±X
X.XX	±X
DIM	TOL
X.°	±X°
X.X°	±X°
Angle	TOL

Id.	Modification	Date	Name



1840 W. Drake Drive, Suite 101 • Tempe, AZ 85283
Toll Free: 1-877-277-6266 • Email: info@assmann.us

Date

Name

Title

Internal Power cord
22AWG

Drawn

8.8.16

Wilson

Approved

8.8.16

Groll

ASSMANN WSWW-No.

AK520-.2

Drawing-No.

rev00

Replace

Sheet

1/1

1

2

3

4

5

6

7