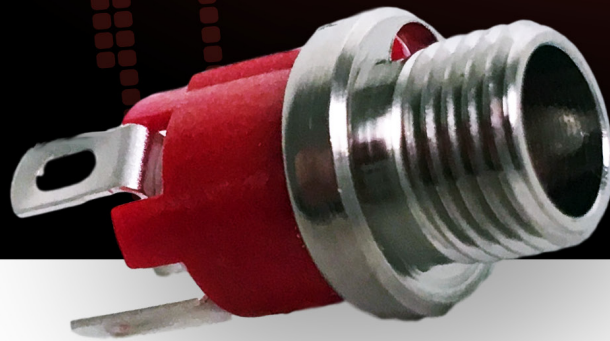
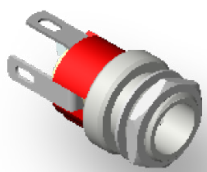


2.1MM CENTER PIN
DC POWER
JACKS



Switchcraft[®]
CONXALL[®]

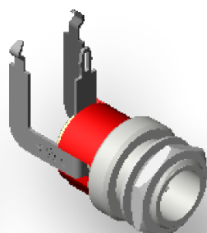
HARSH ENVIRONMENT CONNECTIVITY SOLUTIONS



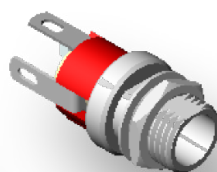
721A



PC721A



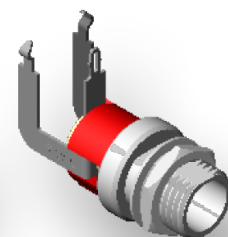
721RA



L721A



PCL721



L721RA

NEW 721A SERIES!

SWITCHCRAFT QUALITY JACKS: NOW WITH A 2.1MM OPTION!

Switchcraft's DC Power Jacks are the most trusted brand because of their unbeatable Made-In-USA quality. For expanded compatibility, they are now available with a 2.1mm center pin: the ideal mate for 2.1mm-style DC power plugs!

ELECTRICAL:

Voltage Rating:	30V DC resistive
Current Rating:	5A (current carry only)
Insulation Resistance:	1,000 MΩ min.
Contact Resistance:	0.01Ω max. (initial) 0.02Ω max. (after humidity/ durability) 0.10Ω max. (after salt spray)
Dielectric Withstanding:	500 VAC max.

MATERIAL

Bushing:	Copper Alloy, nickel plated
Terminals:	Copper Alloy, silver plated
Hardware:	P2439 nickel plated copper alloy hex nut P2441 nickel plated steel flat washer
Electrical Insulators:	Thermoplastic, Phenolic
Contacts:	Copper Alloy, silver plated

MECHANICAL/ ENVIRONMENTAL:

Life:	5,000 insertion/withdrawal cycles min
Operating Forces:	3 pound maximum insertion 4 ounce minimum withdrawal
Temperature Limits:	-40°C to 65°C (-40°F to 149°F)

PART NUMBER	PIN DIAMETER	BUSHING LENGTH	CONTACT TYPE	COMPATIBLE MATING PLUGS
721A	2.1mm	5.5mm	Solder	762, 763, 762K, or 763K
PC721A	2.1mm	5.5mm	Straight PC	762, 763, 762K, or 763K
721RA	2.1mm	5.5mm	Right Angle PC	762, 763, 762K, or 763K
L721A	2.1mm	8.1mm	Solder	767K, 768K
PCL721A	2.1mm	8.1mm	Straight PC	767K, 768K
L721RA	2.1mm	8.1mm	Right Angle PC	767K, 768K