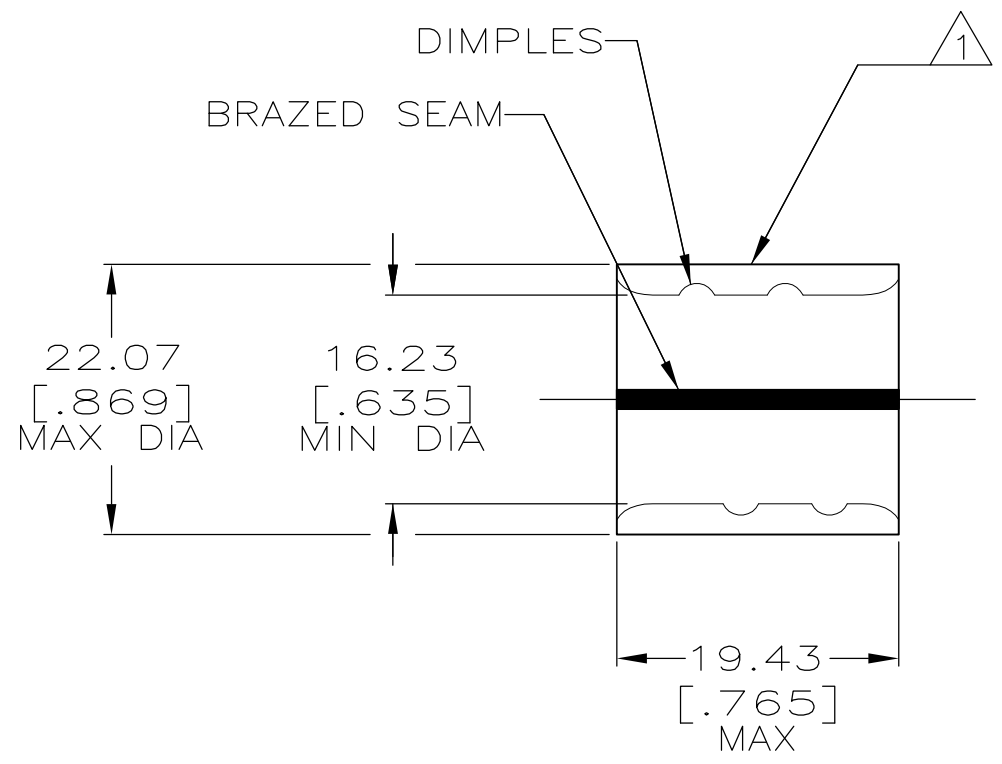


THIS DRAWING IS UNPUBLISHED. RELEASED FOR PUBLICATION
 © COPYRIGHT - By - ALL RIGHTS RESERVED.

LOC	DIST	REVISIONS					
		P	LTR	DESCRIPTION	DATE	DWN	APVD
G	14		F2	REVISED PER ECO-12-001377	23JAN12	KH	DR

AMP WIRE RANGE	Listed FILE E13288	LR7189 Certified
4/0 AWG SOLID OR STRANDED	4/0 AWG SOLID OR STRANDED	4/0 AWG SOLID OR STRANDED



- 1 STAMP AMP 4/0W* 200 LOCATE APPROX AS SHOWN
- 2 MATERIAL THK: 2.59^{±0.08} [.102^{±.003}]
- 3 TIN PL 0.00254 [.000100] MIN THK PER ASTM B545.
- 4 CLEANED, UNPLATED
- 5 P/N 1-36948-1 IS NOT UL OR CSA LISTED.
- 6 STAMP FOR MANUFACTURING LOCATION OR CODE PERMISSIBLE.
- 7 PREPRODUCTION - FASR REQ
- 8 NOT UL OR CSA LISTED
- 9 0.00254 [.000100] MIN TIN-LEAD (60-40) PLATE PER SAE-AMS-P-81728
- 10 PRELIMINARY - NOT FOR PRODUCTION

FINISH	QTY	PACKAGING TYPE	PART NO.
9	-	LOOSE PIECE	8 10 36951-2
4	-	LOOSE PIECE	5 7 1-36951-1
3	-	LOOSE PIECE	36951

AMP INCORPORATED CUSTOMER SERVICE SYSTEMS		MAX RECOMMENDED OPERATING TEMPERATURE: 170°C	THIS DRAWING IS A CONTROLLED DOCUMENT.		DWN DK SCHRUM 5/24/93	TE Connectivity			
FOR ADDITIONAL PRODUCT INFORMATION OR COPIES OF DRAWINGS AND TECHNICAL DOCUMENTS	PRODUCT INFORMATION CENTER 1-800-522-6752	VOLTAGE RATING: N/A	DIMENSIONS: mm [INCHES]	TOLERANCES UNLESS OTHERWISE SPECIFIED:	CHK RD HEIM 1/27/94				
FOR APPLICATION TOOLING INFORMATION	TOOLING ASSISTANCE CENTER 1-800-722-1111	CIRCULAR MIL AREA: 96.3-117.0mm ² [190,000-231,100] SOLID OR STRANDED		0 PLC ± - 1 PLC ± - 2 PLC ± 0.20[.008] 3 PLC ± - 4 PLC ± - ANGLES ± -	APVD JL MECKLEY 1/27/94	APPLICATION SPEC			
FOR ORDER ENTRY	1-800-526-5142		MATERIAL COPPER PER ASTM B-152	FINISH SEE TABLE	PRODUCT SPEC	SIZE A3	CAGE CODE 00779	DRAWING NO C-36951	RESTRICTED TO
					WEIGHT -	SCALE 2:1		SHEET 1 OF 1	REV F2