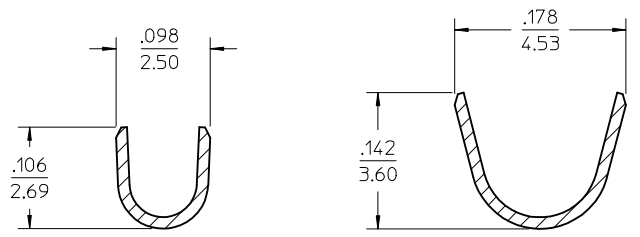


CARRIER STRIP PROGRESSION
SCALE 2:1

- NOTES:
1. MATERIAL: BRASS
 2. FINISH: 20 MICRINCH / (0.5 MICROMETER) MIN. HOT TIN DIP OVERALL.
 3. PRODUCT SPECIFICATION: PS-44441-001
 4. PACKAGING: TERMINALS WOUND ON 24" REELS WITH PAPER INTERLEAF.
QTY: 4000/REEL
 5. THIS TERMINAL INTENDED FOR 18-20 AWG STRANDED WIRE; UL STYLE 1007 OR 1015, .112/(2.84) MAX. DIAMETER INSULATION.
 6. TERMINAL MATES TO .125/(3.18) WIDE x .020/(0.51) THICK FLAT BLADE TERMINALS. MATING CRIMP TERMINAL: 43178 SERIES.
- △: TERMINAL HAS TPA (TOTAL POSITIONING ASSURANCE) OPTIONAL ACTIVATION FEATURE, THAT WHEN ACTIVATED AND USED WITH MOLEX "SABRE" SERIES RECEPTACLE HOUSINGS, PROVIDES SECONDARY LOCK SYSTEM WHICH ENSURES AGAINST TERMINAL BACKOUTS.



SECTION Z-Z
CONDUCTOR CRIMP

SECTION Y-Y
INSULATION CRIMP

RELEASE TO PROD. EC NO: UCP2009-1607 DRWN: BWIRKUS 2009/04/20 CHKD: BWIRKUS 2009/04/21 APPR: BWIRKUS 2009/04/22	QUALITY SYMBOLS	GENERAL TOLERANCES (UNLESS SPECIFIED)	DIMENSION STYLE	SCALE	DESIGN UNITS	THIRD ANGLE PROJECTION
	▽=0	mm INCH	IN/MM	10:1	INCH	
	▽=0	4 PLACES ± --- ± ---	DRAWN BY DATE	TITLE		
		3 PLACES ± --- ± .010	CHECKED BY DATE	TERMINAL, FEM, 18-20 AWG .125/(3.18) WIDE, W/TPA FOR UL 1007 OR 1015 WIRE		
	2 PLACES ± 0.25 ± .014	APPROVED BY DATE	APATEL 12-18-2008	MOLEX INCORPORATED		
	1 PLACE ± 0.35 ± ---	MATERIAL NO.	433752001	DOCUMENT NO.	SD-43375-301	SHEET NO. 1 OF 1
	ANGULAR ± 1/2°	DRAFT WHERE APPLICABLE MUST REMAIN WITHIN DIMENSIONS				
		THIS DRAWING CONTAINS INFORMATION THAT IS PROPRIETARY TO MOLEX INCORPORATED AND SHOULD NOT BE USED WITHOUT WRITTEN PERMISSION				